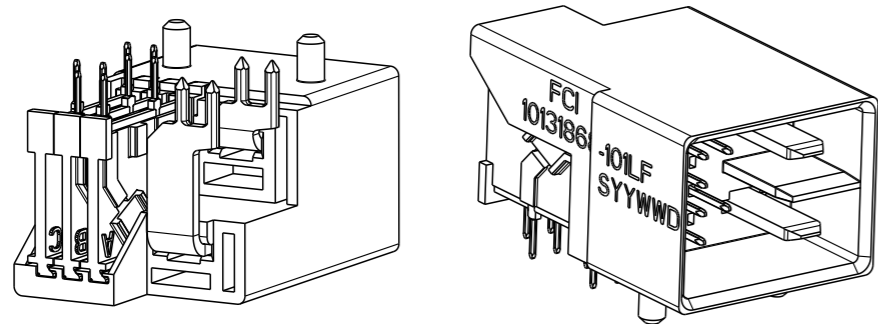
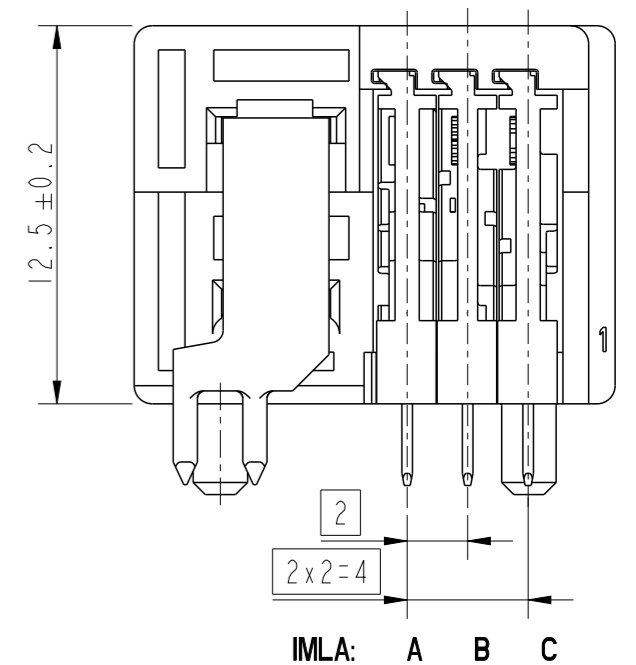
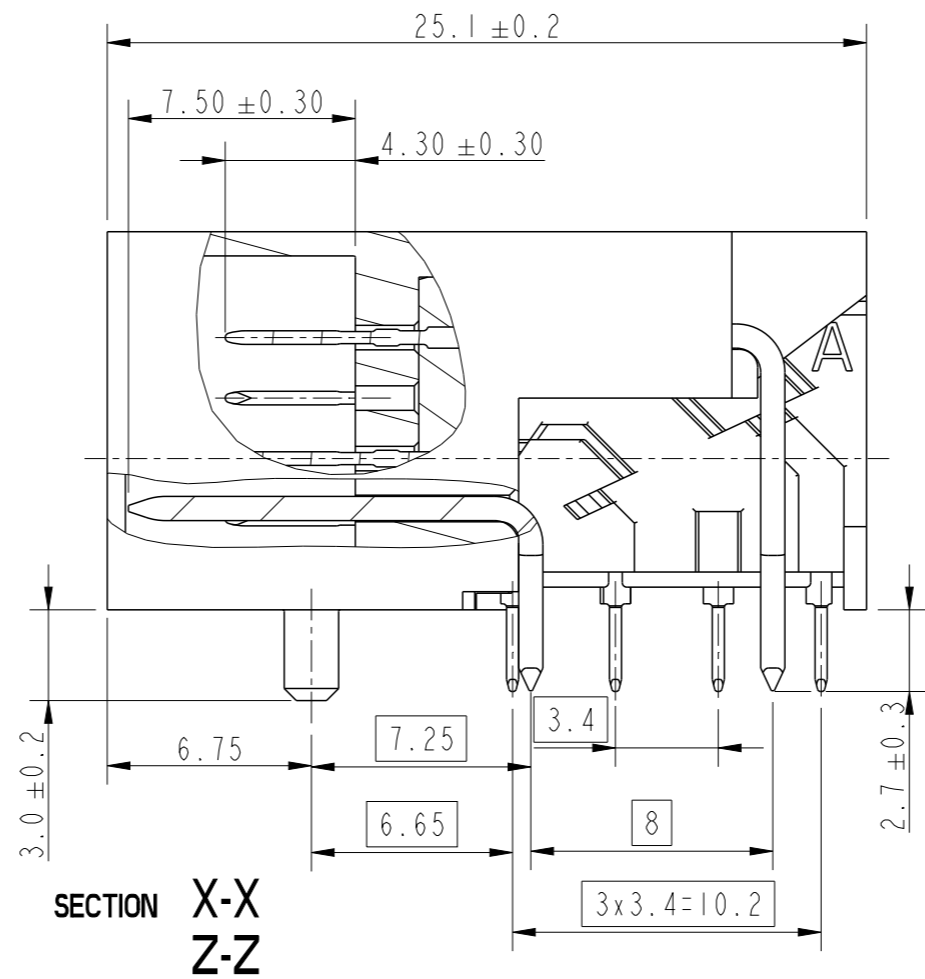
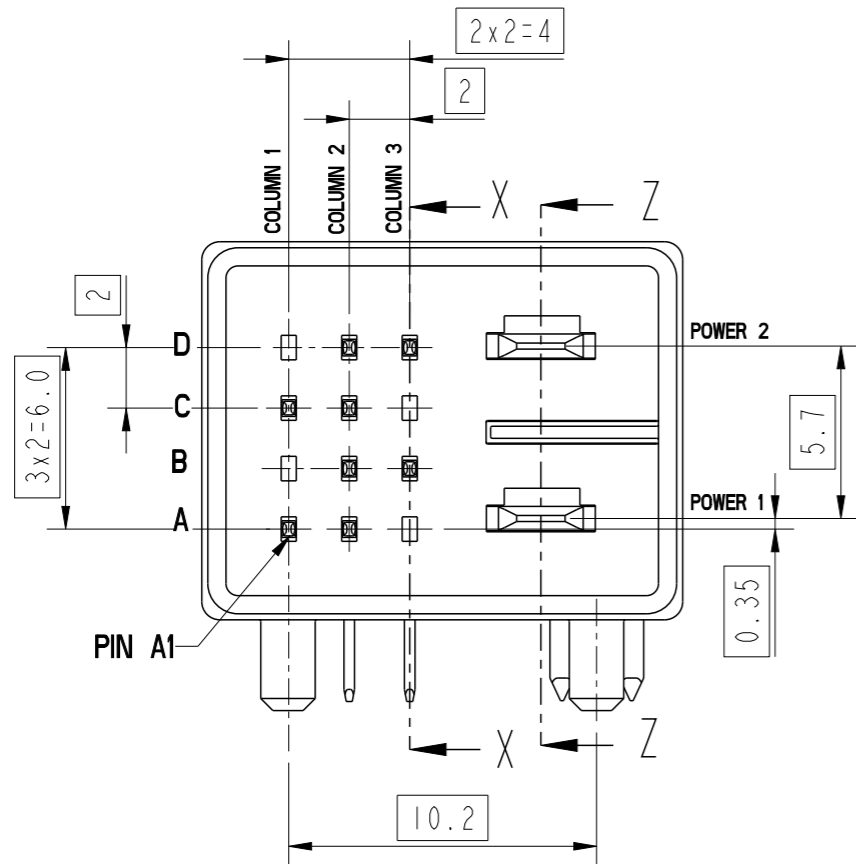
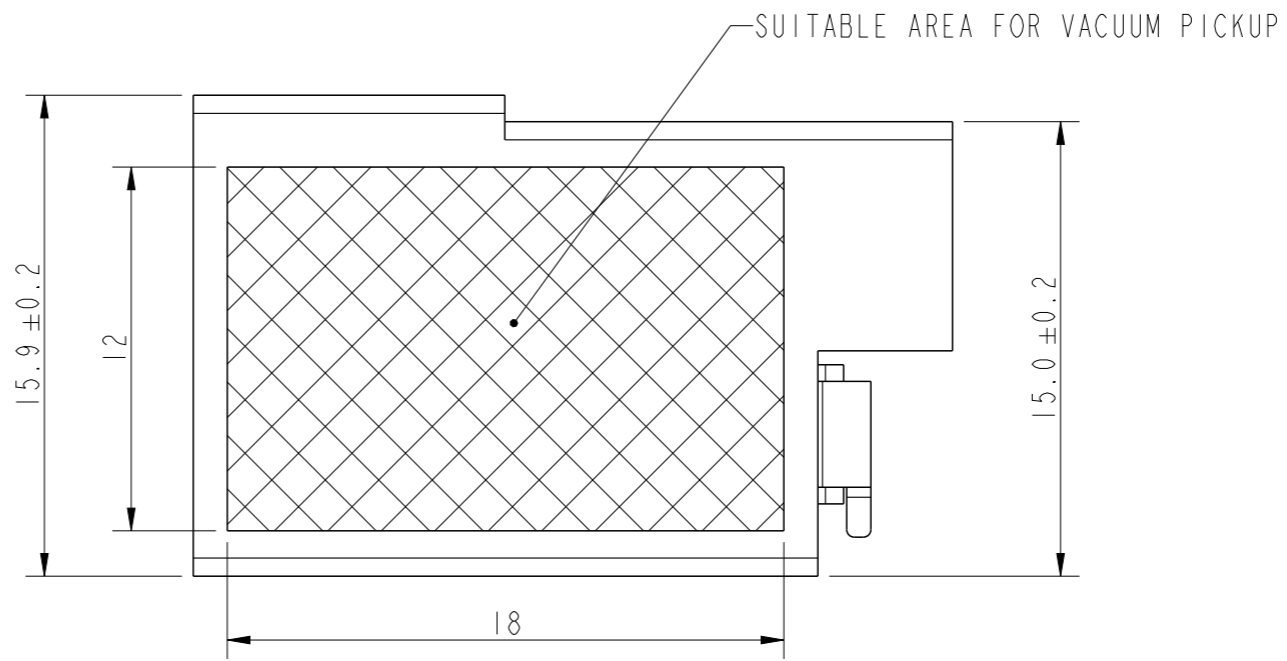


PRODUCT NUMBER
SEE TABLE 1, SHEET 2



spec ref	-	dr	Alosius, Stali	2015/09/23	projection	mm	size	A3	scale	2:1
tolerance std	ISO 406 ISO 1101	eng	Alosius, Stali	2022/05/18			ecn no	ELX-I-44756-1		
TOLERANCES UNLESS OTHERWISE SPECIFIED		chr	-	-			rel level	Released		
surface	linear	appr	Kuriakose, San	2022/05/19	product family	METRAL HDXS		rev		
	angular	Amphenol FCI		title HYBRID SIGNAL&POWER OCTIS RA BOARD CONNECTOR 8 SIG 2 PWR PIP TERMINATION		dwg no 10131868-101		rev G		
ISO 1302	0.X ±0.3 0.XX ±0.10 0.XXX ±0.050	cat. no.		-	Product - Customer Drw		sheet 1 of 7			

1

2

3

4

A

A

TABLE I

AFCI PART NO:	SIGNAL CONTACT LOADING POSITION				POWER
	ROW	COLUMN1	COLUMN2	COLUMN3	
10131868-101LF	D	-	X	X	X 2
	C	X	X	-	
	B	-	X	X	X 1
	A	X	X	-	
10131868-10210SLF	D	X	X	X	X 2
	C	X	X	-	
	B	X	X	X	X 1
	A	X	X	-	
10131868-10312SLF	D	X	X	X	X 2
	C	X	X	X	
	B	X	X	X	X 1
	A	X	X	X	
"X" INDICATES CONTACTS LOADED POSITION					

B

B

C

C

D

D

spec ref	-			dr	Alosius, Stali	2015/09/23	projection	mm	size	A3	scale	2:1
tolerance std	TOLERANCES UNLESS OTHERWISE SPECIFIED			eng	Alosius, Stali	2022/05/18			ecn no		ELX-I-44756-1	
ISO 406				chr	-					rel level		Released
ISO 1101				appr	Kuriakose, San	2022/05/19	product family		METRAL HDXS			
surface	linear	0.X	±0.3	Amphenol FCI	HYBRID SIGNAL&POWER OCTIS RA BOARD CONNECTOR			dwg	10131868-101		rev	G
		0.XX	±0.10		8 SIG 2 PWR PIP TERMINATION							
		0.XXX	±0.050									
ISO 1302	angular	0°	±2°	cat. no.			-	Product - Customer Drw		sheet 2 of 7		

2

3

PDS: Rev :G

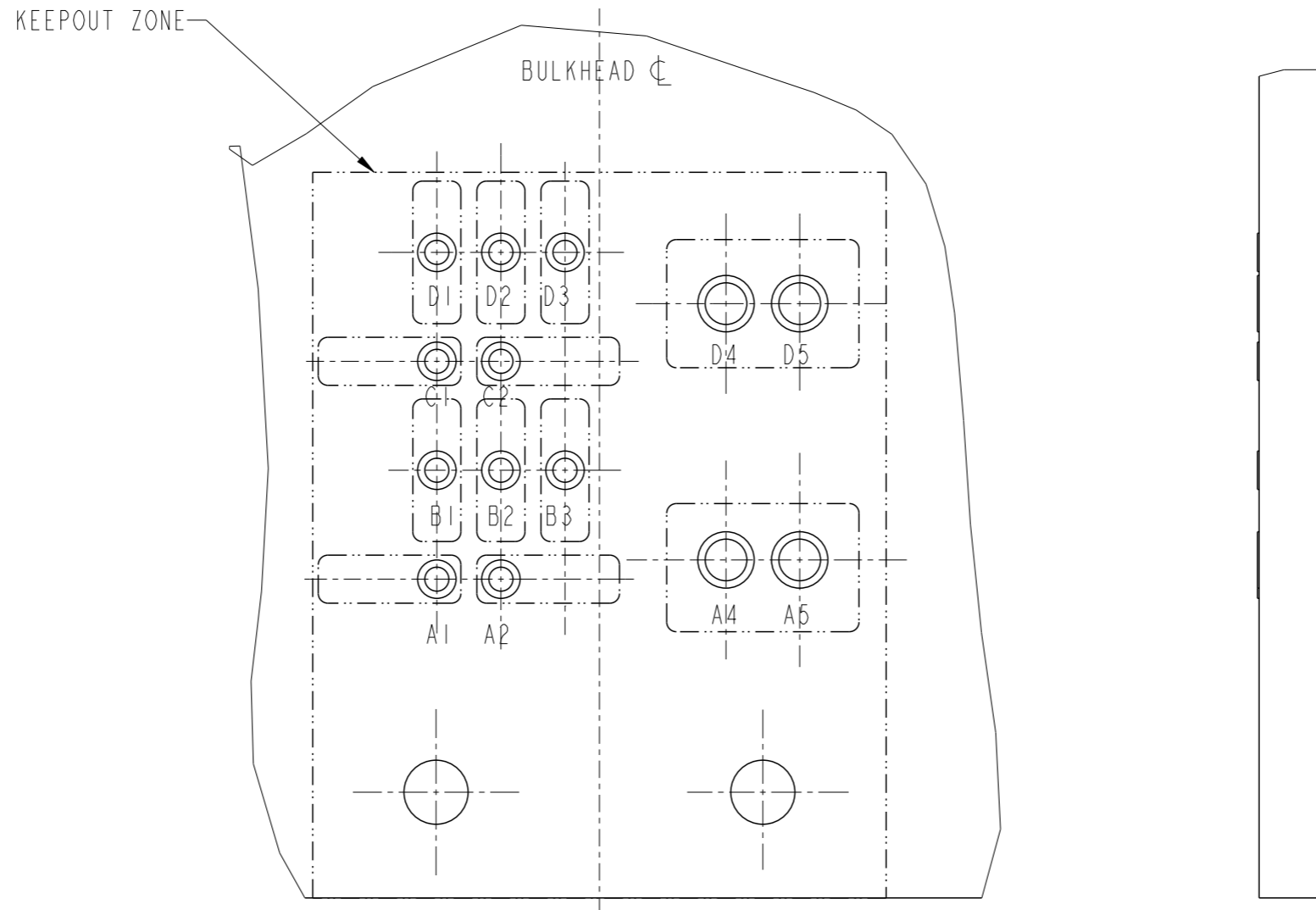
STATUS:Released

Printed: May 24, 2022

Amphenol FCI

© 2020 Amphenol Corporation

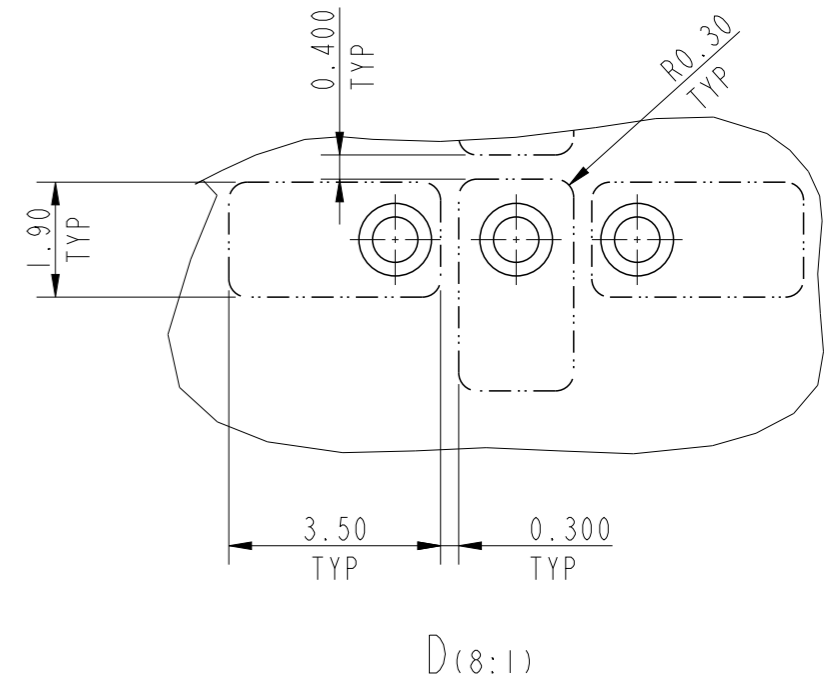
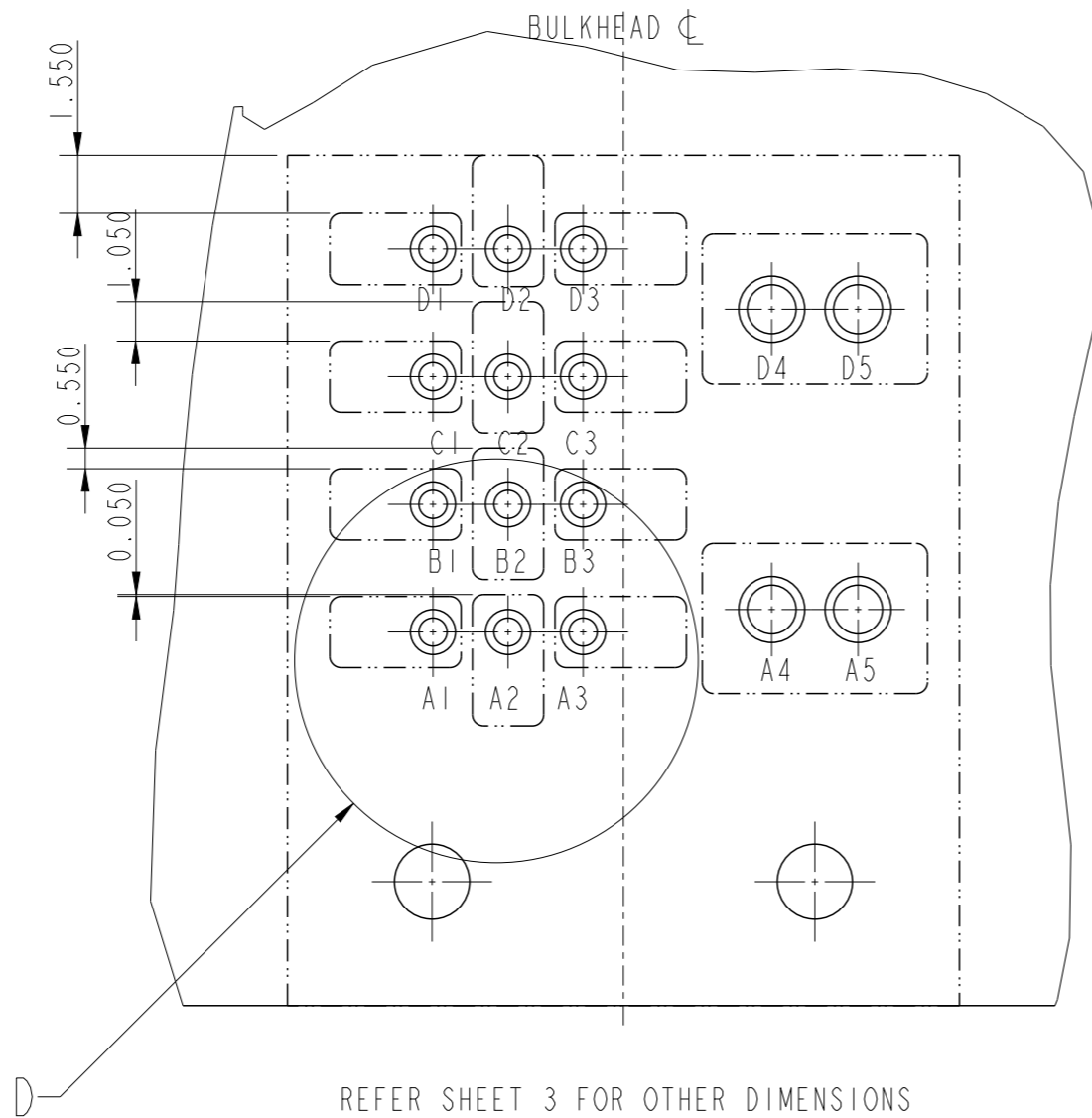
PCB LAYOUT FOR 10131868-10210SLF
(10 SIGNAL 2 POWER)



REFER SHEET 3 FOR DIMENSIONS

spec ref	-			dr	Alosius, Stali	2015/09/23	projection	mm	size	A3	scale	2:1
tolerance std	ISO 406 ISO 1101			eng	Alosius, Stali	2022/05/18			ecn no	ELX-I-44756-1		
TOLERANCES UNLESS OTHERWISE SPECIFIED				chr	-	-	product family	METRAL HDXS	rel level	Released		
surface	linear	0.X	±0.3	Amphenol FCi	HYBRID SIGNAL&POWER OCTIS RA BOARD CONNECTOR			dwg no	10131868-101		rev	G
		0.XX	±0.10		8 SIG 2 PWR PIP TERMINATION							
ISO 1302	angular	0°	±2°		cat. no.	-	Product - Customer Drw	sheet 4 of 7				

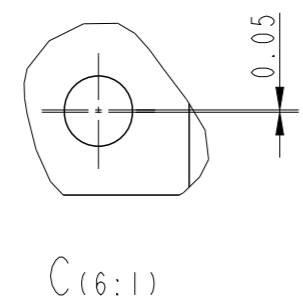
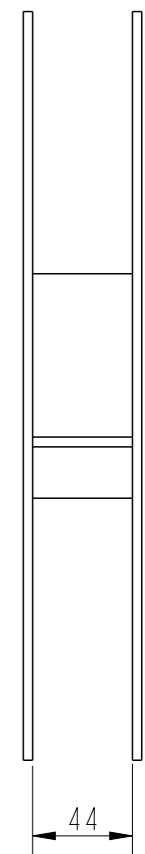
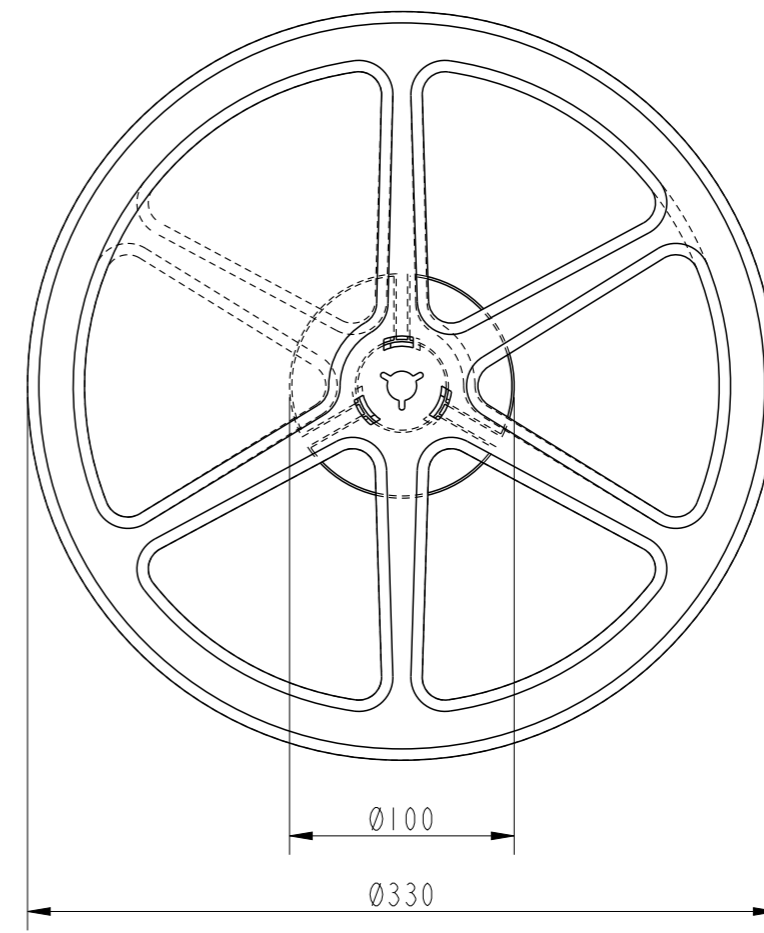
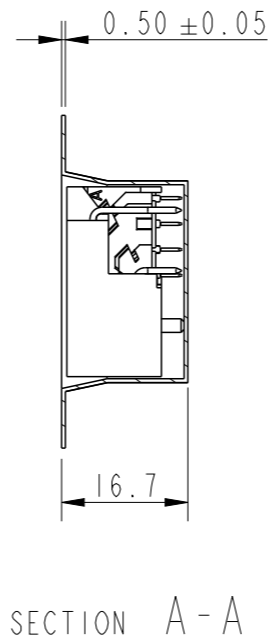
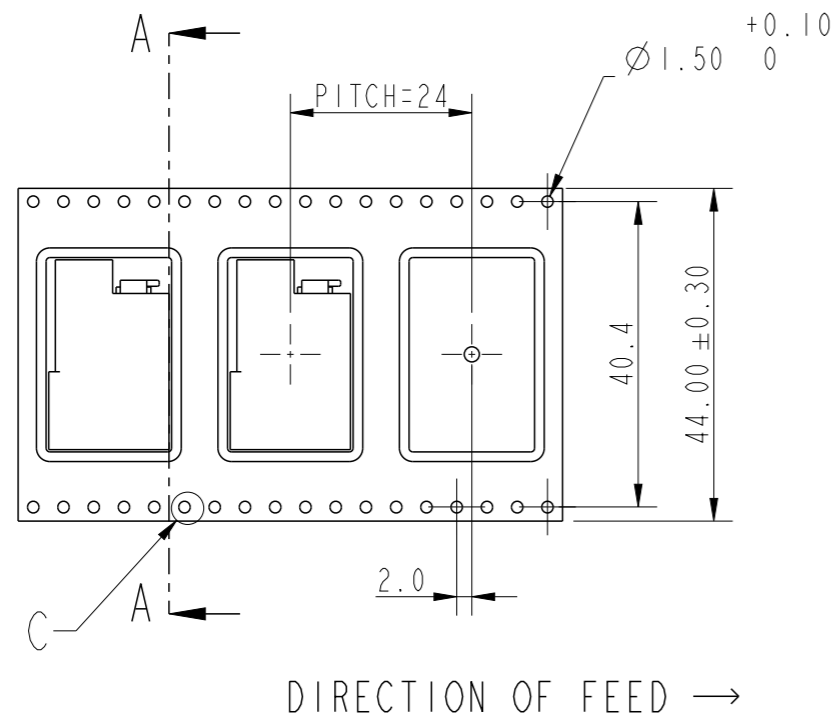
PCB LAYOUT FOR 10131868-10312SLF
(12 SIGNAL 2 POWER)



REFER SHEET 3 FOR OTHER DIMENSIONS

spec ref	-			dr	Alosius, Stali	2015/09/23	projection	mm	size	A3	scale	1:1
tolerance std	TOLERANCES UNLESS OTHERWISE SPECIFIED			eng	Alosius, Stali	2022/05/18		← →	ecn no	ELX-I-44756-1		
ISO 406				chr	-				rel level	Released		
ISO 1101				appr	Kuriakose, San	2022/05/19	product family	METRAL HDXS				
surface	linear	0.X	±0.3	Amphenol FCI	HYBRID SIGNAL&POWER OCTIS RA BOARD CONNECTOR			dwg no	10131868-101			rev
ISO 1302		0.XX	±0.10									
	0.XXX	±0.050										
	angular	0°	±2°	cat. no.	-			Product - Customer Drw	sheet 5 of 7			

PACKAGING SPECIFICATION



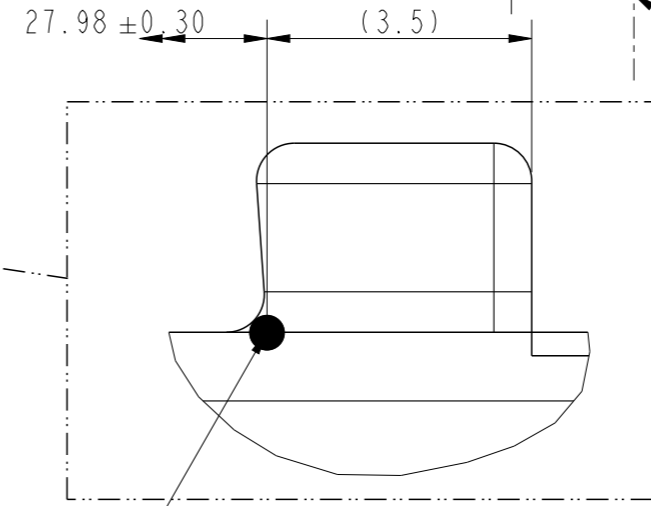
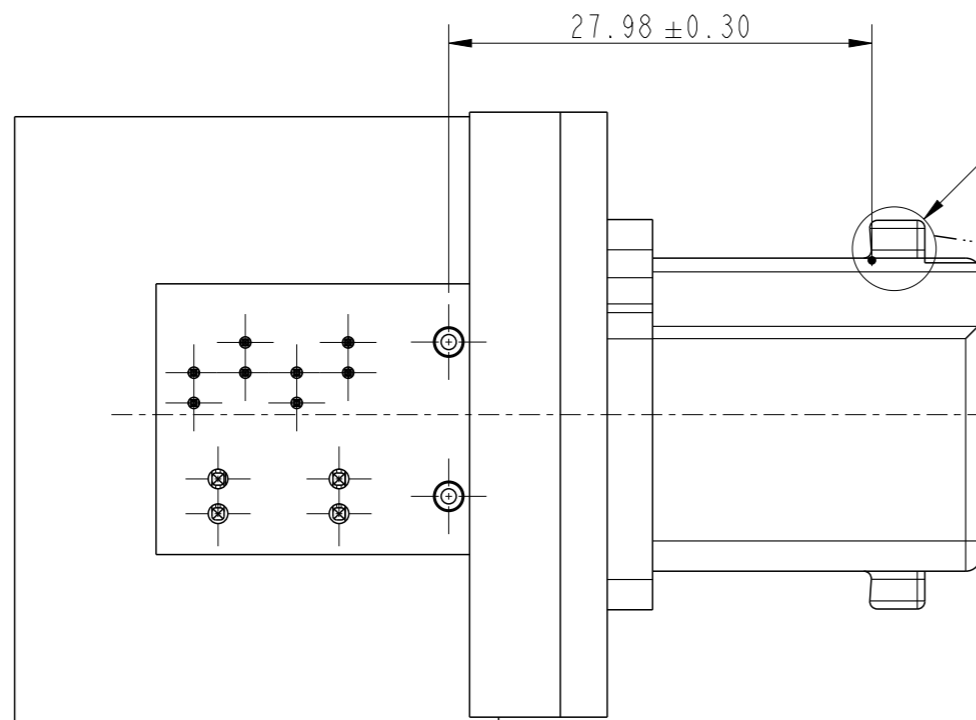
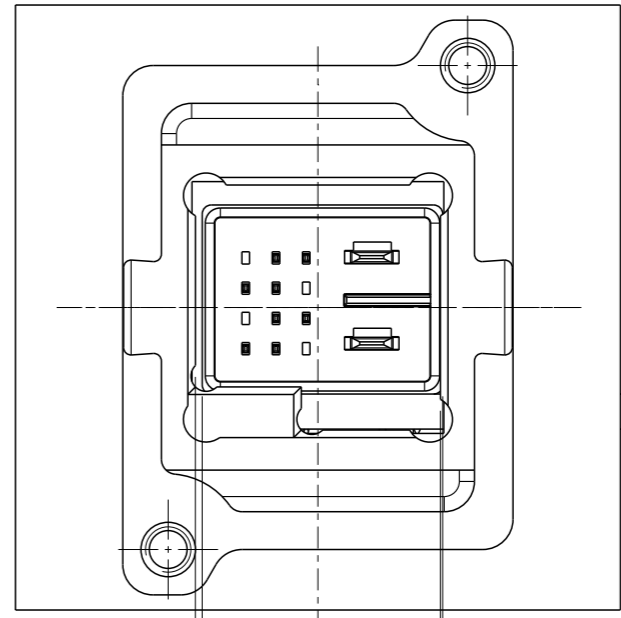
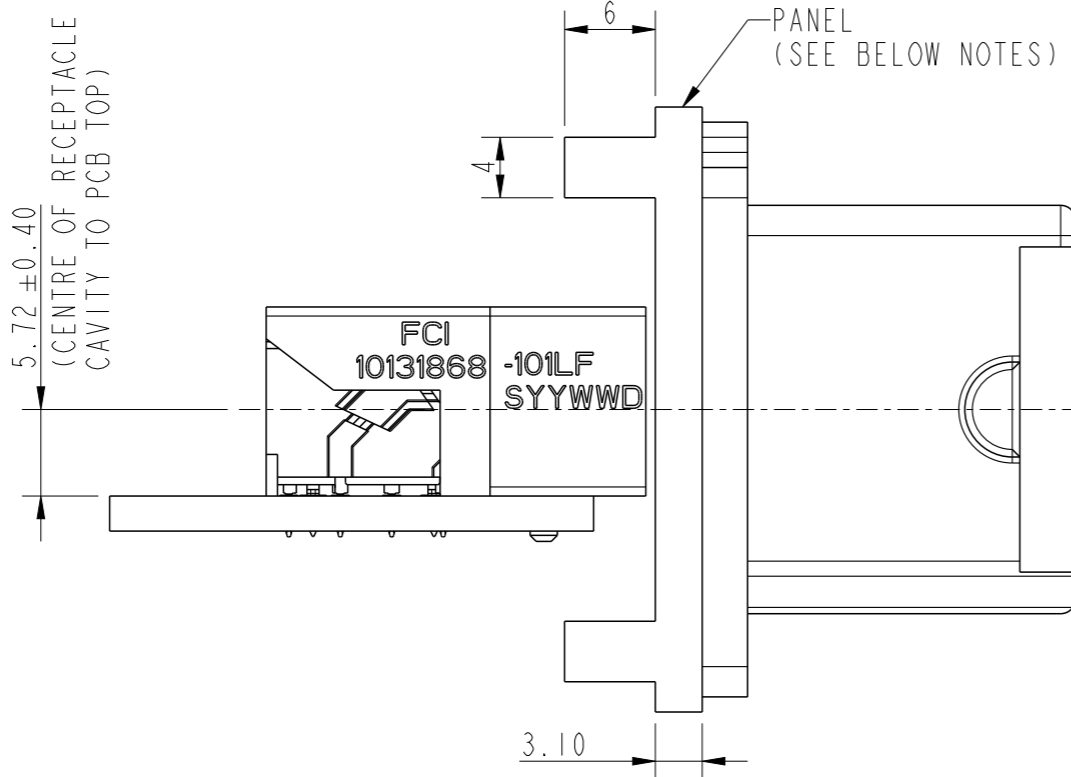
TAPE & REEL PACKING DETAILS

NOTES:

1. CONNECTORS PACKED PER REEL : 150 PIECES
2. PACKAGING DETAILS AS PER EIA-481 STD.
3. PACKING SHOULD BE ANTISTATIC.
4. MATERIAL :
CARRIER TAPE : POLYSTYRENE
COVER TAPE : POLYSTYRENE

spec ref	-	dr	Alosius, Stali	2015/09/23	projection	mm	size	A3	scale	1:1	
tolerance std	ISO 406 ISO 1101	eng	Alosius, Stali	2022/05/18			ecn no	ELX-I-44756-1			
TOLERANCES UNLESS OTHERWISE SPECIFIED		chr	-	-			rel level	Released			
surface	linear	appr	Kuriakose, San	2022/05/19	product family	-	dwg no	10131868-101		rev	G
ISO 1302	angular				HYBRID SIGNAL&POWER OCTIS RA BOARD CONNECTOR 8 SIG 2 PWR PIP TERMINATION		Product - Customer Drw		sheet 6 of 7		

5.72 ±0.40
(CENTRE OF RECEPTACLE
CAVITY TO PCB TOP)



±0.60
CENTERING OF THE
POWER RECEPTACLE
Vs RECEPTACLE CAVITY

REFERENCE POINT

NOTES:

1. IF A SCREW TYPE BULKHEAD IS USED, THEN THE CASTED MOUNTING PANEL SHOULD HAVE ON ITS REAR SIDE AN INTEGRAL RECTANGULAR REINFORCED RIBS OF 6MM THICKNESS AND 4MM WIDTH ALONG THE MOUNTING SCREW PLANE AT THE TOP AND BOTTOM TO ACCOMODATE THE BLIND INTERNAL SCREW THREAD. IT IS NOT APPLICABLE FOR INTEGRATED BULKHEAD CASTED WITH MOUNTING PANEL
2. IF THE BULKHEAD IS SCREW TYPE THEN THE SCREWS TO BE USED ARE M3; RECOMMENDED SCREW - M3X8MM; MATERIAL-STAINLESS STEEL
3. BULKHEAD PART NO. -10138461-101LF

Amphenol
FCi

© 2020 Amphenol Corporation

spec ref	-	dr	Alosius, Stali	2015/09/23	projection	mm	size	A3	scale	1:2
tolerance std	ISO 406 ISO 1101	eng	Alosius, Stali	2022/05/18			ecn no	ELX-I-44756-1		
TOLERANCES UNLESS OTHERWISE SPECIFIED		chr	-	-			rel level	Released		
surface	linear	0.X	±0.3		Amphenol FCi	HYBRID SIGNAL&POWER OCTIS RA BOARD CONNECTOR 8 SIG 2 PWR PIP TERMINATION	cat. no.	Product - Customer Drw	sheet 7 of 7	rev G
		0.XX	±0.10							
0.XXX	±0.050									
ISO 1302	angular	0°	±2°							