

**SCM 2CO P****Weidmüller Interfaces GmbH & Co. KG**

Postfach 3030

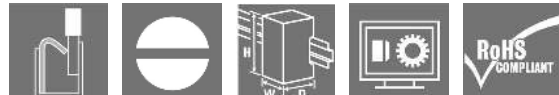
32760 Detmold

Tel. +49 5231 14-0

Fax. +49 5231 14-2083

info@weidmueller.com

www.weidmueller.com

**Product image**

Relay sockets for the D-SERIES DRM relays

- 2 and 4 CO contacts
- Screw and PUSH IN connection
- Standard and low heights

**General ordering data**

Version	D-SERIES DRM, Relay socket, Number of contacts: 2, CO contact, Continuous current: 12 A, PUSH IN
Order No.	<a href="#">7760056362</a>
Type	SCM 2CO P
GTIN (EAN)	6944169772269
Qty.	10 pc(s).

## SCM 2CO P

Weidmüller Interfaces GmbH &amp; Co. KG

Postfach 3030

32760 Detmold

Tel. +49 5231 14-0

Fax. +49 5231 14-2083

info@weidmueller.com

## Technical data

www.weidmueller.com

1.681 inch

4.008 inch

1.205 inch

info@weidmueller.com

-40 °C...85 °C

Operating temperature

-40 °C...55 °C

5...85 %, no condensation

## Environmental Product Compliance

REACH SVHC Lead 7439-92-1

## Rated data UL

Certificate No. (cURus) E355547

## Load side

Rated switching voltage 250 V AC

Continuous current

12 A

Max. switching voltage, AC 250 V

Contact type

2 CO contact

## General data

Rail TS 35

Colour black

UL94 flammability rating component

Component

Retaining clip

UL94 flammability rating

HB

Component

Mounting foot

UL94 flammability rating

HB

Component

Pusher

UL94 flammability rating

HB

Component

Housing

UL94 flammability rating

V-2

## Insulation coordination

Rated voltage 300 V

Pollution severity

2

Surge voltage category III

Insulating material group

IIIb

Clearance and creepage distances for control side - load side

≥ 3 mm

Dielectric strength for control side - load side

4 kV<sub>eff</sub> / 1 min

Dielectric strength of neighbouring contacts

2.5 kV<sub>eff</sub> / 1 Min.

Dielectric strength of open contact

2.5 kV<sub>eff</sub> / 1 Min.

Impulse withstand voltage at neighbouring contacts

4.8 kV (1.2/50 μs)

Protection degree

IP20

## Further details of approvals / standards

Certificate No. (cURus) E355547

## SCM 2CO P

Weidmüller Interfaces GmbH &amp; Co. KG

Postfach 3030

32760 Detmold

Tel. +49 5231 14-0

Fax. +49 5231 14-2083

[info@weidmueller.com](mailto:info@weidmueller.com)[www.weidmueller.com](http://www.weidmueller.com)

## Technical data

## Connection data

Wire connection method	PUSH IN	Stripping length, rated connection	10 mm
Clamping range, rated connection	1.5 mm <sup>2</sup>	Clamping range, min.	0.14 mm <sup>2</sup>
Clamping range, max.	1.5 mm <sup>2</sup>	Wire connection cross section AWG, min.	AWG 26
Wire connection cross section AWG, max.	AWG 16	Wire cross-section, solid, min.	0.14 mm <sup>2</sup>
Wire cross-section, solid, max.	1.5 mm <sup>2</sup>	Wire connection cross section, finely stranded, min.	0.14 mm <sup>2</sup>
Wire connection cross section, finely stranded, max.	1.5 mm <sup>2</sup>	Wire connection cross-section, finely stranded with wire-end ferrules DIN 46228/4, min.	0.14 mm <sup>2</sup>
Wire connection cross-section, finely stranded with wire-end ferrules DIN 46228/4, max.	1 mm <sup>2</sup>	Conductor cross-section, flexible, AEH (DIN 46228-1), min.	0.14 mm <sup>2</sup>
Conductor cross-section, flexible, AEH (DIN 46228-1), max.	1.5 mm <sup>2</sup>	Blade size	0.4 x 2.5 mm

## Classifications

ETIM 6.0	EC001456	ETIM 7.0	EC001456
ETIM 8.0	EC001456	ECLASS 9.0	27-37-16-03
ECLASS 9.1	27-37-16-03	ECLASS 10.0	27-37-16-03
ECLASS 11.0	27-37-16-03	ECLASS 12.0	27-37-16-03

## Important note

Product information Only connection A2 with the cross-connection SCM/SDI P CC (art. no. 7760056366) can be bridged on this socket.

## Approvals

Approvals



ROHS	Conform
UL File Number Search	UL Website
Certificate No. (cURus)	E355547

## Downloads

Approval/Certificate/Document of Conformity	<a href="#">EU Konformitätserklärung / EU Declaration of Conformity</a>
Engineering Data	<a href="#">CAD data – STEP</a>
Engineering Data	<a href="#">EPLAN</a>
Catalogues	<a href="#">Catalogues in PDF-format</a>

SCM 2CO P

Weidmüller Interfaces GmbH & Co. KG

Postfach 3030

32760 Detmold

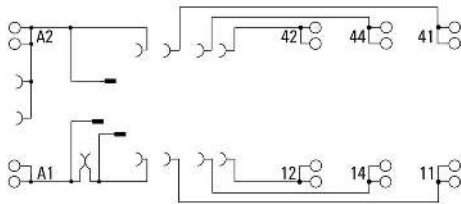
Tel. +49 5231 14-0

Fax. +49 5231 14-2083

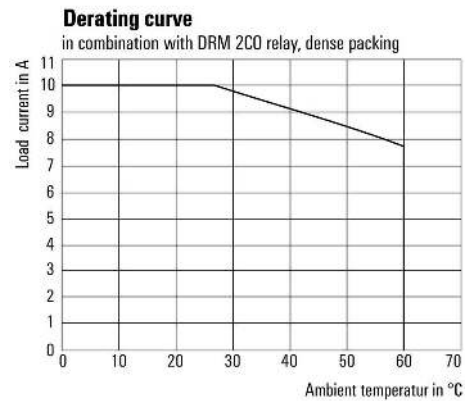
info@weidmueller.com

Drawings

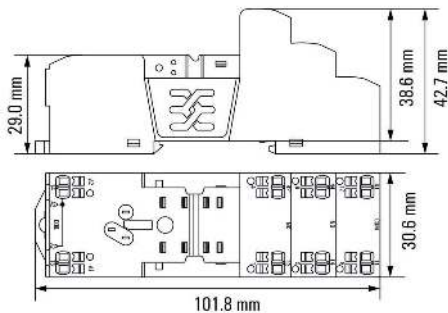
Wiring diagram



Graph



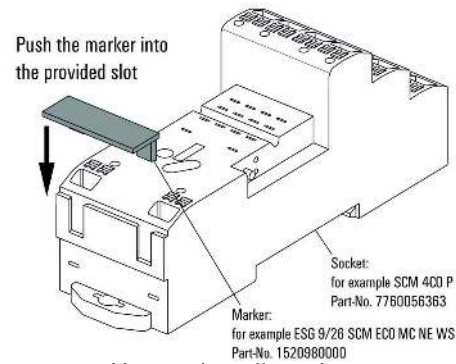
Dimensional drawing



Example of use  
In combination with DRM 2CO relay, dense packing

How to install marker

on PUSH IN connection sockets (one slot available)



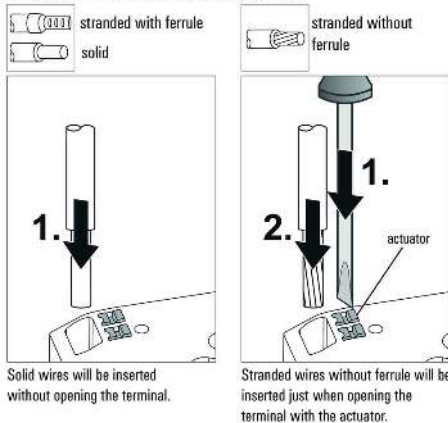
How to install marker

on PUSH IN connection sockets (one slot available)

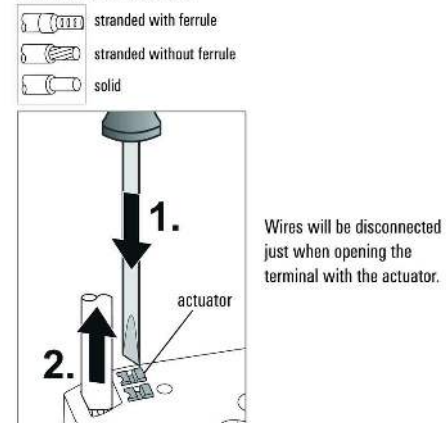
Miscellaneous

Miscellaneous

Insert flexible and solid cables



Removal of cables



**SCM 2CO P**

**Weidmüller Interfaces GmbH & Co. KG**

Postfach 3030

32760 Detmold

Tel. +49 5231 14-0

Fax. +49 5231 14-2083

info@weidmueller.com

www.weidmueller.com

**Drawings**

**Miscellaneous**

**Recommended screwdriver**

to push the actuator in **PUSH IN**



Ø 2,5mm  
Screwdriver  
SDS 0,4 x 2,5 x 75  
9009030000