

4

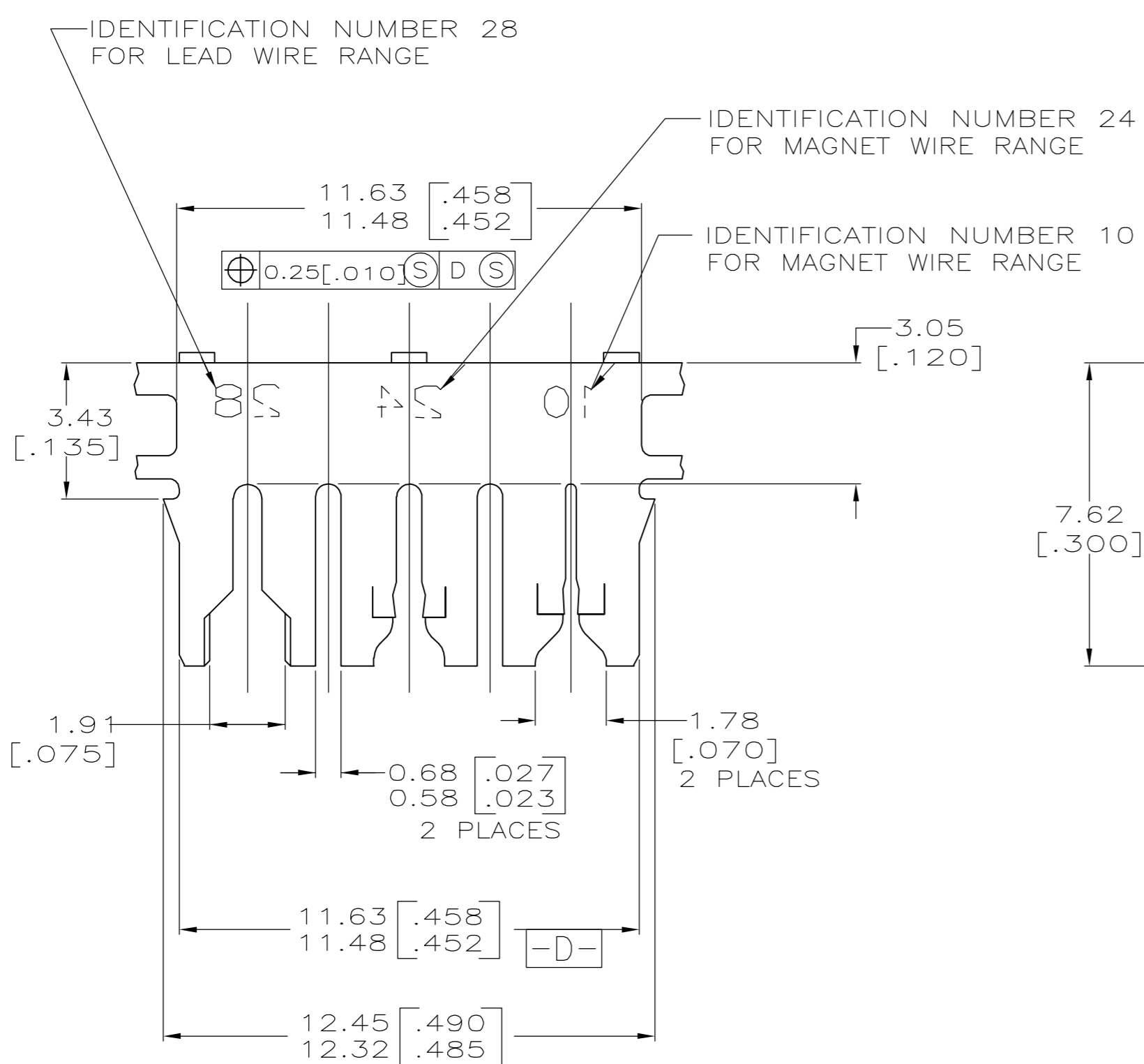
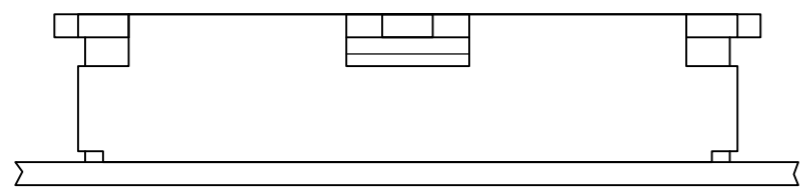
3

2

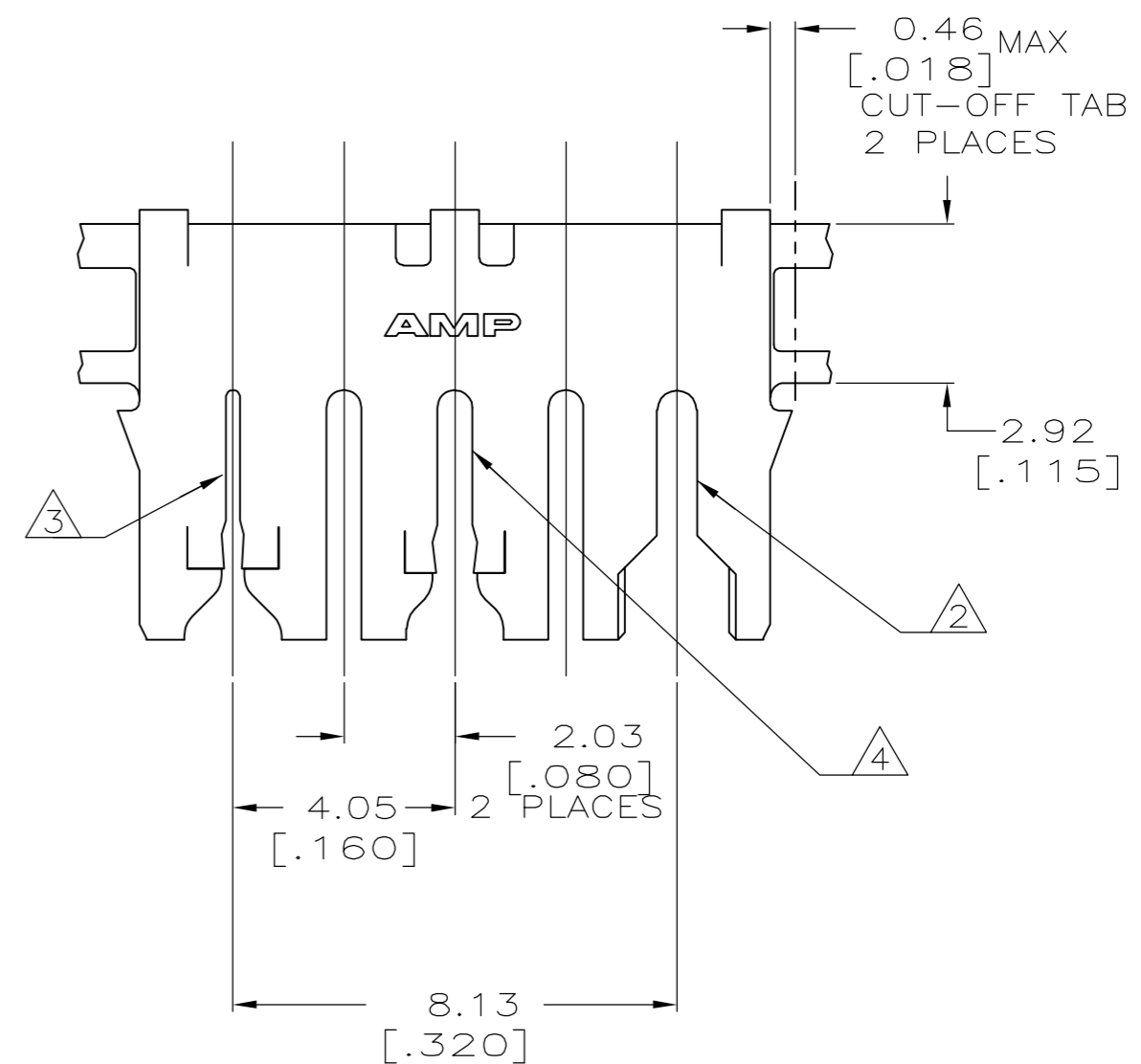
1

THIS DRAWING IS UNPUBLISHED. RELEASED FOR PUBLICATION .19
 © COPYRIGHT 19 BY AMP INCORPORATED. ALL RIGHTS RESERVED.

LOC		DIST		REVISIONS			DATE	DWN	APVD
AF	50	P	LTR	DESCRIPTION			07OCT2004	RF	KR
		D		REV PER 0G3A-0759-04					



- 1 CONTINUOUS STRIP ON REELS WITH TERMINALS LOCATED ON 13.97±0.08 [.550±.003] CENTERS.
- 2 SLOT TERMINATES A SINGLE 0.8-0.9mm² [#18] AWG TIN PLATED SOLID, FUSED STRANDED OR STRANDED (7, 16, OR 19 STRANDS) WIRE WITH PET INSULATION, 2.03[.080] MAX DIA.
- 3 SLOT TERMINATES A SINGLE MAGNET WIRE, OR TWO WIRES MAX OF THE SAME SIZE PER SLOT. COPPER RANGE: 0.36-0.57mm [#27-#23] AWG
- 4 SLOT TERMINATES A SINGLE MAGNET WIRE ONLY. COPPER RANGE: 0.91-1.15mm [#19-#17] AWG
- 5 MTA PRODUCT SPEC IS 108-1051
MAG-MATE PRODUCT SPEC IS 108-2012
- 6 MAG-MATE APPLICATION SPEC IS 114-2046
MTA APPLICATION SPEC IS 114-1020
- 7 MATES WITH STANDARD MAG-MATE STYLED POKE-IN TAB TERMINAL.
- 8 TERMINALS ARE STRESS RELIEVED
- 9 DIMENSION APPLIES WITH LEAF EDGE TOUGHING CARRIER SIDE OF BOX



63975-1
PART NUMBER

THIS DRAWING IS A CONTROLLED DOCUMENT.		DWN	14APR97	AMP	AMP Incorporated	
		R.GRZYBOWSKI	14APR97		Harrisburg, PA 17105-3608	
DIMENSIONS:		CHK	14APR97	NAME		
mm[INCHES]		M.S.FEHER	14APR97	KURT A. RANDOLPH		
		APVD	14APR97	PRODUCT SPEC		
		APPLICATION SPEC			SIZE	
		96-1039-143			CAGE CODE	
MATERIAL		WEIGHT			DRAWING NO	
4M BRASS		-			A2 00779	
FINISH		CUSTOMER DRAWING			DRAWING NO	
0.02032 [.000080] MIN TIN					96-1039-143	
					CAGE CODE	
					00779	
					DRAWING NO	
					C-63975	
					SCALE	
					8:1	
					SHEET	
					1 OF 1	
					REV	
					D	

63975

A