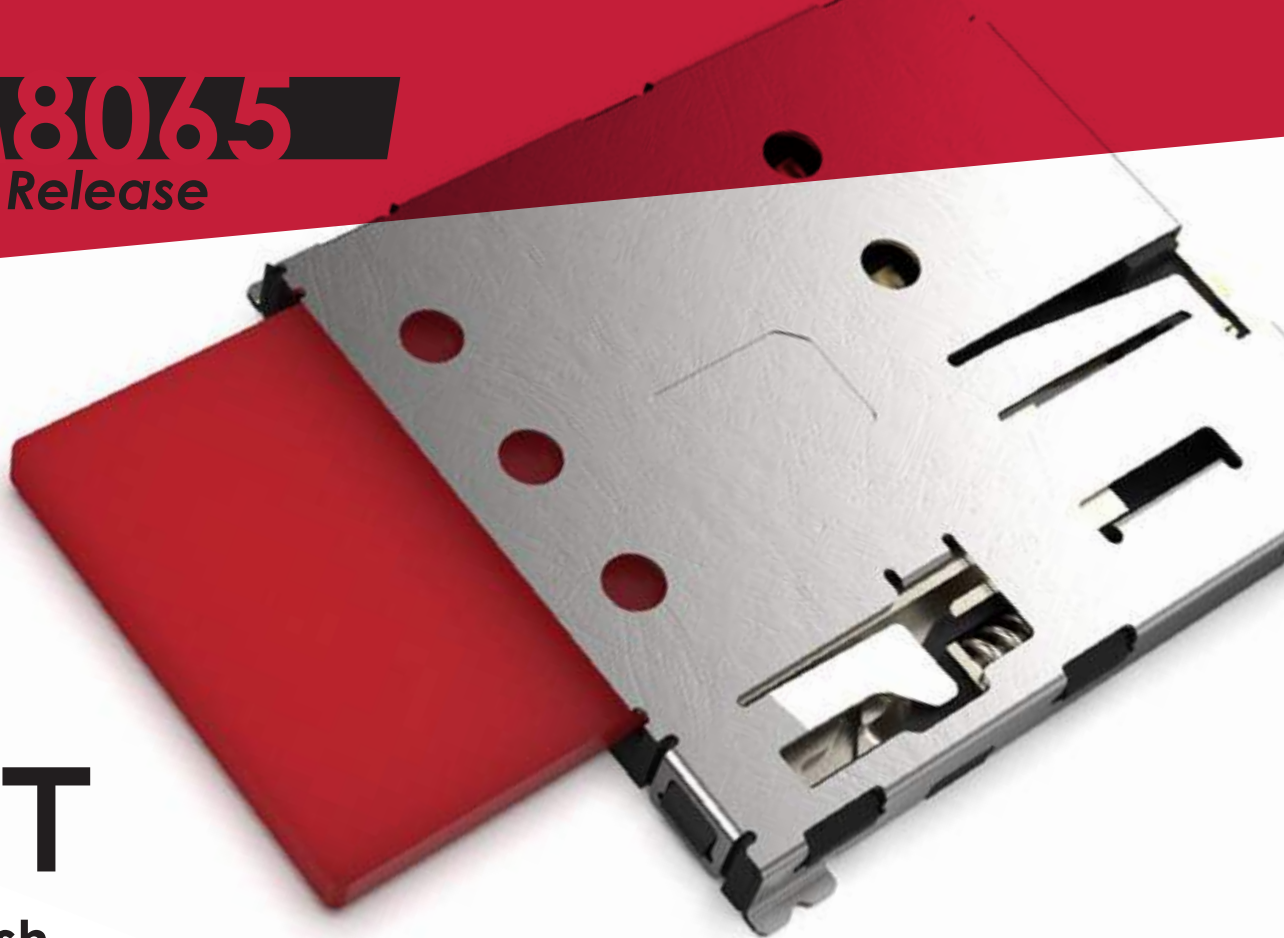


SIM8065

Product Release



GCT

Push-Push
Nano SIM Card Connector

www.gct.co

Vital Stats

SIM8065 is the first push-push Nano SIM card connector from GCT, combining the tiny form factor of the Nano SIM format with strong card retention and ease of access afforded by the spring-loaded card eject mechanism.

SIM Card Type

Nano

Card Eject Mechanism

Push-Push

Operating Temp.

-40 to +85°C

Mating Cycles

5,000

Card Detect Switch

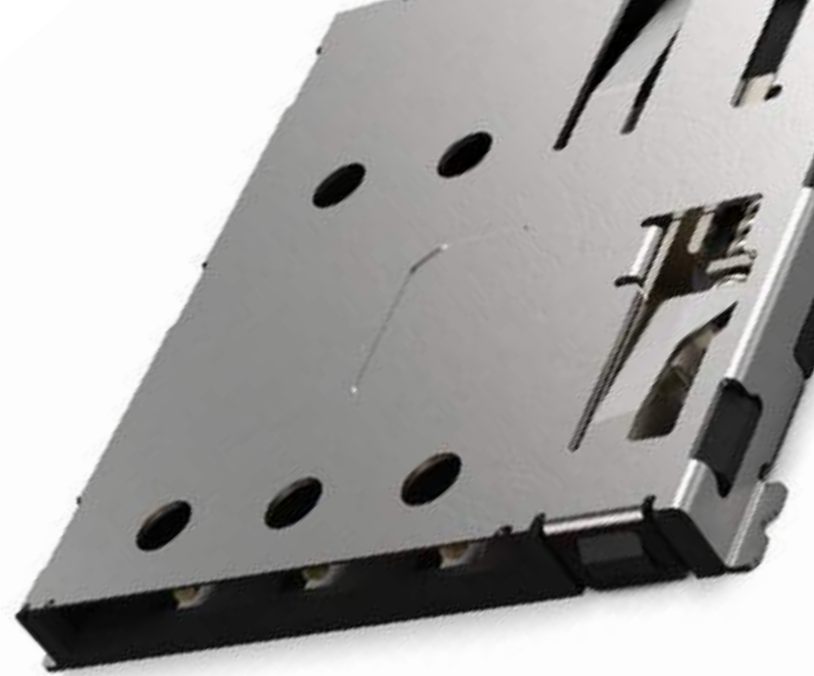
Yes

Shell

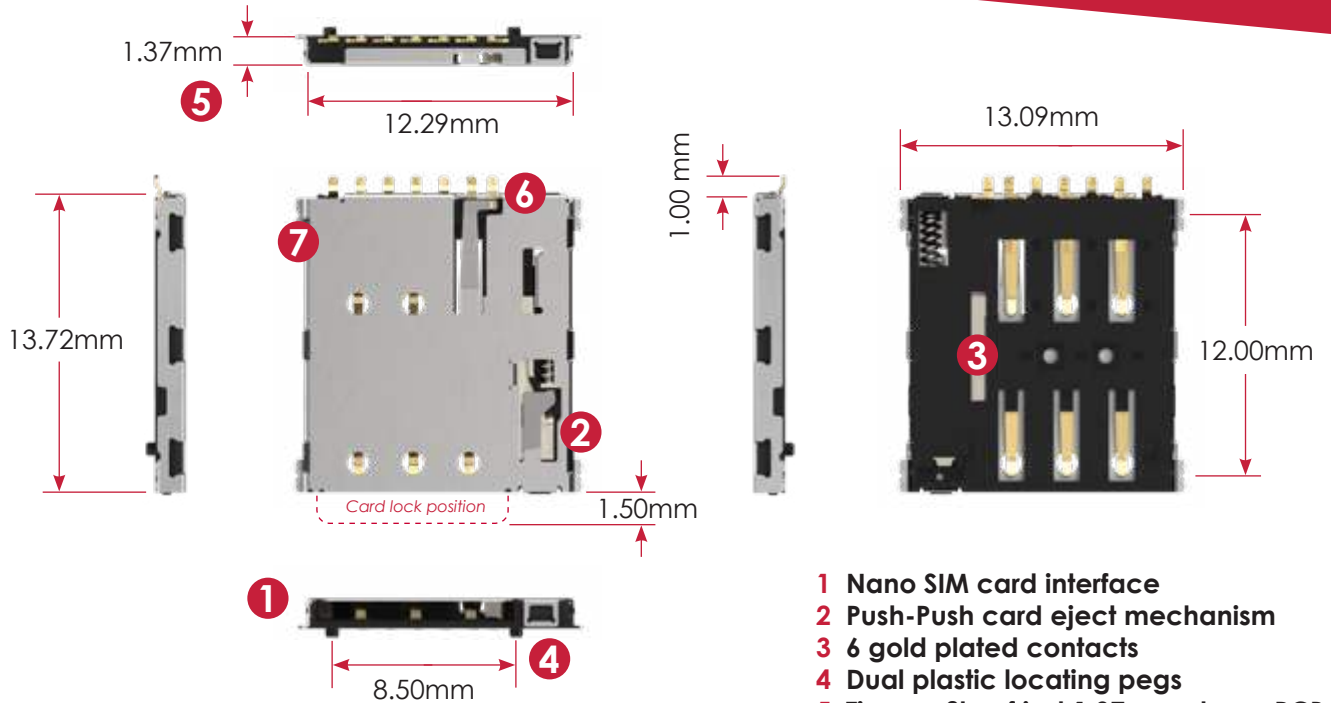
Stainless Steel

With a shell solder tab on each corner and dual plastic locating pegs, SIM8065 is rock solid when mounted to the PCB, allowing a rating of 5,000 mating cycles.

- Gold plated contacts.
- Supplied in tape & reel packaging (1500 pieces per reel)



Plan View



- 1 Nano SIM card interface
- 2 Push-Push card eject mechanism
- 3 6 gold plated contacts
- 4 Dual plastic locating pegs
- 5 Tiny profile of just 1.37mm above PCB
- 6 Card Detect switch
- 7 Polarised card stop

gct.co/connector/sim8065

Nano SIM Range



SIM8051

- Push-Pull Nano SIM card connector
- 6 contacts without card detect switch
- Outer shell tabs, shell stake & optional locating peg
- 1.35mm profile from PCB



SIM8055

- Push-Pull Nano SIM card connector
- Innovative split contact card detection switch
- Outer shell tabs, shell stake & optional locating peg
- 1.35mm profile from PCB



SIM8060

- Hinge & lock Nano SIM card connector
- Optional split contact card detection switch
- Outer shell tabs & polarised card stop
- 1.43mm profile from PCB