

# MB12S thru MB110S

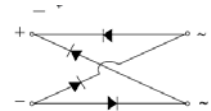
Surface Mount Schottky Bridge Rectifier  
 Reverse Voltage 20 to 100V Forward Current 1A

## Features

- Plastic package has Underwriters Laboratory Flammability Classification 94V-0
- High surge overload rating:30A peak
- Space saving
- High temperature soldering guaranteed:260°C/10 seconds



Package:TO-269AA (MBS)



Schematic Diagram

## Mechanical Data

- Case: Molded plastic body over passivated junctions
- Terminals: plated leads solderable per MIL-STD-750 Method 2026
- Mounting Position: Any
- Weight: 0.078oz., 0.22g

## Maximum Ratings & Electrical Characteristics

( $T_A=25^\circ\text{C}$  unless otherwise noted)

Parameter	Symbol	MB12S	MB14S	MB16S	MB18S	MB110S	Unit
Maximum Repetitive Peak Reverse Voltage	$V_{RRM}$	20	40	60	80	100	V
Maximum RMS Voltage	$V_{RMS}$	14	28	42	56	70	V
Maximum DC Blocking Voltage	$V_{DC}$	20	40	60	80	100	V
Maximum Average Forward Output Current	$I_{F(AV)}$	1.0					A
Peak Forward Surge Current 8.3 MS Single Half Sine-Wave Superimposed on Rated Load (JEDEC Method)	$I_{FSM}$	30					A
Maximum Instantaneous Forward Voltage at 1.0A	$V_F$	0.50		0.70		0.85	V
Maximum DC Reverse Current at Rated DC Blocking Voltage per Leg	$I_R$	0.5					mA
Typical Thermal Resistance per Leg (Note1)	$R_{\theta JA}$	88					°C/W
	$R_{\theta JL}$	28					
Operation Junction Temperature Range	$T_j$	-55 to +125					°C
Storage Temperature Range	$T_{STG}$	-55 to +150					°C

**Notes:** 1. Thermal resistance from junction to ambient and from junction to lead P.C.B. mounted on 0.2×0.2"(5.0×5.0mm) copper pad areas.

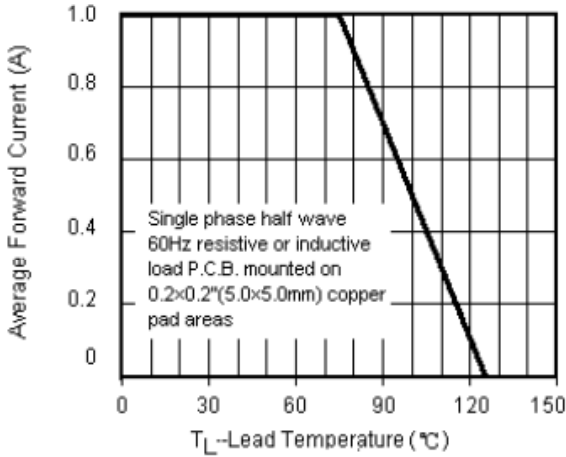
# MB12S thru MB110S

Surface Mount Schottky Bridge Rectifier  
 Reverse Voltage 20 to 100V Forward Current 1A

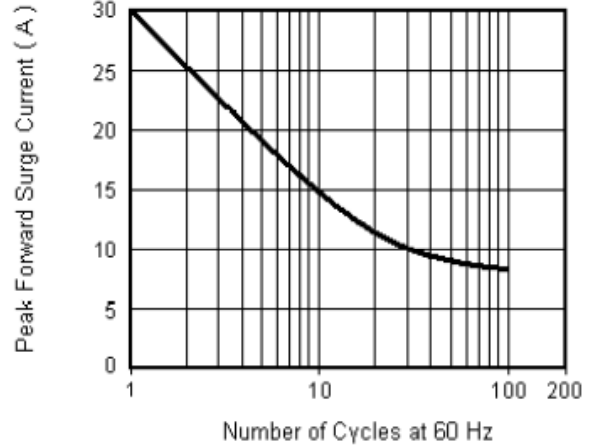
## Ratings and Characteristics Curves

( $T_A = 25^\circ\text{C}$  unless otherwise noted)

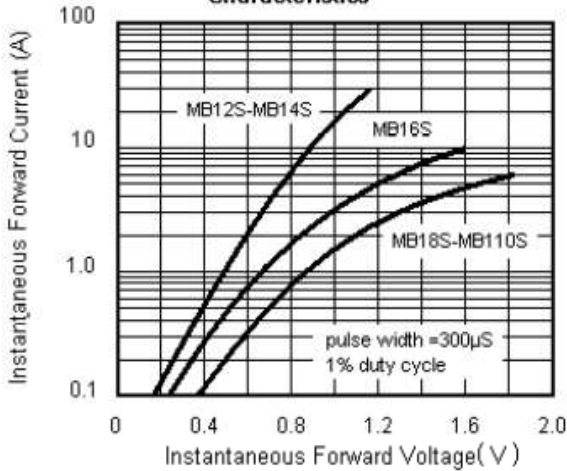
**Fig.1 Forward Current Derating Curve**



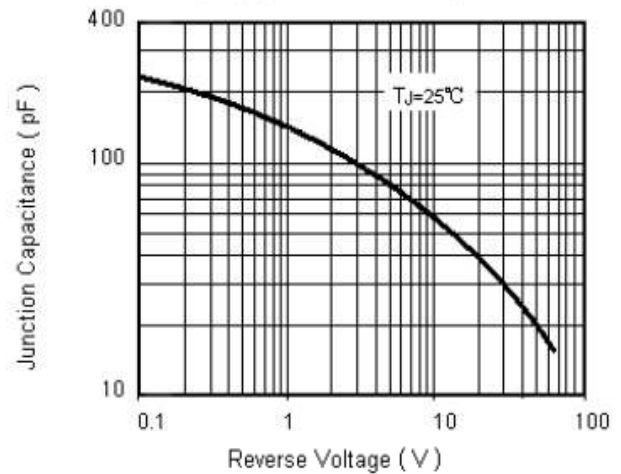
**Fig.2 Maximum Non-Repetitive Peak Forward Surge Current**



**Fig.3 Typical Instantaneous Forward Characteristics**



**Fig.4 Typical Junction Capacitance**

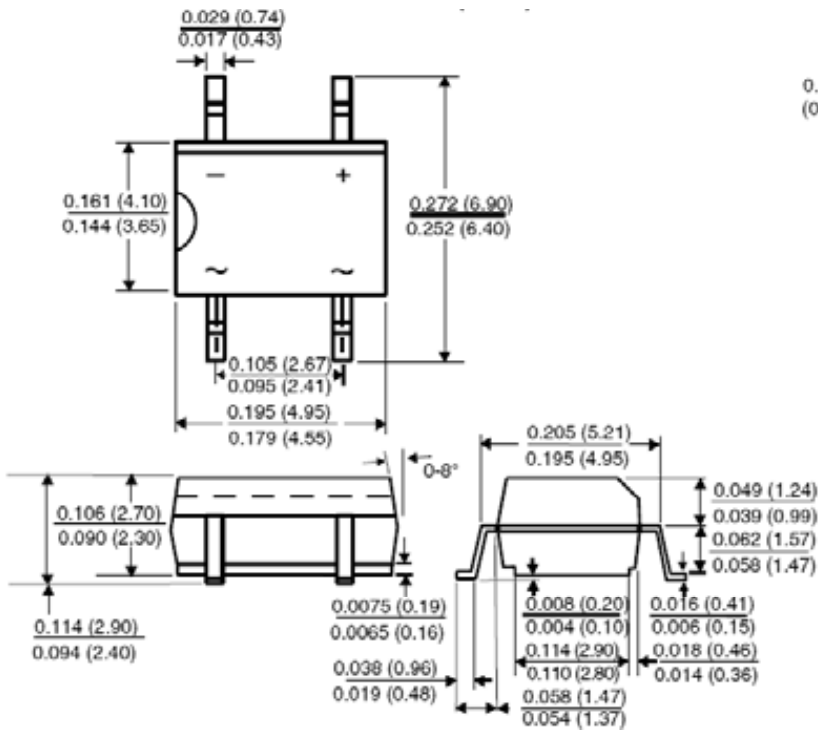


# **MB12S thru MB110S**

Surface Mount Schottky Bridge Rectifier  
 Reverse Voltage 20 to 100V Forward Current 1A

## **Package Outline Dimensions**

**TO-269AA (MBS)**



Dimensions in inches and (millimeters)

## **Mounting Pad Layout**

