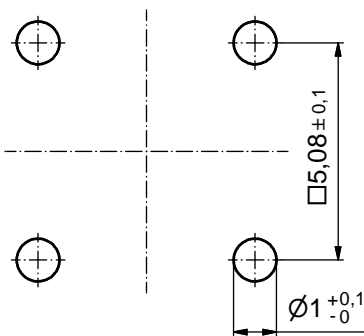


| PLATING ITEM 1 | PART-NO. |
|--|------------|
| GOLD FLASH over NICKEL | 124A10019X |
| 30µin HARD GOLD over min. 50µin NICKEL | 124C10019X |

ⓑ NOTES:

1. MATERIAL: COPPER ALLOY
2. PLATING:
 - ITEM 1: SEE TABLE
 - ITEM 2: GOLD FLASH over NICKEL
 - ITEM 3: GOLD FLASH over NICKEL
 - ITEM 4: NICKEL PLATED

P.C.B. HOLE DRILLINGS ⓑ



Directive 2002/95/EC RoHS compliant

| | | | | | | | | |
|---|--|-------------|--|-----------------|--|---|---------------------|--------------------|
| THIS DRAWING MAY NOT BE COPIED OR REPRODUCED IN ANY WAY, AND MAY NOT BE PASSED ON TO A THIRD PARTY WITHOUT WRITTEN PERMISSION. OWNERSHIP AND COPYRIGHT OF CONEC GmbH DO NOT ALTER CAD DRAWING BY HAND | | | | tolerance | | dim. in mm | scale: 10:1 | |
| | | | | date | | | material: SEE NOTES | |
| drawn | | 08.01.01 | | E. Mickenbecker | | title: HIGH POWER CONTACT FEMALE SOLDER PIN 90° for DIN EN 60603 TYPE "M" | | |
| appd. | | 08.01.01 | | J.Parei | | | | |
| norm | | | | | | | | |
| d-old | | | | | | dwg no: | | DIN-A3 |
| 5 x b | | Ä4578 | | 12.12.2012 | | Lehm. | | sh: 1 |
| a | | Original | | | | 12K1A031A | | |
| rev. | | description | | date | | name | | part no: SEE TABLE |
| | | | | | | | | |
| | | | | | | | | |