

PART NUMBER  
SEE PART NUMBER LOGIC

PART NUMBER LOGIC:

10142708-XX X X X X X LF

POST TYPE OPTION  
BLANK: TYPE A (SHEET 1)  
1: TYPE B (SHEET 2)  
2: TYPE C (SHEET 2, ONLY FOR 2 POSITION)

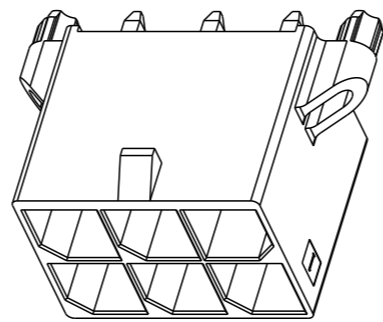
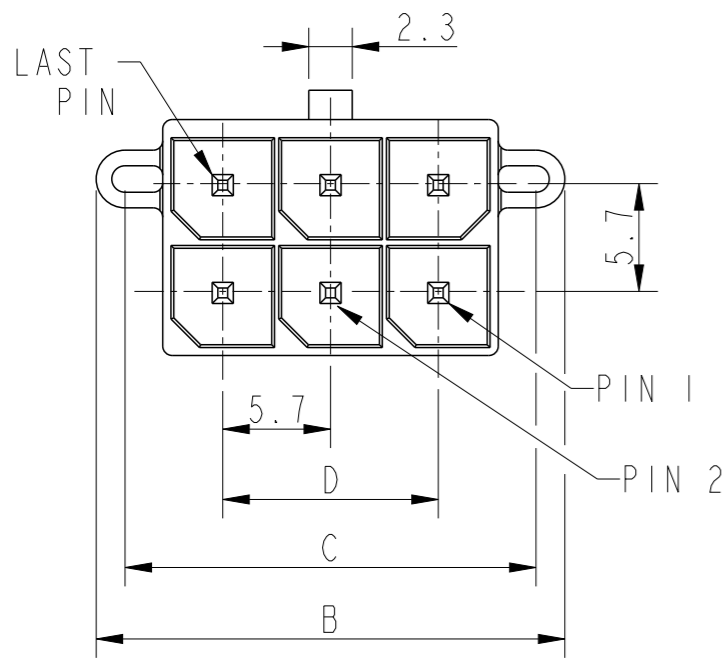
PACKAGE:  
0: TRAY  
1: TAPE&REEL WITHOUT PICK UP CAP  
2: TAPE&REEL WITH PICK UP CAP (SEE PAGE 2)  
Q: TAPE&REEL WITHOUT PICK UP CAP (CUSTOMER SPECIAL)

MATERIAL:  
0: LCP

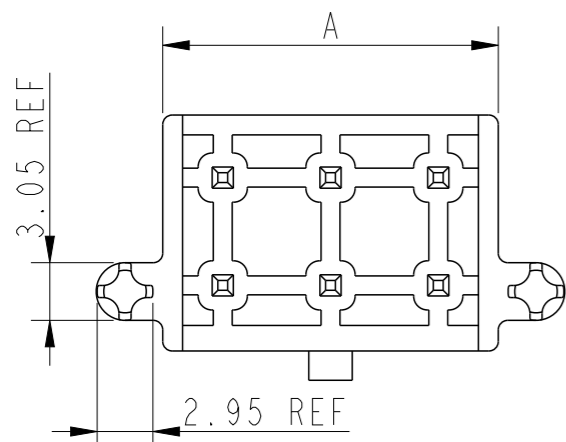
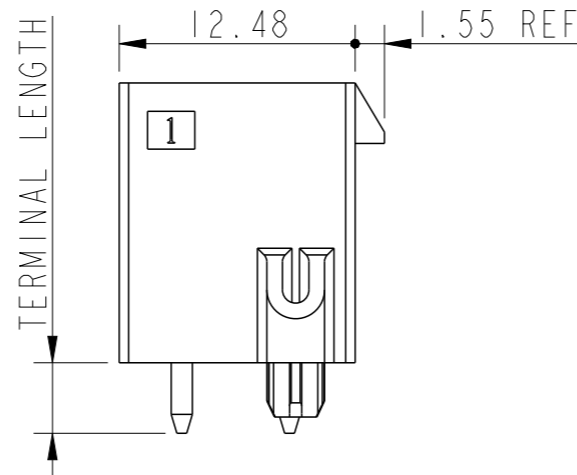
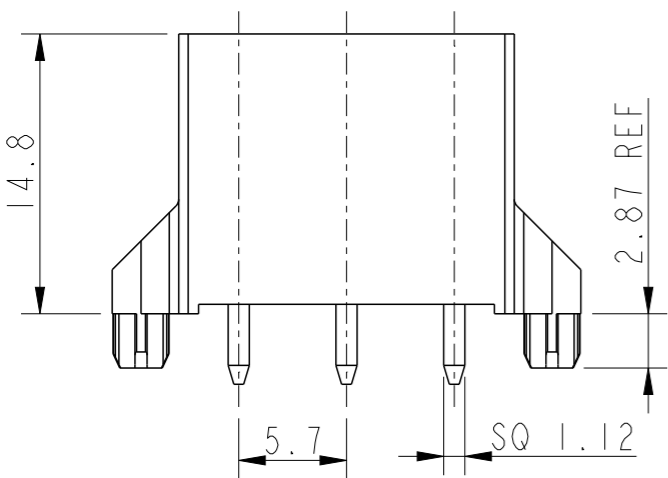
PLATING:  
0: 30u" MINIMUM GOLD PLATING ON CONTACT AREA AND 100u" MINIMUM MATTE TIN PLATING ON SOLDER TAIL, 50u" MINIMUM Ni UNDER PLATED  
1: 15u" MINIMUM GOLD PLATING ON CONTACT AREA AND 100u" MINIMUM MATTE TIN PLATING ON SOLDER TAIL, 50u" MINIMUM Ni UNDER PLATED  
2: 100u" MINIMUM MATTE TIN PLATING OVER ALL, 50u" Ni UNDER PLATED

TERMINAL LENGTH  
BLANK : 3.73mm  
A : 4.30mm  
B : 5.20mm

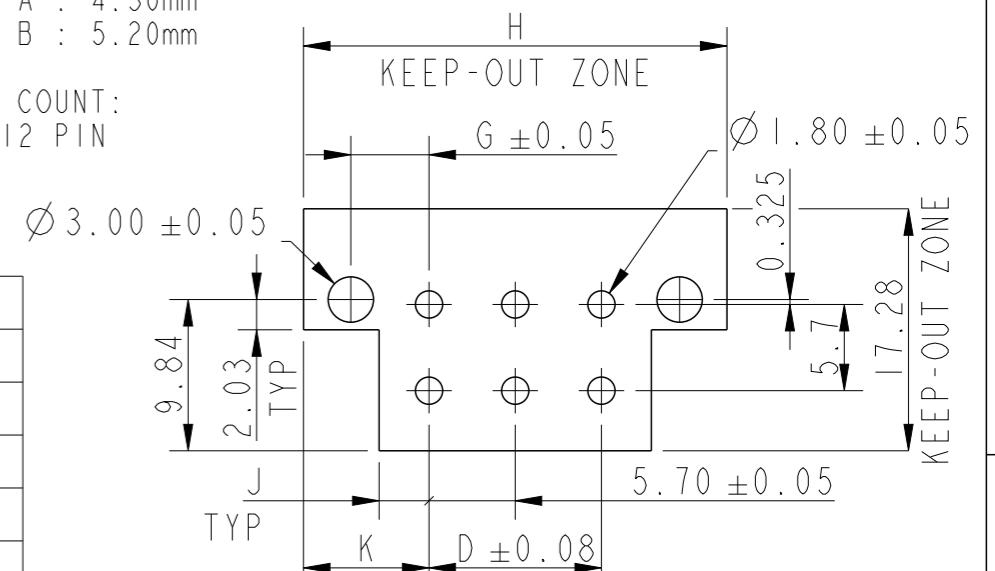
PIN COUNT:  
02~12 PIN



POST TYPE A

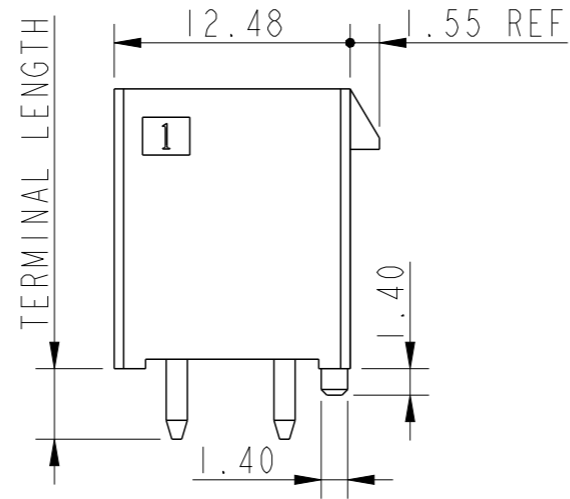
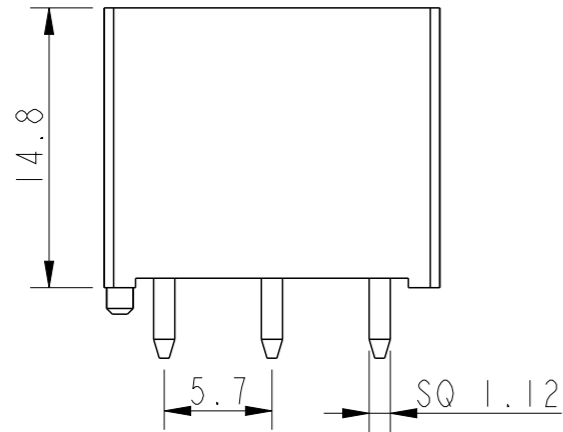
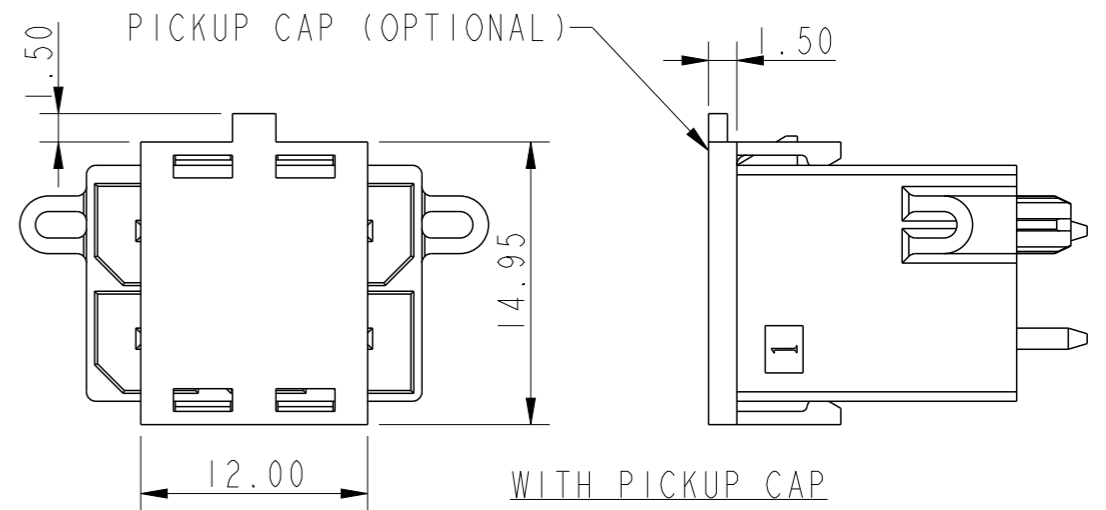
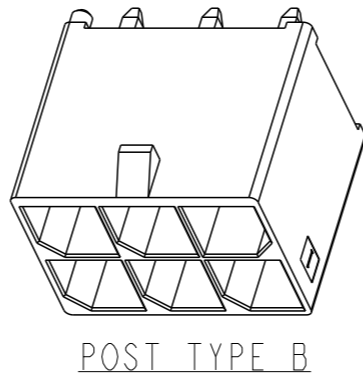
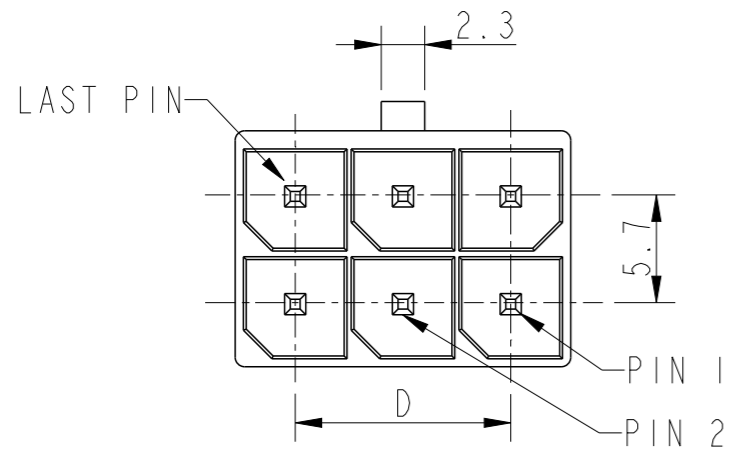


PIN	DIM A	DIM B	DIM C	DIM D	DIM G	DIM H	DIM J	DIM K
02	8.35	15.39	12.34	-	6.17	16.40	4.69	8.20
04	12.05	19.10	16.04	5.70	5.17	20.10	3.69	7.20
06	17.75	24.80	21.74	11.40	5.17	25.80	3.69	7.20
08	23.45	30.50	27.44	17.10	5.17	31.50	3.69	7.20
10	29.15	36.20	33.14	22.80	5.17	37.20	3.69	7.20
12	34.85	41.90	38.84	28.50	5.17	42.90	3.69	7.20



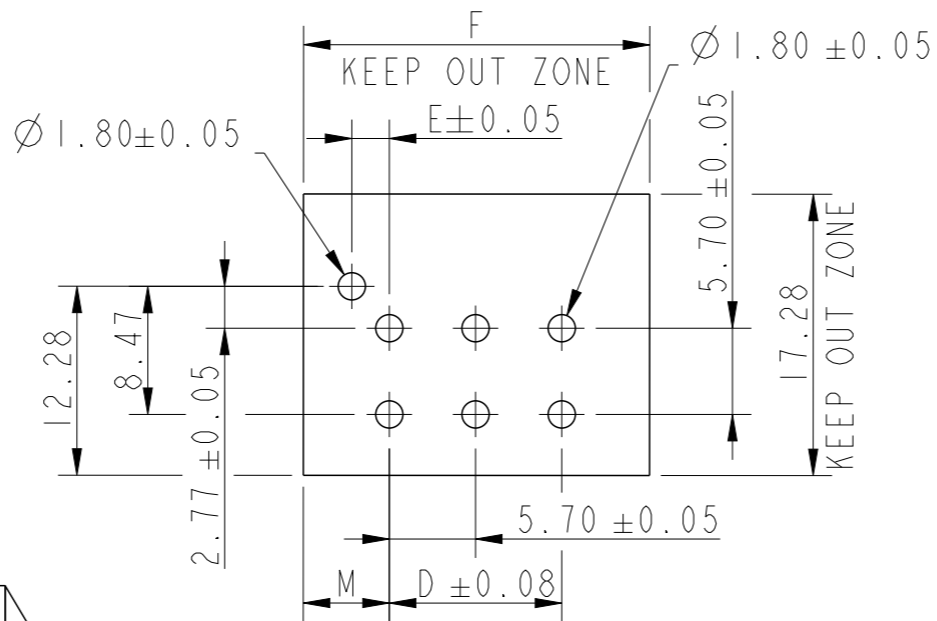
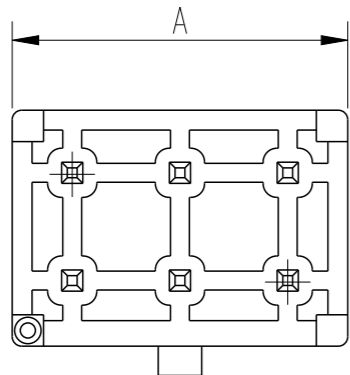
RECOMMENDED PCB LAYOUT  
PCB THK=1.58~2.36mm

spec ref	dr	Tony Leng	2017/12/01	projection	mm	size	A3	scale	5:2
tolerance std	eng	Paul Mithun	2022/08/05		mm	ecn no	ELX-I-45110-1	rel level	Released
ISO 406 ISO 1101	chr	-	-						
surface	linear	0.X	±0.30		Dual Row Vertical Header Minitek Power 5.7	dwg no	10142708	rev	F
		0.XX	±0.20						
ISO 1302	angular	0°	±2°	cat. no.	Product - Customer Drw	sheet 1 of 3			



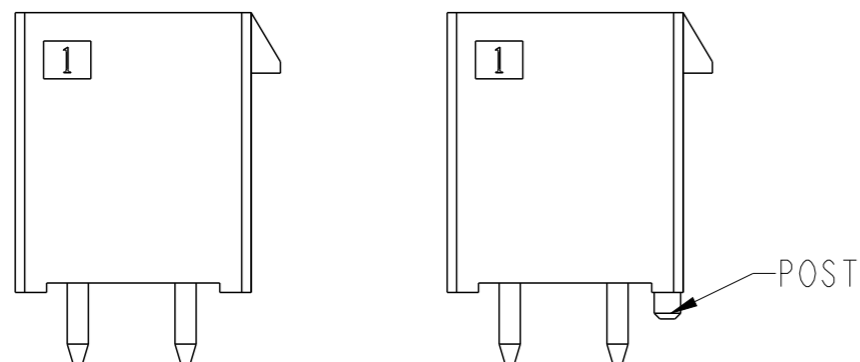
NOTES:

- MATERIAL:  
HOUSING : LCP UL94V-0, HALOGEN FREE, GLOW WIRE COMPATIBLE, BLACK.  
CONTACT : HIGH CONDUCTIVITY COPPER
- PLATING :  
CONTACT AREA : OPTIONAL, SEE P/N LOGIC  
SOLDER AREA : 100u" MINIMUM MATTE TIN  
UNDER LAYER : 50u" MINIMUM NICKEL
- RoHS COMPLIANT.
- REFER GS-20-0687 APPLICATION SPECIFICATION FOR MATING CONNECTOR
- PRODUCT SPECIFICATION: GS-12-1405.
- PACKAGE SPECIFICATION: GS-14-2595.
- APPLICATION SPECIFICATION: GS-20-0687.
- THE HOUSING CAN WITHSTAND EXPOSURE TO 260°C PEAK TEMP FOR 10 SECONDS IN A REFLOW OVEN.
- THE HOUSING CAN WITHSTAND EXPOSURE TO 260°C PEAK TEMP FOR 5 SECONDS IN A WAVE SOLDER.
- THIS LF PRODUCT MEETS EUROPEAN UNION DIRECTIVES AND OTHER COUNTRY REGULATIONS AS DESCRIBED IN GS-47-0004



RECOMMENDED PCB LAYOUT  
PCB THK=1.58~2.36mm

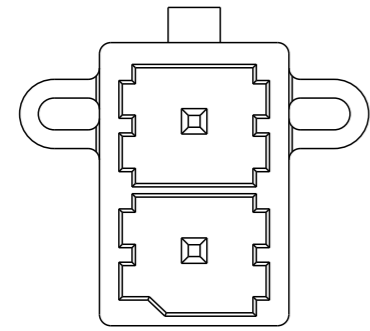
PIN	DIM A	DIM D	DIM E	DIM F	DIM M
02	8.35	-	3.48	9.35	4.67
04	12.05	5.70	2.48	13.05	3.68
06	17.75	11.40	2.48	18.75	3.68
08	23.45	17.10	2.48	24.45	3.68
10	29.15	22.80	2.48	30.15	3.68
12	34.85	28.50	2.48	35.85	3.68



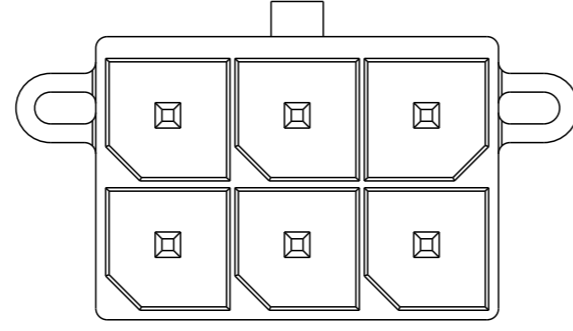
TYPE C (WITHOUT POST)

TYPE B (WITH POST)

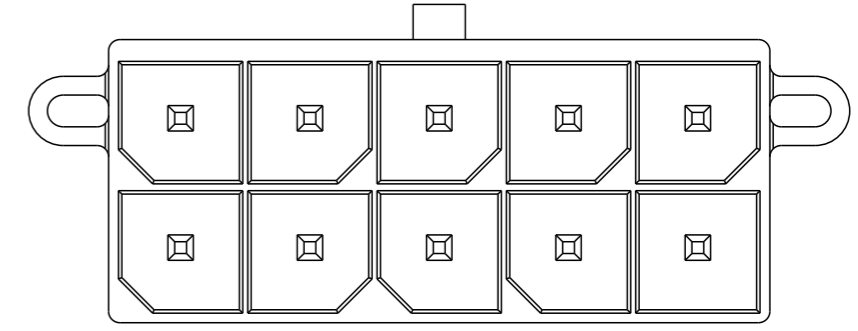
spec ref	dr	2017/12/01	projection	size	A3	scale	5:2
tolerance std	eng	2022/08/05		mm	ecn no	ELX-I-45110-1	rel level
ISO 406 ISO 1101	chr	-					
surface	appr	Kuriakose, San	2022/09/30	product family	dwg no	10142708	rev
ISO 1302	angular	0°	±2°	Minitek Power 5.7	cat. no.	Product - Customer Drw	sheet 2 of 3



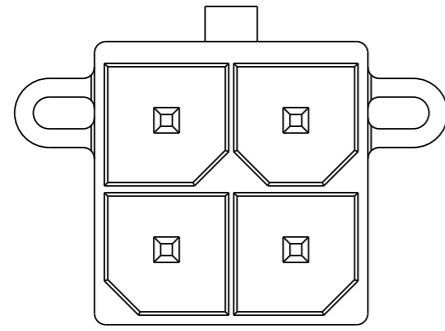
02P



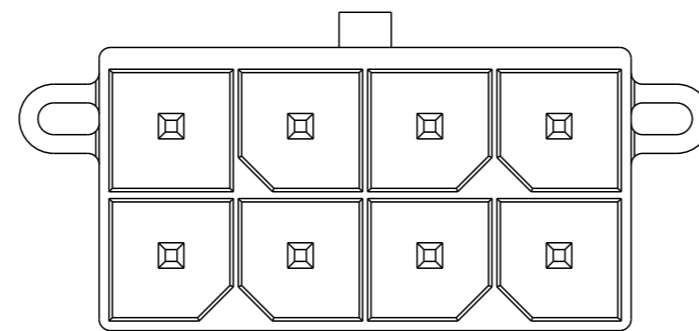
06P



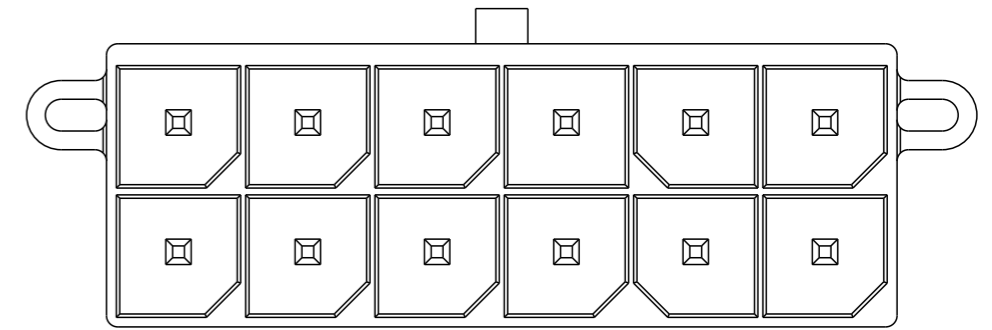
10P



04P



08P



12P

spec ref		dr	Tony Leng	2017/12/01	projection 	mm ←→	size	A3	scale	5:2
tolerance std ISO 406 ISO 1101		eng	Paul Mithun	2022/08/05			ecn no	ELX-I-45110-1		
TOLERANCES UNLESS OTHERWISE SPECIFIED		chr	-	-	product family		rel level	Released		
		appr	Kuriakose, San	2022/09/30	Dual Row Vertical Header		dwg no	10142708		rev
surface	linear	0.X	±0.30	Amphenol FCi	Minitek Power 5.7		cat. no.		Product - Customer Drw	
ISO 1302	angular	0.XX	±0.20		sheet 3 of 3					
		0.XXX	±0.10		PDS: Rev :F					
		0°	±2°	STATUS:Released		Printed: Sep 30, 2022				