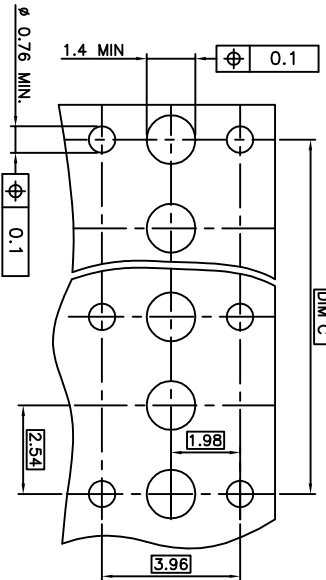


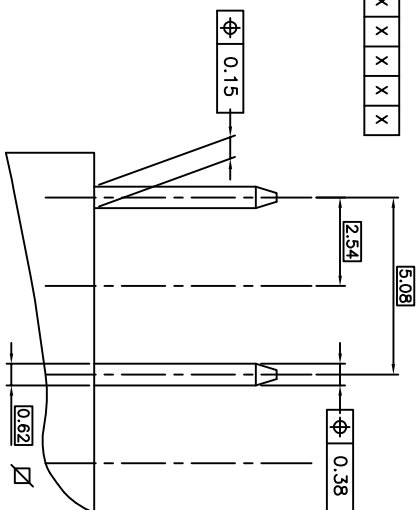
RECOMMENDED HOLES PATTERN

RECOMMENDED PC BOARD THICKNESS: 1.6 mm

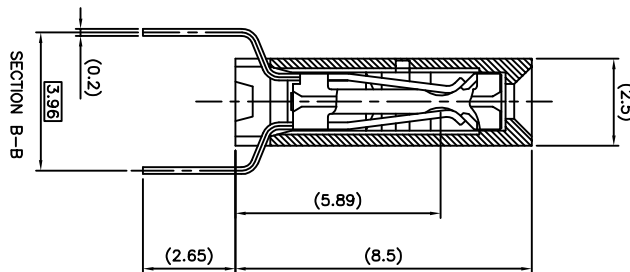
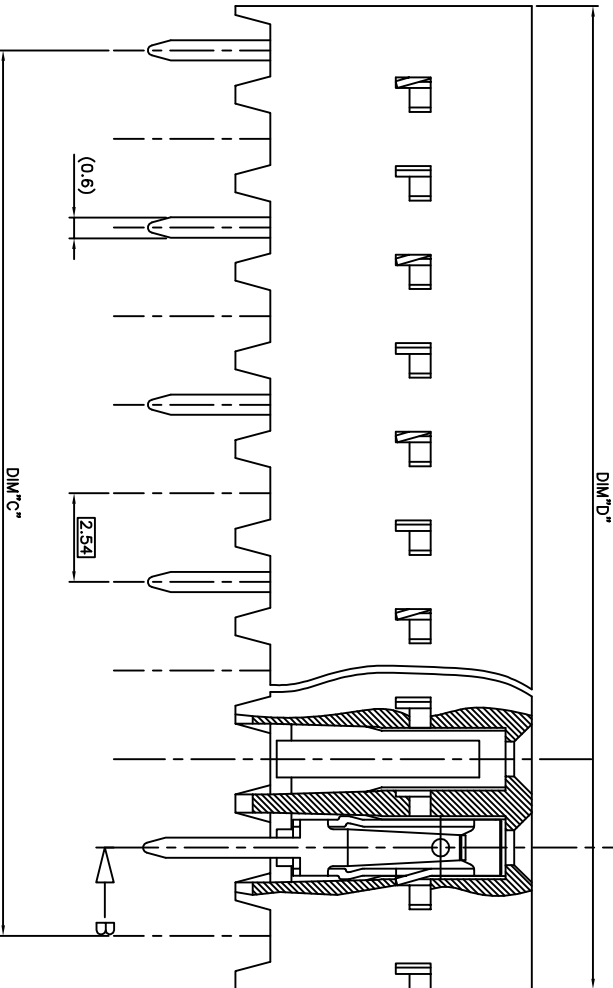


PRODUCT N°	HOUSING	DIM"C"	DIM"D"	CONTACT PLACED IN CAVITY (TABLE ACCORDING VIEW A)																											
				NB. OF TER.																											
95234-Y01LF	1 X 28 pos.	68.58	71.04	1	2	3	4	5	6	7	8	9	10	11	12	13	14	15	16	17	18	19	20	21	22	23	24	25	26	27	28
95234-Y02LF	1 X 13 pos.	30.48	32.94	X	X	X	X	X	X	X	X	X	X	X	X	X	X	X	X	X	X	X	X	X	X	X	X	X	X	X	X
95234-Y03LF	1 X 3 pos.	5.08	7.54	X	X	X	X	X	X	X	X	X	X	X	X	X	X	X	X	X	X	X	X	X	X	X	X	X	X	X	X
95234-Y04LF	1 X 7 pos.	15.24	17.70	X	X	X	X	X	X	X	X	X	X	X	X	X	X	X	X	X	X	X	X	X	X	X	X	X	X	X	X
95234-Y05LF	1 X 4 pos.	7.62	10.08	X	X	X	X	X	X	X	X	X	X	X	X	X	X	X	X	X	X	X	X	X	X	X	X	X	X	X	X
95234-Y06LF	1 X 14 pos.	33.02	35.48	X	X	X	X	X	X	X	X	X	X	X	X	X	X	X	X	X	X	X	X	X	X	X	X	X	X	X	X

ROHS COMPATIBLE,
SEE NOTE 4



RECOMMENDED PINS PATTERN



NOTES:

- 1 - MATERIAL HOUSING: THERMOPLASTIC POLYESTER 70% GULON FILLER, 30% BUTYL ACRYLATE, 10% FLAME RETARDANT PER UL-94 CATEGORY V0.
 - 2 - MATERIAL TERMINAL: PHOSPHOR BRONZE EXTRA HARD.
 - 3 - CONNECTOR TO BE USED ON PC BOARD WITH NON PLATED THROUGH HOLES
 - 4 - ROHS COMPATIBLE PRODUCT SPECIFICATIONS
- a - PLATING:
- "LF" MEANS THE PRODUCT IS LEAD-FREE, 2µm MINIMUM MATTE TIN OVER 1.27µm MINIMUM NICKEL UNDERPLATE.
- b - MANUFACTURING PROCESS COMPATIBILITY
- THE HOUSING WILL WITHSTAND EXPOSURE TO 260°C ±5°C SOLDER BATH TEMPERATURE FOR 5 SECONDS IN A WAVE SOLDER APPLICATION WITH A 1.6mm MIN THICK CIRCUIT BOARD.
- c - LABELING:
- MEETS PACKAGING SPECS AS PER GS-14-920
- d - LEGAL STATEMENT: SEE GS-47-0004

95234-4XXLF	5 µm Sn	Sn
95234-3XXLF	0.76 µm GOLD	Sn
PLATING CODE	CONTACT AREA	SOLDER TAIL
	PLATING THICKNESS OVER 1.27µm NI	

part. code	surface	tolerance	projection	product family
H F07-027(LMU) 071206	ISO 1992	ISO 406 ISO	10	DUAL ENTRY S.L
J B-16001(LMU) 131004	ISO 1992	ISO 406 ISO	30.3	OFF SET LEGS
K B-16504(LMU) 140908	ISO 1992	ISO 406 ISO	5Z	scale 10:1
L B-19123(LMU) 141021	ISO 1992	ISO 406 ISO	5Z	engr P.NZZZ 95.11.17
M B-19123(LMU) 141021	ISO 1992	ISO 406 ISO	5Z	engr DLEGRAND 95.11.17
F T04-034(DLE) 041115	ISO 1992	ISO 406 ISO	5Z	engr DLEGRAND 95.11.17
g F06-020(DLE) 060628	ISO 1992	ISO 406 ISO	5Z	engr P.NZZZ 95.11.17
sheet revision	sheet	sheet	sheet	sheet