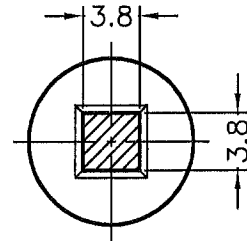
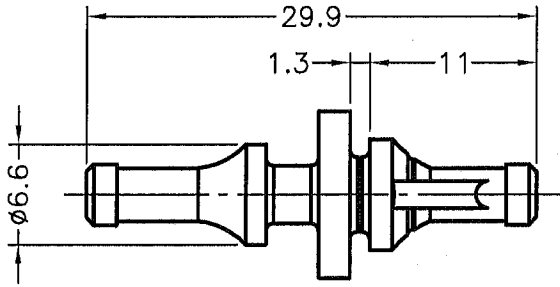
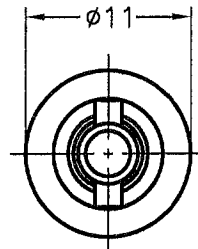
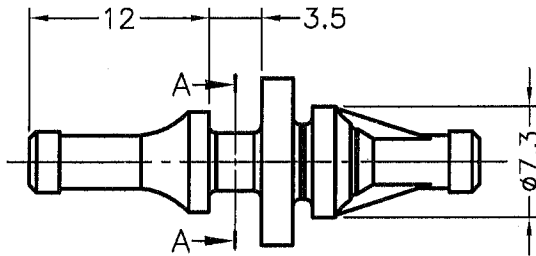


DIM.	TOL.
5mm DOWN	±0.2
5~20mm	±0.3
20~40mm	±0.4
40~60mm	±0.5
60~100mm	±0.8
100mm UP	±1.0

REVISIONS			
REV	DESCRIPTION	DATE	BY


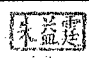
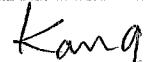


SECTION A-A



- ① FANS MOUNTING HOLE  $\phi 4.3^{+0.2}_{-0}$  mm AND 3 TO 5.5mm THICKNESS.
- ② SUPPORT MOUNTING HOLE  $\phi 5.0^{\pm 0.1}$  mm AND 1 TO 2mm THICKNESS.

NOTE: All measurement does not include gate which raises under 1.2mm.

 <p>康揚企業股份有限公司 KANG YANG HARDWARE ENTERPRISE CO., LTD. 康揚塑膠(東莞)有限公司 KANG YANG PLASTIC(DONG GUAN) CO., LTD. 康哲電腦配件(吳江)有限公司 KANG CHE COMPUTER COMPONENTS(WUJIANG) CO., LTD.</p>				TITLE	FAN SNAP RIVET	SPEC. DWG.	
				MATERIAL	TPE	DATE	2003.12.05
				HARDNESS		DRAWN	TIM
				COLOR	BLACK	CHECK	
PART NUMBER	DRAWING NUMBER		UNLESS OTHERWISE SPECIFIED TOLERANCE	APPROVED			
BUB-30G	BUB-30G		SEE ABOVE				
SIZE	SCALE	UNIT	REV				
A4	2:1	mm	A				