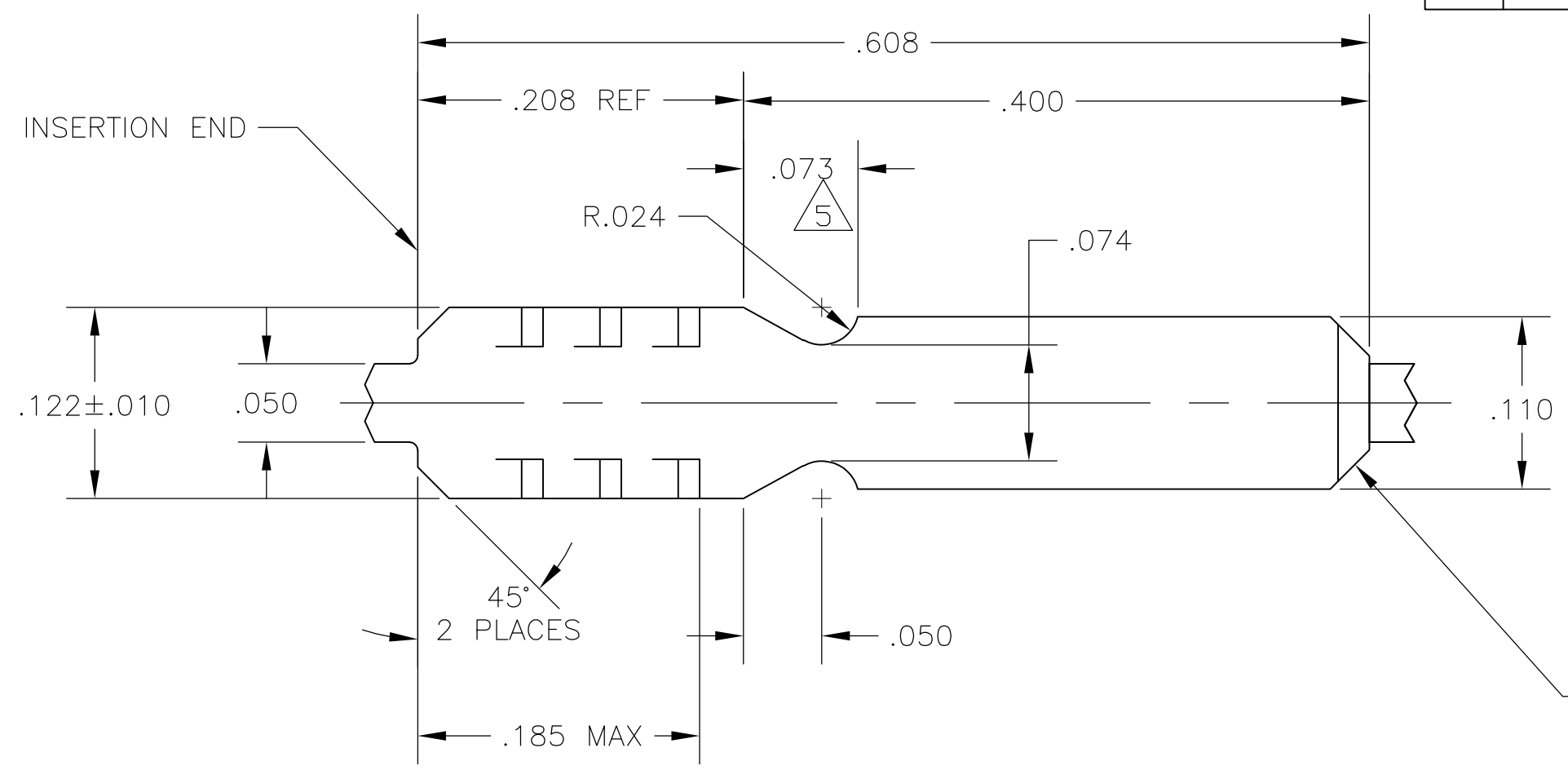
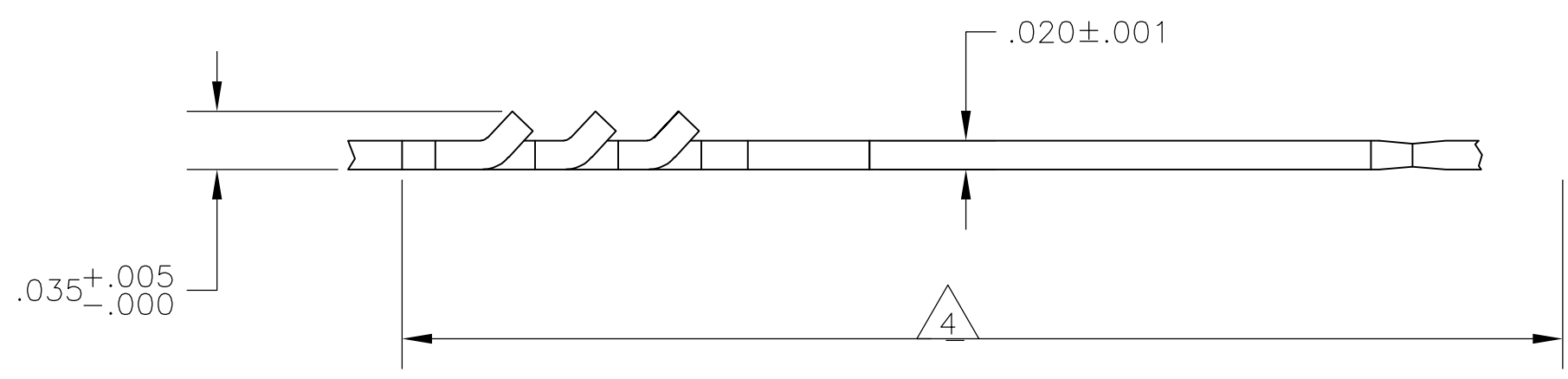


THIS DRAWING IS UNPUBLISHED. RELEASED FOR PUBLICATION  
 © COPYRIGHT BY TYCO ELECTRONICS CORPORATION. ALL RIGHTS RESERVED.

LOC	DIST	REVISIONS			
P	LTR	DESCRIPTION	DATE	DWN	APVD
	D	REVISED PER ECR-09-007435	3/26/09	SS	MS



- 1 CONTINUOUS STRIP ON REELS.
- 2 A MAXIMUM OF TWO (2) SPLICES PER REEL.
- 3 .000150 MIN PRE-TIN PLATE OVER .000100 MIN COPPER UNDERPLATE.
- 4 FEED OVER EIGHT (8) TERMINALS SHALL BE 5.360±.010.
- 5 NO BURR PERMISSIBLE IN TIE-OFF AREA.



63945-1  
 PART NUMBER

THIS DRAWING IS A CONTROLLED DOCUMENT.		DWN M.S. FEHER 03MAY2006	Tyco Electronics Corporation Harrisburg, PA 17105-3608													
DIMENSIONS: INCHES		CHK G.D. PORTA 03MAY2006	NAME BOBBIN TAB													
TOLERANCES UNLESS OTHERWISE SPECIFIED:		APVD G.D. PORTA 03MAY2006	PRODUCT SPEC -													
<table border="0"> <tr><td>0 PLC</td><td>± -</td></tr> <tr><td>1 PLC</td><td>± -</td></tr> <tr><td>2 PLC</td><td>± -</td></tr> <tr><td>3 PLC</td><td>± .005</td></tr> <tr><td>4 PLC</td><td>± -</td></tr> <tr><td>ANGLES</td><td>± 5°</td></tr> </table>		0 PLC	± -	1 PLC	± -	2 PLC	± -	3 PLC	± .005	4 PLC	± -	ANGLES	± 5°	APPLICATION SPEC -		RESTRICTED TO -
0 PLC	± -															
1 PLC	± -															
2 PLC	± -															
3 PLC	± .005															
4 PLC	± -															
ANGLES	± 5°															
MATERIAL H04 BRASS		FINISH -	WEIGHT -	SIZE A3	CAGE CODE 00779											
CUSTOMER DRAWING			DRAWING NO G-63945	SCALE 10:1	SHEET 1 OF 1											
			REV D													