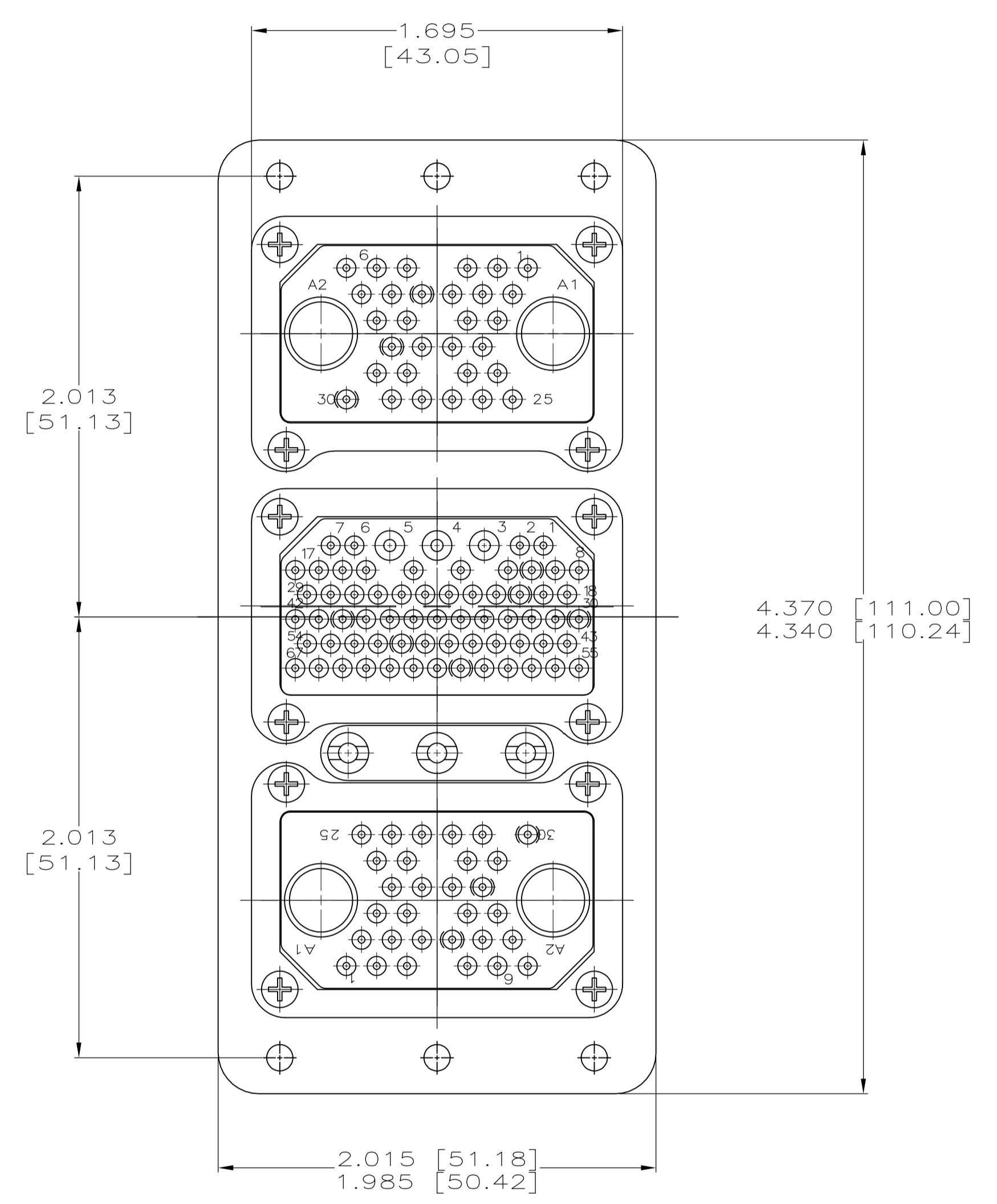
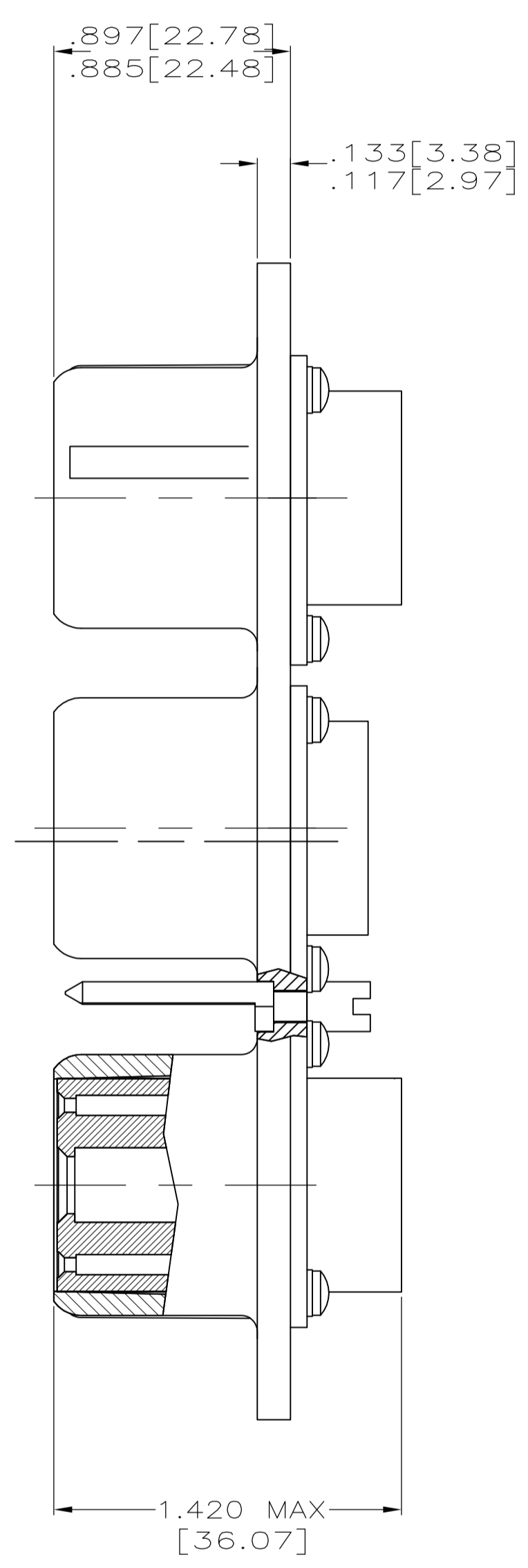
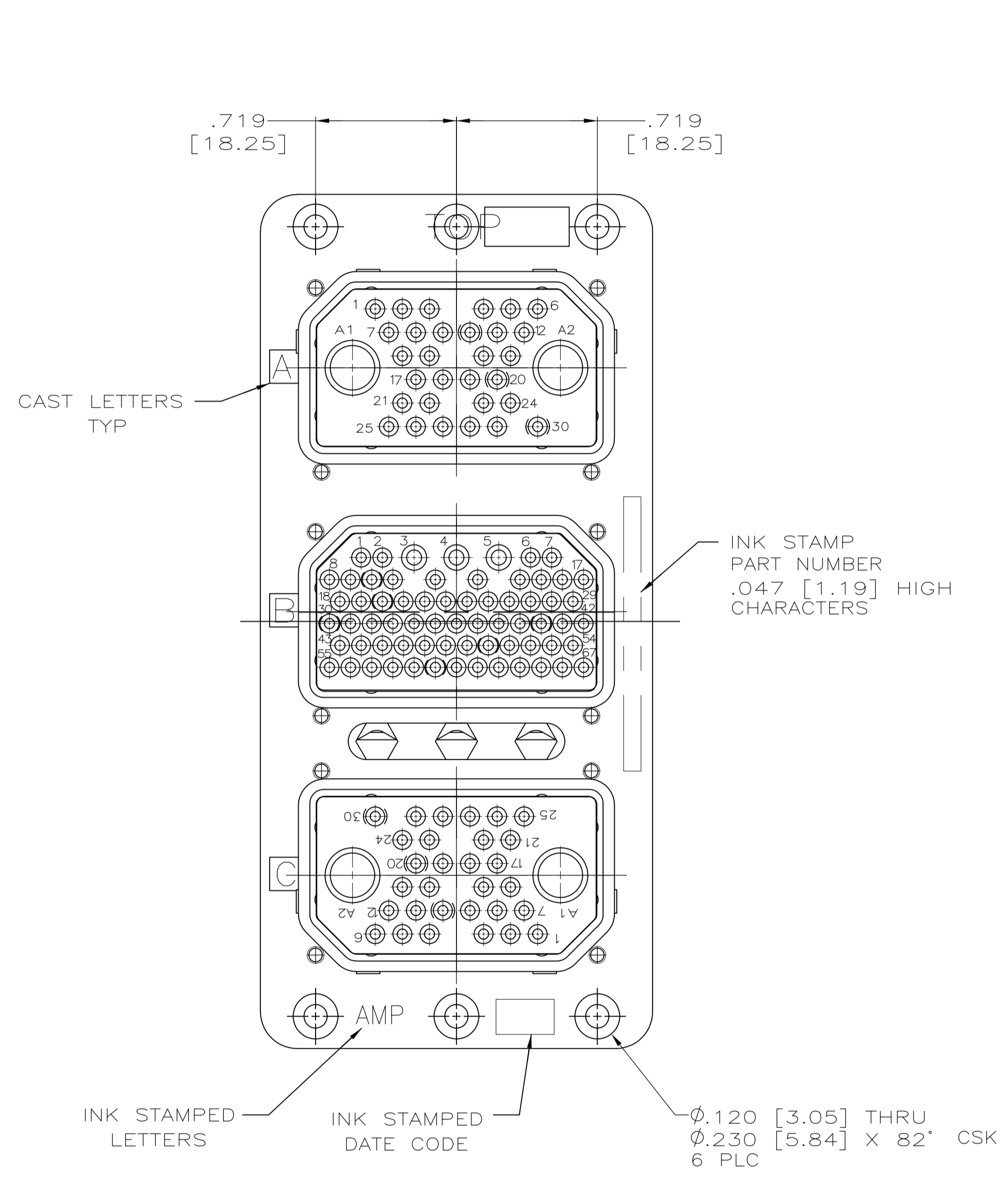


1. MATERIAL AND FINISH:
 SHELL: DIE CAST ALUMINUM ALLOY PER FED. SPEC QQ-A-591.
 STANDARD FINISH: CADMIUM PLATE PER QQ-P-416, TYPE 1,
 CLASS 2 YELLOW CHROMATE CONVERSION.
 INSERT RETENTION PLATE: ALUMINUM ALLOY, BLUE ANODIZE
 PER MIL-A-8625.
 SCREWS AND WASHERS: STAINLESS STEEL, PASSIVATED.
 POLARIZING POSTS: STAINLESS STEEL, PASSIVATED.
 POLARIZING NUTS: BRASS, CADMIUM PLATED.



THIS DRAWING IS A CONTROLLED DOCUMENT.		DIN T. THOMPSON 08JUL98 CHK R. GROSS 08JUL98 APPV R. GROSS 08JUL98	TE Connectivity	
DIMENSIONS: INCHES	TOLERANCES UNLESS OTHERWISE SPECIFIED: 0 PLC ± - 1 PLC ± - 2 PLC ± - 3 PLC ± - 4 PLC ± - ANGLES ± -	NAME RM3P32C2S67S32C2S-0001 (201) WITH COAX	SIZE A1 CAGE CODE 00779 DRAWING NO. 1218349	RESTRICTED TO
MATERIAL SEE CALLOUT	FINISH SEE CALLOUT	WEIGHT	SCALE 2:1	SHEET 1 OF 1
CUSTOMER DRAWING		REV A		