

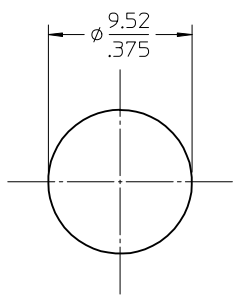
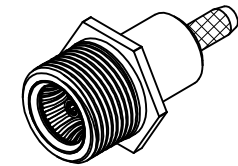
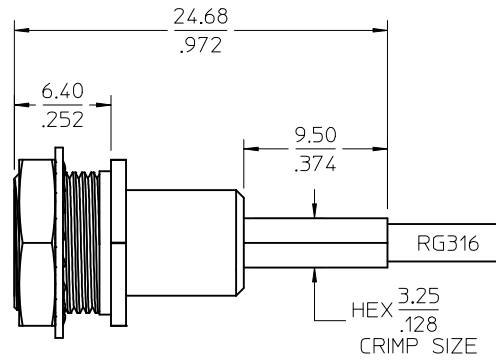
MATERIALS AND FINISHES

BODY, JAM NUT, CABLE CONTACT, CONTACT COVER,  
CRIMP TUBE: BRASS  
PLATED GOLD

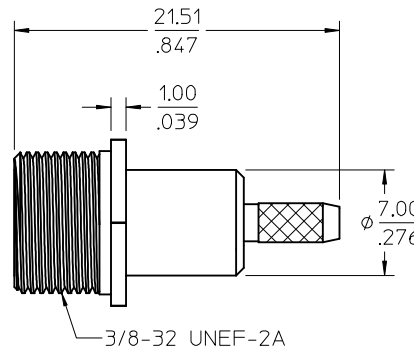
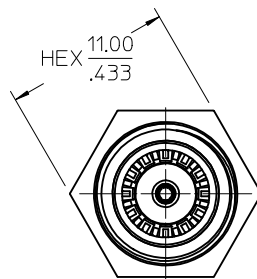
CENTER CONTACT, SPRING OUTER CONTACT: BERYLLIUM COPPER  
PLATED GOLD

LOCKWASHER: PHOSPHOR BRONZE  
PLATED GOLD

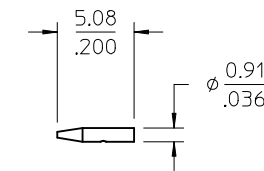
INSULATOR: TEFLON



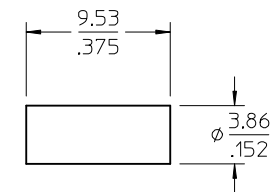
MATING HOLE DETAIL



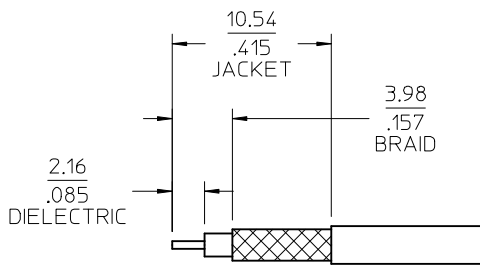
JAM NUT



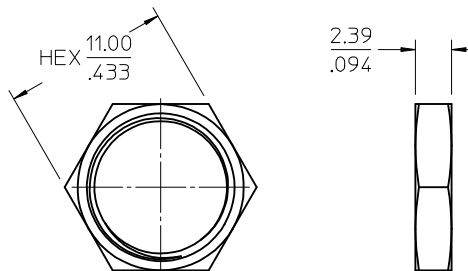
CABLE CONTACT



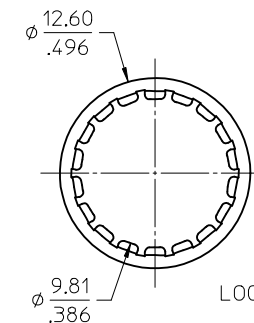
CRIMP TUBE



CABLE PREP DIMENSION



JAM NUT



LOCK WASHER

73298-0141	BULK
73298-0140	ONE PER BAG
PART NO	PACKAGING

PS-89675-1840	ELEC/MECH PERFORMANCE
MIL-STD-348A, FIG. 321.2	INTERFACE
SPECIFICATION	DESCRIPTION

CHG: UPDATED LOCK WASHER PER RF13-E063	EC NO: URF2013-0292	CHKD: DRWINRVEH	2012/11/21
APPR: HUANG	DESCRIPTION	2012/12/01	
A1			

QUALITY SYMBOLS	GENERAL TOLERANCES (UNLESS SPECIFIED)
▽=0	mm INCH
▽=0	4 PLACES ± --- ± ---
▽=0	3 PLACES ± --- ± ---
	2 PLACES ± --- ± ---
	1 PLACE ± --- ± ---
	0 PLACE ± --- ± ---
	ANGULAR ± 2 °
	DRAFT WHERE APPLICABLE MUST REMAIN WITHIN DIMENSIONS

DIMENSION STYLE MM/IN	
DRAWN BY	DATE
JYL	2008/07/16
CHECKED BY	DATE
SSS	2008/07/16
APPROVED BY	DATE
JWIENER	2011/09/27
MATERIAL NO.	
SEE TABLE	
SIZE	
C	

SCALE 4:1	DESIGN UNITS METRIC	THIRD ANGLE PROJECTION
TITLE		
BMA JACK, BH RG316		
EWR-3686, BMA-JC/F		
<b>molex</b>		
DOCUMENT NO.	SHEET NO.	
SD-73298-014	1 OF 1	
THIS DRAWING CONTAINS INFORMATION THAT IS PROPRIETARY TO MOLEX INCORPORATED AND SHOULD NOT BE USED WITHOUT WRITTEN PERMISSION		