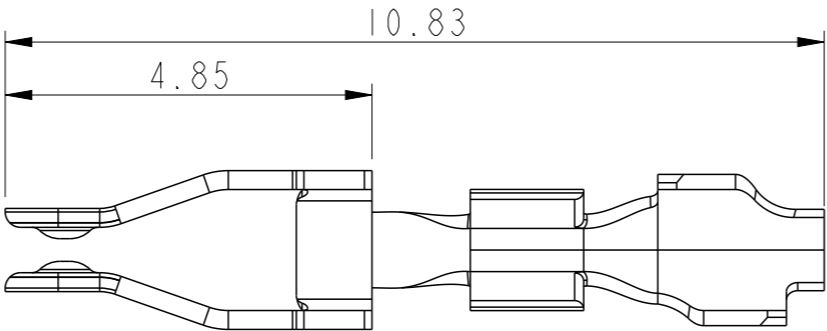


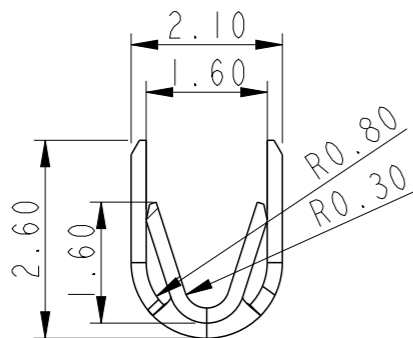
LOOSE PIECE	10120045-R01LF
ON STRIP	10120045-R02LF

NOTE: -

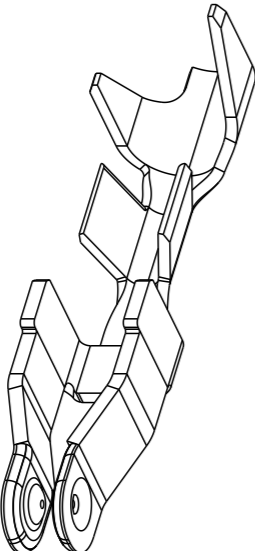
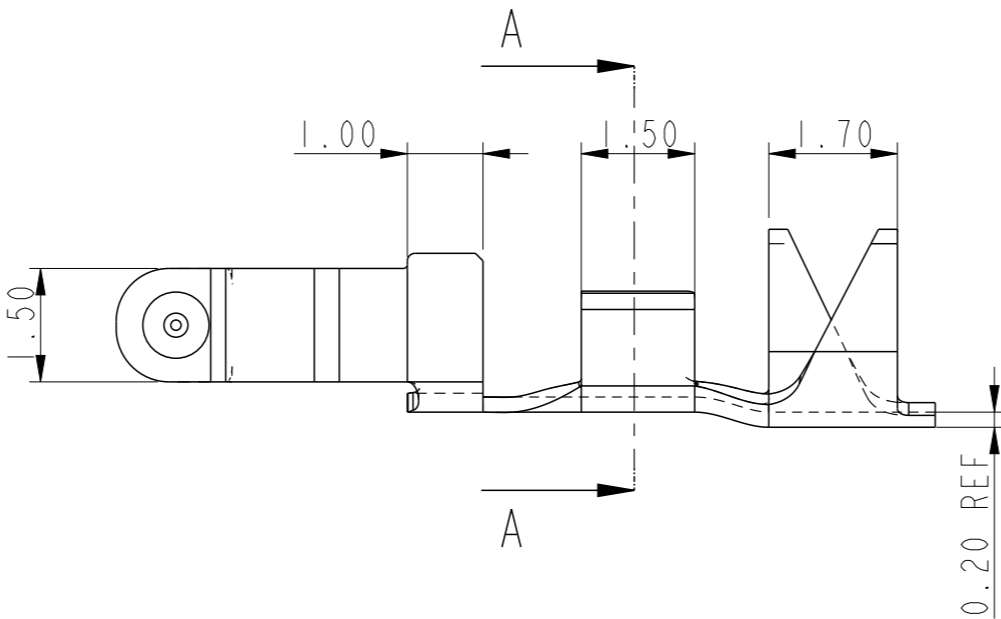
1. TERMINAL MATERIAL: COPPER ALLOY
2. PLATING FINISH:
AU/GXT OVER NICKEL IN CONTACT AREA
TIN OVER NICKEL IN TERMINAL AREA
3. LEAD FREE OR RoHS DIRECTIVE LABELING
TO BE PROVIDED AS PER GS-14-920
4. "LF" SUFFIX TO THE PRODUCT NUMBER FOR RoHS
COMPATIBLE/LEAD FREE VERSION
5. THIS PRODUCT MEETS EUROPEAN UNION
DIRECTIVES AND OTHER COUNTRY
REGULATIONS AS DESCRIBED IN GS-47-0004
6. WIRE RANGE: 22~30 AWG, STRANDED
7. MAX INSULATION DIA: 1.5
8. THIS PRODUCT HAS NOT COMPLETED VALIDATION TESTING



SCALE 10:1



SECTION A-A



SCALE 8:1

PRELIMINARY

spec ref	dr	Mathew Jacob	2015/03/30	projection	MM	size	A3	scale	10:1
tolerance std	eng	Mathew Jacob	2015/07/06			ecn no	-	rel level	Preliminary
ISO 406 ISO 1101	chr	-	-						
surface	linear	0.X	±0.20		CTW RECEPTACLE TERMINAL WIRE TO BOARD CONNECTOR	dwg no 10120045-R0X	rev 1	Product - Customer Drw	
		0.XX	±0.13					sheet 1 of 1	
ISO 1302	angular	0°	±2°					www.fci.com	cat. no.

Copyright FCI. FCI