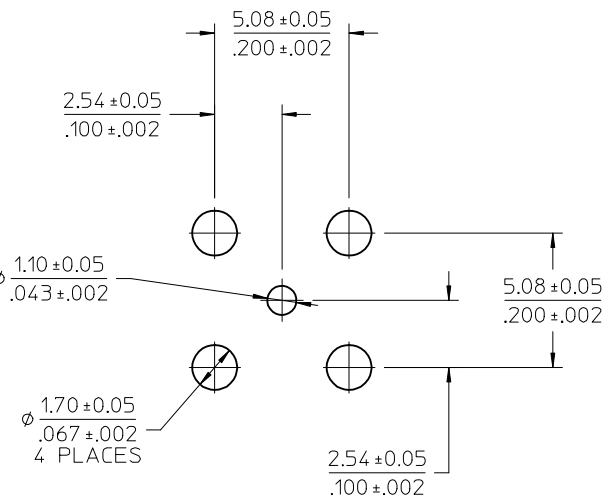
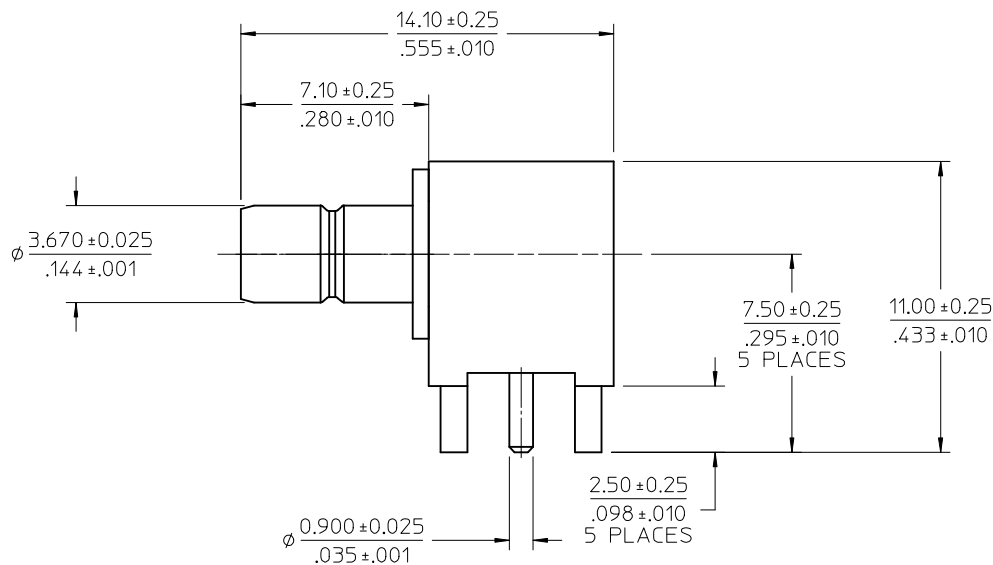
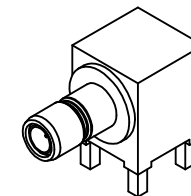


MATERIALS AND FINISHES

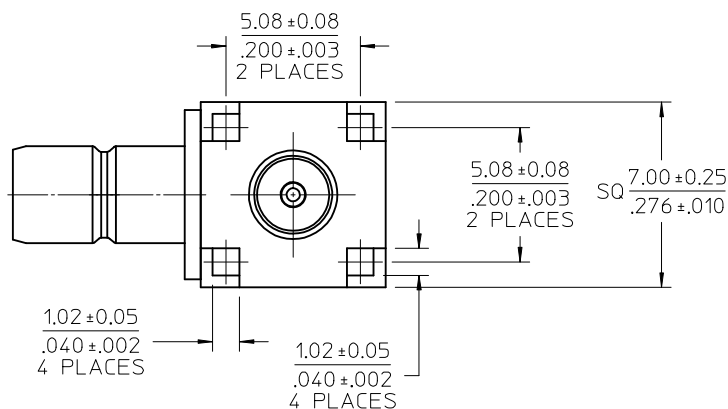
BODY, HOUSING BRASS
PLATED GOLD

CENTER CONTACT BRASS
PLATED GOLD

INSULATOR TEFLON



RECOMMENDED PCB HOLE



PART # 73404-6110

PS-89675-3540

PRODUCT SPECIFICATION

SPECIFICATION

DESCRIPTION

NEW RELEASED
(PDR0908357)

EC NO: URF-2010-0096
2009/08/24
DRWINELIN
CHKD: 2009/09/02
APPR: MHUANG
2009/09/03

REV	DESCRIPTION
A	

QUALITY SYMBOLS	GENERAL TOLERANCES (UNLESS SPECIFIED)
▽=0	
▽=0	
	mm INCH
4 PLACES	± --- ± ---
3 PLACES	± --- ± ---
2 PLACES	± --- ± ---
1 PLACE	± --- ± ---
	ANGULAR ± 2 °
	DRAFT WHERE APPLICABLE MUST REMAIN WITHIN DIMENSIONS

DIMENSION STYLE		DRAWN BY		DATE	
MM/IN		EVITA		2009/08/05	
		CHECKED BY		DATE	
		JUDY		2009/08/05	
		APPROVED BY		DATE	
		MISEN		2009/08/05	
		MATERIAL NO.		DOCUMENT NO.	
		734046110		SD-73404-611	
		SIZE		SHEET NO.	
		C		1 OF 1	

TITLE	THIRD ANGLE PROJECTION
SMB JACK, R/A, 50 OHMS PCB SMB-J/RA	
MOLEX INCORPORATED	