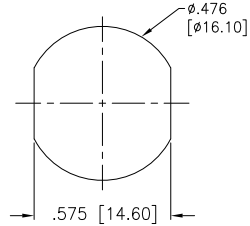
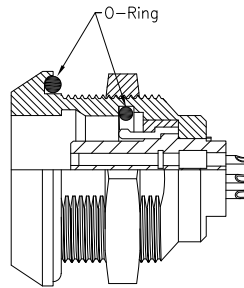
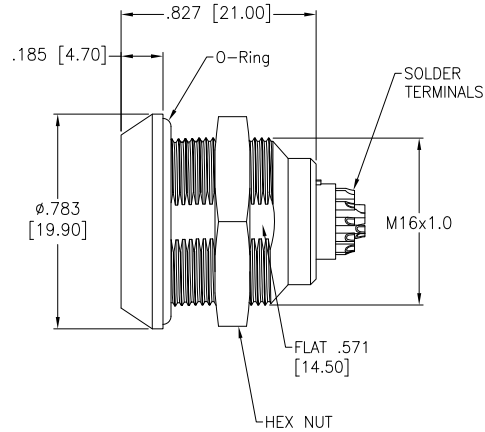
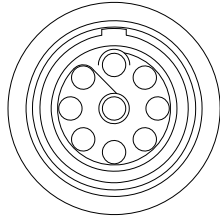


APPROVED: _____
 DATE: _____ TITLE: _____

Rev	AWO #	Description	Date	Appr
-		RELEASED	8/16/21	
A		UPDATED DRAWING	4/11/23	JJ/KC



Panel Cut-Out
(Front Panel Mounting)

Note: .354 [9.0] Max. Panel Thickness

MMI-M1RSGXXS-IP67

SIZE 1

ALIGNMENT KEY

G = 0°

OF POSITIONS

(02, 03, 04, 05, 06, 07, 10, 14 & 16)

ALIGNMENT KEY

0°



KEY G

	2 Pin	3 Pin	4 Pin	5 Pin	6 Pin	7 Pin	10 Pin	14 Pin	16 Pin
Configuration									
Diameter of Pin	Ø1.3	Ø1.3	Ø0.9	Ø0.9	Ø0.7	Ø0.7	Ø0.5	Ø0.5	Ø0.5
Testing Voltage	1350V	1300V	1350V	1150V	1050V	950V	900V	800V	800V
Working Voltage	300V	300V	250V	250V	200V	200V	200V	200V	200V
Rated Current / Pin	13A	10A	9A	8A	6A	6A	2A	1.5A	1.2A

SPECIFICATIONS:

Material:

Body: Brass, Natural Chrome Plated

Insulator: PPS, color Beige

Terminal: Brass, Gold Plated

O-Ring: Silicone

Electrical:

Voltage Rating: See chart

Current Rating: See chart

Dielectric withstanding voltage: See chart

Electrical Life: 1,000 Cycles min.

Mechanical:

Endurance: 5,000 Cycles Min.

Temperature Rating:

Operating temperature: -55°C to +150°C

Environmental:

IP67 Protection (Panel and Mated Condition)

Lead free, RoHS compliant



UNLESS OTHERWISE SPECIFIED ALL DIMENSIONS ARE INCHES [MM]. TOLERANCES: EXCEPT AS NOTED

INCHES	HOLE
.X ± .10	Ø.X ± .10
.XX ± .020	Ø.XX ± .015
.XXX ± .015	Ø.XXX ± .010

DRAWN	SS	8/16/21
CHECKED	SS	8/16/21
APPROVED		

THIS DRAWING CONTAINS INFORMATION THAT IS PROPRIETARY AND SHOULD NOT BE USED WITHOUT PRIOR WRITTEN PERMISSION FROM ADAM TECH



909 Rahway Avenue,
 Union, NJ 07083
 Phone: 908-687-5000
 Fax: 908-687-5710

TITLE
 PUSH-PULL SOCKET, VERTICAL, SIZE 1, METAL BODY,
 REAR PANEL MOUNT, SOLDER TERMINAL, IP67

SIZE X	PART NO. MMI-M1RSGXXS-IP67	REV. A
REF: S00210C	SCALE: NTS	SHEET 1 OF 1