

4

3

2

1

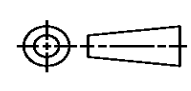
THIS DRAWING IS UNPUBLISHED. RELEASED FOR PUBLICATION
© COPYRIGHT ALL RIGHTS RESERVED.

LOC	DIST	REVISIONS			
P	LTR	DESCRIPTION	DATE	DWN	APVD
	E1	ECR-16-009824	28JUL2016	GK	SD

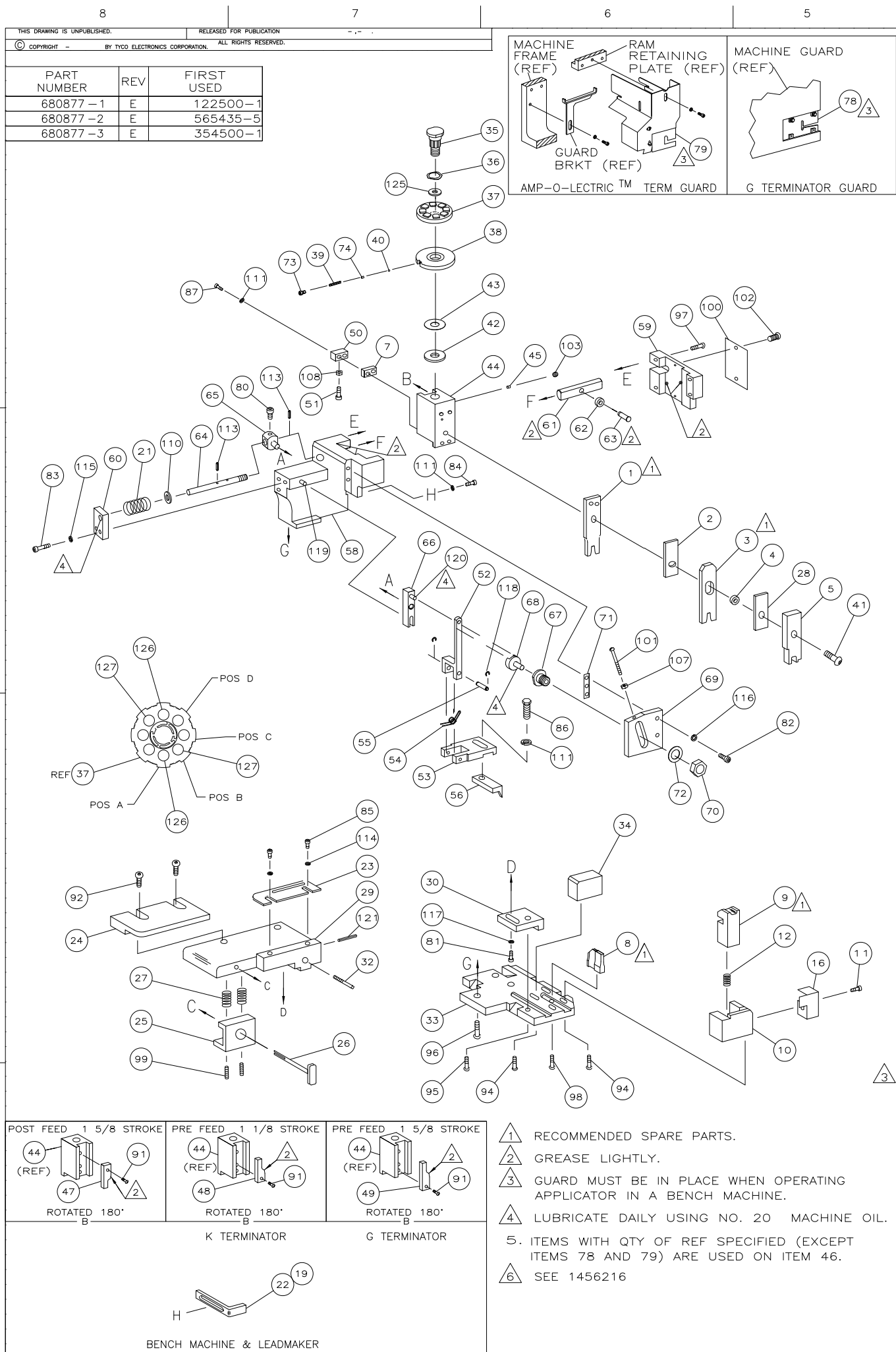
REPLACED BY OCEAN STYLE APPLICATOR PART NUMBER 2836316-1

FOR REPLACEMENT PARTS FOR APPLICATOR 680877 REFER TO ADDITIONAL PAGE(S). SPARE PARTS KIT (IF LISTED) WILL REMAIN AVAILABLE.

THE REPLACEMENT OCEAN STYLE APPLICATOR HAS THE SAME TERMINATOR/PRESS INTERFACE AS APPLICATOR 680877

THIS DRAWING IS A CONTROLLED DOCUMENT.		DWN	GOPALAKRISHNA HV		
DIMENSIONS:		CHK	GOPALAKRISHNA HV		
		TOLERANCES UNLESS OTHERWISE SPECIFIED:		APVD	
		0 PLC ± 1 PLC ± 2 PLC ± 3 PLC ± 4 PLC ± ANGLES ±		STOUGH DALE	
MATERIAL		PRODUCT SPEC		NAME	
FINISH		APPLICATION SPEC		SIDE FEED HDM APPLICATOR	
		WEIGHT	SIZE	CAGE CODE	DRAWING NO
			A3		©- 680877
		CUSTOMER DRAWING		SCALE	SHEET 1 OF 2 REV E1





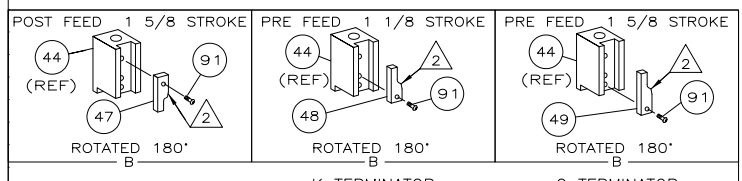
TERMINAL NAME: AUTOMOTIVE SOCKET CONTACT			
AMP P/N	MFG P/N	CRIMP DATA (NON-AMP TERMINAL-MFR SPEC)	
286835	1300263010	PAD LTR	CRIMP HEIGHT
1437284-9		A	.043 ±.002 [1.09 ±0.05mm]
		B	.039 ±.002 [1.0 ±0.05mm]
		C	NOT USED
		D	NOT USED
WIRE STRIP LENGTH	TERM APPL SPEC	FEED	APPL INSTRUCTION
.156-.187	NONE	.312	408-8040
			SET UP GAGE LAYOUT
			458637-1 L2284

QTY REQD PER ASSY	PART NO	DESCRIPTION	ITEM NO
1	1	1	129
2	2	2	128
2	2	2	127
1	1	1	126
1	1	1	125
1	1	1	124
1	1	1	123
1	1	1	122
1	1	1	121
REF	REF	REF	120
REF	REF	REF	119
REF	REF	REF	118
1	1	1	117
REF	REF	REF	116
2	2	2	115
REF	REF	REF	114
REF	REF	REF	113
4	4	4	112
REF	REF	REF	111
REF	REF	REF	110
			109
1	1	1	108
REF	REF	REF	107
			106
			105
			104
1	1	1	103
2	2	2	102
REF	REF	REF	101
1	1	1	100
2	2	2	99
REF	REF	REF	98
REF	REF	REF	97
REF	REF	REF	96
REF	REF	REF	95
4	4	4	94
			93
2	2	2	92
1	1	1	91
			90
			89
			88
2	2	2	87
1	1	1	86
2	2	2	85
1	1	1	84
REF	REF	REF	83
REF	REF	REF	82
1	1	1	81
REF	REF	REF	80
REF	REF	REF	79
REF	REF	REF	78
			77
			76
			75
1	1	1	74
1	1	1	73
REF	REF	REF	72
REF	REF	REF	71
-3	-2	-1	U/M

LOC		DST		REVISIONS			
A	66	P	LR	DESCRIPTION	DATE	OWN	APD
		E		ECR-07-010264	5-2007	MY	TE

REF	REF	REF	REF	REF	REF	REF	REF
22594-8							70
240628-1							69
240626-1							68
240633-1							67
455680-1							66
240629-1							65
240632-2							64
240659-3							63
240658-1							62
454398-2							61
454178-1							60
454220-1							59
454485-1							58

QTY REQD PER ASSY	PART NO	DESCRIPTION	ITEM NO
1	1	1	57
REF	REF	REF	56
REF	REF	REF	55
REF	REF	REF	54
REF	REF	REF	53
REF	REF	REF	52
1	1	1	51
1	1	1	50
1	1	1	49
1	1	1	48
1	1	1	47
1	1	1	46
1	1	1	45
1	1	1	44
1	1	1	43
1	1	1	42
1	1	1	41
1	1	1	40
1	1	1	39
1	1	1	38
1	1	1	37
1	1	1	36
1	1	1	35
1	1	1	34
REF	REF	REF	33
1	1	1	32
			31
REF	REF	REF	30
1	1	1	29
1	1	1	28
2	2	2	27
1	1	1	26
1	1	1	25
1	1	1	24
1	1	1	23
1	1	1	22
REF	REF	REF	21
			20
1	1	1	19
			18
			17
1	1	1	16
			15
			14
			13
1	1	1	12
1	1	1	11
1	1	1	10
1	1	1	9
1	1	1	8
1	1	1	7
			6
1	1	1	5
1	1	1	4
1	1	1	3
1	1	1	2
1	1	1	1



- 1 RECOMMENDED SPARE PARTS.
- 2 GREASE LIGHTLY.
- 3 GUARD MUST BE IN PLACE WHEN OPERATING APPLICATOR IN A BENCH MACHINE.
- 4 LUBRICATE DAILY USING NO. 20 MACHINE OIL.
- 5. ITEMS WITH QTY OF REF SPECIFIED (EXCEPT ITEMS 78 AND 79) ARE USED ON ITEM 46.
- 6. SEE 1456216

POST FEED 1 5/8 STROKE
 PRE FEED 1 1/8 STROKE
 PRE FEED 1 5/8 STROKE

ROTATED 180°
 ROTATED 180°
 ROTATED 180°

K TERMINATOR
 G TERMINATOR
 H BENCH MACHINE & LEADMAKER

QTY REQD PER ASSY	PART NO	DESCRIPTION	ITEM NO
1	1	1	74
1	1	1	73
REF	REF	REF	72
REF	REF	REF	71
-3	-2	-1	U/M

DIMENSIONS:		TOLERANCES UNLESS OTHERWISE SPECIFIED:	
INCHES		0 PLC	± .000
		1 PLC	± .001
		2 PLC	± .002
		3 PLC	± .003
		4 PLC	± .004
		ANGLES	± .001
		FINISH	