



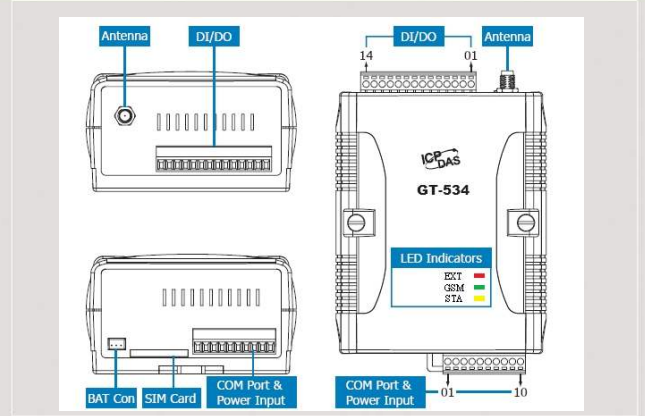
M2M Series Products



Intelligent SMS/GSM Alarm Controller



GT-534



Dimensions

The GT-534 is an intelligent SMS/GSM controller for industry applications with the simple commands and SMS tunnel function, and power can be input by the external power or Li-Battery. It supports UNICODE or 7 bit format for users to implement sending SMS messages with various languages. The GT-534 also provides the sound alarm application with the pre-defined voice files. In addition, the DTMF function of the GT-534 is for the applications with the keypad of phones to control the local I/O. And, With the SMS DBS software of ICP DSA, users can manage the GT-534 in PC centrally.

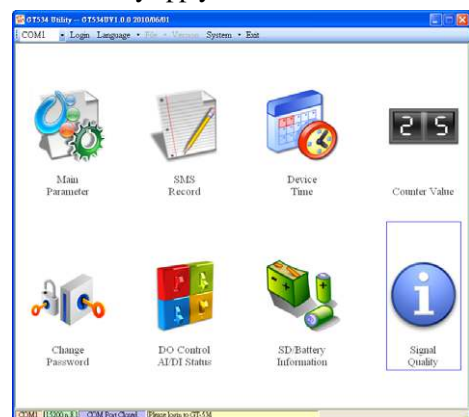
Features

- Support 850/900/1800/1900 MHz tri-band frequency
- Support SMS DBS software (http://m2m.icpdas.com/SMS_DBS.html)
- Reduces wasted traveling time responding to Alarm Events
- Send alarm SMS by DI trigger or exceed Counter preset limits
- Support simple command to send SMS via RS232
- Support DTMF application of the phone keypad
- Support Voice Alarm via a GSM Network
- Support Local I/O data logger
- Support SMS DBS software
- Local I/O linkage function to make the simple local control
- Support 3.7V 600 mA AH Li-battery

I/O	Channel number	Specification
AI	1	Resolution : 12-bit Input Range/Type : 0~20mA Sample Rate : 1 Hz Max

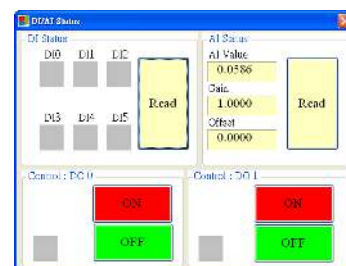
Utility

ICP DAS provide graphic tool for users to configure GT-534 via RS-232. The utility also can help users to test the GT-534 in the Lab before they apply in the real site.



I/O Interface

I/O	Channel number	Specification
DO	2	Output type : Isolation Load Voltage: +30V Max. Load Current : 100mA Max
DI	6	Input type : Sink or Source, Isolated channel with common power or ground On Voltage : +3.5V~+30V Off Voltage : +1V Max





Hardware Specifications

System	
CPU	32 bit, Microprocessor inside with 96MHz
RTC	Gives time(sec, min, hour) & date, leap year compensation from 1980 to 2079
WDT(watchdog)	Yes
SD interface	2GB max.
Comm. Interface	
COM ports	COM1: Tx,D,RxD,GND for configuration; COM2: RS-485;
GSM Interface	
CSD	Up to 14.4 kbps
Compliant to GSM Phase 2/2+	Class 4 (2 W @ 850/900 MHz); Class 1 (1 W @ 1800/1900 MHz)
Coding Schemes	CS 1, CS 2, CS 3, CS 4
SMS	MT, MO, CB, Text and PDU mode
General	
Power Requirement	2W; Unregulated +10V _{DC} ~ +30V _{DC} . Support 3.7V Li-battery backup
LEDs	3 indicator LEDs
Environment	
Operation Temp.	Operation : -25°C to 55°C ; Storage Temp : -40°C to 80°C
Humidity	5~95% non-condensing
Dimensions	91mm x 132mm x 52mm (long*width* high)

LED	Description			
EXT(red)	on	The external Power is active		
	off	The external Power is not active		
STA (orange)		Normal	GSM Fail	PIN code is wrong
	EXT (on)	Blanking (1 sec)	Always on or off	Blinking per 50 ms
GSM(green)	Blinking	Modem normal		
	off	Modem fail (or Blinking(not 3 sec))		

Applications



Ordering Information

GT-534 CR	Intelligent SMS/GSM Alarm Controller (RoHS)
------------------	---