



ON Semiconductor®

Automotive Dual 100W USB-PD User Guide



Table of Contents

STARTUP PROCEDURE 3

COLLATERAL VIEWING 7

ADVANCED CONTROL..... 8

USB-PD DUAL PORT 100W POWER MANAGEMENT 9

 Available Power Levels 9

 Available Voltages for each Power Level 9

 Fault Protection 9

 Thermal Fault Protection 9

 Thermal Foldback Protection 9

 Input Voltage Fault..... 9

INDIVIDUAL PORT CONTROLS 9

 Max Port Power 9

 Current limit 9

 Cable compensation..... 9

 Advertised Voltages 10

 Power Variables (Fusb302 class)..... 10

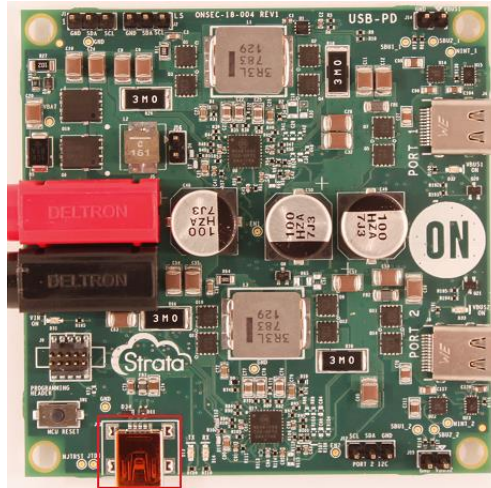
 Power Rules..... 10

Startup Procedure

Note: Must have 'Strata.exe' installed, as well as an active internet connection to download USB Serial Port drivers if necessary.

Step 1: Apply 5V to 32V to the input Banana Connectors.

- Recommend > 200W input capability for max output testing



Step 2: Open the 'Strata' application and press 'Continue'

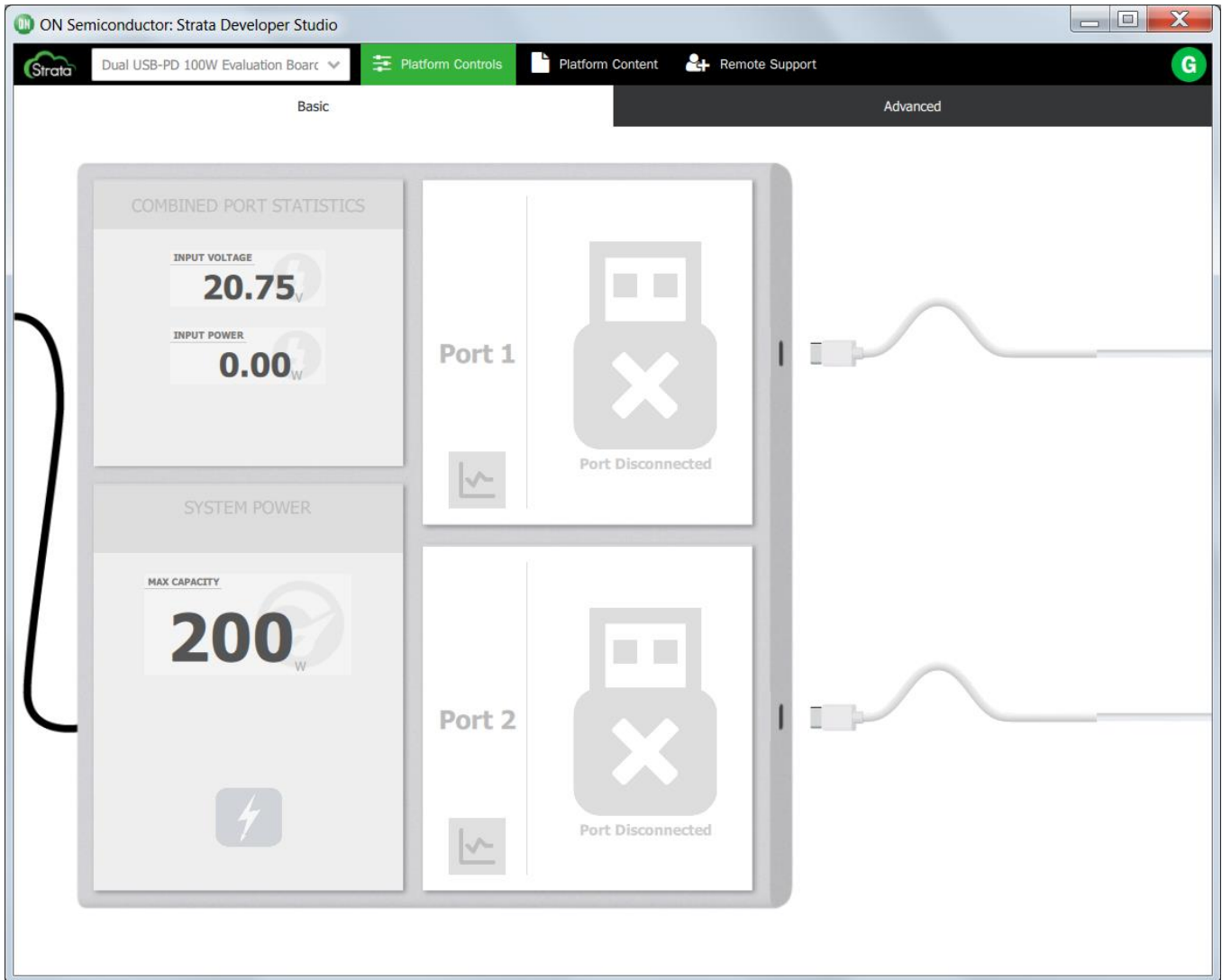


Step 3: Login to Strata as a Guest.



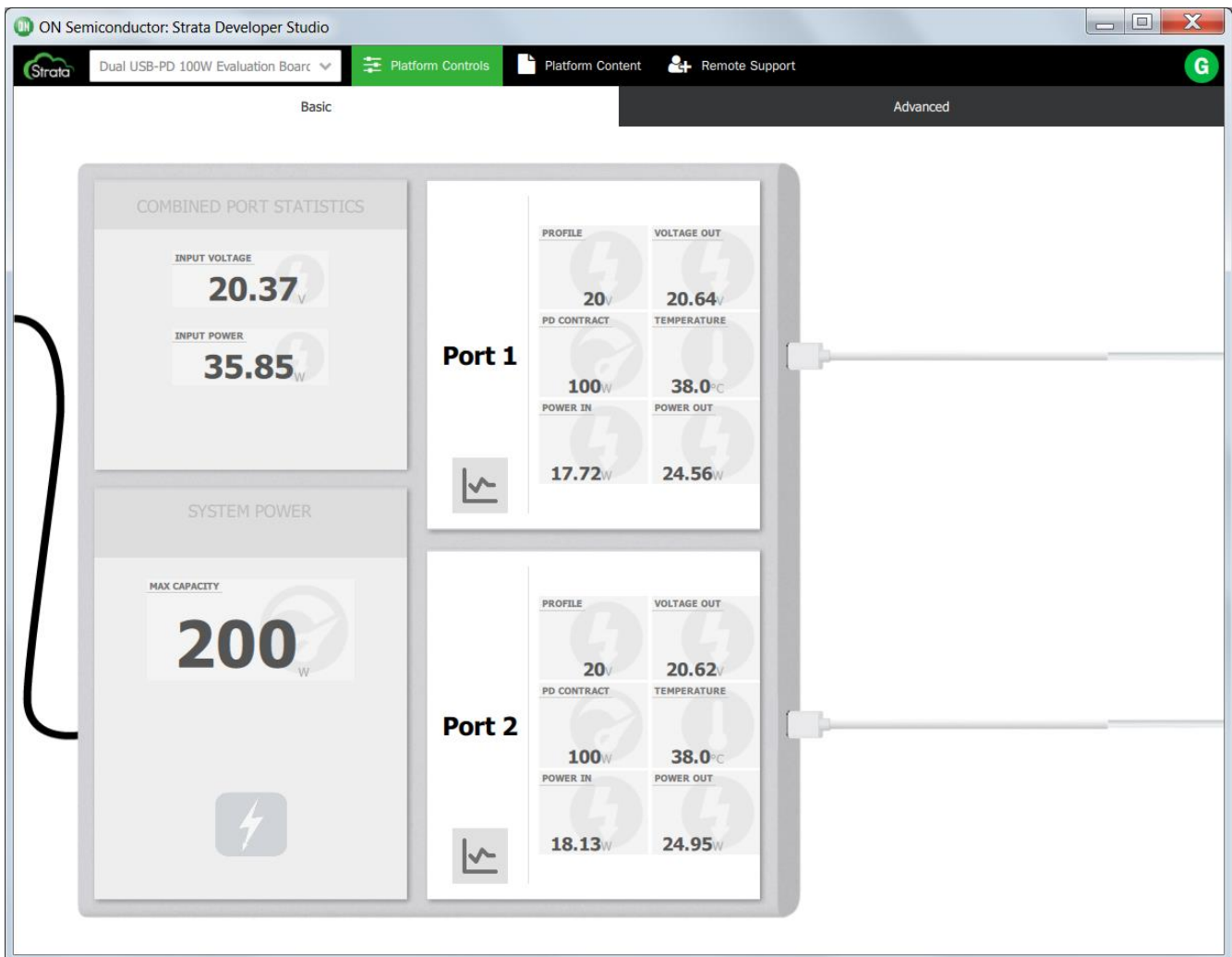
Step 4: Plug USB Mini-B into the EVK and PC.

- This should bring up the 'Basic' view within Strata



Step 5: Connect a USB-C device

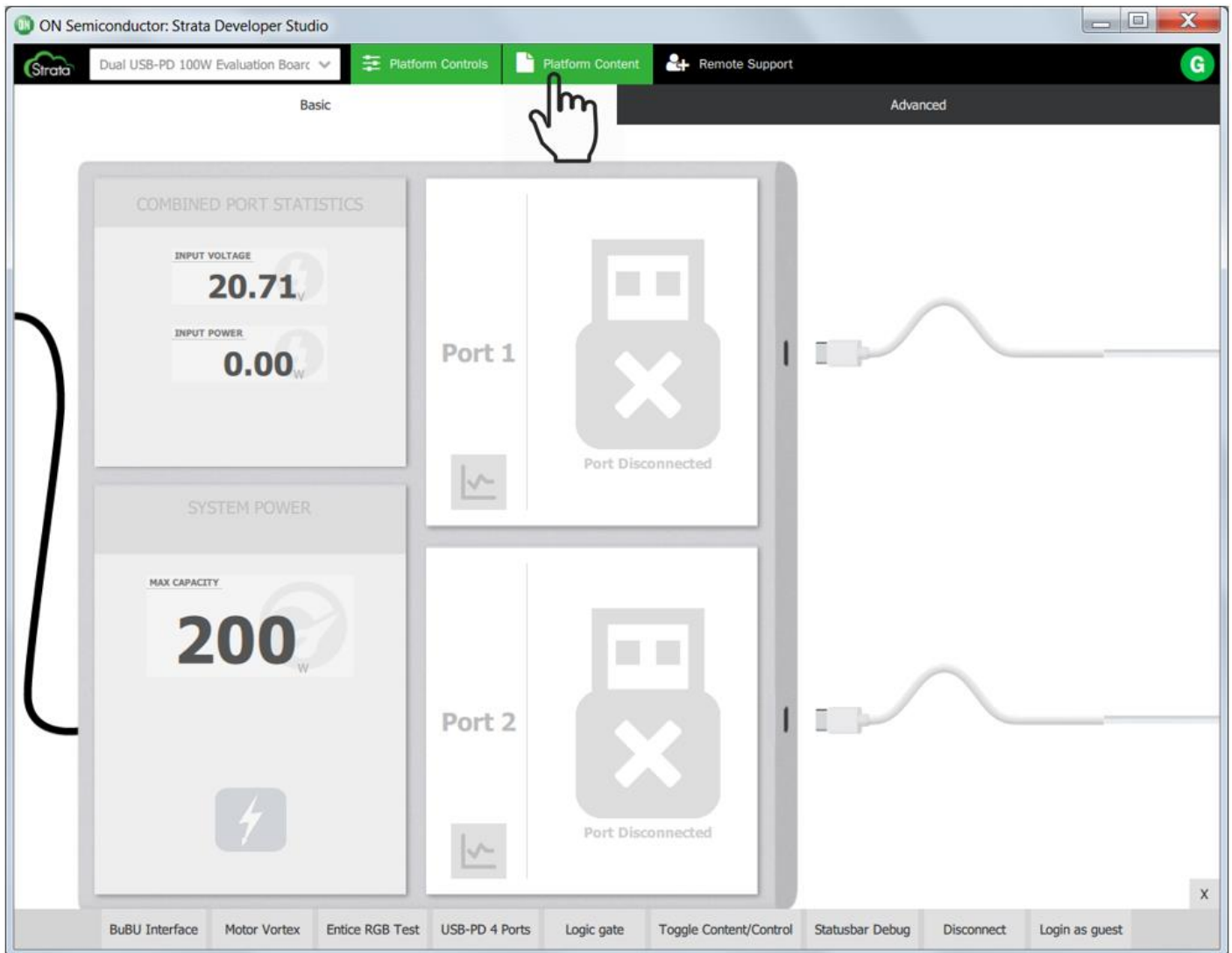
- There should be a connection within Strata on the corresponding port
- Strata will show the PD contract, voltage profile and actual output value, temperature, and input and output powers for each port.



Collateral Viewing

Click the “Platform Content” Button at the top of Strata to view system content.

Note: An internet connection is required to download platform content



Advanced Control

Provides advanced systems controls, telemetry and operation modes for in-depth evaluation of the system capabilities.

Click the ‘Advanced’ button to bring up the Advanced Control Interface. See explanation of ‘Protection’ features, below.

The screenshot displays the ON Semiconductor Strata Developer Studio interface for a Dual USB-PD 100W Evaluation Board. The interface is split into 'Basic' and 'Advanced' tabs, with the 'Advanced' tab selected. The 'System Settings' section includes 'Faults' (with 'Shutdown' selected for protection and '0' for input fault limit), 'Input Foldback' (set to 5V limit below and 45W power limit), and 'Temperature Foldback' (set to 1.50 limit above and 45W power limit). The 'Port 1' section shows a 20V profile, 100W PD contract, 23.83W input power, and 23.30W output power. It also features 'Advertised Voltages' (5V-20V), 'Show Graphs' (Vout, Iout, Iin, Pout, Pin), 'Max Power Output' (100W), 'Current limit' (6A), and 'Cable Compensation' (0.3). The 'Port 2' section shows a 20V profile, 100W PD contract, 16.95W input power, and 23.51W output power, with similar settings for advertised voltages, graphs, max power output, current limit, and cable compensation. A 'DEBUG' button is visible in the bottom right of the Port 2 section.

USB-PD Dual Port 100W Power Management

Available Power Levels

- 100W if a 5A capable cable is attached
- 60W if a standard type-C cable is attached (3A max)
- May be limited by user adjustable thresholds/limits
 - Host/user power limit setting
 - Over temperature
 - Input under voltage
 - Output over current conditions (foldback)

Available Voltages for each Power Level

These voltages and currents are offered to the sink device via the *Source Capabilities* message.

100W = 5V, 7V, 8V, 9V, 12V, 15V or 20V @ 5A

60W = 5V, 7V, 8V, 9V, 12V, 15V or 20V @ 3A

45W = 5V, 7V, 8V, 9V, 12V or 15V @ 3A

36W = 5V, 7V, 8V, 9V or 12V @ 3A

27W = 5V, 7V, 8V or 9V @ 3A

15W = 5V @ 3A

Fault Protection

Retry will cause the board to start back up once the fault is removed. **None** will disable the fault and no action will occur when the temperature threshold is met. This button affects **Thermal Fault** and individual port **Current Limit**.

Thermal Fault Protection

The first fault control will determine how the board will respond to an over-temperature condition.

Note: The UI fault protection is based on the readings from each port's temperature sensors. Individual parts may have their own over temperature protection. Hysteresis exists on this setting of 2°C.

Thermal Foldback Protection

Thermal Foldback Protection is used to force a port to renegotiate the PD contract with the sink device to the % power of that port's total available power. Hysteresis exists on this setting of 2°C.

Input Voltage Fault

No controls are available to the user for this fault. If AC power is removed from the board (or 24V is no longer present on the main DC rail) the board will shut down until mains is reapplied. Hysteresis exists on this setting of 0.5V that is unobservable to the user.

Individual Port Controls

Max Port Power

The port power of each port can be artificially limited by selecting an option in the drop down box. Once this is set, no contract will be offered on that port that exceeds the chosen max port power limit.

Current limit

The port current limit can be set in Strata to trigger from 0A to 6A. When tripped, the buck controller will be disabled and will hiccup in an attempt to restart until the current limit is increased or the requested current by the sink device decreases to an acceptable value. In addition to the software current limit, there is a hardware 6A current limit that exists due to the FPF2895 load switch.

Cable compensation

The cable compensation feature is intended to reduce voltage droop at the sink device when sourcing higher currents. Cable compensation is set on default to increase the output voltage by 50mV per increment of 0.5A. The maximum voltage that can be added onto the expected VBUS voltage is 1V (50mV for each increment of 0.25A).

Warning: It is possible to exceed the voltage of downstream devices by reducing the current slider and increasing the voltage slider. Care must be taken by the user to ensure the voltage does not violate the specifications of the downstream device.

Advertised Voltages

At the bottom of each port's controls there are a number of boxes showing voltage and current. These default to 20W, 3A maximum until a device is plugged in. Once a device is plugged in, the maximum contract will be what the device requested.

Power Variables (Fusb302 class)

- *m_commanded_max_power* – the maximum power set by the host
 - configured via 'Pmax' on the Advanced Controls tab
- *m_default_max_power* – the maximum power setting unconstrained by foldback settings
 - Default Limited to 60W if a 3 amp cable is attached, or 100W if a 5 amp cable is attached.
- *m_current_max_power* – the current maximum power setting constrained by cable-type, foldback, or overcurrent settings.
- *m_cable_max_current* – the maximum current in amps allowed by the cable type

Power Rules

$m_commanded_max_power \geq m_default_max_power \geq m_current_max_power$

When '*m_current_max_power*' changes, a USB-PD negotiation is performed between the USB-PD-100W board and the attached sink device.

References

1. Universal Serial Bus Power Delivery Specification, Revision 3.0
2. Universal Serial Bus 3.2 Specification

ON Semiconductor and are trademarks of Semiconductor Components Industries, LLC dba ON Semiconductor or its subsidiaries in the United States and/or other countries. ON Semiconductor owns the rights to a number of patents, trademarks, copyrights, trade secrets, and other intellectual property. A listing of ON Semiconductor's product/patent coverage may be accessed at <https://www.onsemi.com/site/pdf/Patent-Marking.pdf>. ON Semiconductor reserves the right to make changes without further notice to any products herein. ON Semiconductor makes no warranty, representation or guarantee regarding the suitability of its products for any particular purpose, nor does ON Semiconductor assume any liability arising out of the application or use of any product or circuit, and specifically disclaims any and all liability, including without limitation special, consequential or incidental damages. Buyer is responsible for its products and applications using ON Semiconductor products, including compliance with all laws, regulations and safety requirements or standards, regardless of any support or applications information provided by ON Semiconductor. "Typical" parameters which may be provided in ON Semiconductor data sheets and/or specifications can and do vary in different applications and actual performance may vary over time. All operating parameters, including "Typicals" must be validated for each customer application by customer's technical experts. ON Semiconductor does not convey any license under its patent rights nor the rights of others. ON Semiconductor products are not designed, intended, or authorized for use as a critical component in life support systems or any FDA Class 3 medical devices or medical devices with a same or similar classification in a foreign jurisdiction or any devices intended for implantation in the human body. Should Buyer purchase or use ON Semiconductor products for any such unintended or unauthorized application, Buyer shall indemnify and hold ON Semiconductor and its officers, employees, subsidiaries, affiliates, and distributors harmless against all claims, costs, damages, and expenses, and reasonable attorney fees arising out of, directly or indirectly, any claim of personal injury or death associated with such unintended or unauthorized use, even if such claim alleges that ON Semiconductor was negligent regarding the design or manufacture of the part. ON Semiconductor is an Equal Opportunity/Affirmative Action Employer. This literature is subject to all applicable copyright laws and is not for resale in any manner.

PUBLICATION ORDERING INFORMATION

LITERATURE FULLFILLMENT:

Literature Distribution Center for ON Semiconductor 19521 E. 32nd Pkwy, Aurora, Colorado 80011 USA

Phone: 303-675-2175 or 800-344-3860 Toll Free USA/Canada
 Fax: 303-675-2176 or 800-344-3867 Toll Free USA/Canada
 Email: orderlit@onsemi.com

N. American Technical Support:

800-282-9855 Toll Free USA/Canada

Europe, Middle East and Africa Technical Support:

Phone: 421 33 790 2910

ON Semiconductor Website: <https://www.onsemi.com/>

Order Literature:

<https://www.onsemi.com/orderlit>

For additional information, please contact your local Sales Representative

ON Semiconductor and the ON Semiconductor logo are trademarks of Semiconductor Components Industries, LLC dba ON Semiconductor or its subsidiaries in the United States and/or other countries. ON Semiconductor owns the rights to a number of patents, trademarks, copyrights, trade secrets, and other intellectual property. A listing of ON Semiconductor's product/patent coverage may be accessed at www.onsemi.com/site/pdf/Patent-Marking.pdf. ON Semiconductor is an Equal Opportunity/Affirmative Action Employer. This literature is subject to all applicable copyright laws and is not for resale in any manner.

The evaluation board/kit (research and development board/kit) (hereinafter the "board") is not a finished product and is as such not available for sale to consumers. The board is only intended for research, development, demonstration and evaluation purposes and should as such only be used in laboratory/development areas by persons with an engineering/technical training and familiar with the risks associated with handling electrical/mechanical components, systems and subsystems. This person assumes full responsibility/liability for proper and safe handling. Any other use, resale or redistribution for any other purpose is strictly prohibited.

The board is delivered "AS IS" and without warranty of any kind including, but not limited to, that the board is production-worthy, that the functions contained in the board will meet your requirements, or that the operation of the board will be uninterrupted or error free. ON Semiconductor expressly disclaims all warranties, express, implied or otherwise, including without limitation, warranties of fitness for a particular purpose and non-infringement of intellectual property rights.

ON Semiconductor reserves the right to make changes without further notice to any board.

You are responsible for determining whether the board will be suitable for your intended use or application or will achieve your intended results. Prior to using or distributing any systems that have been evaluated, designed or tested using the board, you agree to test and validate your design to confirm the functionality for your application. Any technical, applications or design information or advice, quality characterization, reliability data or other services provided by ON Semiconductor shall not constitute any representation or warranty by ON Semiconductor, and no additional obligations or liabilities shall arise from ON Semiconductor having provided such information or services.

The boards are not designed, intended, or authorized for use in life support systems, or any FDA Class 3 medical devices or medical devices with a similar or equivalent classification in a foreign jurisdiction, or any devices intended for implantation in the human body. Should you purchase or use the board for any such unintended or unauthorized application, you shall indemnify and hold ON Semiconductor and its officers, employees, subsidiaries, affiliates, and distributors harmless against all claims, costs, damages, and expenses, and reasonable attorney fees arising out of, directly or indirectly, any claim of personal injury or death associated with such unintended or unauthorized use, even if such claim alleges that ON Semiconductor was negligent regarding the design or manufacture of the board.

This evaluation board/kit does not fall within the scope of the European Union directives regarding electromagnetic compatibility, restricted substances (RoHS), recycling (WEEE), FCC, CE or UL, and may not meet the technical requirements of these or other related directives.

FCC WARNING – This evaluation board/kit is intended for use for engineering development, demonstration, or evaluation purposes only and is not considered by ON Semiconductor to be a finished end product fit for general consumer use. It may generate, use, or radiate radio frequency energy and has not been tested for compliance with the limits of computing devices pursuant to part 15 of FCC rules, which are designed to provide reasonable protection against radio frequency interference. Operation of this equipment may cause interference with radio communications, in which case the user shall be responsible, at its expense, to take whatever measures may be required to correct this interference.

ON Semiconductor does not convey any license under its patent rights nor the rights of others.

LIMITATIONS OF LIABILITY: ON Semiconductor shall not be liable for any special, consequential, incidental, indirect or punitive damages, including, but not limited to the costs of requalification, delay, loss of profits or goodwill, arising out of or in connection with the board, even if ON Semiconductor is advised of the possibility of such damages. In no event shall ON Semiconductor's aggregate liability from any obligation arising out of or in connection with the board, under any theory of liability, exceed the purchase price paid for the board, if any.

PUBLICATION ORDERING INFORMATION

LITERATURE FULLFILLMENT:

Literature Distribution Center for ON Semiconductor 19521 E. 32nd Pkwy, Aurora, Colorado 80011 USA

Phone: 303-675-2175 or 800-344-3860 Toll Free USA/Canada

Fax: 303-675-2176 or 800-344-3867 Toll Free USA/Canada

Email: orderlit@onsemi.com

N. American Technical Support:

800-282-9855 Toll Free USA/Canada

Europe, Middle East and Africa Technical Support:

Phone: 421 33 790 2910

ON Semiconductor Website: <https://www.onsemi.com/>

Order Literature:

<https://www.onsemi.com/orderlit>

For additional information, please contact your local Sales Representative

ON Semiconductor and are trademarks of Semiconductor Components Industries, LLC dba ON Semiconductor or its subsidiaries in the United States and/or other countries. ON Semiconductor owns the rights to a number of patents, trademarks, copyrights, trade secrets, and other intellectual property. A listing of ON Semiconductor's product/patent coverage may be accessed at <https://www.onsemi.com/site/pdf/Patent-Marking.pdf>. ON Semiconductor reserves the right to make changes without further notice to any products herein. ON Semiconductor makes no warranty, representation or guarantee regarding the suitability of its products for any particular purpose, nor does ON Semiconductor assume any liability arising out of the application or use of any product or circuit, and specifically disclaims any and all liability, including without limitation special, consequential or incidental damages. Buyer is responsible for its products and applications using ON Semiconductor products, including compliance with all laws, regulations and safety requirements or standards, regardless of any support or applications information provided by ON Semiconductor. "Typical" parameters which may be provided in ON Semiconductor data sheets and/or specifications can and do vary in different applications and actual performance may vary over time. All operating parameters, including "Typicals" must be validated for each customer application by customer's technical experts. ON Semiconductor does not convey any license under its patent rights nor the rights of others. If the product is to be used as a critical component in life support systems, or any FDA Class 3 medical devices or medical devices with a similar or equivalent classification in a foreign jurisdiction, or any devices intended for implantation in the human body, sale is subject to ON Semiconductor's advance written authorization for product use and a separate indemnification agreement signed by Buyer. ON Semiconductor is an Equal Opportunity/Affirmative Action Employer. This literature is subject to all applicable copyright laws and is not for resale in any manner.

PUBLICATION ORDERING INFORMATION

LITERATURE FULLFILLMENT:

Literature Distribution Center for ON Semiconductor 19521 E. 32nd Pkwy, Aurora, Colorado 80011 USA

Phone: 303-675-2175 or 800-344-3860 Toll Free USA/Canada
Fax: 303-675-2176 or 800-344-3867 Toll Free USA/Canada
Email: orderlit@onsemi.com

N. American Technical Support:

800-282-9855 Toll Free USA/Canada

Europe, Middle East and Africa Technical Support:

Phone: 421 33 790 2910

ON Semiconductor Website: <https://www.onsemi.com/>

Order Literature:

<https://www.onsemi.com/orderlit>

For additional information, please contact your local Sales Representative