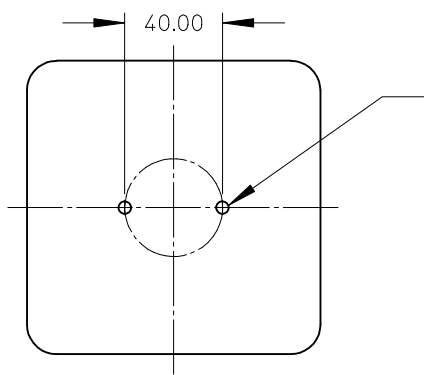
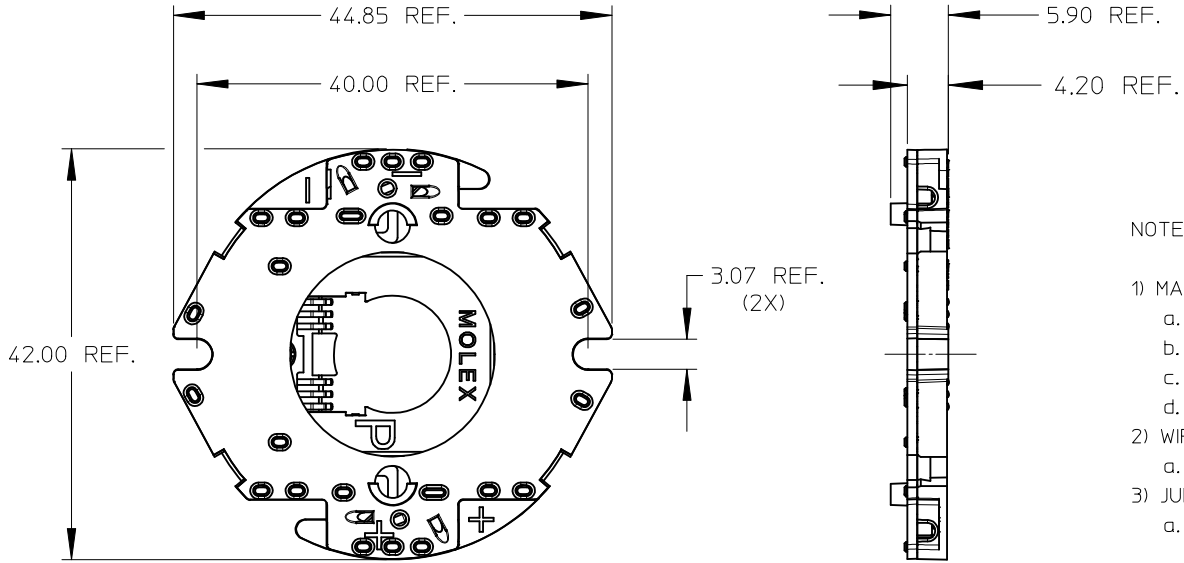
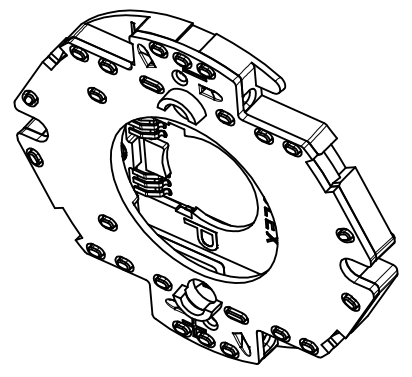


PART NUMBER	DESCRIPTION	SHEET
180160-000	HOLDER WITHOUT LENS - WIRED IN PARALLEL	2
180160-0001	HOLDER WITH SNAP-ON LENS - WIRED IN PARALLEL	2
180160-0002	HOLDER WITHOUT LENS - WIRED IN SERIES	3
180160-0003	HOLDER WITH SNAP-ON LENS - WIRED IN SERIES	3
N/A	REFLECTOR OPTION	4



M3 TAPPED HOLES (2)  
TORQUE SCREWS 0.8 NEWTON METERS MAX.

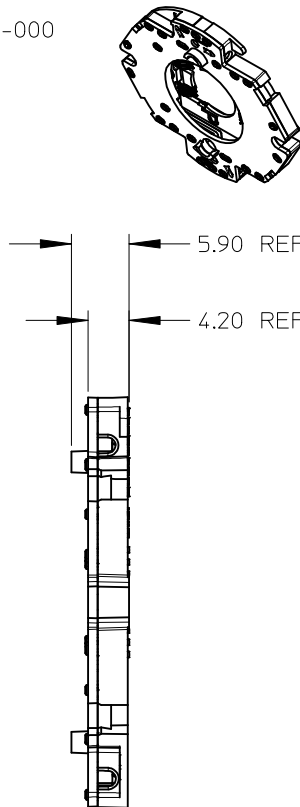
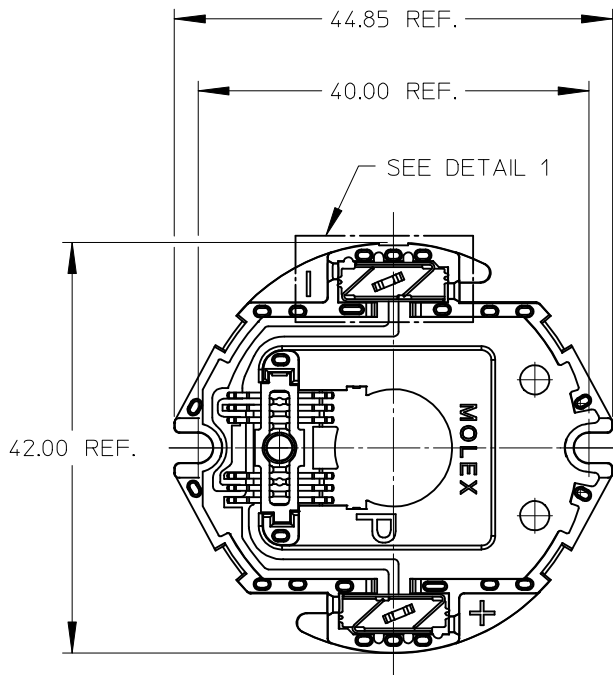
NOTES:

- 1) MATERIALS:
  - a. HOUSING: BLACK COLOR LCP 40% MINERAL FILLED UL94V-2
  - b. COVER: BLACK COLOR PA66 NYLON 25% GF UL94V-0
  - c. SNAP ON LENS/COVER: CLEAR PC POLYCARBONATE UF UL94HB
  - d. JUMPER: NATURAL COLOR PBT POLYESTER 30% GF UL94V-0
- 2) WIRE TRAP TERMINALS: COPPER ALLOY
  - a. FINISH: 2.50 MICRONS (100μ in.) OF TIN OVER 1.25 MICRONS (50μ in.) OF NICKEL
- 3) JUMPER TERMINALS: PHOSPHOR BRONZE
  - a. FINISH 0.25-0.50 MICRONS (10-20μ in.) SELECTIVE HARD GOLD IN CONTACT AREA  
1.25-2.50 MICRONS (50-100μ in.) NICKEL ALL OVER
- 4) THIS PRODUCT IS ELV AND ROHS COMPLIANT
- 5) APPLICABLE WIRE GAUGE - 18 OR 20 AWG
  - a. SOLID WIRE IS RECOMMENDED
  - b. IF STRANDED WIRE IS USED, PRE-TINNED IS RECOMMENDED
  - c. 1 cm STRIP LENGTH IS RECOMMENDED.
- 6) MOUNT HOLDER USING M3 OR 4-40 SCREWS (2), 0.8 NEWTON METERS MAX TORQUE

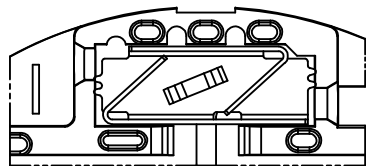
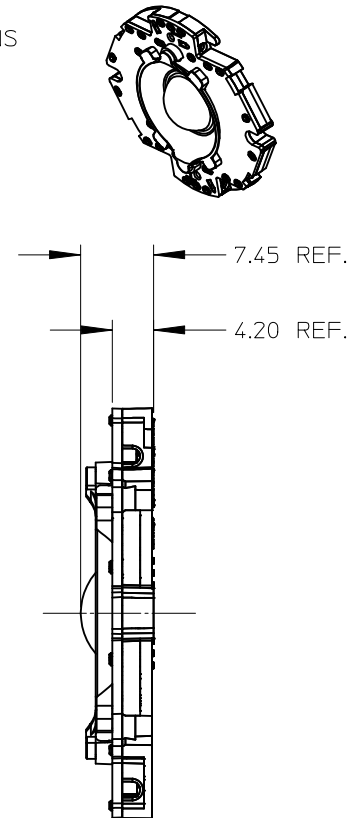
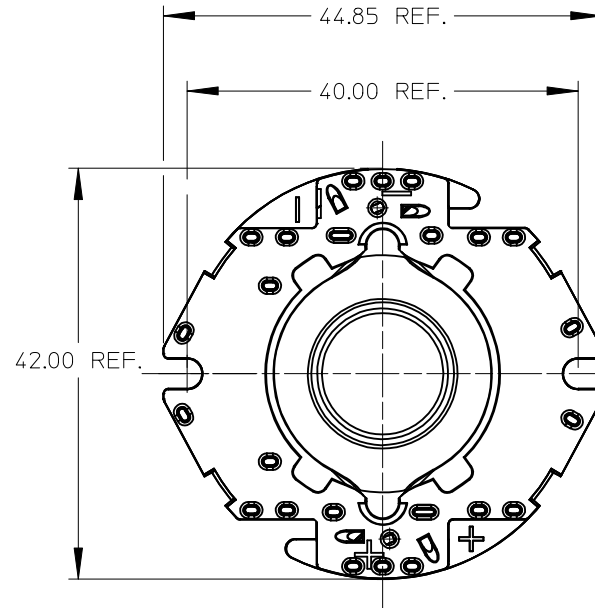
RECOMMENDED MOUNTING DIMENSIONS

<b>ENTER DESCRIPTION</b> EC NO: SSL2012-0059 DRAWN: CCARRANZA 2011/12/01 CHKD: DMCGOWAN APPR: DMCGOWAN 2011/12/15	<b>QUALITY SYMBOLS</b> ▽=0 ▽=0 ▽=0	<b>GENERAL TOLERANCES (UNLESS SPECIFIED)</b>		<b>DIMENSION STYLE</b> <b>MM ONLY</b>		<b>SCALE</b> 2:1	<b>DESIGN UNITS</b> METRIC	<b>THIRD ANGLE PROJECTION</b>		
		4 PLACES	± ---	± ---	DRAWN BY	DATE	<b>CREE MP-L EASY WHITE LED HOLDER</b>			
		3 PLACES	± ---	± ---	CCARRANZA	2010/10/07				
		2 PLACES	± 0.13	± ---	CHECKED BY	DATE	<b>MOLEX INCORPORATED</b>			
1 PLACE	± 0.25	± ---	DMCGOWAN	2010/11/23						
ANGULAR ±1/2°		DRAFT WHERE APPLICABLE MUST REMAIN WITHIN DIMENSIONS		<b>SEE CHART</b>		APPROVED BY MATERIAL NO.	DATE DOCUMENT NO.	<b>SD-180160-000</b>		
<b>B1</b>		<b>SIZE B</b>		THIS DRAWING CONTAINS INFORMATION THAT IS PROPRIETARY TO MOLEX INCORPORATED AND SHOULD NOT BE USED WITHOUT WRITTEN PERMISSION						SHEET NO. 1 OF 4

LED HOLDER WIRED IN PARALLEL PART NUMBER 180160-000  
(COVER REMOVED FROM FRONT VIEW FOR CLARITY)



LED HOLDER WITH OPTIONAL CLEAR SNAP-ON LENS  
WIRED IN PARALLEL PART NUMBER 180160-0001

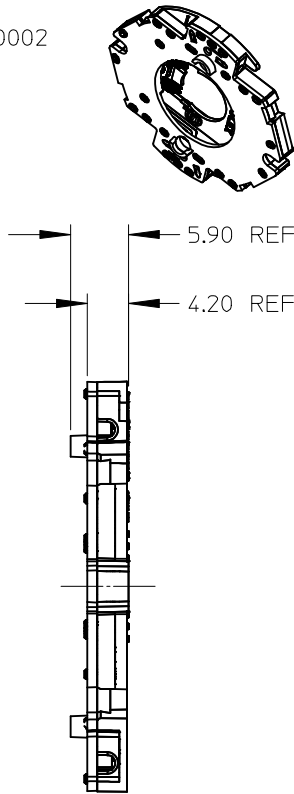
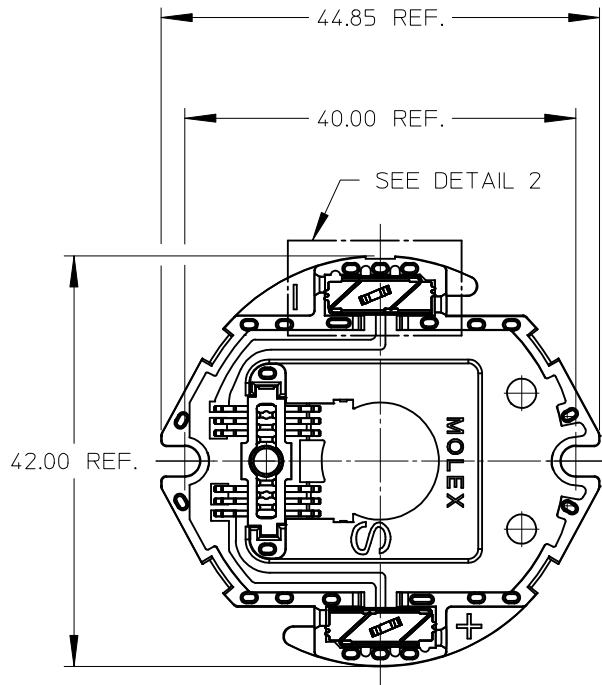


VIEW OF TWO-WAY WIRE TRAP  
WIRE TRAPS WILL ACCOMODATE  
EITHER 18 OR 20 GAUGE WIRE

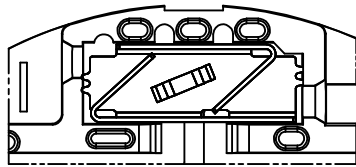
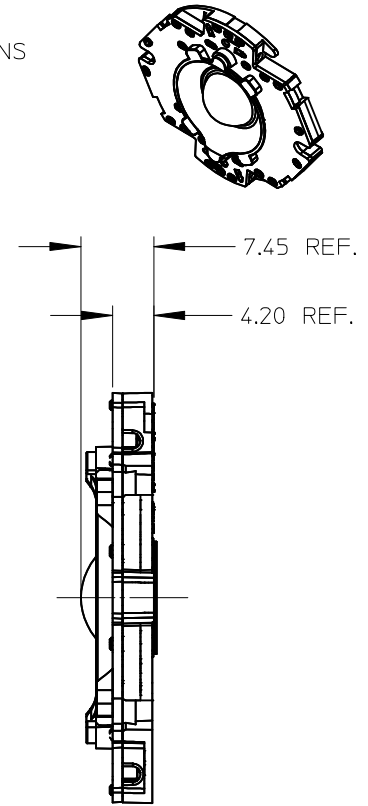
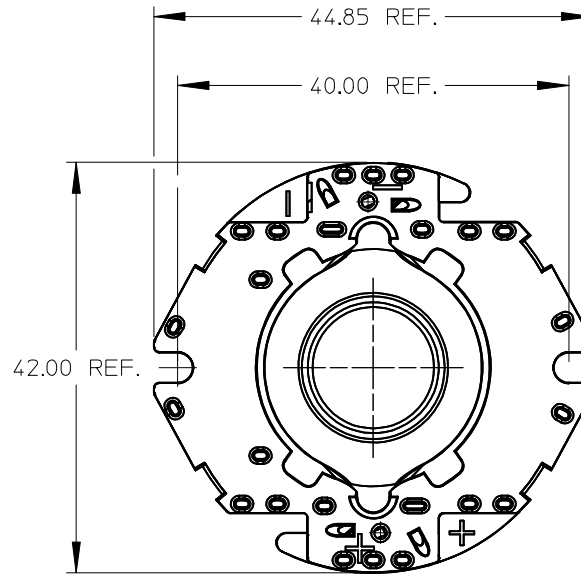
DETAIL 1 SCALE 4:1

<b>ENTER DESCRIPTION</b> EC NO: SSL2012-0059 DRAWN: CCARRANZA 2011/12/01 CHKD: APPR: DMCGOWAN 2011/12/15 REV B1	QUALITY SYMBOLS $\nabla F=0$ $\nabla E=0$ $\nabla F=0$	GENERAL TOLERANCES (UNLESS SPECIFIED) <table border="1"> <thead> <tr> <th></th> <th>mm</th> <th>INCH</th> </tr> </thead> <tbody> <tr> <td>4 PLACES</td> <td><math>\pm</math>---</td> <td><math>\pm</math>---</td> </tr> <tr> <td>3 PLACES</td> <td><math>\pm</math>---</td> <td><math>\pm</math>---</td> </tr> <tr> <td>2 PLACES</td> <td><math>\pm</math>0.13</td> <td><math>\pm</math>---</td> </tr> <tr> <td>1 PLACE</td> <td><math>\pm</math>0.25</td> <td><math>\pm</math>---</td> </tr> <tr> <td colspan="3">ANGULAR <math>\pm 1/2^\circ</math></td> </tr> </tbody> </table>		mm	INCH	4 PLACES	$\pm$ ---	$\pm$ ---	3 PLACES	$\pm$ ---	$\pm$ ---	2 PLACES	$\pm$ 0.13	$\pm$ ---	1 PLACE	$\pm$ 0.25	$\pm$ ---	ANGULAR $\pm 1/2^\circ$			DIMENSION STYLE <b>MM ONLY</b> DRAWN BY: CCARRANZA DATE: 2010/10/07 CHECKED BY: DATE:	SCALE <b>2:1</b>	DESIGN UNITS <b>METRIC</b>	THIRD ANGLE PROJECTION
		mm	INCH																					
	4 PLACES	$\pm$ ---	$\pm$ ---																					
	3 PLACES	$\pm$ ---	$\pm$ ---																					
2 PLACES	$\pm$ 0.13	$\pm$ ---																						
1 PLACE	$\pm$ 0.25	$\pm$ ---																						
ANGULAR $\pm 1/2^\circ$																								
DRAFT WHERE APPLICABLE MUST REMAIN WITHIN DIMENSIONS		SEE CHART	APPROVED BY: DMCGOWAN DATE: 2010/11/23 MATERIAL NO.	TITLE <b>CREE MP-L EASY WHITE LED HOLDER</b>	Molex <b>MOLEX INCORPORATED</b>	SHEET NO. <b>2 OF 4</b>																		
			DOCUMENT NO. <b>SD-180160-000</b>																					
THIS DRAWING CONTAINS INFORMATION THAT IS PROPRIETARY TO MOLEX INCORPORATED AND SHOULD NOT BE USED WITHOUT WRITTEN PERMISSION																								

LED HOLDER WIRED IN SERIES PART NUMBER 180160-0002  
(COVER REMOVED FROM FRONT VIEW FOR CLARITY)



LED HOLDER WITH OPTIONAL CLEAR COVER LENS  
WIRED IN SERIES PART NUMBER 180160-0003



VIEW OF TWO-WAY WIRE TRAP  
WIRE TRAPS WILL ACCOMODATE  
EITHER 18 OR 20 GAUGE WIRE

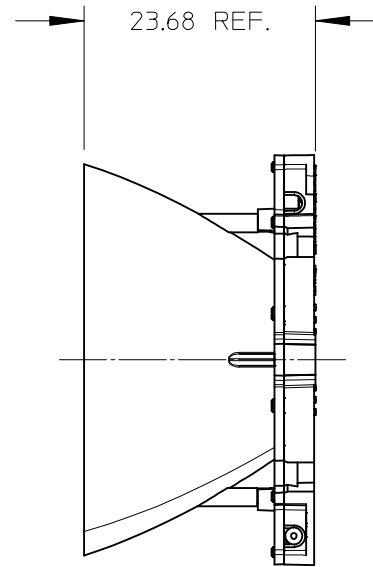
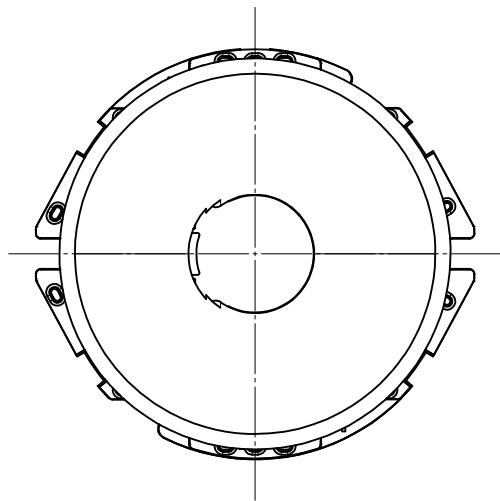
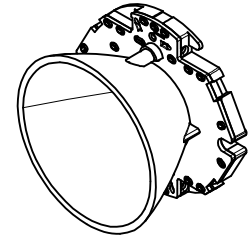
DETAIL 2 SCALE 4:1

<b>ENTER DESCRIPTION</b> EC NO: SSL2012-0059 DRWNG: CCARRANZA 2011/12/01 CHKD: JAPPR:DMCGOWAN 2011/12/15 APPR:DMCGOWAN	<b>QUALITY SYMBOLS</b> ▽=0 ▽=0 ▽=0	GENERAL TOLERANCES (UNLESS SPECIFIED)		DIMENSION STYLE <b>MM ONLY</b>		SCALE 2:1	DESIGN UNITS METRIC	THIRD ANGLE PROJECTION			
		4 PLACES ± --- ± ---	3 PLACES ± --- ± ---	2 PLACES ± 0.13 ± ---	1 PLACE ± 0.25 ± ---	DRAWN BY CCARRANZA	DATE 2010/10/07	TITLE CREE MP-L EASY WHITE LED HOLDER			
		ANGULAR ± 1/2°				APPROVED BY DMCGOWAN	DATE 2010/11/23	MOLEX INCORPORATED			
		DRAFT WHERE APPLICABLE MUST REMAIN WITHIN DIMENSIONS				SEE CHART		MATERIAL NO.	DOCUMENT NO. SD-180160-000	SHEET NO. 3 OF 4	
B1	REV	THIS DRAWING CONTAINS INFORMATION THAT IS PROPRIETARY TO MOLEX INCORPORATED AND SHOULD NOT BE USED WITHOUT WRITTEN PERMISSION									

10 9 8 7 6 5 4 3 2 1

SHOWN WITH OPTIONAL LEDIL REFLECTOR AND  
MOLEX CLEAR COVER (P/N 180162-0002)

LEDIL REFLECTOR SOLD SEPARATELY @ [www.ledil.com](http://www.ledil.com)



<b>ENTER DESCRIPTION</b> EC NO: SSL2012-0059 DRW: CCARRANZA 2011/12/07 CHKD: APPR: DMCGOWAN 2011/12/15 REV <b>B1</b>	<b>QUALITY SYMBOLS</b> F/0 F/0 F/0	<b>GENERAL TOLERANCES (UNLESS SPECIFIED)</b>		<b>DIMENSION STYLE</b> MM ONLY		SCALE 1:1	DESIGN UNITS METRIC	THIRD ANGLE PROJECTION			
		4 PLACES	± ---	± ---	DRAWN BY CCARRANZA	DATE 2010/10/07	TITLE CREE MP-L EASY WHITE LED HOLDER				
		3 PLACES	± ---	± ---	CHECKED BY	DATE					
		2 PLACES	± 0.13	± ---	APPROVED BY DMCGOWAN		DATE 2010/11/23	Molex MOLEX INCORPORATED		SHEET NO. 4 OF 4	
1 PLACE	± 0.25	± ---	MATERIAL NO.		SEE CHART		DOCUMENT NO. SD-180160-000		THIS DRAWING CONTAINS INFORMATION THAT IS PROPRIETARY TO MOLEX INCORPORATED AND SHOULD NOT BE USED WITHOUT WRITTEN PERMISSION		
DRAFT WHERE APPLICABLE MUST REMAIN WITHIN DIMENSIONS											

9 8 7 6 5 4 3 2 1