



Connect your computer to Profibus DP, MPI/S7, PPI/PPI+, and FDL/S5 Networks.

BradCommunications™ applicom® is the easiest and trouble free solution to quickly connect your visualization application to the industrial world.

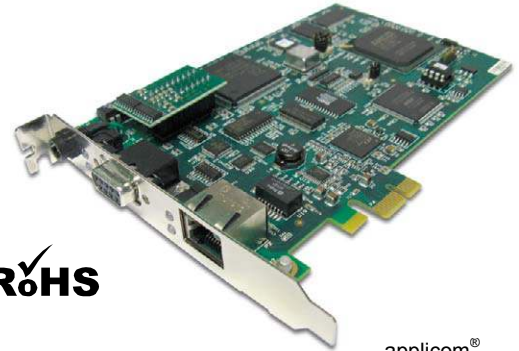
14 May. 10
DW2005102

Profibus Network Interface Cards

Best choice for SCADA/HMI applications

Features

- **New!**
 - Support of Windows 32-bit and 64-bit (WoW64)
 - Support of Windows Seven and 2008 Server
- **COMBO protocol: Run all Profibus protocols simultaneously (DP, PPI/PPI+, S7/ MPI, FDL, FMS)**
- **Complete and user-friendly package**
 - ▶ All components in the box
 - ▶ 2 years of hardware warranty
 - ▶ Local technical support with worldwide representation
 - ▶ 1 driver / 1 configuration tool for all protocols
 - ▶ Graphical User Interface
 - ▶ Network diagnostic and test tools
- **On-board processor eliminates data bottle necks, ensuring delivery of time critical information**
- **Certified with more 50 major SCADA/HMI packages Each card onboard an internal Data Base (32 Kwords + 32 Kbits)**
- **Compatible with:**
 - ▶ Simatic® S7 Series (S7-300, S7-400)
 - ▶ Simatic® S5 Series (95U, 115U, 135U, 155U)



applicom®
PCIE1500PFB / PCIE1500S7



Supported OS

Standard package

- **Windows 32-bit and 64-bit (WoW64)**
 - Windows XP
 - Windows 2003 Server
 - Windows Vista
 - Windows Seven
 - Windows 2008 Server
 - Windows 2008 Server R2

Free Download

- **Other operating systems**
 - Ardence RTX
 - VxWorks
 - QNX
 - Linux
 - DOS

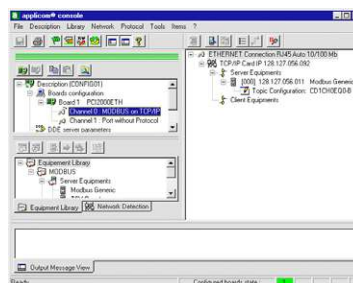
Overview

applicom® is a range of intelligent communication solutions, complete and ready to use covering more than 40 protocols among a wide choice of industrial networks and fieldbuses: Ethernet TCP/IP, Profibus, Modbus Plus, Data Highway Plus, WorldFIP and Serial Links. These solutions connect your PC-based applications (HMI, SCADA, MES, Custom applications) to industrial equipment (programmable controller, I/O modules, devices...).

Thanks to applicom® smart technology - built-in processor, each interface card is able to execute all management and the processing (polling, frame management, etc.) of communications protocols, resulting in extremely fast, efficient application performance.

The applicom® software package includes:

- Graphical configuration software.
- Test and network diagnostic tools.
- Data servers
 - ✓ OPC DA v1.0a, v2.05 and v3.0 (including an OPC client with its source code)
 - ✓ Wonderware I/O Server (DDE, FastDDE, SuiteLink)
- Development libraries
 - ✓ DLL Library
 - ✓ MS Visual Studio (.NET/C#/VB/C++/C), Borland Delphi, Windev
 - ✓ National Instruments (LabWindows CVI, LabVIEW/VI)




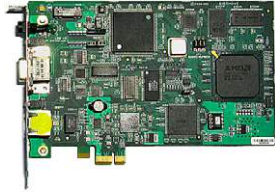
- Configuration Software -



- OPC Server -



Technical data

	applicom® PCU1500PFB / PCU1500S7	applicom® PCIE1500PFB / PCIE1500S7
		
Key Benefits	<ul style="list-style-type: none"> • Universal PCI 3.3 V / 5V (PCI-X compatible) • RoHS compliant • On-board processor 	<ul style="list-style-type: none"> • PCI Express 1x • RoHS compliant • On-board processor
Hardware		
Unit	PCI 2.2, short card, single slot, 3.3V/5V	PCI Express 1x, rev 1.0a
Processor	AMD SC520 - 133 MHz	AMD SC520 - 133 MHz
ASIC	–	–
Memory	16 Mbytes SDRAM	16 Mbytes SDRAM
Flash Memory	4 Mbytes	4 Mbytes
Interruption	Hardware Plug&Play	Hardware Plug&Play
DPRAM Address	Hardware Plug&Play (32 Kbytes)	Hardware Plug&Play (32 Kbytes)
Discrete Input	Opto-coupled discrete input, Voltage -> +10 to +30 DC or 24 V AC (50-60 Hz)	Opto-coupled discrete input Voltage -> DC +10 to +30 or AC 24 V (50 to 60 Hz)
Discrete Output	« Watchdog » output contact free from potential, (floating) (24V DC, 0.25A)	« Watchdog » output contact free from potential, (floating) (24V DC, 0.25A)
Dimensions (LxW)	168mm x 107mm (6.61" x 4.21")	168mm x 107mm (6.61" x 4.21")
Consumption	5.5 W	5.5 W
Operating T°	0° C (32° F) ↔ +65° C (149° F)	0° C (32° F) up to +65° C (149° F)
Storage T°	-40° C (-40° F) ↔ +85° C (185° F)	-40° C (-40° F) up to +85° C (185° F)
RoHS compliant	Yes	Yes
EMC Compliance⁽¹⁾	EN55022 Class B, EN61000-6-2, EN61000-3-2, EN61000-3-3	EN55022 Class B, EN61000-6-2, EN61000-3-2, EN61000-3-3
Communication port		
Port type	1 Profibus port (EN 50170)	1 Profibus port (EN 50170)
Connector	Profibus D-Sub, 9 pin, female	Profibus D-Sub, 9 pin, female
LED Indicator	2 leds: TX / RX	1 Status LED / 1 Bus Fault LED
Electrical Interface	RS485 optical insulation (500 V) (optional: Profibus D-Sub 9-pin attach vertical connector with diag.)	RS485 with galvanic insulation (500 volts)
Baud Rate	9600 kbps ↔ 1,5 Mbps	9600 kbps ↔ 12 Mbps
Supported Protocols		
Protocol	<p>PCU1500PFB</p> <ul style="list-style-type: none"> • Profibus DP-V0 (Master) • S7 / MPI (Master) • PPI/PPI+ (Master) • Send/Receive on FDL • FDL S5 (Master) <p>PCU1500S7</p> <ul style="list-style-type: none"> • S7 / MPI (Master) • PPI/PPI+ (Master) • Send/Rec on FDL 	<p>PCIE1500PFB</p> <ul style="list-style-type: none"> • Profibus DP-V0 (Master) • S7 / MPI (Master) • PPI/PPI+ (Master) • Send/Receive on FDL • FDL S5 (Master) <p>PCIE1500S7</p> <ul style="list-style-type: none"> • S7 / MPI (Master) • PPI/PPI+ (Master) • Send/Rec on FDL



Technical data



Key Benefits	
	<ul style="list-style-type: none"> • CompactPCI 3U • On-board processor
Hardware	
Unit	CompactPCI 3U board, 5V
Processor	AMD SC520 – 133 MHz
ASIC	ASPC2
Memory	8 M Byte dynamic RAM
Flash Memory	512 Kbytes
Interruption	Hardware Plug&Play
DPRAM Address	Hardware Plug&Play (32 Kbytes)
Discrete Input	ns
Discrete Output	ns
Dimensions (LxW)	100mm x 160mm (3.93" x 6.29") - 3U
Consumption	5 W (max. 0.8A)
Operating T°	0° C (32° F) ↔ +65° C (149° F)
Storage T°	-40° C (-92° F) ↔ +80° C (176° F)
RoHS compliant	No
EMC Compliance⁽¹⁾	EN55022 Class B, EN61000-6-2, EN61000-3-2, EN61000-3-3
Communication port	
Port type	1 Profibus port (EN 50170)
Connector	Profibus D-Sub, 9 pin, female
LED Indicator	1 Status LED / 1 Bus Fault LED
Electrical Interface	RS485 with galvanic insulation (500 volts)
Baud Rate	9600 kbps ↔ 12 Mbps
Supported Protocols	
Protocol	<ul style="list-style-type: none"> • Profibus DP-V0 (Master & Slave) • S7 / MPI (Master) • PPI/PPI+ (Master) • Send/Rec on FDL

Profibus Network Interface Cards



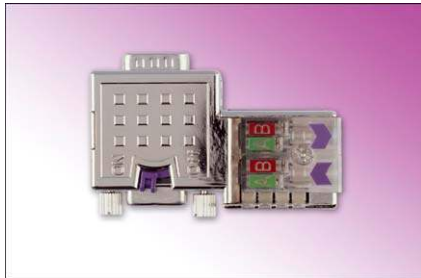
- Profibus backplanes -



- Profibus gateways -



- Profibus connectivity -



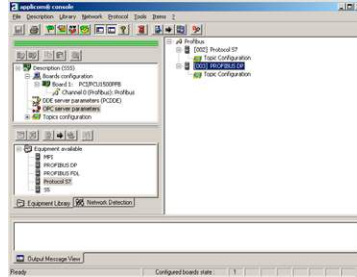
- Profibus D-Sub with diagnostic -



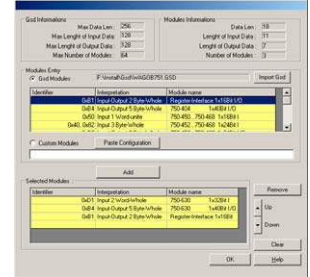
- IP67 & IP 20 I/O modules -

Software tools

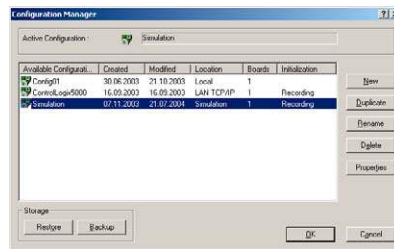
The core of applicom[®] solutions lies in effective software tools enabling fast integration of industrial communication into your applications.



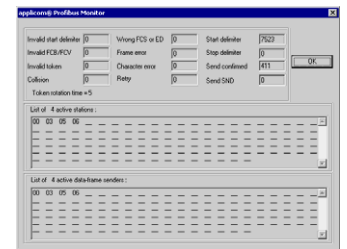
- Configuration Software -



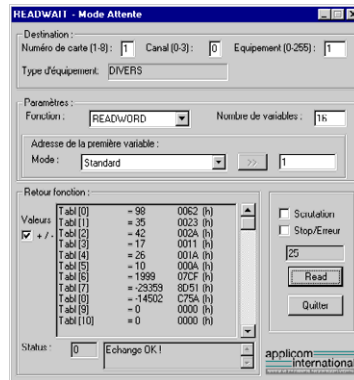
- GSD Editor -



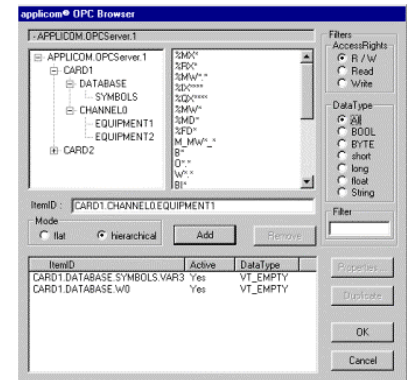
- User's configuration manager -



- Profibus Troubleshooting Tool -



- Testing tools -



- OPC Browser -

Ordering Information

Part Number	SAP	Product description
APP-PFB-PCU-C	1120110004	applicom [®] PCU1500PFB Full Profibus 1.5Mb card, PCI 3.3V/5V bus (PCI-X compatible), RoHS compliant
APP-PFB-PCIE	1120115026	applicom [®] PCIE1500PFB Full Profibus 1.5Mb card, PCI Express 1x bus, RoHS compliant
APP-PS7-PCU-C	1120110006	applicom [®] PCU1500PFB Profibus Simatic [®] S7 1.5Mb card, PCI 3.3V/5V bus (PCI-X compatible), RoHS compliant
APP-PS7-PCIE	1120115027	applicom [®] PCIE1500PFB Profibus Simatic [®] S7 1.5Mb card, PCI Express 1x bus, RoHS compliant
APP-PFB-CPI-C	1120185003	applicom [®] CPCI1000PFB Full Profibus 12Mb card, CompactPCI 3U

Other related products: COMBO Ethernet+Profibus solutions (PCI Universal / PCI Express). Profibus-DP Master&Slave for PC-Based control (PCI Universal, PC/104, CompactPCI). Low cost S7/MPI solutions (PCI Universal, USB).

To contact us: www.woodhead.com

North America: US: +1 (630) 969-4550 – Canada: +1 519 725 5136
 Europe: France: +33 2 32 96 04 20 – Germany: +49 752 94 96 0 – Italy: +39 (02) 950551 – UK: +44 (1252) 720720
 Asia: China: +86 21-5048-0889 Singapore: +65 6-268-6868 – Japan: +81 46-265-2325 – Korea: +82 31-492-9000

Brad is a registered trademark and BradControl, BradCommunications, applicom, Direct-Link and SST are trademarks of Molex Incorporated. © 2010 Molex