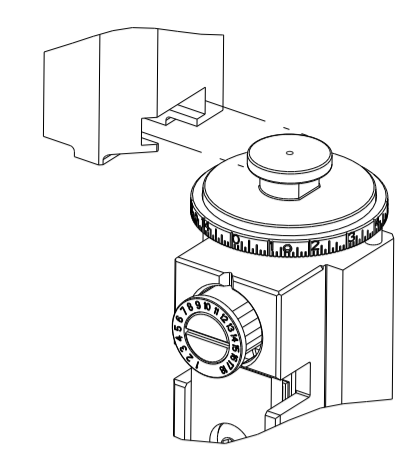


| PART NUMBER | REVISION | DESCRIPTION | FEED TYPE |
|-------------|----------|---------------------------------|-----------|
| 2151285-2 | G | FINE CRIMP HEIGHT ADJUST | PNEUMATIC |
| 7-2151285-2 | G | PNEUMATIC AND CRIMP TOOLING KIT | PNEUMATIC |
| 7-2151285-7 | A | CRIMP TOOLING KIT | - |

ATLANTIC VERSION TERMINATOR INTERFACE ADAPTER



| APPLICATOR DATA | | |
|-----------------|----------------|------|
| CRIMP | SIZE | TYPE |
| WIRE | 5.08 mm [.200] | F |
| INSUL | 7.62 mm [.300] | F |

APPLICATOR INSTRUCTIONS
408-35042

| TERMINAL DATA: TE TERMINAL | | TE CRIMP SPECIFICATION | |
|---|-------------|------------------------------|-------------|
| TERMINAL NAME: MAXI-POWER-TIMER CONTACT GAP 0.8 | | | |
| WIRE STRIP LENGTH | | INSULATION DIAMETER RANGE | |
| 8.40-9.20 mm [.331-.362 IN] | | Ø4.60-6.60 mm [.181-.260 IN] | |
| TERMINAL APPLICATION SPECIFICATION | 114-18075 | - | - |
| TERMINALS APPLIED | | | |
| TE TERMINAL | TE TERMINAL | TE TERMINAL | TE TERMINAL |
| 962932-1 | 1-962932-6 | 2-962932-1 | 9-962932-1 |
| 965918-1 | 2-965918-1 | 1-1703008-6 | |

| WIRE SIZE | CRIMP HEIGHT mm [INCH] | CRIMP HEIGHT REFERENCE SETTING |
|----------------------|-------------------------------|--------------------------------|
| 10.00mm ² | 3.82 +/- 0.1 [.150 +/- .004] | 3.8 |
| 6.00mm ² | 3.20 +/- 0.05 [.126 +/- .002] | 12.2 |

- RECOMMENDED SPARE PARTS
- REFER TO SUPPLIED INSTRUCTION SHEET FOR CLEANING, LUBRICATION AND STORAGE OF APPLICATOR.
- APPLY PART NUMBER 1-23419-5 LOCTITE TO THREADS OF ITEM 50. APPLY PART NUMBER 2-23419-6 LOCTITE TO THREADS OF ITEM 242.
- CRIMP HEIGHT REFERENCE SETTING WAS THE SETTING USED WHEN THE APPLICATOR WAS QUALIFIED AT THE FACTORY. ADJUSTMENT MAY BE NECESSARY WHEN RUNNING APPLICATOR IN THE FIELD.
- TERMINAL PITCH NOT COMPATIBLE WITH MECHANICAL FEED.
- TERMINAL LUBRICANT IS RECOMMENDED.
- 7. UNLESS SPECIFIED OTHERWISE TORQUE VALUES SHALL BE USED PER DOCUMENT, 101-35000.

***WARNING**
ON INSTALLATION, SET WIRE DISC TO CRIMP HEIGHT REFERENCE SETTING FOR LARGEST WIRE SIZE. CRIMP HEIGHT REFERENCE SETTINGS GREATER THAN THE VALUE SHOWN MAY CAUSE DAMAGE TO THE CRIMP TOOLING. REFER TO THE INSTRUCTION SHEET FOR PROPER SETUP AND ADJUSTMENTS.

ATLANTIC VERSION
Shown on sheets 1 of 4 & 2 of 4
(Pacific version shown on sheets 3 of 4 & 4 of 4)

| LOC | DIST | REVISIONS | | | |
|-----|------|-----------|-----------|-----|------|
| A | 66 | REV | DATE | BY | CHKD |
| | | E | 21SEP2018 | MP | GB |
| | | E1 | 20MAR2019 | FZ | YY |
| | | F | 06JUN2019 | TB | TE |
| | | G | 26JUL2021 | JAH | TE |

| | | | | | |
|---|-----|-----|-------------|-------------------------------------|-----|
| - | 1 | 1 | 2119641-1 | FEED CAM, AIR FEED | 248 |
| - | 1 | 1 | 2119082-9 | CAM, SNAIL, INSULATION ADJUSTMENT | 244 |
| - | 1 | 1 | 2079764-1 | WASHER, WAVE SPRING, CREST-TO-CREST | 243 |
| | 1 | 1 | 2119083-1 | RETAINER, INSULATION DIAL | 242 |
| - | 1 | 1 | 7-18023-7 | SCR, SKT HD CAP M3 X 4.0 | 241 |
| - | 1 | 1 | 2844940-2 | AIR FEED MODULE | 238 |
| - | 1 | 1 | 993111-1 | PIN, SLOTTED SPRING 3.0 X 20.0 | 177 |
| - | 1 | 1 | 8-22280-7 | SPRING, COMPRESSION | 176 |
| - | 1 | 1 | 1752353-2 | GUIDE PIN, HOLDDOWN | 175 |
| - | 1 | 1 | 1901680-2 | GUIDE PIN, HOLDDOWN | 174 |
| - | REF | REF | 994970-2 | COUNTER, MAGNETIC | 164 |
| - | 1 | 1 | 318563-1 | GUARD, FRONT CHIP | 119 |
| | 1 | 1 | 2119955-1 | ASSY, LUBRICATOR, SIDE FEED | 113 |
| - | 1 | 1 | 2844908-1 | SCREW, LOCKING | 99 |
| - | 1 | 1 | 2844907-1 | POST, LOCKING | 98 |
| - | 1 | 1 | 1-455888-4 | SPACER, CRIMPER | 83 |
| - | 1 | 1 | 2-455888-2 | SPACER, CRIMPER | 82 |
| - | 2 | 2 | 2079383-4 | SCR, BHSC, RoHS (M4 X 8) | 79 |
| - | 1 | 1 | 1803096-1 | EXTENSION PLATE | 78 |
| - | 1 | 1 | 1803607-3 | DOCUMENTATION PACKAGE | 71 |
| - | 1 | 1 | 2119791-9 | DEPRESSOR, WIRE | 70 |
| - | 1 | 1 | 2119740-1 | TAG, IDENTIFICATION | 67 |
| - | 2 | 2 | 2168078-1 | SCREW, DRIVE, RH, RoHS, 2 x .188 | 66 |
| - | 1 | 1 | 2168083-2 | SCR, SKT HD CAP, RoHS, M4 X 8.0 | 60 |
| - | 1 | 1 | 5-18022-5 | SCR, HEX HD CAP, M4 X 6.0 | 59 |
| - | 1 | 1 | 1338683-8 | FEED PAWL | 56 |
| - | 4 | 4 | 2168083-3 | SCR, SKT HD CAP, RoHS, M4 X 12.0 | 54 |
| - | 1 | 1 | 1-5018030-0 | NUT, HEX, REG, RoHS, M3.5 | 52 |
| - | 1 | 1 | 2031311-1 | HOLDDOWN, TERMINAL | 51 |
| | 1 | 1 | 2-1752354-3 | STANDOFF, HOLD-DOWN | 50 |
| - | 1 | 1 | 18023-9 | SCR, SKT HD CAP M4 X 6.0 | 49 |
| - | 1 | 1 | 1803583-9 | APPLICATOR BASIC ASSEMBLY, SF | 46 |
| - | 1 | 1 | 1803515-2 | RAM ASSEMBLY, SF ATLANTIC | 44 |
| - | 1 | 1 | 1803602-2 | SCR, BHSC, RoHS (M8 X 40) | 41 |
| - | 1 | 1 | 1-1752356-0 | SUPPORT, TERMINAL | 34 |
| - | 2 | 2 | 2079383-5 | SCR, BHSC, RoHS (M4 X 20) | 33 |
| - | 2 | 2 | 2-2844962-6 | SPACER, CYLINDRICAL, STRIP GUIDE | 30 |
| - | 1 | 1 | 1-2844992-0 | ASSEMBLY, STRIP GUIDE | 29 |
| - | 1 | 1 | 1-455888-0 | SPACER, CRIMPER | 28 |
| - | 1 | 1 | 1320928-4 | STRIP GUIDE | 24 |
| - | 1 | 1 | 2168083-2 | SCR, SKT HD CAP, RoHS, M4 X 8.0 | 21 |
| - | 1 | 1 | 1-18028-2 | WASHER, FLAT, REG M4 | 20 |
| - | 1 | 1 | 2119533-5 | STRIPPER, SIDE FEED | 19 |
| | 1 | 1 | 2119806-1 | INSERT, SHEAR | 13 |
| - | 1 | 1 | 3-22280-3 | SPRING, COMPRESSION | 12 |
| - | 1 | 1 | 1-356885-4 | STOP, SHEAR | 11 |
| | 1 | 1 | 2119805-1 | SHEAR HOLDER, FRONT | 10 |
| | 1 | 1 | 454276-5 | FLOATING SHEAR, FRONT | 9 |
| | 1 | 2 | 1976051-4 | COMBINATION ANVIL | 8 |
| - | - | - | - | - | 7 |
| - | 1 | 1 | 1-2119757-0 | DEPRESSOR, SHEAR | 5 |
| - | 1 | 1 | 4-238011-5 | BLOCK, CRIMPER SPACER | 4 |
| | 1 | 2 | 1-1633961-9 | CRIMPER, INSULATION F PREMIUM | 3 |
| - | 1 | 1 | 1-455888-8 | SPACER, CRIMPER | 2 |
| | 1 | 2 | 1-1633305-3 | CRIMPER, WIRE PREMIUM | 1 |

| DIMENSIONS: | | TOLERANCES UNLESS OTHERWISE SPECIFIED: | | MATERIAL: | | FINISH: | |
|-------------|---------|--|---------|-----------|---------|---------|--------|
| mm | 0 PLC ± | 1 PLC ± | 2 PLC ± | 3 PLC ± | 4 PLC ± | ANGLES | FINISH |
| | | | | | | | |

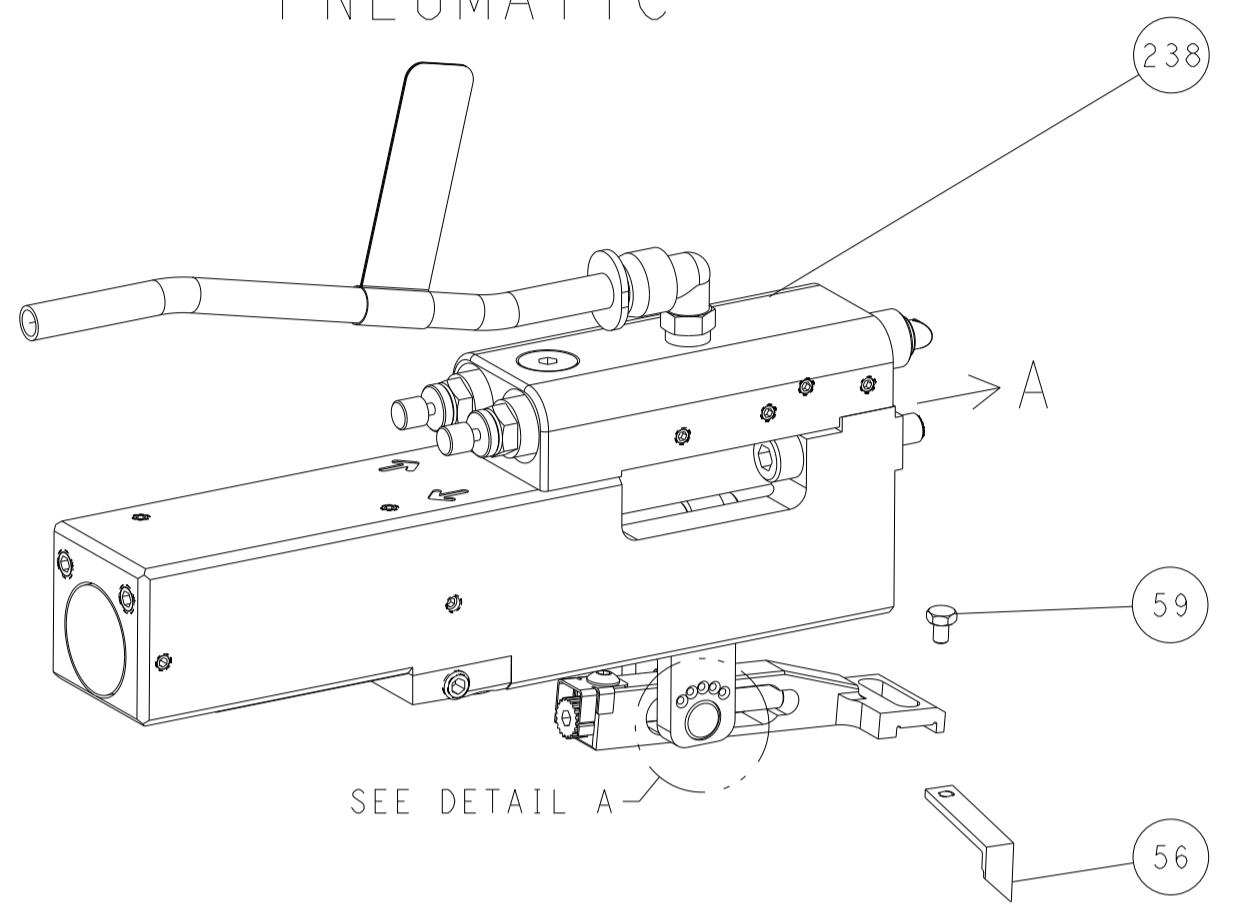
| OWN | CHK | APVD | DATE | NAME | SIZE | CAGE CODE | DRAWING NO | RESTRICTED TO |
|--------|-----------|-------|-----------|-----------|------|-----------|------------|---------------|
| Y. YIN | G. BAILEY | S. XI | 10APR2012 | G. BAILEY | A1 | 00779 | 2151285 | |

Customer Accessible Production Drawing SCALE 1:2 SHEET 1 OF 4 REV G

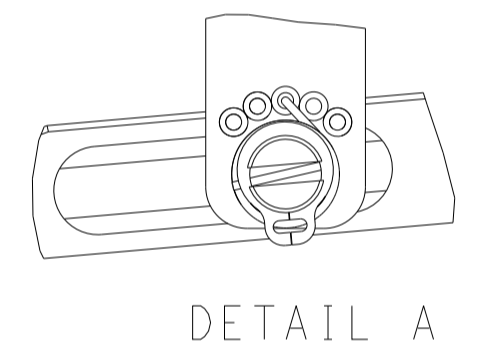
| LOC | DIST | REVISIONS | | | | | |
|-----|------|-----------|-----|-------------|------|-----|------|
| | | P | LTN | DESCRIPTION | DATE | DWN | APVD |
| A | 66 | - | - | SEE SHEET 1 | - | - | - |

FEED TYPE

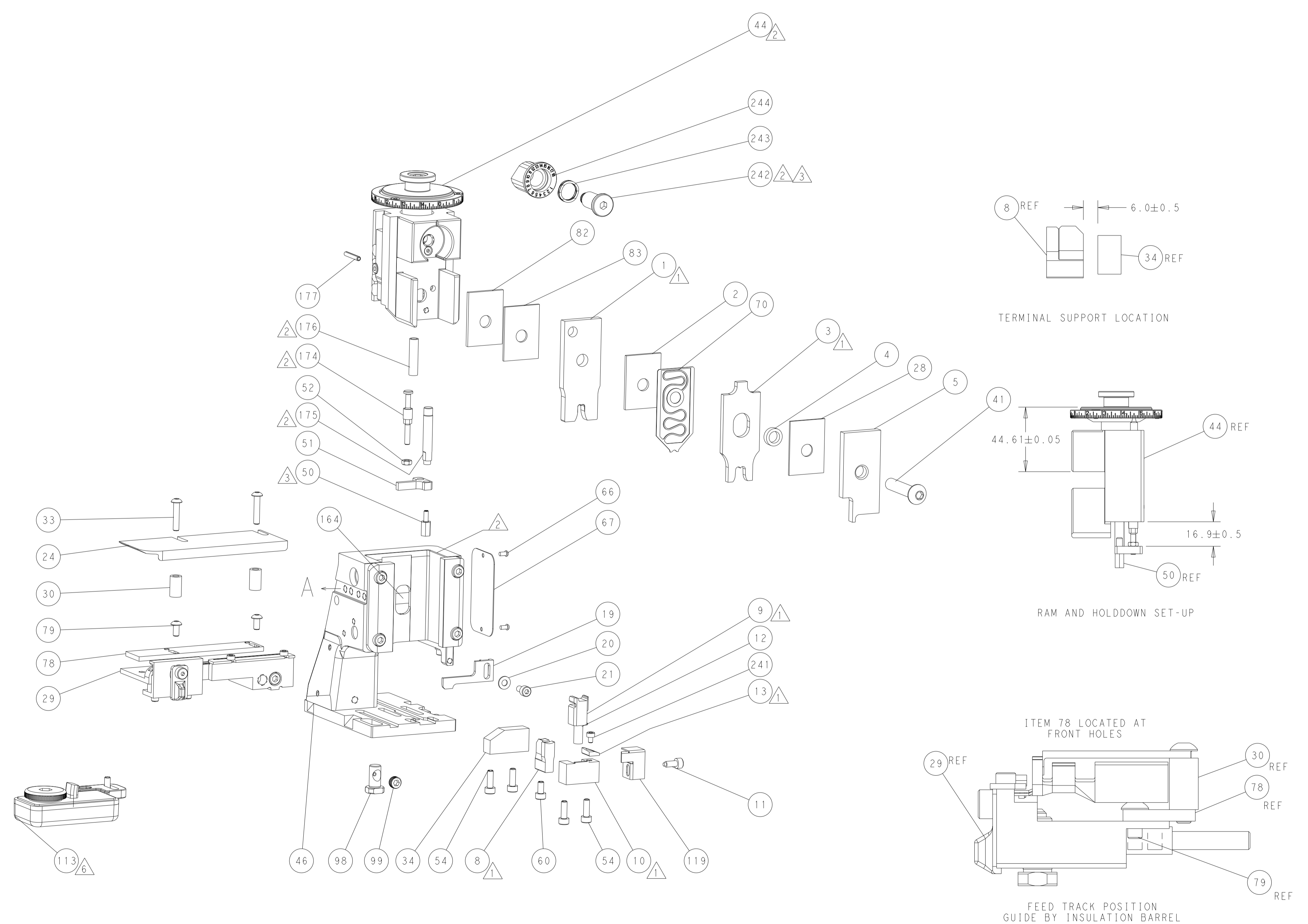
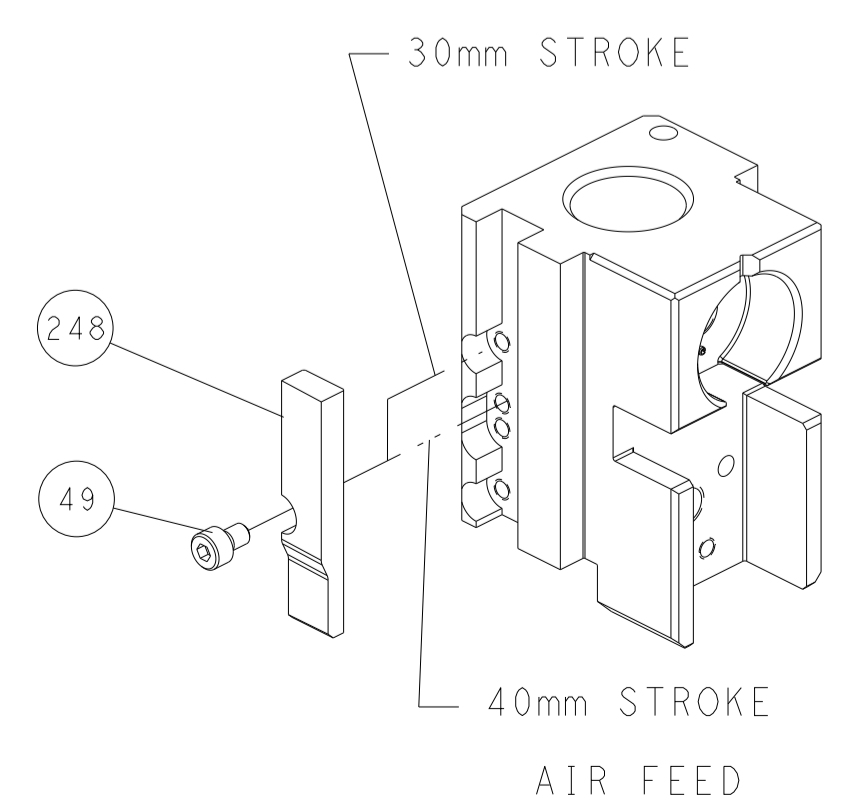
PNEUMATIC



FEED SPRING SETTING POSITION (SHOWN FROM REAR SIDE)



CAM POSITION

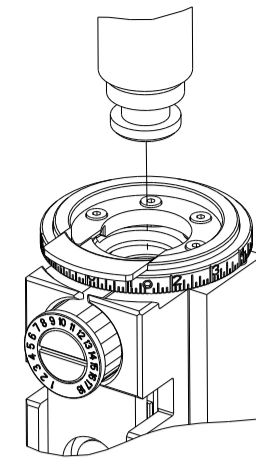


ATLANTIC VERSION
 Shown on sheets 1 of 4 & 2 of 4
 (Pacific version shown on sheets 3 of 4 & 4 of 4)

| DIMENSIONS: | | TOLERANCES UNLESS OTHERWISE SPECIFIED: | | DWG Y. YIN 10APR2012 | CHK G. BAILEY 10APR2012 | NAME Ocean Side Feed Applicator | SCALE 1:2 | SHEET 2 OF 4 | REV G |
|-------------|-----|--|---|-------------------------|----------------------------|------------------------------------|--------------|-----------------|----------|
| mm | PLC | ± | ° | | | | | | |
| 0 | PLC | ± | ° | | | | | | |
| 1 | PLC | ± | ° | | | | | | |
| 2 | PLC | ± | ° | | | | | | |
| 3 | PLC | ± | ° | | | | | | |
| 4 | PLC | ± | ° | | | | | | |
| 5 | PLC | ± | ° | | | | | | |
| 6 | PLC | ± | ° | | | | | | |
| 7 | PLC | ± | ° | | | | | | |
| 8 | PLC | ± | ° | | | | | | |
| 9 | PLC | ± | ° | | | | | | |
| 10 | PLC | ± | ° | | | | | | |
| 11 | PLC | ± | ° | | | | | | |
| 12 | PLC | ± | ° | | | | | | |
| 13 | PLC | ± | ° | | | | | | |
| 14 | PLC | ± | ° | | | | | | |
| 15 | PLC | ± | ° | | | | | | |
| 16 | PLC | ± | ° | | | | | | |
| 17 | PLC | ± | ° | | | | | | |
| 18 | PLC | ± | ° | | | | | | |
| 19 | PLC | ± | ° | | | | | | |
| 20 | PLC | ± | ° | | | | | | |
| 21 | PLC | ± | ° | | | | | | |
| 22 | PLC | ± | ° | | | | | | |
| 23 | PLC | ± | ° | | | | | | |
| 24 | PLC | ± | ° | | | | | | |
| 25 | PLC | ± | ° | | | | | | |
| 26 | PLC | ± | ° | | | | | | |
| 27 | PLC | ± | ° | | | | | | |
| 28 | PLC | ± | ° | | | | | | |
| 29 | PLC | ± | ° | | | | | | |
| 30 | PLC | ± | ° | | | | | | |
| 31 | PLC | ± | ° | | | | | | |
| 32 | PLC | ± | ° | | | | | | |
| 33 | PLC | ± | ° | | | | | | |
| 34 | PLC | ± | ° | | | | | | |
| 35 | PLC | ± | ° | | | | | | |
| 36 | PLC | ± | ° | | | | | | |
| 37 | PLC | ± | ° | | | | | | |
| 38 | PLC | ± | ° | | | | | | |
| 39 | PLC | ± | ° | | | | | | |
| 40 | PLC | ± | ° | | | | | | |
| 41 | PLC | ± | ° | | | | | | |
| 42 | PLC | ± | ° | | | | | | |
| 43 | PLC | ± | ° | | | | | | |
| 44 | PLC | ± | ° | | | | | | |
| 45 | PLC | ± | ° | | | | | | |
| 46 | PLC | ± | ° | | | | | | |
| 47 | PLC | ± | ° | | | | | | |
| 48 | PLC | ± | ° | | | | | | |
| 49 | PLC | ± | ° | | | | | | |
| 50 | PLC | ± | ° | | | | | | |
| 51 | PLC | ± | ° | | | | | | |
| 52 | PLC | ± | ° | | | | | | |
| 53 | PLC | ± | ° | | | | | | |
| 54 | PLC | ± | ° | | | | | | |
| 55 | PLC | ± | ° | | | | | | |
| 56 | PLC | ± | ° | | | | | | |
| 57 | PLC | ± | ° | | | | | | |
| 58 | PLC | ± | ° | | | | | | |
| 59 | PLC | ± | ° | | | | | | |
| 60 | PLC | ± | ° | | | | | | |
| 61 | PLC | ± | ° | | | | | | |
| 62 | PLC | ± | ° | | | | | | |
| 63 | PLC | ± | ° | | | | | | |
| 64 | PLC | ± | ° | | | | | | |
| 65 | PLC | ± | ° | | | | | | |
| 66 | PLC | ± | ° | | | | | | |
| 67 | PLC | ± | ° | | | | | | |
| 68 | PLC | ± | ° | | | | | | |
| 69 | PLC | ± | ° | | | | | | |
| 70 | PLC | ± | ° | | | | | | |
| 71 | PLC | ± | ° | | | | | | |
| 72 | PLC | ± | ° | | | | | | |
| 73 | PLC | ± | ° | | | | | | |
| 74 | PLC | ± | ° | | | | | | |
| 75 | PLC | ± | ° | | | | | | |
| 76 | PLC | ± | ° | | | | | | |
| 77 | PLC | ± | ° | | | | | | |
| 78 | PLC | ± | ° | | | | | | |
| 79 | PLC | ± | ° | | | | | | |
| 80 | PLC | ± | ° | | | | | | |
| 81 | PLC | ± | ° | | | | | | |
| 82 | PLC | ± | ° | | | | | | |
| 83 | PLC | ± | ° | | | | | | |
| 84 | PLC | ± | ° | | | | | | |
| 85 | PLC | ± | ° | | | | | | |
| 86 | PLC | ± | ° | | | | | | |
| 87 | PLC | ± | ° | | | | | | |
| 88 | PLC | ± | ° | | | | | | |
| 89 | PLC | ± | ° | | | | | | |
| 90 | PLC | ± | ° | | | | | | |
| 91 | PLC | ± | ° | | | | | | |
| 92 | PLC | ± | ° | | | | | | |
| 93 | PLC | ± | ° | | | | | | |
| 94 | PLC | ± | ° | | | | | | |
| 95 | PLC | ± | ° | | | | | | |
| 96 | PLC | ± | ° | | | | | | |
| 97 | PLC | ± | ° | | | | | | |
| 98 | PLC | ± | ° | | | | | | |
| 99 | PLC | ± | ° | | | | | | |
| 100 | PLC | ± | ° | | | | | | |

| THIS DRAWING IS UNPUBLISHED. | RELEASED FOR PUBLICATION | | |
|--|--------------------------|--------------------------|-----------|
| COPYRIGHT 20 BY TYCO ELECTRONICS CORPORATION. ALL RIGHTS RESERVED. | | | |
| PART NUMBER | REVISION | DESCRIPTION | FEED TYPE |
| 2-2151285-2 | G | FINE CRIMP HEIGHT ADJUST | PNEUMATIC |
| 7-2151285-7 | A | CRIMP TOOLING KIT | - |

PACIFIC VERSION TERMINATOR
INTERFACE ADAPTER



| APPLICATOR DATA | | |
|--------------------------------------|----------------|------|
| CRIMP | SIZE | TYPE |
| WIRE | 5.08 mm [.200] | F |
| INSUL | 7.62 mm [.300] | F |
| APPLICATOR INSTRUCTIONS 408-35042 | | |

| | | | |
|---|-------------|------------------------------|-------------|
| TERMINAL DATA: TE TERMINAL | | TE CRIMP SPECIFICATION | |
| TERMINAL NAME: MAXI-POWER-TIMER CONTACT GAP 0.8 | | | |
| WIRE STRIP LENGTH | | INSULATION DIAMETER RANGE | |
| 8.40-9.20 mm [.331-.362 IN] | | Ø4.60-6.60 mm [.181-.260 IN] | |
| TERMINAL APPLICATION SPECIFICATION | 114-18075 | - | - |
| TERMINALS APPLIED ⁵ ⁶ | | | |
| TE TERMINAL | TE TERMINAL | TE TERMINAL | TE TERMINAL |
| 962932-1 | 1-962932-6 | 2-962932-1 | 9-962932-1 |
| 965918-1 | 2-965918-1 | 1-1703008-6 | |

| WIRE SIZE | CRIMP HEIGHT mm [INCH] | CRIMP HEIGHT REFERENCE SETTING |
|----------------------|----------------------------|--------------------------------|
| 10.00mm ² | 3.82+/-0.1 [.150+/- .004] | 3.8 |
| 6.00mm ² | 3.20+/-0.05 [.126+/- .002] | 12.2 |



- ¹ RECOMMENDED SPARE PARTS
 - ² REFER TO SUPPLIED INSTRUCTION SHEET FOR CLEANING, LUBRICATION AND STORAGE OF APPLICATOR.
 - ³ APPLY PART NUMBER 1-23419-5 LOCTITE TO THREADS OF ITEM 50. APPLY PART NUMBER 2-23419-6 LOCTITE TO THREADS OF ITEM 242.
 - ⁴ CRIMP HEIGHT REFERENCE SETTING WAS THE SETTING USED WHEN THE APPLICATOR WAS QUALIFIED AT THE FACTORY. ADJUSTMENT MAY BE NECESSARY WHEN RUNNING APPLICATOR IN THE FIELD.
 - ⁵ TERMINAL PITCH NOT COMPATIBLE WITH MECHANICAL FEED.
 - ⁶ TERMINAL LUBRICANT IS RECOMMENDED.
7. UNLESS SPECIFIED OTHERWISE TORQUE VALUES SHALL BE USED PER DOCUMENT, 101-35000.

***WARNING**
ON INSTALLATION, SET WIRE DISC TO CRIMP HEIGHT REFERENCE SETTING FOR LARGEST WIRE SIZE. CRIMP HEIGHT REFERENCE SETTINGS GREATER THAN THE VALUE SHOWN MAY CAUSE DAMAGE TO THE CRIMP TOOLING, REFER TO THE INSTRUCTION SHEET FOR PROPER SETUP AND ADJUSTMENTS.

PACIFIC VERSION
Shown on sheets 3 of 4 & 4 of 4
(Atlantic version shown on sheets 1 of 4 & 2 of 4)

| LOC | DIST | REVISIONS | | | | | |
|-----|------|-----------|-----|-------------|------|-----|------|
| A | 66 | P | LTN | DESCRIPTION | DATE | DWN | APVD |
| | | - | | SEE SHEET 1 | | - | - |

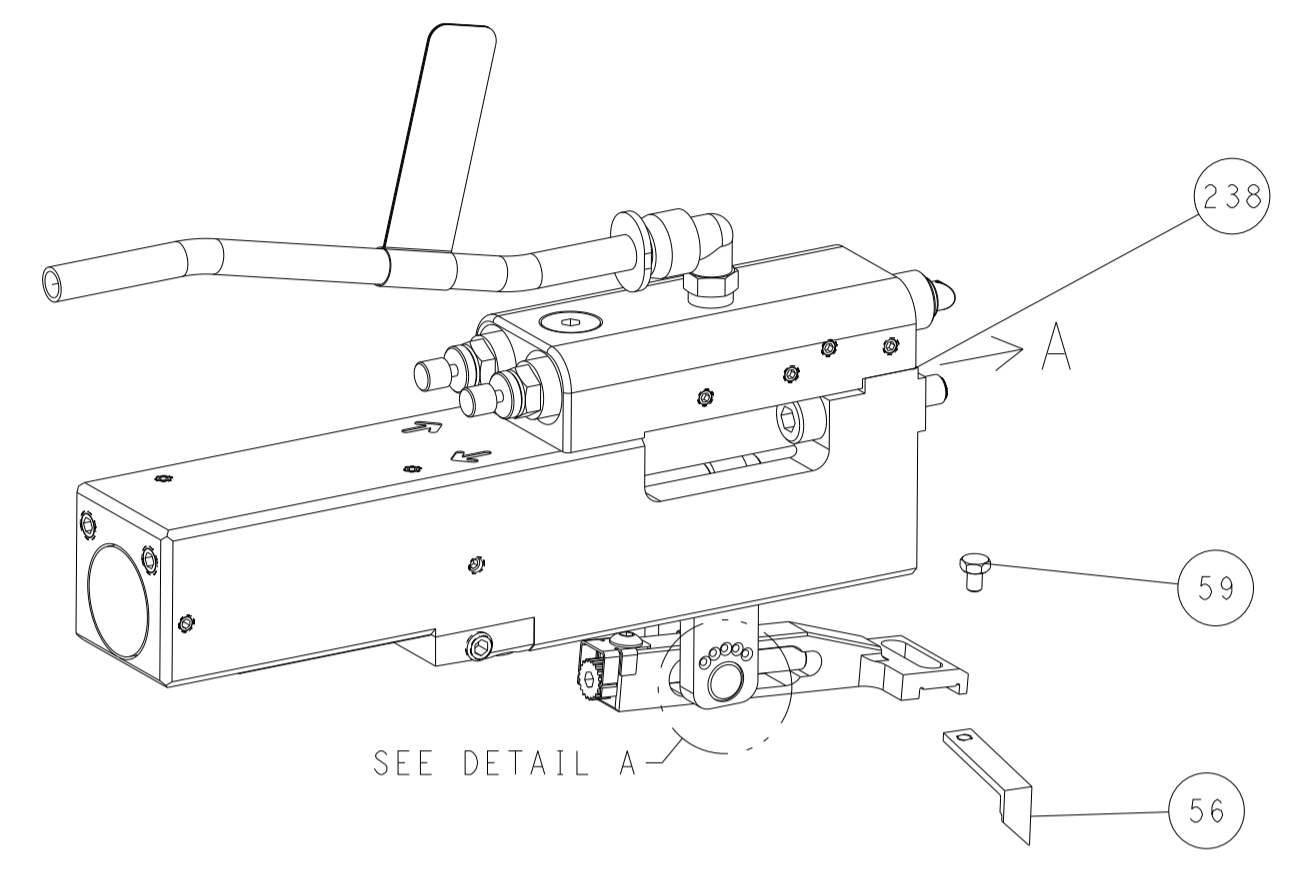
| | | | | |
|---|-----|---------------|-------------------------------------|-----|
| - | 1 | 2119082-9 | CAM, SNAIL, INSULATION ADJUSTMENT | 244 |
| - | 1 | 2079764-1 | WASHER, WAVE SPRING, CREST-TO-CREST | 243 |
| - | 1 | 2119083-1 | RETAINER, INSULATION DIAL | 242 |
| - | 1 | 7-18023-7 | SCR, SKT HD CAP M3 X 4.0 | 241 |
| - | 1 | 2844940-2 | AIR FEED MODULE | 238 |
| - | 1 | 993111-1 | PIN, SLOTTED SPRING 3.0 X 20.0 | 177 |
| - | 1 | 8-22280-7 | SPRING, COMPRESSION | 176 |
| - | 1 | 1752353-2 | GUIDE PIN, HOLDDOWN | 175 |
| - | 1 | 1901680-2 | GUIDE PIN, HOLDDOWN | 174 |
| - | REF | 994970-2 | COUNTER, MAGNETIC | 164 |
| - | 1 | 2119641-2 | FEED CAM, AIR FEED | 151 |
| - | 1 | 2168083-8 | SCR, SKT HD CAP, RoHS, M4 X 16 | 144 |
| - | 4 | 2168083-9 | SCR, SKT HD CAP, RoHS, M4 X 20 | 143 |
| - | 1 | 1-1803583-0 | APPLICATOR BASIC ASSEMBLY, SF | 141 |
| - | 1 | 1803516-2 | RAM ASSEMBLY, SF PACIFIC | 140 |
| - | 1 | 318563-1 | GUARD, FRONT CHIP | 119 |
| - | 1 | 2119955-1 | ASSY, LUBRICATOR, SIDE FEED | 113 |
| - | 1 | 2844908-1 | SCREW, LOCKING | 99 |
| - | 1 | 2844907-1 | POST, LOCKING | 98 |
| - | 1 | 1-455888-4 | SPACER, CRIMPER | 83 |
| - | 1 | 2-455888-2 | SPACER, CRIMPER | 82 |
| - | 2 | 2079383-4 | SCR, BHSC, RoHS (M4 X 8) | 79 |
| - | 1 | 1803096-1 | EXTENSION PLATE | 78 |
| - | 1 | 1803607-3 | DOCUMENTATION PACKAGE | 71 |
| - | 1 | 2119791-9 | DEPRESSOR, WIRE | 70 |
| - | 1 | 2119740-1 | TAG, IDENTIFICATION | 67 |
| - | 2 | 2168078-1 | SCREW, DRIVE, RH, RoHS, 2 x .188 | 66 |
| - | 1 | 5-18022-5 | SCR, HEX HD CAP, M4 X 6.0 | 59 |
| - | 1 | 1338683-8 | FEED PAWL | 56 |
| - | 1 | 1-5018030-0 | NUT, HEX, REG, RoHS, M3.5 | 52 |
| - | 1 | 2031311-1 | HOLDDOWN, TERMINAL | 51 |
| - | 1 | 2-1752354-3 | STANDOFF, HOLD-DOWN | 50 |
| - | 1 | 18023-9 | SCR, SKT HD CAP M4 X 6.0 | 49 |
| - | 1 | 1803602-2 | SCR, BHSC, RoHS (M8 X 40) | 41 |
| - | 1 | 1-1752356-0 | SUPPORT, TERMINAL | 34 |
| - | 2 | 2079383-5 | SCR, BHSC, RoHS (M4 X 20) | 33 |
| - | 2 | 2-2844962-6 | SPACER, CYLINDRICAL, STRIP GUIDE | 30 |
| - | 1 | 1-2844992-0 | ASSEMBLY, STRIP GUIDE | 29 |
| - | 1 | 1-455888-0 | SPACER, CRIMPER | 28 |
| - | 1 | 1320928-4 | STRIP GUIDE | 24 |
| - | 1 | 2168083-2 | SCR, SKT HD CAP, RoHS, M4 X 8.0 | 21 |
| - | 1 | 1-18028-2 | WASHER, FLAT, REG M4 | 20 |
| - | 1 | 2119533-5 | STRIPPER, SIDE FEED | 19 |
| - | 1 | 2119806-1 | INSERT, SHEAR | 13 |
| - | 1 | 3-22280-3 | SPRING, COMPRESSION | 12 |
| - | 1 | 1-356885-4 | STOP, SHEAR | 11 |
| - | 1 | 2119805-1 | SHEAR HOLDER, FRONT | 10 |
| - | 1 | 454276-5 | FLOATING SHEAR, FRONT | 9 |
| - | 1 | 1976051-4 | COMBINATION ANVIL | 8 |
| - | - | - | - | 7 |
| - | 1 | 1-2119757-0 | DEPRESSOR, SHEAR | 5 |
| - | 1 | 4-238011-5 | BLOCK, CRIMPER SPACER | 4 |
| - | 1 | 1-3-1633961-9 | CRIMPER, INSULATION F PREMIUM | 3 |
| - | 1 | 1-455888-8 | SPACER, CRIMPER | 2 |
| - | 1 | 5-1633305-3 | CRIMPER, WIRE PREMIUM | 1 |

| | | | | | | | |
|-------------|---------|--|---------|----------------------|---------|---|--|
| DIMENSIONS: | | TOLERANCES UNLESS OTHERWISE SPECIFIED: | | DWN Y. YIN 10APR2012 | | TE Connectivity Harrisburg, PA 17105-3608 | |
| mm | 0 PLC ± | 1 PLC ± | 2 PLC ± | 3 PLC ± | 4 PLC ± | NAME Ocean Side Feed Applicator | |
| MATERIAL | | FINISH | | APVD S. XI 10APR2012 | | SIZE CAGE CODE DRAWING NO RESTRICTED TO | |
| | | | | PRODUCT SPEC | | A1 00779 C=2151285 | |
| | | | | APPLICATION SPEC | | SCALE 1:2 SHEET 3 OF 4 REV G | |
| | | | | WEIGHT | | Customer Accessible Production Drawing | |

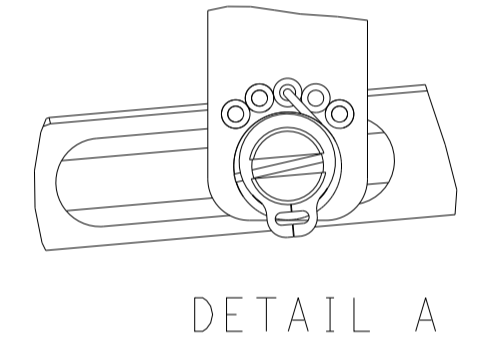
| LOC | DIST | REVISIONS | | | |
|-----|------|-------------|------|-----|------|
| P | LTN | DESCRIPTION | DATE | DMN | APVD |
| A | 66 | SEE SHEET 1 | - | - | - |

FEED TYPE

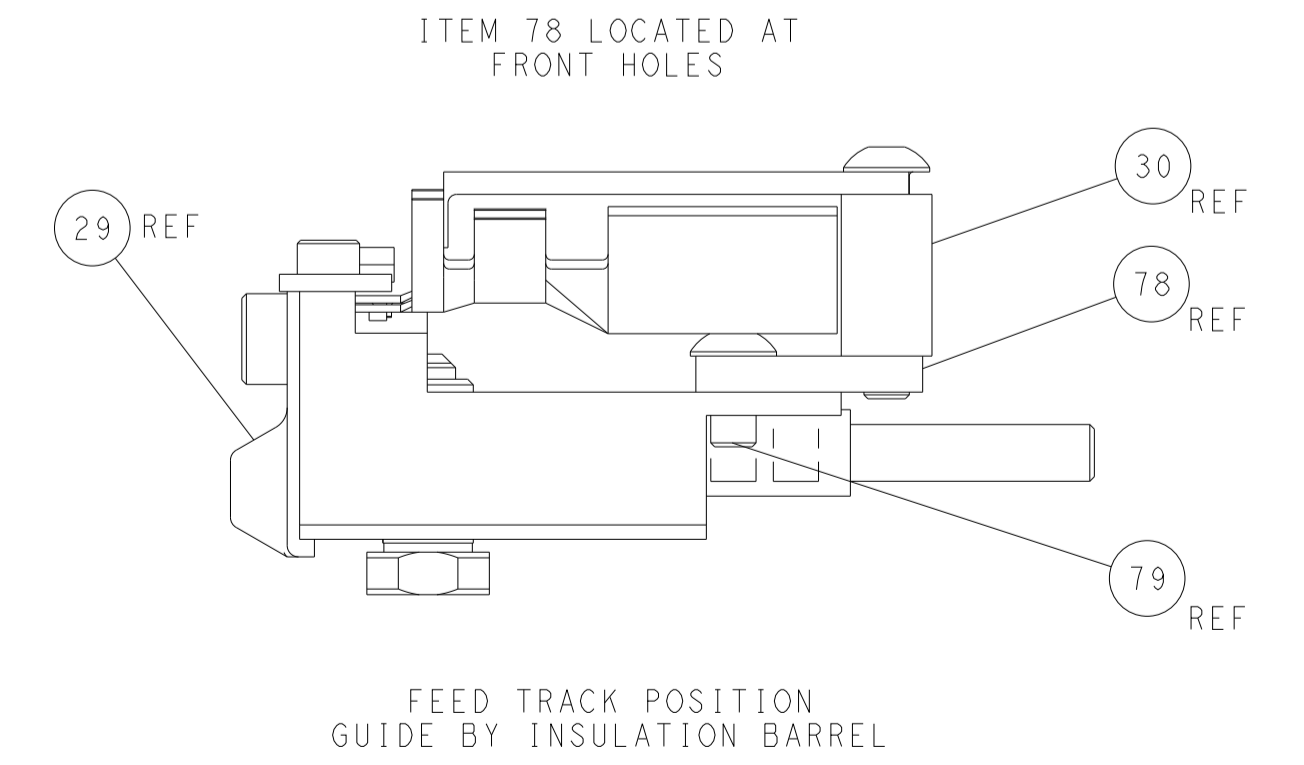
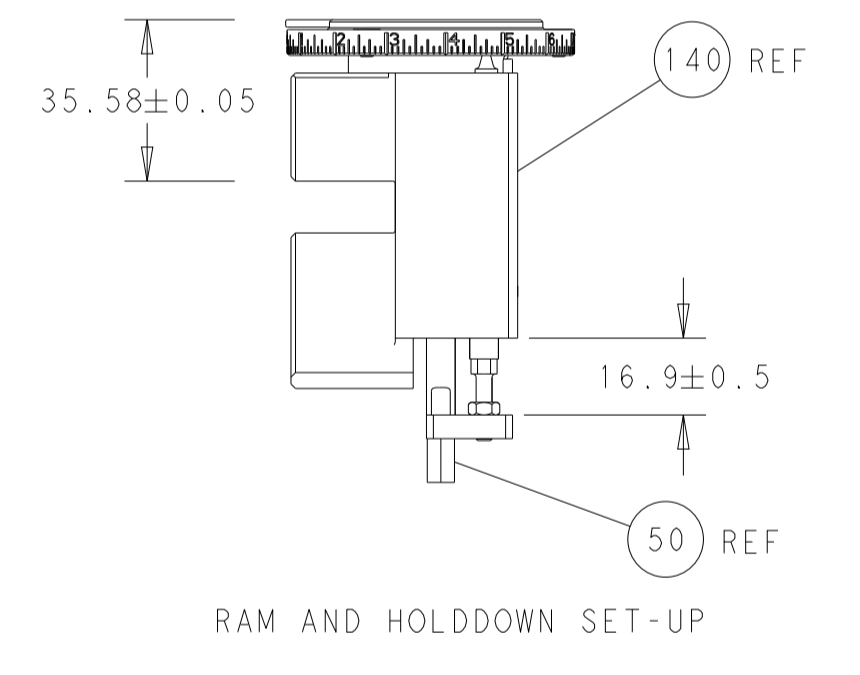
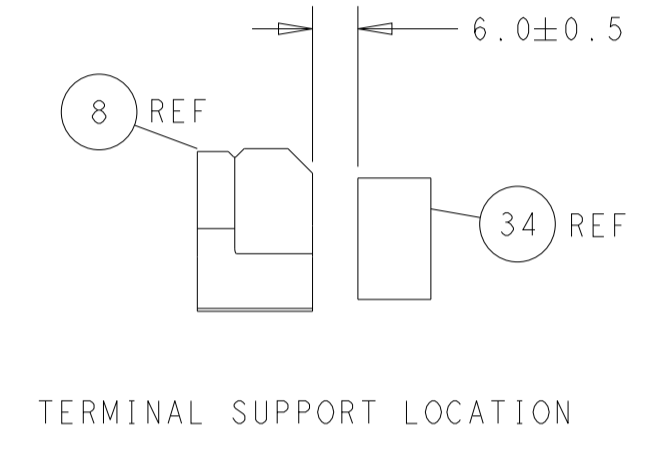
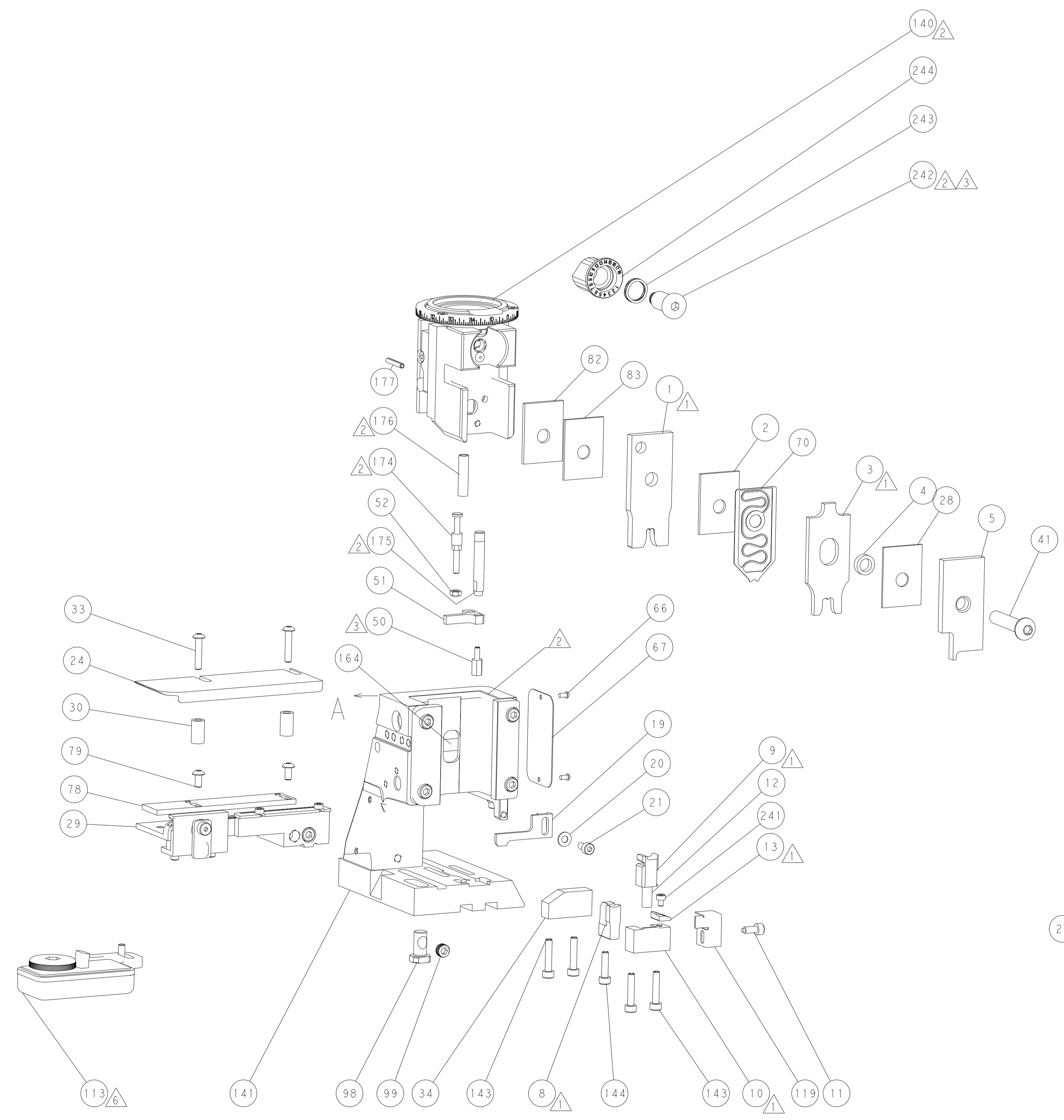
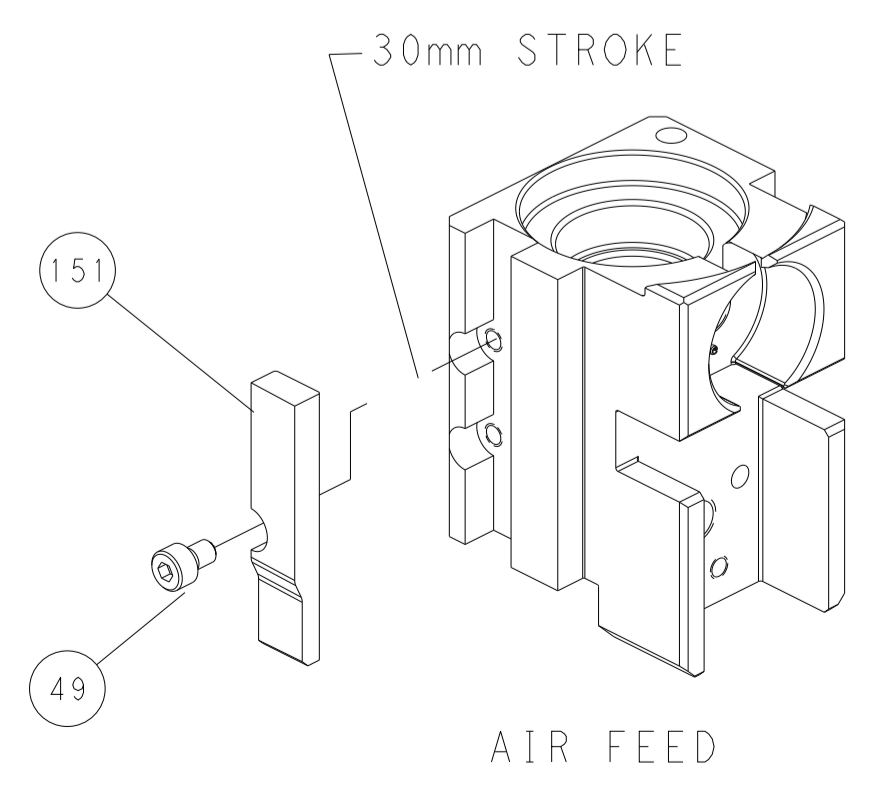
PNEUMATIC



FEED SPRING SETTING POSITION (SHOWN FROM REAR SIDE)



CAM POSITION



PACIFIC VERSION
 Shown on sheets 3 of 4 & 4 of 4
 (Atlantic version shown on sheets 1 of 4 & 2 of 4)

| | | | | | | | |
|--|---------------|--|---------|--|---------|---|--|
| DIMENSIONS: | | TOLERANCES UNLESS OTHERWISE SPECIFIED: | | DWG Y. YIN 10APR2012 | | TE Connectivity Harrisburg, PA 17105-3608 | |
| mm | 0 PLC ± | 1 PLC ± | 2 PLC ± | 3 PLC ± | 4 PLC ± | NAME Ocean Side Feed Applier | |
| ANGLES | FINISH | | | APVD S. XI 10APR2012 | | SIZE CAGE CODE DRAWING NO A1 00779 C-2151285 | |
| MATERIAL | RESTRICTED TO | | | WEIGHT | | SCALE 1:2 SHEET 4 OF 4 REV G | |
| Customer Accessible Production Drawing | | | | Customer Accessible Production Drawing | | | |