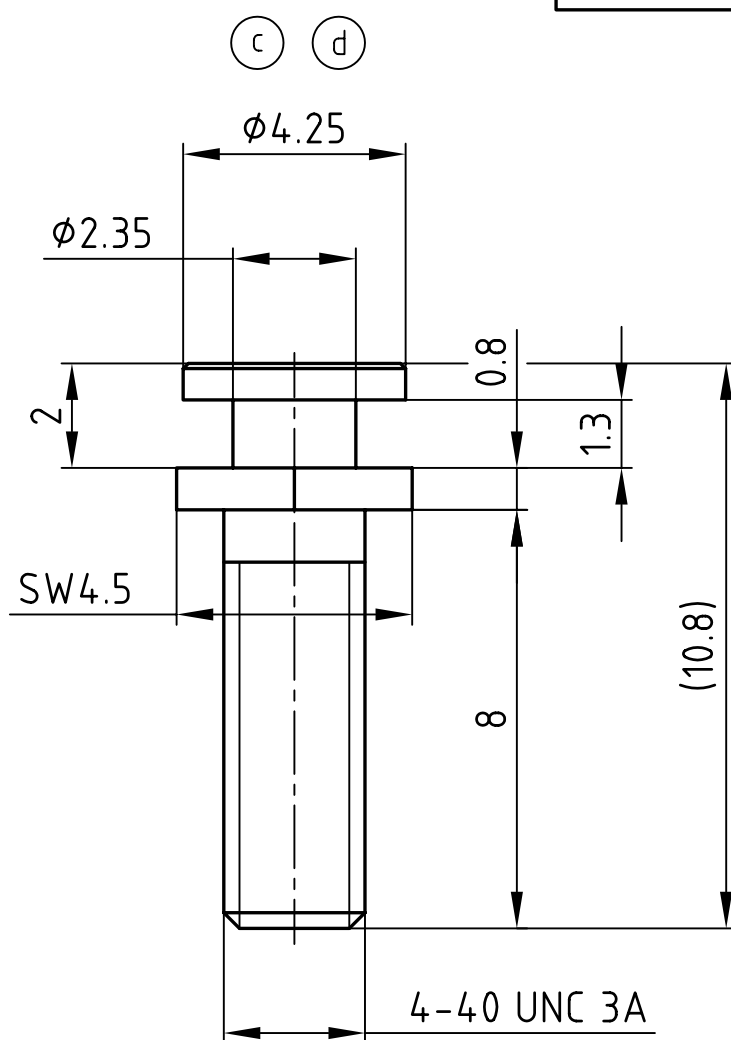
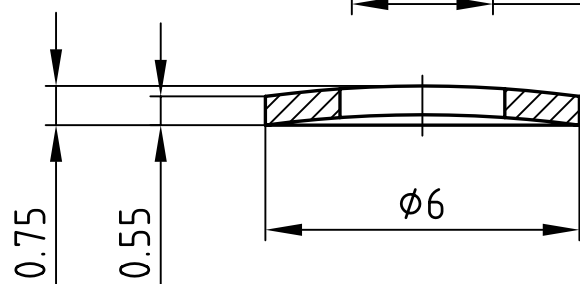


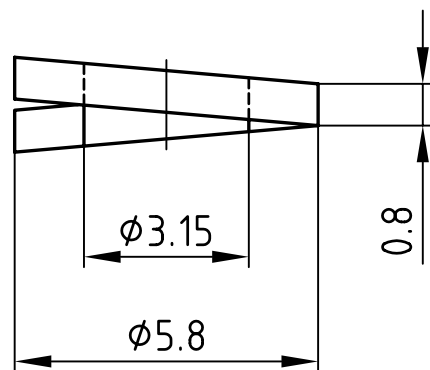
used for: D-SUB



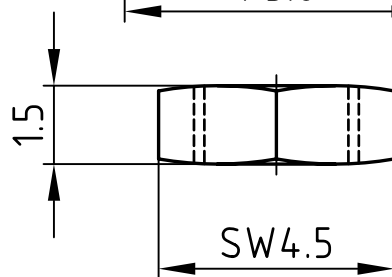
(b) LOCKING SCREW



WASHER



SPRING WASHER



NUT

- 1 SET CONSISTS OF:
 2 x LOCKING SCREW
 2 x NUT
 4 x WASHER
 2 x SPRING WASHER

APPROVAL # FREIGABE # DEBLOCAGE # AUTORIZACION # APPROVAL	
CUSTOMER APPROVAL DATE:	
NAME:	TITLE:
COMPANY NAME:	
APPROVAL # FREIGABE # DEBLOCAGE # AUTORIZACION # APPROVAL	



NOTES:

- LOCKING SCREW: 4-7µm Sn over 2-3µm Cu
- NUT: 4-7µm Sn over 2-3µm Cu
- WASHER: 4-7µm Sn over 2-3µm Cu
- SPRING WASHER: 4-7µm Sn over 2-3µm Cu

THIS DRAWING MAY NOT BE COPIED OR REPRODUCED IN ANY WAY, AND MAY NOT BE PASSED ON TO A THIRD PARTY WITHOUT WRITTEN PERMISSION.
 OWNERSHIP AND COPYRIGHT OF CONEC GmbH
 DO NOT ALTER CAD DRAWING BY HAND

tolerance			DIN ISO 2768-m			dim. in mm		
1995	date	name						
drawn	18.07.	Mickenbecker						
appd.	18.07.	Barcinski						
1 x d	Ä 3365	02.06.2009	Lehmen.	norm				
1 x c	Ä 2689	20.03.2007	E. Mick.	d-old				
1 x b	Ä 2535	18.07.2006	Lehmen.					
a	Origin							
rev.	description	date	name					



scale:	5:1		
material:	9SMnPb28K		
title:	LOCKING SCREW with accessory D-SUB 9-50pos.		
dwg no:	AutoCAD 2006	DIN-A	4
	16V1M7A	sh: 1/1	
part no:	160X10209X		