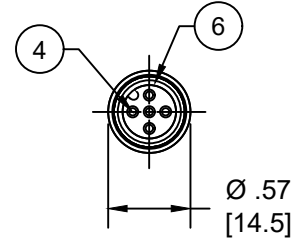
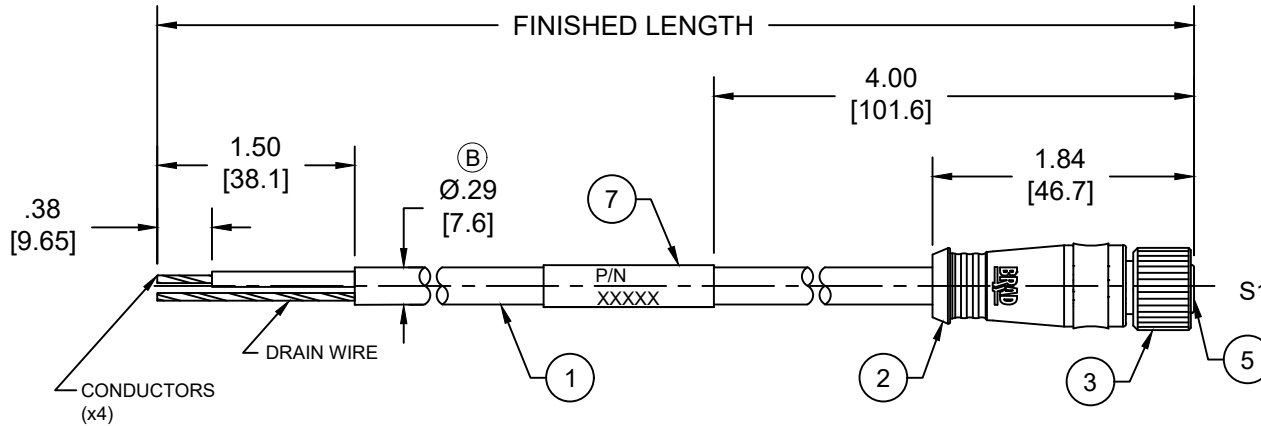
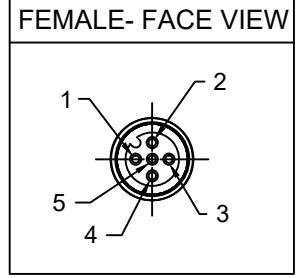
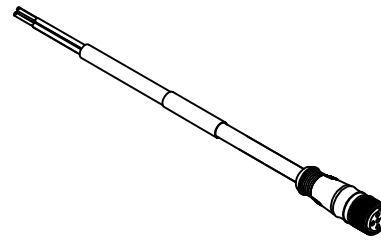


| MATERIAL NUMBER | ENGINEERING NUMBER | FINISHED LENGTH |
|-----------------|--------------------|-----------------|
| 1300270047 | DND20A-M005 | 0.5M [1FT 8 IN] |
| 1300270057 | DND20A-M150 | 15M [49FT 3 IN] |
| 1300270158 | DND20A-M300 | 30M [98FT 5 IN] |

PART NUMBER LEGEND (B)
DND20A-M005

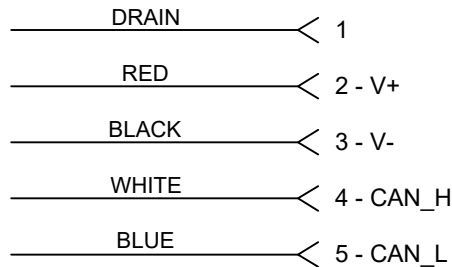
FINISHED LENGTH:
M005 = 0.5 METER
M010 = 1 METER
M100 = 10 METER



NOTES:

- MATERIAL: AS NOTED
- FINISH: AS NOTED
- ELECTRICAL:
VOLTAGE: 250V AC/DC
CURRENT: 4 AMPS
- TEMP RATING: -20°C TO +80°C
- PROTECTION: IP67 (WHEN MATED)
- COUPLING THREAD: M12 X 1
- UL LISTED FILE: E152210 (B)
CSA CERTIFIED FILE: LR6837
- ALL DIMENSIONS ARE FOR REFERENCE UNLESS TOLERANCED OR NOTED OTHERWISE

SCHEMATIC



(B) CABLE LENGTH TOLERANCES

| | |
|-------------------------|-------------------------|
| <.3M [1FT] | +19mm-0 [+.75in-0] |
| .3 - .9M [1 - 3FT] | +44.5mm-0 [+1.75in-0] |
| .9 - 1.8M [3 - 6FT] | +55.6mm-0 [+2.19in-0] |
| 1.8 - 3.7M [6 - 12FT] | +88.9mm-0 [+3.50in-0] |
| 3.7 - 7.3M [12 - 24FT] | +165.1mm-0 [+6.50in-0] |
| 7.3-14.6M [24 - 48FT] | +317.5mm-0 [+12.50in-0] |
| 14.6 - 30.5M [48-100FT] | +622.3mm-0 [+24.50in-0] |
| OVER 30M [100FT] | +2% OF FINISHED LENGTH |

| 7 | WRAP LABEL | VINYL | BLACK/YELLOW |
|------|-------------------------|---------------|------------------|
| 6 | O-RING | NITRILE | RED |
| 5 | INSERT | NYLON | BLACK |
| 4 | SOCKET CONTACT | COPPER ALLOY | GOLD OVER NICKEL |
| 3 | COUPLNG NUT | ZINC DIE CAST | BLACK E-COATED |
| 2 | OVERMOLD | TPC | GRAY |
| 1 | CABLE #22 AWG DEVICENET | PVC JACKET | GRAY |
| ITEM | COMPONENT | MATERIAL | FINISH |

| | | | | |
|--------------------|---|-----------------|--|------------------------------|
| FUNCTIONAL SYMBOLS | THIS DRAWING CONTAINS INFORMATION THAT IS PROPRIETARY TO MOLEX ELECTRONIC TECHNOLOGIES, LLC AND SHOULD NOT BE USED WITHOUT WRITTEN PERMISSION | | | |
| | DIMENSION UNITS | SCALE | CURRENT REV DESC: ITEM #2 WAS PVC & ITEM #7 WAS PLASTIC FILM. ADDED UL, CSA, O-RING, CABLE DIA, PN LEGEND & TOL CHART. MODIFIED PN TABLE | |
| DIVISIONAL SYMBOLS | INCH/MM | NTS | GENERAL TOLERANCES (UNLESS SPECIFIED) | |
| | | | mm | INCH |
| FUNCTIONAL SYMBOLS | 4 PLACES | ±---- | ±---- | EC NO: 704134 |
| | 3 PLACES | ±---- | ±---- | DRWN: ABENJAMINLW 2021/06/02 |
| | 2 PLACES | ±---- | ±---- | CHK'D: RSTONE 2022/04/27 |
| | 1 PLACE | ±---- | ±---- | APPR: BWOODMAN 2022/05/04 |
| DIVISIONAL SYMBOLS | 0 PLACES | ±---- | ±---- | INITIAL REVISION: |
| | ANGULAR TOL ± ---- ° | | DRWN: TWOLDEGE 2010/01/06 | |
| FUNCTIONAL SYMBOLS | DRAFT WHERE APPLICABLE MUST REMAIN WITHIN DIMENSIONS | | THIRD ANGLE PROJECTION | DRAWING |
| | | | | A-SIZE |
| | | SERIES | MATERIAL NUMBER | CUSTOMER |
| | | 130027 | SEE CHART | GENERAL MARKET |
| | | DOCUMENT NUMBER | | DOC TYPE/DOC PART/REVISION |
| | | SD-130027-007 | | PSD 001 B |
| | | SHEET NUMBER | | 1 OF 1 |