



**Application Note: 48V-BMS-AN01 – General Description**

# **48V-BMS**

**AN01 – General Description**

## Table of Contents

1	General Description .....	3
1.1	Kit Content .....	3
2	Getting Started .....	3
3	Hardware Description.....	4
4	Configuration.....	5
4.1	Cell connection.....	5
4.2	Current path connection.....	5
5	Software .....	6
5.1	Main Tab .....	6
6	Board Schematics, Layout and BOM.....	9
7	Ordering & Contact Information .....	13
8	RoHS Compliant & ams Green Statement .....	14
9	Copyrights & Disclaimer.....	15

## Revision History

Revision	Date	Owner	Description
1.0	06.10.2015	gheh	Initial release

## 1 General Description

This document describes the 48V BMS Board.

The 48V-BMS is a demonstrator solution for monitoring and safely operating a 48V battery stack such as the ones used in modern car supply nets and in many other mobility applications like e-bikes and scooters.

The board incorporates:

- A cell supervision and balancing portion for up to 14 series connected cells
- Pack current and voltage monitoring via a copper shunt on the + terminal of the battery
- A N-mosFET disconnect switch on the + side of the battery
- A CAN communication interface for status messaging

The board is meant to be used in conjunction with the USB Interface Board and the 48V-PC GUI however you can connect the CAN Interface to any other CAN compatible device and evaluate the status messages there.

### 1.1 Kit Content

The kit consists of the dual layer PCB 48V-BMS and an eSATA Cable which is used to connect to the USB-Interface Board board.

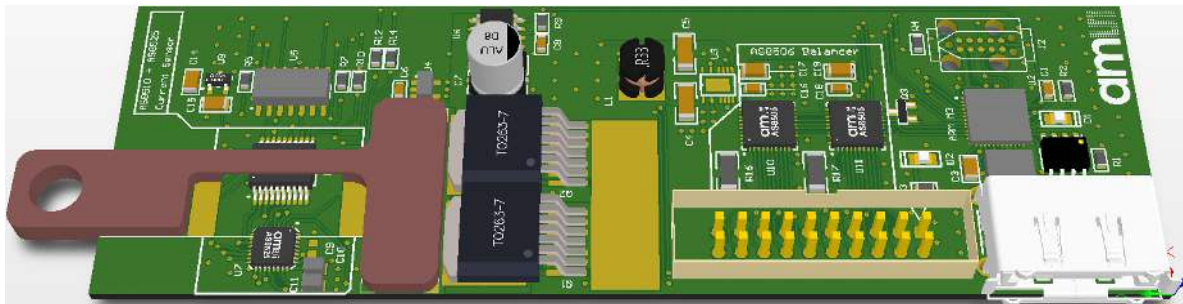


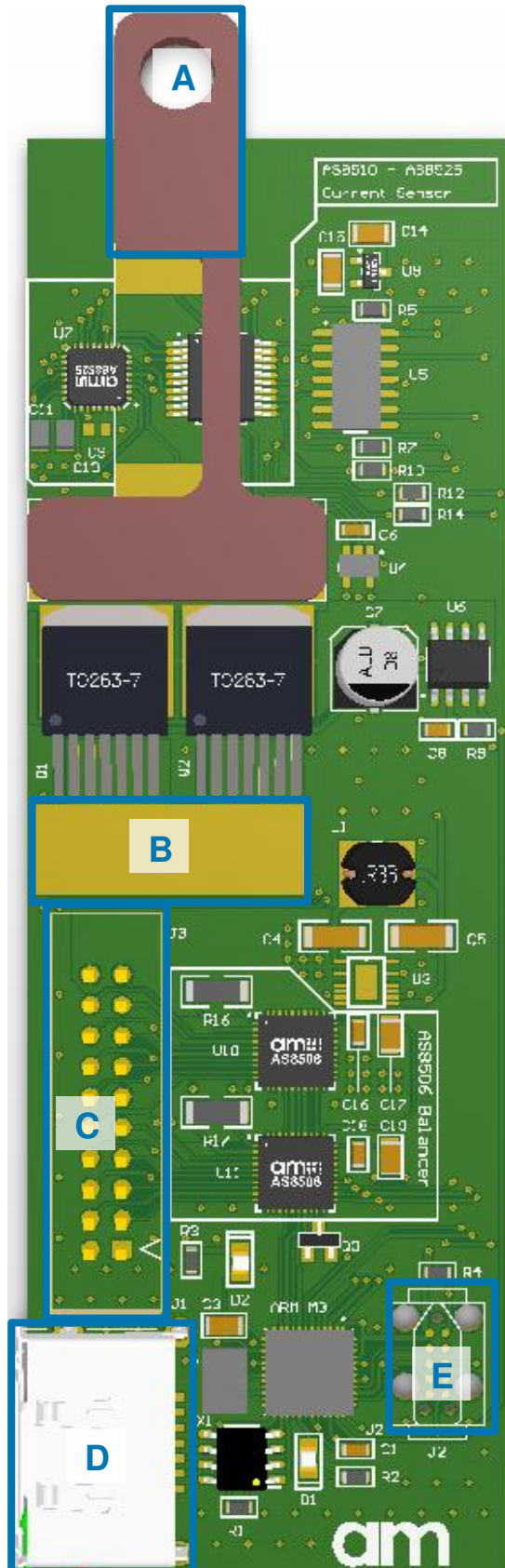
Figure 1: 48V-BMS Board

## 2 Getting Started

To operate this Board you should at first download and install the 48V-BMS GUI from here:

<http://ams.com/eng/Support/Demoboards/Power-Management/Battery-Stack-Monitor-Balancer/AS85xx-Ref-Design-48V>

Once the software is installed you can connect the USB Interface Board to the 48V-BMS via the provided eSATA cable and afterwards connect the USB Interface Board to the PC via the USB cable.



### 3 Hardware Description

The 48V-BMS board is powered via the cell connector J3. A dc-dc converter steps down the input voltage to 5V which is used to power most of the circuitry. Current is routed through connectors A & B. They form a high current sensing path on the + side of the load circuit. Current is measured through the small voltage drop across the thin strip of copper on top of the AS8510 sensing chip. The copper resistance change is compensated in software. Balancing is done passively via two AS8506 chips using discharge resistors.

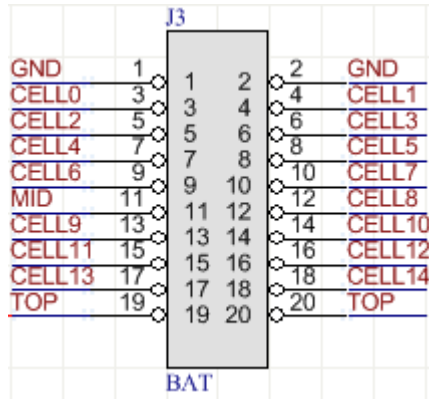
Figure 2: PCB Top Side Diagram

Table 1: Connection Diagram

Label	Name	Designator	Info
A	+Terminal		+ Connection to battery
B	+ Switched Terminal		+ Connection to load
C	Cell Connector	J3	Connection for cell measurement and balance
D	CAN	J1	Standard CAN Interface
E	JTAG/SWD	J2	Tag-connect Adapter for programming

## 4 Configuration

### 4.1 Cell connection



**Figure 3: Battery Connector**

Cells should be connected according to the pinout of the Battery plug. There are 3 GND (2xGND + Cell0) 2 Mid-Stack (Cell7 + MID) and 3 VPP (Cell14 + 2xTOP) connections respectively which shall be tied together directly at the battery.

### 4.2 Current path connection

The high current path runs through connectors A & B. The maximum current that the board can handle in this configuration is 100A. The trip current limit can be set via Software and is set to 60A by default.

## 5 Software

The Software Comprises of 4 different Tabs with different functionality which will be subsequently explained. When the software is started it will automatically connect to the USB Interface Board and start listening for incoming CAN Messages. A Green USB and CAN Signal in the bottom right Corner indicate a successful connection to the USB Board.

### 5.1 Main Tab

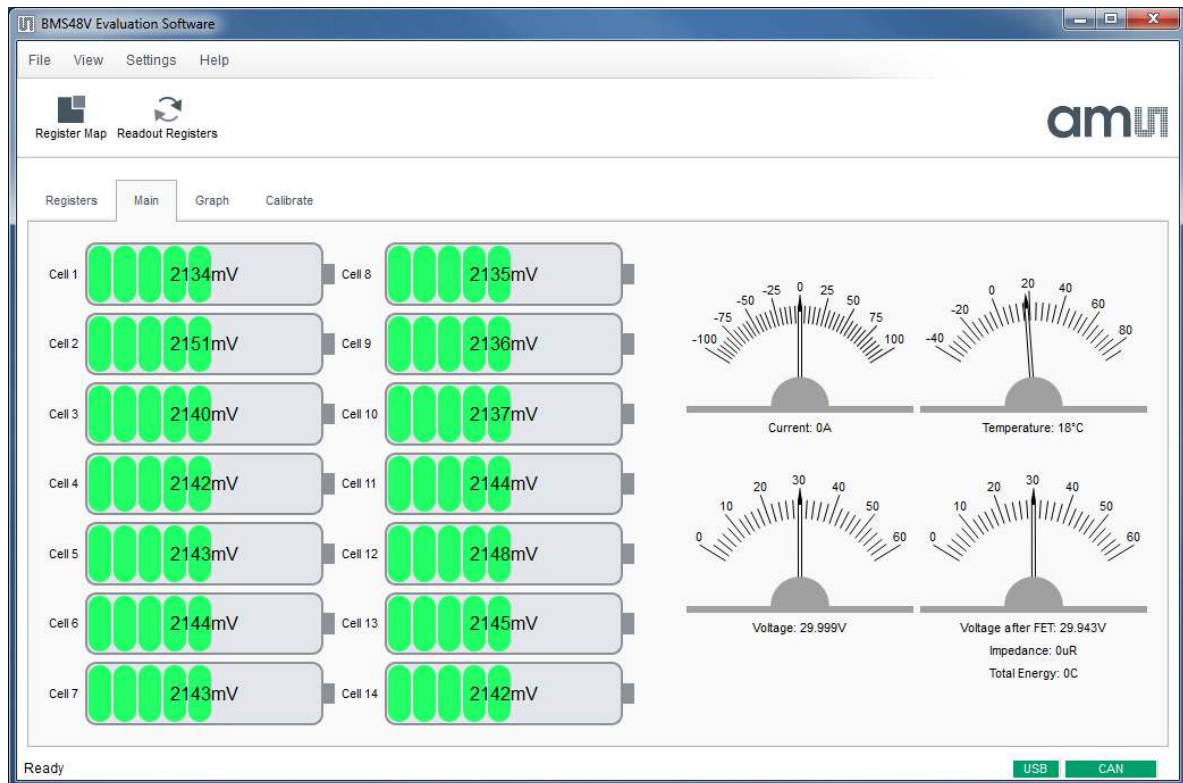
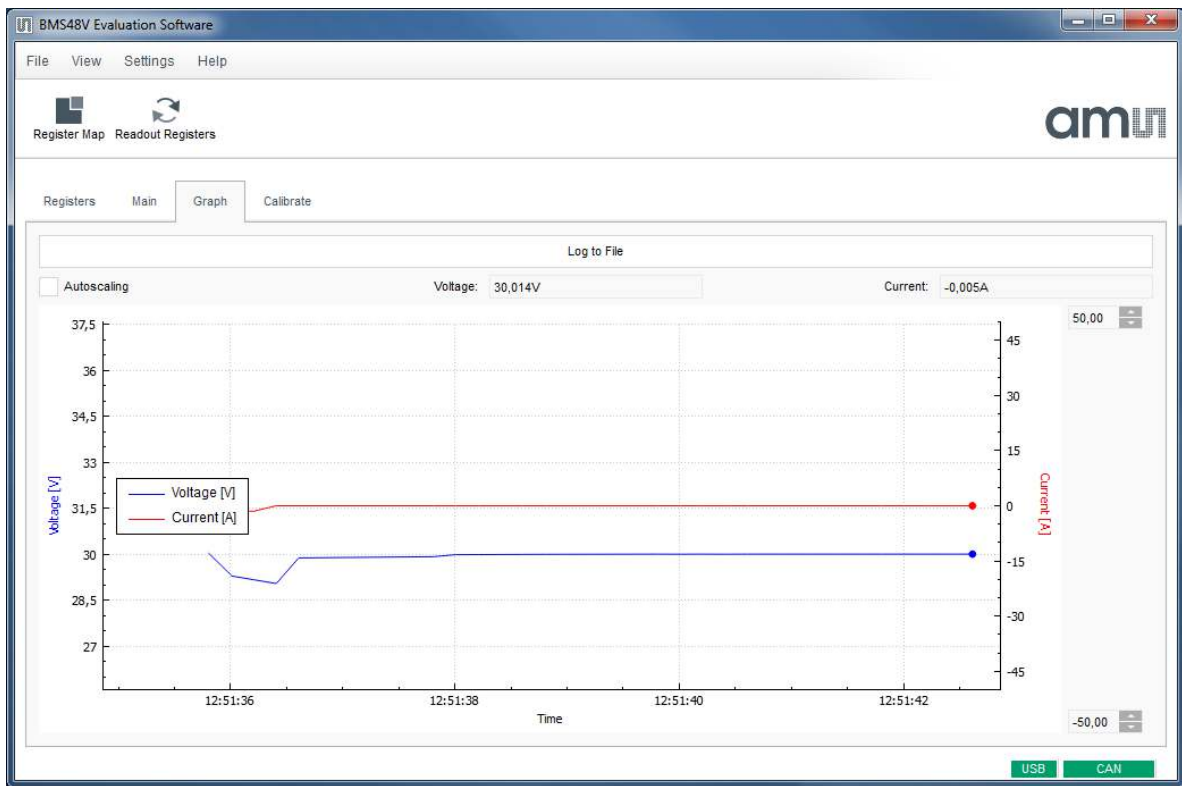


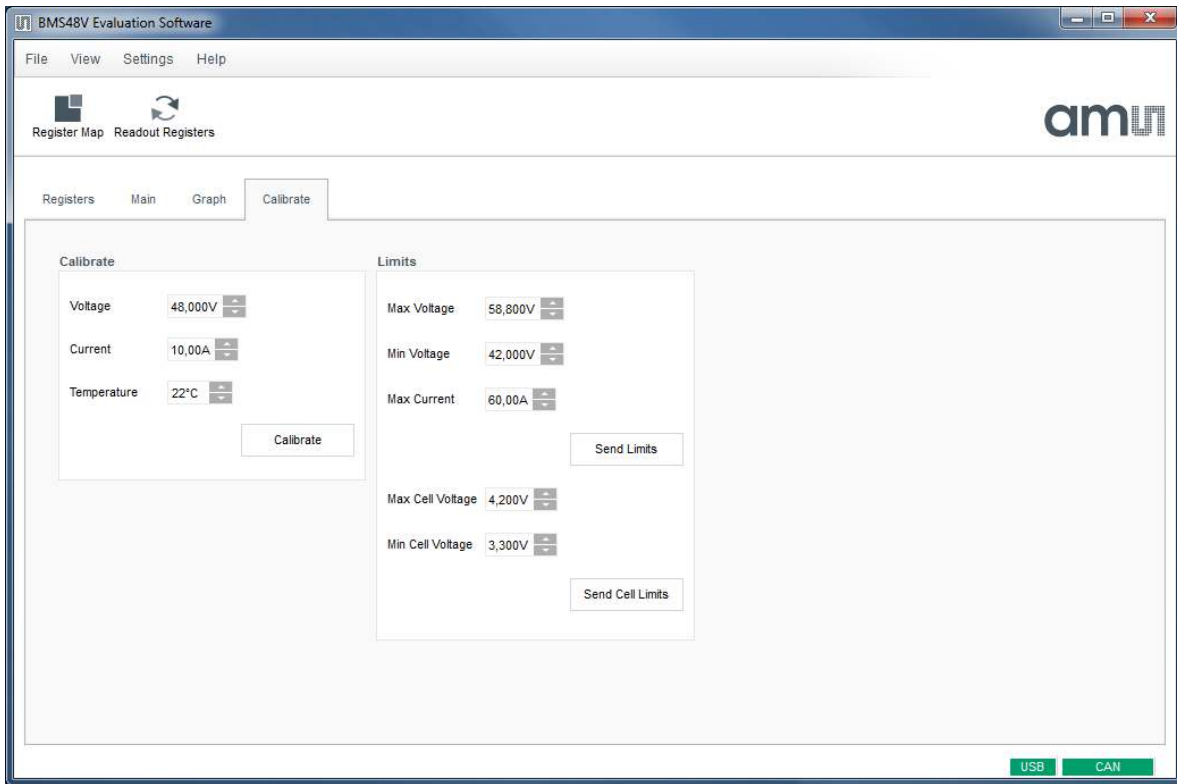
Figure 4: GUI Main Tab

This is the default window. It displays all measured battery parameters including cell voltages, pack voltage before and after the FET switch, temperature and total Current. It also display info messages like when the balancing is active or if any of the min/max parameters has been reached and the FET switch has been turned off for safety protection.



**Figure 5: GUI Graph Tab**

The graph tab gives a graphical representation of the measured pack current & voltage and allows you to log these measurements to a file.



**Figure 6: GUI Calibrate Tab**

The Calibrate tab allows calibration of the current and voltage measurement. It also allows you to set the pack as well as the cell voltage limits. These limits are stored in non-volatile memory on the 48V BMS Board.

To redo the calibration apply a known pack voltage and load current to the BMS Board. Type in these known values in the appropriate fields and click on the calibrate button. The Board will do a measurement and calculate the required calibration coefficients. These are immediately used and you can see the effect in the Main Tab.





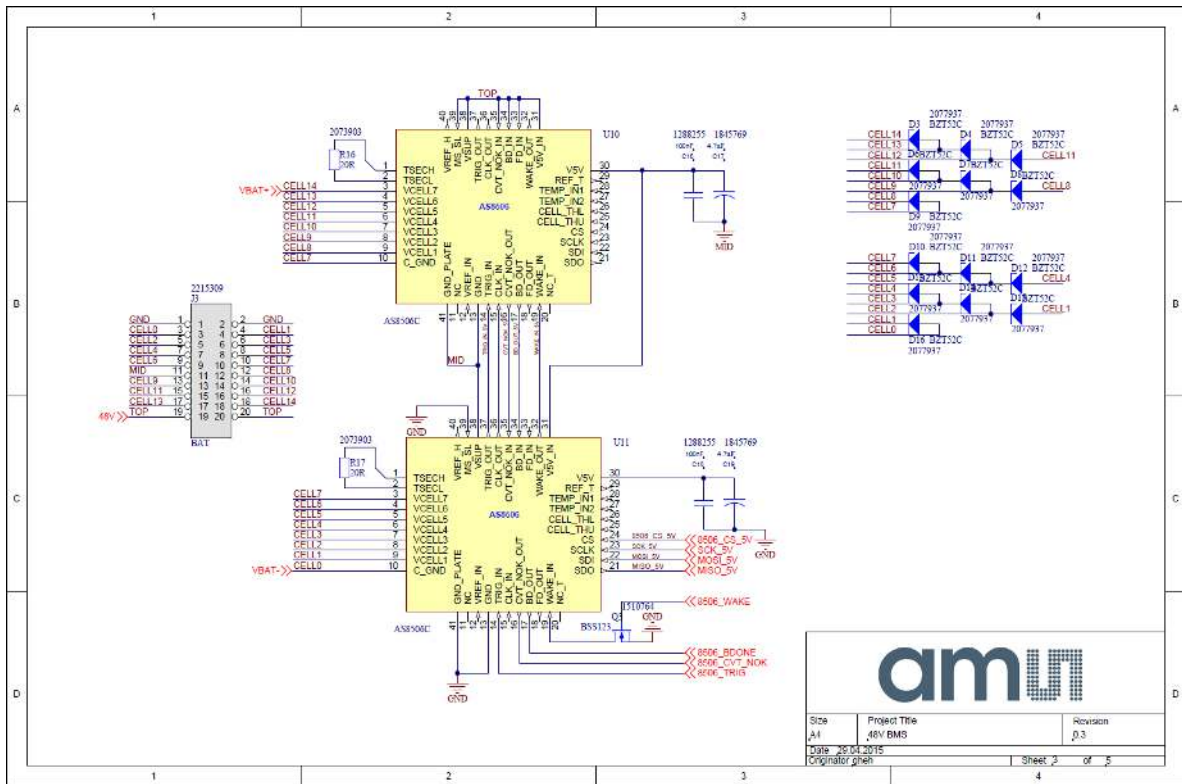


Figure 7: Schematics

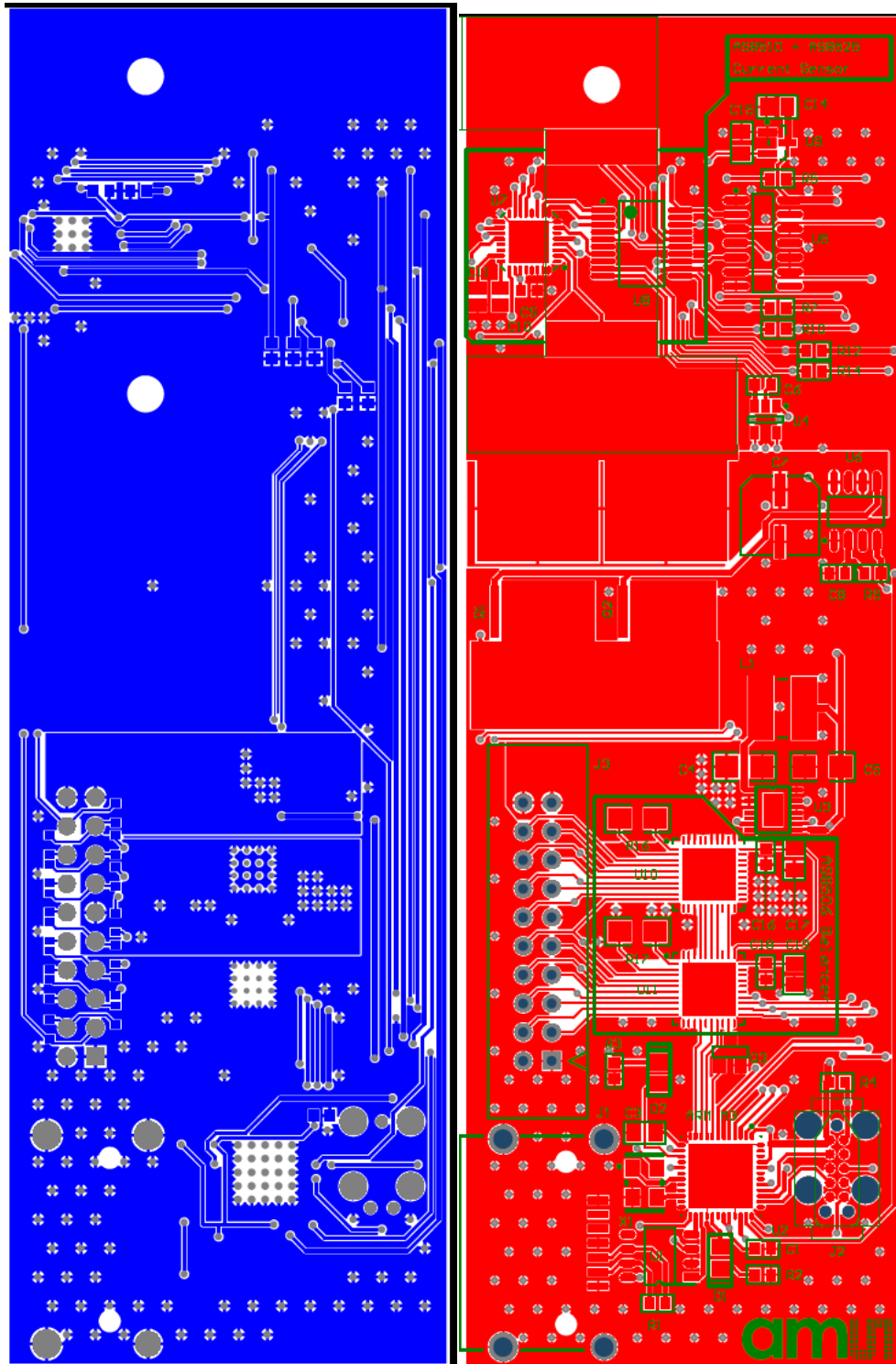


Figure 8: Top/Bottom PCB Side

48V-BMS-AN01  
General Description



Bill of Materials			48V BMS					
Company:		ams AG						
Originator:		gheh						
PCB Name:		48V BMS						
PCB Version:		0.3						
Report Date:		29.04.2015						
#	Designator	Comment	Name Error:Component	Manufacturer	Manufacturer Part Number	Supplier 1	Supplier Part Number 1	Quantity
1	C1	100nF		MULTICOMP	MC0603F104Z500CT	Farnell	1759123	1
2	C10	1uF		KEMET	C0805C105Z4VACTU	Farnell	9227806	1
3	C11	1uF		KEMET	C0805C105Z4VACTU	Farnell	9227806	1
4	C12	100nF		MULTICOMP	MC0603B104K160CT	Farnell	1759016	1
5	C13	100nF		MULTICOMP	MC0603B104K160CT	Farnell	1759016	1
6	C14	1uF		KEMET	C0805C105Z4VACTU	Farnell	9227806	1
7	C15	1uF		KEMET	C0805C105Z4VACTU	Farnell	9227806	1
8	C16	100nF		KEMET	C0603C104K5RACTU	Farnell	1288255	1
9	C17	4.7uF		MURATA	GRM187R1A475KA73L	Farnell	1845769	1
10	C18	100nF		KEMET	C0603C104K5RACTU	Farnell	1288255	1
11	C19	4.7uF		MURATA	GRM187R1A475KA73L	Farnell	1845769	1
12	C2	100nF		MULTICOMP	MC0603F104Z500CT	Farnell	1759123	1
13	C3	4u7 6V		JOHANSON DIELECTRICS	6R3R15X475KV4E	Farnell	1886096RL	1
14	C4	1uF 100V		MULTICOMP	MC1206B105K101GT	Farnell	2320676	1
15	C5	10uF		KEMET	C1206F105Z8VACTU	Farnell	9227803	1
16	C6	100nF		MULTICOMP	MC0603B104K160CT	Farnell	1759016	1
17	C8	100nF		MULTICOMP	MC0603B104K160CT	Farnell	1759016	1
18	C9	220nF		TDK	C1608X7R1H224K20DAB	Farnell	2346506	1
19	D1	LED_0805		MULTICOMP	DV3-0803	Farnell	1716765	1
20	D10	BZ752C		DIODES INC.	BZ752C5V6T-7	Farnell	2077937	1
21	D11	BZ752C		DIODES INC.	BZ752C5V6T-7	Farnell	2077937	1
22	D12	BZ752C		DIODES INC.	BZ752C5V6T-7	Farnell	2077937	1
23	D13	BZ752C		DIODES INC.	BZ752C5V6T-7	Farnell	2077937	1
24	D14	BZ752C		DIODES INC.	BZ752C5V6T-7	Farnell	2077937	1
25	D15	BZ752C		DIODES INC.	BZ752C5V6T-7	Farnell	2077937	1
26	D16	BZ752C		DIODES INC.	BZ752C5V6T-7	Farnell	2077937	1
27	D2	LED_0805		MULTICOMP	DV3-0803	Farnell	1716765	1
28	D3	BZ752C		DIODES INC.	BZ752C5V6T-7	Farnell	2077937	1
29	D4	BZ752C		DIODES INC.	BZ752C5V6T-7	Farnell	2077937	1
30	D5	BZ752C		DIODES INC.	BZ752C5V6T-7	Farnell	2077937	1
31	D6	BZ752C		DIODES INC.	BZ752C5V6T-7	Farnell	2077937	1
32	D7	BZ752C		DIODES INC.	BZ752C5V6T-7	Farnell	2077937	1
33	D8	BZ752C		DIODES INC.	BZ752C5V6T-7	Farnell	2077937	1
34	D9	BZ752C		DIODES INC.	BZ752C5V6T-7	Farnell	2077937	1
35	J3	8AT		AMPHENOL	TR21120A1S1000BLJ	Farnell	2215305	1
36	R1	120R		YAGEO (PHYCOMP)	RC2063FR-07120RL	Farnell	9238379	1
37	R10	6K8		MULTICOMP	MCMR05X6801FTL	Farnell	2073349	1
38	R11	10K		MULTICOMP	MCMR05X1002FTL	Farnell	2073349	1
39	R12	6K8		MULTICOMP	MCMR05X6801FTL	Farnell	2073349	1
40	R13	10K		MULTICOMP	MCMR05X1002FTL	Farnell	2073349	1
41	R14	6K8		MULTICOMP	MCMR05X6801FTL	Farnell	2073349	1
42	R15	10K		MULTICOMP	MCMR05X1002FTL	Farnell	2073349	1
43	R16	20R		MULTICOMP	MCMR12X200 JTL	Farnell	2073903	1
44	R17	20R		MULTICOMP	MCMR12X200 JTL	Farnell	2073903	1
45	R2	470R		MULTICOMP	MC0603W06035470R	Farnell	9332146	1
46	R3	470R		MULTICOMP	MC0603W06035470R	Farnell	9332146	1
47	R4	10K		MULTICOMP	MCMR05X1002FTL	Farnell	2073349	1
48	R5	6K8		MULTICOMP	MCMR05X6801FTL	Farnell	2073349	1
49	R6	10K		MULTICOMP	MCMR05X1002FTL	Farnell	2073349	1
50	R7	6K8		MULTICOMP	MCMR05X6801FTL	Farnell	2073349	1
51	R8	10K		MULTICOMP	MCMR05X1002FTL	Farnell	2073349	1
52	R9	10K		MULTICOMP	MCMR05X1002FTL	Farnell	2073349	1
53	BT	SHUNT_LL						not populated
54	U1	CAN-TRC		ON SEMICONDUCTOR	NCV7342D10R2G	Farnell	2382435	1
55	U10	AS8506				ams	AS8506C	1
56	U11	AS8506				ams	AS8506C	1
57	U2	MB98B24K				AMB		1
58	UR	LT1910		LINEAR TECHNOLOGY	LT1910ES8PBF	Farnell	4273493	1
59	X1	CKO_7C_4MHz		TXC	7C-4.000MBA-T	Farnell	1842040	1
60	UR	AS136D_ASKG				ams	AS136D-33-T	1
61	UR	AS8510_new				ams		1
62	U3	LTC3639		Linear Technology	LTC3639EMCBPBF	Digi-Key	LTC3639EMCBPBF-ND	1
63	UR	AS8801				ams		1
64	UR	AS8525_new				ams		1
65	J1	eSATA		Moxy Inc	0473790 100	Farnell	1428280	1
66	Q1			INTERNATIONAL RECTIFIER	AURPS3006-7P	Farnell	2148059	1
67	Q2			INTERNATIONAL RECTIFIER	AURPS3006-7P	Farnell	2148059	1
68	Q3	80S123		NXP	80S123	Farnell	4107164	1
69	Q7	10uF		RAMASONIC	888FK1J100P	Farnell	8596008	1
70	US	74HC125		NXP	74HC125D	Farnell	1201305	1
71	L1	100uH		MULTICOMP	MC2054-101KU	Farnell	1864128	1
72	J2	TC2050-JTAG						not populated
Approved			Notes					72

Figure 9: BOM

## 7 Ordering & Contact Information

SAP number	Ordering Code	Description
#990600868	REFERENCE DESIGN 48V	48V BMS Board

**Buy our products or get free samples online at:**

[www.ams.com/ICdirect](http://www.ams.com/ICdirect)

**Technical Support is available at:**

[www.ams.com/Technical-Support](http://www.ams.com/Technical-Support)

**For further information and requests, e-mail us at:**

[ams\\_sales@ams.com](mailto:ams_sales@ams.com)

**For sales offices, distributors and representatives, please visit:**

[www.ams.com/contact](http://www.ams.com/contact)

### Headquarters

ams AG  
Tobelbaderstrasse 30  
8141 Unterpremstaetten  
Austria, Europe

Tel: +43 (0) 3136 500 0

Website: [www.ams.com](http://www.ams.com)

## 8 RoHS Compliant & ams Green Statement

### RoHS

The term RoHS compliant means that ams products fully comply with current RoHS directives. Our semiconductor products do not contain any chemicals for all 6 substance categories, including the requirement that lead not exceed 0.1% by weight in homogeneous materials. Where designed to be soldered at high temperatures, RoHS compliant products are suitable for use in specified lead-free processes.

### ams Green (RoHS compliant and no Sb/Br)

ams Green defines that additionally to RoHS compliance, our products are free of Bromine (Br) and Antimony (Sb) based flame retardants (Br or Sb do not exceed 0.1% by weight in homogeneous material).

### Important Information

The information provided in this statement represents ams knowledge and belief as of the date that it is provided. ams bases its knowledge and belief on information provided by third parties, and makes no representation or warranty as to the accuracy of such information. Efforts are underway to better integrate information from third parties. ams has taken and continues to take reasonable steps to provide representative and accurate information but may not have conducted destructive testing or chemical analysis on incoming materials and chemicals. ams and ams suppliers consider certain information to be proprietary, and thus CAS numbers and other limited information may not be available for release.

## 9 Copyrights & Disclaimer

Copyright ams AG, Tobelbader Strasse 30, 8141 Unterpremstaetten, Austria-Europe. Trademarks Registered. All rights reserved. The material herein may not be reproduced, adapted, merged, translated, stored, or used without the prior written consent of the copyright owner.

Devices sold by ams AG are covered by the warranty and patent indemnification provisions appearing in its Term of Sale. ams AG makes no warranty, express, statutory, implied, or by description regarding the information set forth herein. ams AG reserves the right to change specifications and prices at any time and without notice. Therefore, prior to designing this product into a system, it is necessary to check with ams AG for current information. This product is intended for use in commercial applications. Applications requiring extended temperature range, unusual environmental requirements, or high reliability applications, such as military, medical life-support or life-sustaining equipment are specifically not recommended without additional processing by ams AG for each application. This Product is provided by ams "AS IS" and any express or implied warranties, including, but not limited to the implied warranties of merchantability and fitness for a particular purpose are disclaimed.

ams AG shall not be liable to recipient or any third party for any damages, including but not limited to personal injury, property damage, loss of profits, loss of use, interruption of business or indirect, special, incidental or consequential damages, of any kind, in connection with or arising out of the furnishing, performance or use of the technical data herein. No obligation or liability to recipient or any third party shall arise or flow out of ams AG rendering of technical or other services.