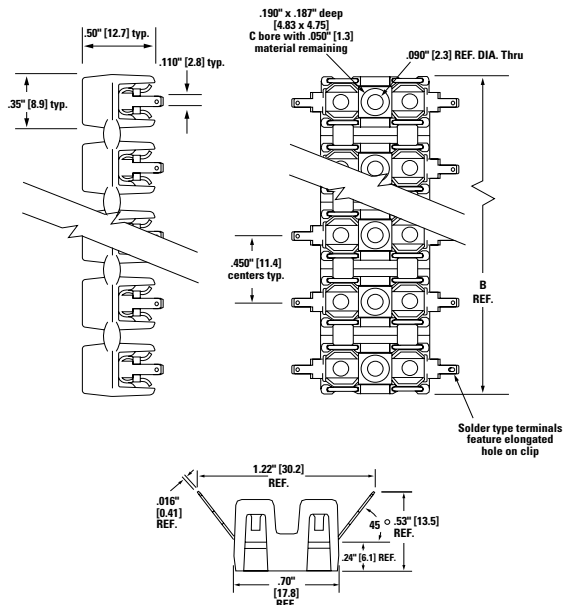


**254 Series OMNI-BLOK® Molded Base Fuse Block for 2AG Fuses**



**Dimensions [mm]**

**Solder & Q.C. Types:**



Solder type terminals feature elongated hole on clip

**Product Characteristics**

Compatible Fuses Size	2AG
<b>Description</b>	This low profile Omni-Blok® Fuse Block design is available with a choice of solder type terminals, Q.C. terminals or PC. board mountable terminals. The PCB design is offered with either tin-plated brass terminals for normal applications or tin-plated beryllium copper terminals for use in caustic environments. These fuse blocks feature individual barriers which reinforce the fuse clips while providing greater protection against clip damage and electrical shock. The unique design permits self-alignment of clips to fuse cap. This, plus a one-piece clip/terminal assures low contact resistance. Multiple units may be broken apart to obtain desired number of units.
<b>Rating</b>	400 VAC/DC, 10A
<b>Dielectric Strength</b>	1500V Minimum
<b>Clip/Terminals</b>	Tin-Plated Spring Brass, except pn 254121 is Tin-Plated Beryllium Copper
<b>Base</b>	Black Thermoplastic, glass reinforced with UL V0 flammability rating
<b>Ambient Temperature</b>	-40°C to +85°C

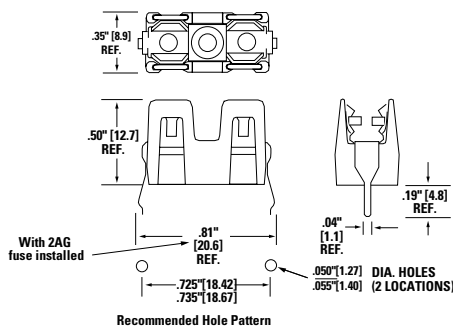
**Agency Approval**

Agency	Agency File Number
<b>UL US</b>	E14721
<b>SP</b>	7316

**OPTIONS:**

1. Other colors available on special order. Contact factory.
2. Two different style clips can be supplied for circuit identity or polarization. Contact factory.

**PC. Board Mount Type**



Recommended Hole Pattern

**Additional Information**



Datasheet



Resources



Samples

### Ordering Information

Ordering NO.*	Catalog NO.	No. of Poles	Width (B)	Width [mm]	Clip/Terminal Material	Packaging Available
<b>Solder Type Terminals</b>						
02540001Z	254 001	1	0.35"	[8.6]	Brass	Z
02540002Z	254 002	2	0.875"	[22.2]	Brass	Z
02540003Z	254 003	3	1.31"	[33.3]	Brass	Z
02540004Z	254 004	4	1.75"	[44.5]	Brass	Z
02540005Z	254 005	5	2.18"	[55.4]	Brass	Z
02540006Z	254 006	6	2.62"	[66.5]	Brass	Z
02540007Z	254 007	7	3.06"	[77.7]	Brass	Z
02540008Z	254 008	8	3.50"	[88.9]	Brass	Z
<b>NEMA Style .110" O.C. Terminals</b>						
02540201Z	254 201	1	0.35"	[8.6]	Brass	Z
02540202Z	254 202	2	0.875"	[22.2]	Brass	Z
02540203Z	254 203	3	1.31"	[33.3]	Brass	Z
02540204Z	254 204	4	1.75"	[44.5]	Brass	Z
02540205Z	254 205	5	2.18"	[55.4]	Brass	Z
02540206Z	254 206	6	2.62"	[66.5]	Brass	Z
02540207Z	254 207	7	3.06"	[77.7]	Brass	Z
02540208Z	254 208	8	3.50"	[88.9]	Brass	Z
<b>P.C. Board Mount</b>						
02540101Z	254 101	1	0.35"	[8.6]	Brass	Z
02540121Z	254 121	1	0.35"	[8.6]	Beryllium Copper	Z

**Add Suffix:**

Z = for bulk package