

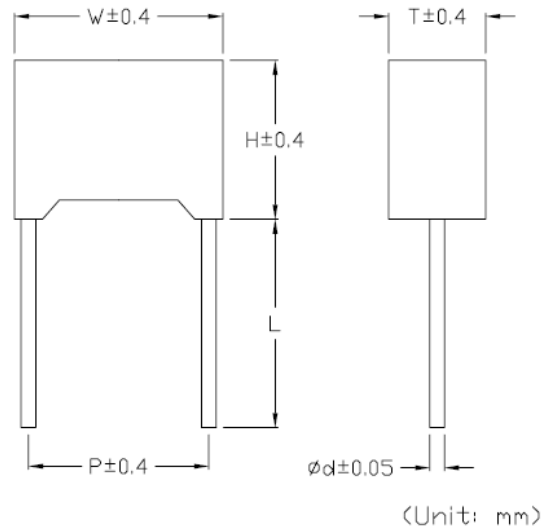
CMPB Series

Metallized Polypropylene Film Capacitors (Encapsulated)

TRIGON
COMPONENTS



Configuration



Capacitor

FEATURES

- Metallized polypropylene structure.
- Low loss at high frequency.
- Small inherent temperature rise.
- Plastic case (UL 94 V-0), Epoxy resin sealing.
- RoHS Compliant.

APPLICATIONS

- Widely used in high frequency, DC, AC and pulse circuits.
- S-correction circuits for TV sets and monitors.

ORDERING CODE

CMPB 223 J 251 L 100 T
(1) (2) (3) (4) (5) (6) (7)

- (1) Metallized Polypropylene Film Capacitor (Encapsulated)
- (2) Capacitance Code
- (3) Tolerance Code
- (4) Rated Voltage Code
- (5) Style
- (6) Lead to Lead Distance
- (7) Package

※Please refer to complete Ordering Code document (CPMx-Ord) for more ordering options.

Specification:

| Item | Performance Characteristics |
|-----------------------|---|
| Reference Standard | GB/T 10190 (IEC 60384-16) |
| Climatic Category | 40/105/21 |
| Rated Temperature | 85°C |
| Operating Temperature | -40°C ~ +105°C (+85°C to +105°C: Decreasing Factor 1.25% per °C for V_R (dc)) |
| Rated Voltage | 160Vdc (90Vac), 250Vdc (160Vac), 400Vdc (220Vac), 630Vdc (250Vac), 1000Vdc (400Vac), 1600Vdc (500Vac), 2000Vdc (700Vac) |
| Capacitance Range | 0.000586 μ F ~ 15.0 μ F |
| Capacitance Tolerance | ±2% (G), ±3% (H), ±5% (J), ±10% (K), ±20%(M) |
| Voltage Proof | 1.60 U_R (5s) |
| Dissipation Factor | $\leq 10 \times 10^{-4}$ AT 1KHz, 20°C |
| Insulation Resistance | $\geq 50,000$ M Ω (CR $\leq 0.33\mu$ F) (20°C, 100V, 1min) $\geq 15,000$ M Ω (CR>0.33 μ F) |

CMPB Series

Metallized Polypropylene Film Capacitors (Encapsulated)

TRIGON
COMPONENTS

Dimensions: (Unit: mm)

| RV | 160VDC (90VAC) | | | | | | RV | 160VDC (90VAC) | | | | | |
|-----------|----------------|------|-----|------|-----|------------------|-----------|----------------|------|------|------|-----|------------------|
| Cap. (μF) | W | H | T | P | d | P/N | Cap. (μF) | W | H | T | P | d | P/N |
| 0.027 | 7.2 | 7.5 | 3.5 | 5.0 | 0.5 | CMPB273-161+050~ | 0.82 | 17.5 | 14.5 | 8.5 | 15.0 | 0.8 | CMPB824-161+150~ |
| 0.033 | 7.2 | 7.5 | 3.5 | 5.0 | 0.5 | CMPB333-161+050~ | 1.0 | 17.5 | 16.0 | 10.0 | 15.0 | 0.8 | CMPB105-161+150~ |
| 0.039 | 7.2 | 7.5 | 3.5 | 5.0 | 0.5 | CMPB393-161+050~ | 1.2 | 17.5 | 16.0 | 10.0 | 15.0 | 0.8 | CMPB125-161+150~ |
| 0.047 | 7.2 | 9.5 | 4.5 | 5.0 | 0.6 | CMPB473-161+050~ | 1.5 | 17.5 | 19.0 | 11.0 | 15.0 | 0.8 | CMPB155-161+150~ |
| 0.056 | 7.2 | 9.5 | 4.5 | 5.0 | 0.6 | CMPB563-161+050~ | 1.8 | 17.5 | 19.0 | 11.0 | 15.0 | 0.8 | CMPB185-161+150~ |
| 0.068 | 7.2 | 9.5 | 4.5 | 5.0 | 0.6 | CMPB683-161+050~ | 0.47 | 26.5 | 15.0 | 6.0 | 22.5 | 0.8 | CMPB474-161+225~ |
| 0.082 | 7.2 | 10.0 | 5.0 | 5.0 | 0.6 | CMPB823-161+050~ | 0.56 | 26.5 | 15.0 | 6.0 | 22.5 | 0.8 | CMPB564-161+225~ |
| 0.10 | 7.2 | 10.0 | 5.0 | 5.0 | 0.6 | CMPB104-161+050~ | 0.68 | 26.5 | 15.0 | 6.0 | 22.5 | 0.8 | CMPB684-161+225~ |
| 0.12 | 7.2 | 11.0 | 6.0 | 5.0 | 0.6 | CMPB124-161+050~ | 0.82 | 26.5 | 16.0 | 7.0 | 22.5 | 0.8 | CMPB824-161+225~ |
| 0.15 | 7.2 | 11.0 | 6.0 | 5.0 | 0.6 | CMPB154-161+050~ | 1.0 | 26.5 | 16.0 | 7.0 | 22.5 | 0.8 | CMPB105-161+225~ |
| 0.068 | 10.5 | 9.0 | 4.0 | 7.5 | 0.6 | CMPB683-161+075~ | 1.2 | 26.5 | 17.0 | 8.5 | 22.5 | 0.8 | CMPB125-161+225~ |
| 0.082 | 10.5 | 9.0 | 4.0 | 7.5 | 0.6 | CMPB823-161+075~ | 1.5 | 26.5 | 17.0 | 8.5 | 22.5 | 0.8 | CMPB155-161+225~ |
| 0.10 | 10.5 | 11.0 | 5.0 | 7.5 | 0.6 | CMPB104-161+075~ | 1.8 | 26.5 | 18.5 | 10.0 | 22.5 | 0.8 | CMPB185-161+225~ |
| 0.12 | 10.5 | 11.0 | 5.0 | 7.5 | 0.6 | CMPB124-161+075~ | 2.2 | 26.5 | 20.0 | 11.0 | 22.5 | 0.8 | CMPB225-161+225~ |
| 0.15 | 10.5 | 12.0 | 6.0 | 7.5 | 0.6 | CMPB154-161+075~ | 2.7 | 26.5 | 22.0 | 12.0 | 22.5 | 0.8 | CMPB275-161+225~ |
| 0.18 | 10.5 | 12.0 | 6.0 | 7.5 | 0.6 | CMPB184-161+075~ | 3.3 | 26.5 | 22.0 | 12.0 | 22.5 | 0.8 | CMPB335-161+225~ |
| 0.082 | 13.0 | 9.0 | 4.0 | 10.0 | 0.6 | CMPB823-161+100~ | 1.0 | 32.0 | 18.0 | 9.0 | 27.5 | 0.8 | CMPB105-161+275~ |
| 0.10 | 13.0 | 9.0 | 4.0 | 10.0 | 0.6 | CMPB104-161+100~ | 1.2 | 32.0 | 18.0 | 9.0 | 27.5 | 0.8 | CMPB125-161+275~ |
| 0.12 | 13.0 | 11.0 | 5.0 | 10.0 | 0.6 | CMPB124-161+100~ | 1.5 | 32.0 | 18.0 | 9.0 | 27.5 | 0.8 | CMPB155-161+275~ |
| 0.15 | 13.0 | 11.0 | 5.0 | 10.0 | 0.6 | CMPB154-161+100~ | 1.8 | 32.0 | 18.0 | 9.0 | 27.5 | 0.8 | CMPB185-161+275~ |
| 0.18 | 13.0 | 11.0 | 5.0 | 10.0 | 0.6 | CMPB184-161+100~ | 2.2 | 32.0 | 18.0 | 9.0 | 27.5 | 0.8 | CMPB225-161+275~ |
| 0.22 | 13.0 | 12.0 | 6.0 | 10.0 | 0.6 | CMPB224-161+100~ | 2.7 | 32.0 | 20.0 | 11.0 | 27.5 | 0.8 | CMPB275-161+275~ |
| 0.27 | 13.0 | 12.0 | 6.0 | 10.0 | 0.6 | CMPB274-161+100~ | 3.3 | 32.0 | 20.0 | 11.0 | 27.5 | 0.8 | CMPB335-161+275~ |
| 0.18 | 17.5 | 11.0 | 5.0 | 15.0 | 0.8 | CMPB184-161+150~ | 3.9 | 32.0 | 22.0 | 13.0 | 27.5 | 0.8 | CMPB395-161+275~ |
| 0.22 | 17.5 | 11.0 | 5.0 | 15.0 | 0.8 | CMPB224-161+150~ | 4.7 | 32.0 | 28.0 | 14.0 | 27.5 | 0.8 | CMPB475-161+275~ |
| 0.27 | 17.5 | 11.0 | 5.0 | 15.0 | 0.8 | CMPB274-161+150~ | 5.6 | 32.0 | 24.5 | 15.0 | 27.5 | 0.8 | CMPB565-161+275~ |
| 0.33 | 17.5 | 11.0 | 5.0 | 15.0 | 0.8 | CMPB334-161+150~ | 6.8 | 32.0 | 33.0 | 18.0 | 27.5 | 0.8 | CMPB685-161+275~ |
| 0.39 | 17.5 | 12.0 | 6.0 | 15.0 | 0.8 | CMPB394-161+150~ | 8.2 | 32.0 | 33.0 | 18.0 | 27.5 | 0.8 | CMPB825-161+275~ |
| 0.47 | 17.5 | 12.0 | 6.0 | 15.0 | 0.8 | CMPB474-161+150~ | 10.0 | 32.0 | 33.0 | 18.0 | 27.5 | 0.8 | CMPB106-161+275~ |
| 0.56 | 17.5 | 13.5 | 7.5 | 15.0 | 0.8 | CMPB564-161+150~ | 12.0 | 32.0 | 37.0 | 22.0 | 27.5 | 0.8 | CMPB126-161+275~ |
| 0.68 | 17.5 | 13.5 | 7.5 | 15.0 | 0.8 | CMPB684-161+150~ | 15.0 | 32.0 | 37.0 | 22.0 | 27.5 | 0.8 | CMPB156-161+275~ |

- ※ Remark: 1. (-)= Capacitance tolerance code, M=±20%, K=±10%, J=±5%.
 2. (+)= Lead style code.
 3. (~)= package code.

CMPB Series

Metallized Polypropylene Film Capacitors (Encapsulated)

TRIGON
COMPONENTS

Dimensions: (Unit: mm)

| RV | 250VDC (160VAC) | | | | | | RV | 250VDC (160VAC) | | | | | |
|-----------|-----------------|------|-----|------|-----|------------------|-----------|-----------------|------|------|------|-----|------------------|
| Cap. (μF) | W | H | T | P | d | P/N | Cap. (μF) | W | H | T | P | d | P/N |
| 0.012 | 7.2 | 7.5 | 3.5 | 5.0 | 0.5 | CMPB123-251+050~ | 0.18 | 17.5 | 11.0 | 5.0 | 15.0 | 0.8 | CMPB184-251+150~ |
| 0.015 | 7.2 | 7.5 | 3.5 | 5.0 | 0.5 | CMPB153-251+050~ | 0.22 | 17.5 | 11.0 | 5.0 | 15.0 | 0.8 | CMPB224-251+150~ |
| 0.018 | 7.2 | 7.5 | 3.5 | 5.0 | 0.5 | CMPB183-251+050~ | 0.27 | 17.5 | 12.0 | 6.0 | 15.0 | 0.8 | CMPB274-251+150~ |
| 0.022 | 7.2 | 7.5 | 3.5 | 5.0 | 0.5 | CMPB223-251+050~ | 0.33 | 17.5 | 12.0 | 6.0 | 15.0 | 0.8 | CMPB334-251+150~ |
| 0.027 | 7.2 | 7.5 | 3.5 | 5.0 | 0.5 | CMPB273-251+050~ | 0.39 | 17.5 | 13.5 | 7.5 | 15.0 | 0.8 | CMPB394-251+150~ |
| 0.033 | 7.2 | 7.5 | 3.5 | 5.0 | 0.5 | CMPB333-251+050~ | 0.47 | 17.5 | 13.5 | 7.5 | 15.0 | 0.8 | CMPB474-251+150~ |
| 0.039 | 7.2 | 7.5 | 3.5 | 5.0 | 0.5 | CMPB393-251+050~ | 0.56 | 17.5 | 13.5 | 7.5 | 15.0 | 0.8 | CMPB564-251+150~ |
| 0.047 | 7.2 | 9.5 | 4.5 | 5.0 | 0.6 | CMPB473-251+050~ | 0.68 | 17.5 | 14.5 | 8.5 | 15.0 | 0.8 | CMPB684-251+150~ |
| 0.056 | 7.2 | 9.5 | 4.5 | 5.0 | 0.6 | CMPB563-251+050~ | 0.82 | 17.5 | 16.0 | 10.0 | 15.0 | 0.8 | CMPB824-251+150~ |
| 0.068 | 7.2 | 10.0 | 5.0 | 5.0 | 0.6 | CMPB683-251+050~ | 1.0 | 17.5 | 16.0 | 10.0 | 15.0 | 0.8 | CMPB105-251+150~ |
| 0.082 | 7.2 | 10.0 | 5.0 | 5.0 | 0.6 | CMPB823-251+050~ | 1.2 | 17.5 | 19.0 | 11.0 | 15.0 | 0.8 | CMPB125-251+150~ |
| 0.10 | 7.2 | 11.0 | 6.0 | 5.0 | 0.6 | CMPB104-251+050~ | 0.39 | 26.5 | 15.0 | 6.0 | 22.5 | 0.8 | CMPB394-251+225~ |
| 0.12 | 7.2 | 11.0 | 6.0 | 5.0 | 0.6 | CMPB124-251+050~ | 0.47 | 26.5 | 15.0 | 6.0 | 22.5 | 0.8 | CMPB474-251+225~ |
| 0.027 | 10.5 | 9.0 | 4.0 | 7.5 | 0.6 | CMPB273-251+075~ | 0.56 | 26.5 | 15.0 | 6.0 | 22.5 | 0.8 | CMPB564-251+225~ |
| 0.033 | 10.5 | 9.0 | 4.0 | 7.5 | 0.6 | CMPB333-251+075~ | 0.68 | 26.5 | 15.0 | 6.0 | 22.5 | 0.8 | CMPB684-251+225~ |
| 0.039 | 10.5 | 9.0 | 4.0 | 7.5 | 0.6 | CMPB393-251+075~ | 0.82 | 26.5 | 15.0 | 6.0 | 22.5 | 0.8 | CMPB824-251+225~ |
| 0.047 | 10.5 | 9.0 | 4.0 | 7.5 | 0.6 | CMPB473-251+075~ | 1.0 | 26.5 | 16.0 | 7.0 | 22.5 | 0.8 | CMPB105-251+225~ |
| 0.056 | 10.5 | 9.0 | 4.0 | 7.5 | 0.6 | CMPB563-251+075~ | 1.2 | 26.5 | 16.0 | 7.0 | 22.5 | 0.8 | CMPB125-251+225~ |
| 0.068 | 10.5 | 9.0 | 4.0 | 7.5 | 0.6 | CMPB683-251+075~ | 1.5 | 26.5 | 17.0 | 8.5 | 22.5 | 0.8 | CMPB155-251+225~ |
| 0.82 | 10.5 | 11.0 | 5.0 | 7.5 | 0.6 | CMPB823-251+075~ | 1.8 | 26.5 | 18.5 | 10.0 | 22.5 | 0.8 | CMPB185-251+225~ |
| 0.10 | 10.5 | 11.0 | 5.0 | 7.5 | 0.6 | CMPB104-251+075~ | 2.2 | 26.5 | 20.0 | 11.0 | 22.5 | 0.8 | CMPB225-251+225~ |
| 0.12 | 10.5 | 11.0 | 5.0 | 7.5 | 0.6 | CMPB124-251+075~ | 2.7 | 26.5 | 22.0 | 12.0 | 22.5 | 0.8 | CMPB275-251+225~ |
| 0.15 | 10.5 | 12.0 | 6.0 | 7.5 | 0.6 | CMPB154-251+075~ | 0.82 | 32.0 | 18.0 | 9.0 | 27.5 | 0.8 | CMPB824-251+275~ |
| 0.18 | 10.5 | 12.0 | 6.0 | 7.5 | 0.6 | CMPB184-251+075~ | 1.0 | 32.0 | 18.0 | 9.0 | 27.5 | 0.8 | CMPB105-251+275~ |
| 0.033 | 13.0 | 9.0 | 4.0 | 10.0 | 0.6 | CMPB333-251+100~ | 1.2 | 32.0 | 18.0 | 9.0 | 27.5 | 0.8 | CMPB125-251+275~ |
| 0.039 | 13.0 | 9.0 | 4.0 | 10.0 | 0.6 | CMPB393-251+100~ | 1.5 | 32.0 | 18.0 | 9.0 | 27.5 | 0.8 | CMPB155-251+275~ |
| 0.047 | 13.0 | 9.0 | 4.0 | 10.0 | 0.6 | CMPB473-251+100~ | 1.8 | 32.0 | 18.0 | 9.0 | 27.5 | 0.8 | CMPB185-251+275~ |
| 0.056 | 13.0 | 9.0 | 4.0 | 10.0 | 0.6 | CMPB563-251+100~ | 2.2 | 32.0 | 18.0 | 9.0 | 27.5 | 0.8 | CMPB225-251+275~ |
| 0.068 | 13.0 | 9.0 | 4.0 | 10.0 | 0.6 | CMPB683-251+100~ | 2.7 | 32.0 | 20.0 | 11.0 | 27.5 | 0.8 | CMPB275-251+275~ |
| 0.082 | 13.0 | 9.0 | 4.0 | 10.0 | 0.6 | CMPB823-251+100~ | 3.3 | 32.0 | 20.0 | 11.0 | 27.5 | 0.8 | CMPB335-251+275~ |
| 0.10 | 13.0 | 11.0 | 5.0 | 10.0 | 0.6 | CMPB104-251+100~ | 3.9 | 32.0 | 22.0 | 13.0 | 27.5 | 0.8 | CMPB395-251+275~ |
| 0.12 | 13.0 | 11.0 | 5.0 | 10.0 | 0.6 | CMPB124-251+100~ | 4.7 | 32.0 | 28.0 | 14.0 | 27.5 | 0.8 | CMPB475-251+275~ |
| 0.15 | 13.0 | 11.0 | 5.0 | 10.0 | 0.6 | CMPB154-251+100~ | 5.6 | 32.0 | 24.5 | 15.0 | 27.5 | 0.8 | CMPB565-251+275~ |
| 0.18 | 13.0 | 12.0 | 6.0 | 10.0 | 0.6 | CMPB184-251+100~ | 6.8 | 32.0 | 33.0 | 18.0 | 27.5 | 0.8 | CMPB685-251+275~ |
| 0.22 | 13.0 | 12.0 | 6.0 | 10.0 | 0.6 | CMPB224-251+100~ | 8.2 | 32.0 | 33.0 | 18.0 | 27.5 | 0.8 | CMPB825-251+275~ |
| 0.10 | 17.5 | 11.0 | 5.0 | 15.0 | 0.8 | CMPB104-251+150~ | 10.0 | 32.0 | 33.0 | 18.0 | 27.5 | 0.8 | CMPB106-251+275~ |
| 0.12 | 17.5 | 11.0 | 5.0 | 15.0 | 0.8 | CMPB124-251+150~ | 12.0 | 32.0 | 37.0 | 22.0 | 27.5 | 0.8 | CMPB126-251+275~ |
| 0.15 | 17.5 | 11.0 | 5.0 | 15.0 | 0.8 | CMPB154-251+150~ | 15.0 | 32.0 | 37.0 | 22.0 | 27.5 | 0.8 | CMPB156-251+275~ |

- ※ Remark: 1. (-)= Capacitance tolerance code, M=±20%, K=±10%, J=±5%.
 2. (+)= Lead style code.
 3. (-)= Package code.

Capacitor

CMPB Series

Metallized Polypropylene Film Capacitors (Encapsulated)

TRIGON
COMPONENTS

Dimensions: (Unit: mm)

| RV | 400VDC (220VAC) | | | | | | RV | 400VDC (220VAC) | | | | | |
|-----------|-----------------|------|-----|------|-----|------------------|-----------|-----------------|------|------|------|-----|------------------|
| Cap. (μF) | W | H | T | P | d | P/N | Cap. (μF) | W | H | T | P | d | P/N |
| 0.0039 | 7.2 | 7.5 | 3.5 | 5.0 | 0.5 | CMPB392-401+050~ | 0.10 | 17.5 | 11.0 | 5.0 | 15.0 | 0.8 | CMPB104-401+150~ |
| 0.0047 | 7.2 | 7.5 | 3.5 | 5.0 | 0.5 | CMPB472-401+050~ | 0.12 | 17.5 | 11.0 | 5.0 | 15.0 | 0.8 | CMPB124-401+150~ |
| 0.0056 | 7.2 | 7.5 | 3.5 | 5.0 | 0.5 | CMPB562-401+050~ | 0.15 | 17.5 | 12.0 | 6.0 | 15.0 | 0.8 | CMPB154-401+150~ |
| 0.0068 | 7.2 | 7.5 | 3.5 | 5.0 | 0.5 | CMPB682-401+050~ | 0.18 | 17.5 | 12.0 | 6.0 | 15.0 | 0.8 | CMPB184-401+150~ |
| 0.0082 | 7.2 | 7.5 | 3.5 | 5.0 | 0.5 | CMPB822-401+050~ | 0.22 | 17.5 | 13.5 | 7.5 | 15.0 | 0.8 | CMPB224-401+150~ |
| 0.010 | 7.2 | 7.5 | 3.5 | 5.0 | 0.5 | CMPB103-401+050~ | 0.27 | 17.5 | 13.5 | 7.5 | 15.0 | 0.8 | CMPB274-401+150~ |
| 0.012 | 7.2 | 7.5 | 3.5 | 5.0 | 0.5 | CMPB123-401+050~ | 0.33 | 17.5 | 14.5 | 8.5 | 15.0 | 0.8 | CMPB334-401+150~ |
| 0.015 | 7.2 | 9.5 | 4.5 | 5.0 | 0.6 | CMPB153-401+050~ | 0.39 | 17.5 | 16.0 | 10.0 | 15.0 | 0.8 | CMPB394-401+150~ |
| 0.018 | 7.2 | 9.5 | 4.5 | 5.0 | 0.6 | CMPB183-401+050~ | 0.47 | 17.5 | 16.0 | 10.0 | 15.0 | 0.8 | CMPB474-401+150~ |
| 0.022 | 7.2 | 9.5 | 4.5 | 5.0 | 0.6 | CMPB223-401+050~ | 0.56 | 17.5 | 19.0 | 11.0 | 15.0 | 0.8 | CMPB564-401+150~ |
| 0.027 | 7.2 | 10.0 | 5.0 | 5.0 | 0.6 | CMPB273-401+050~ | 0.68 | 17.5 | 19.0 | 11.0 | 15.0 | 0.8 | CMPB684-401+150~ |
| 0.033 | 7.2 | 11.0 | 6.0 | 5.0 | 0.6 | CMPB333-401+050~ | 0.18 | 26.5 | 15.0 | 6.0 | 22.5 | 0.8 | CMPB184-401+225~ |
| 0.039 | 7.2 | 11.0 | 6.0 | 5.0 | 0.6 | CMPB393-401+050~ | 0.22 | 26.5 | 15.0 | 6.0 | 22.5 | 0.8 | CMPB224-401+225~ |
| 0.047 | 7.2 | 11.0 | 6.0 | 5.0 | 0.6 | CMPB473-401+050~ | 0.27 | 26.5 | 15.0 | 6.0 | 22.5 | 0.8 | CMPB274-401+225~ |
| 0.010 | 10.5 | 9.0 | 4.0 | 7.5 | 0.6 | CMPB103-401+075~ | 0.33 | 26.5 | 15.0 | 6.0 | 22.5 | 0.8 | CMPB334-401+225~ |
| 0.012 | 10.5 | 9.0 | 4.0 | 7.5 | 0.6 | CMPB123-401+075~ | 0.39 | 26.5 | 16.0 | 7.0 | 22.5 | 0.8 | CMPB394-401+225~ |
| 0.015 | 10.5 | 9.0 | 4.0 | 7.5 | 0.6 | CMPB153-401+075~ | 0.47 | 26.5 | 16.0 | 7.0 | 22.5 | 0.8 | CMPB474-401+225~ |
| 0.018 | 10.5 | 9.0 | 4.0 | 7.5 | 0.6 | CMPB183-401+075~ | 0.56 | 26.5 | 17.0 | 8.5 | 22.5 | 0.8 | CMPB564-401+225~ |
| 0.022 | 10.5 | 9.0 | 4.0 | 7.5 | 0.6 | CMPB223-401+075~ | 0.68 | 26.5 | 17.0 | 8.5 | 22.5 | 0.8 | CMPB684-401+225~ |
| 0.027 | 10.5 | 9.0 | 4.0 | 7.5 | 0.6 | CMPB273-401+075~ | 0.82 | 26.5 | 18.5 | 10.0 | 22.5 | 0.8 | CMPB824-401+225~ |
| 0.033 | 10.5 | 11.0 | 5.0 | 7.5 | 0.6 | CMPB333-401+075~ | 1.0 | 26.5 | 20.0 | 11.0 | 22.5 | 0.8 | CMPB105-401+225~ |
| 0.039 | 10.5 | 11.0 | 5.0 | 7.5 | 0.6 | CMPB393-401+075~ | 1.2 | 26.5 | 22.0 | 12.0 | 22.5 | 0.8 | CMPB125-401+225~ |
| 0.047 | 10.5 | 11.0 | 5.0 | 7.5 | 0.6 | CMPB473-401+075~ | 1.5 | 26.5 | 22.0 | 12.0 | 22.5 | 0.8 | CMPB155-401+225~ |
| 0.056 | 10.5 | 12.0 | 6.0 | 7.5 | 0.6 | CMPB563-401+075~ | 0.56 | 32.0 | 18.0 | 9.0 | 27.5 | 0.8 | CMPB564-401+275~ |
| 0.068 | 10.5 | 12.0 | 6.0 | 7.5 | 0.6 | CMPB683-401+075~ | 0.68 | 32.0 | 18.0 | 9.0 | 27.5 | 0.8 | CMPB684-401+275~ |
| 0.015 | 13.0 | 9.0 | 4.0 | 10.0 | 0.6 | CMPB153-401+100~ | 0.82 | 32.0 | 18.0 | 9.0 | 27.5 | 0.8 | CMPB824-401+275~ |
| 0.018 | 13.0 | 9.0 | 4.0 | 10.0 | 0.6 | CMPB183-401+100~ | 1.0 | 32.0 | 18.0 | 9.0 | 27.5 | 0.8 | CMPB105-401+275~ |
| 0.022 | 13.0 | 9.0 | 4.0 | 10.0 | 0.6 | CMPB223-401+100~ | 1.2 | 32.0 | 20.0 | 11.0 | 27.5 | 0.8 | CMPB125-401+275~ |
| 0.027 | 13.0 | 9.0 | 4.0 | 10.0 | 0.6 | CMPB273-401+100~ | 1.5 | 32.0 | 20.0 | 11.0 | 27.5 | 0.8 | CMPB155-401+275~ |
| 0.033 | 13.0 | 9.0 | 4.0 | 10.0 | 0.6 | CMPB333-401+100~ | 1.8 | 32.0 | 22.0 | 13.0 | 27.5 | 0.8 | CMPB185-401+275~ |
| 0.039 | 13.0 | 9.0 | 4.0 | 10.0 | 0.6 | CMPB393-401+100~ | 2.2 | 32.0 | 24.5 | 15.0 | 27.5 | 0.8 | CMPB225-401+275~ |
| 0.047 | 13.0 | 11.0 | 5.0 | 10.0 | 0.6 | CMPB473-401+100~ | 2.7 | 32.0 | 28.0 | 14.0 | 27.5 | 0.8 | CMPB275-401+275~ |
| 0.056 | 13.0 | 11.0 | 5.0 | 10.0 | 0.6 | CMPB563-401+100~ | 3.3 | 32.0 | 33.0 | 18.0 | 27.5 | 0.8 | CMPB335-401+275~ |
| 0.068 | 13.0 | 11.0 | 5.0 | 10.0 | 0.6 | CMPB683-401+100~ | 3.9 | 32.0 | 33.0 | 18.0 | 27.5 | 0.8 | CMPB395-401+275~ |
| 0.082 | 13.0 | 12.0 | 6.0 | 10.0 | 0.6 | CMPB823-401+100~ | 4.7 | 32.0 | 37.0 | 22.0 | 27.5 | 0.8 | CMPB475-401+275~ |
| 0.10 | 13.0 | 12.0 | 6.0 | 10.0 | 0.6 | CMPB104-401+100~ | 5.6 | 32.0 | 37.0 | 22.0 | 27.5 | 0.8 | CMPB565-401+275~ |
| 0.068 | 17.5 | 11.0 | 5.0 | 15.0 | 0.8 | CMPB683-401+150~ | | | | | | | |
| 0.082 | 17.5 | 11.0 | 5.0 | 15.0 | 0.8 | CMPB823-401+150~ | | | | | | | |

- ※ Remark: 1. (-)= Capacitance tolerance code, M=±20%, K=±10%, J=±5%.
 2. (+)= Lead style code.
 3. (-)= Package code.

Capacitor

CMPB Series

Metallized Polypropylene Film Capacitors (Encapsulated)

TRIGON
COMPONENTS

Dimensions: (Unit: mm)

| RV | | 630VDC (250VAC) | | | | | | RV | | 630VDC (250VAC) | | | | | | RV | | 630VDC (250VAC) | | | | | |
|----------|------|-----------------|-----|-----|-----|------------------|----------|------|------|-----------------|------|-----|------------------|----------|------|------|------|-----------------|-----|------------------|--|--|--|
| Cap.(uF) | W | H | T | P | d | P/N | Cap.(uF) | W | H | T | P | d | P/N | Cap.(uF) | W | H | T | P | d | P/N | | | |
| 0.0010 | 7.2 | 7.5 | 3.5 | 5.0 | 0.5 | CMPB102-631+050~ | 0.027 | 13.0 | 12.0 | 6.0 | 7.5 | 0.6 | CMPB273-631+075~ | 0.12 | 17.5 | 13.5 | 7.5 | 15.0 | 0.8 | CMPB124-631+150~ | | | |
| 0.0012 | 7.2 | 7.5 | 3.5 | 5.0 | 0.5 | CMPB122-631+050~ | 0.033 | 13.0 | 12.0 | 6.0 | 7.5 | 0.6 | CMPB333-631+075~ | 0.15 | 17.5 | 13.5 | 7.5 | 15.0 | 0.8 | CMPB154-631+150~ | | | |
| 0.0015 | 7.2 | 7.5 | 3.5 | 5.0 | 0.5 | CMPB152-631+050~ | 0.0010 | 13.0 | 9.0 | 4.0 | 10.0 | 0.6 | CMPB102-631+100~ | 0.18 | 17.5 | 14.5 | 8.5 | 15.0 | 0.8 | CMPB184-631+150~ | | | |
| 0.0018 | 7.2 | 7.5 | 3.5 | 5.0 | 0.5 | CMPB182-631+050~ | 0.0012 | 13.0 | 9.0 | 4.0 | 10.0 | 0.6 | CMPB122-631+100~ | 0.22 | 17.5 | 16.0 | 10.0 | 15.0 | 0.8 | CMPB224-631+150~ | | | |
| 0.0022 | 7.2 | 7.5 | 3.5 | 5.0 | 0.5 | CMPB222-631+050~ | 0.0015 | 13.0 | 9.0 | 4.0 | 10.0 | 0.6 | CMPB152-631+100~ | 0.27 | 17.5 | 19.0 | 11.0 | 15.0 | 0.8 | CMPB274-631+150~ | | | |
| 0.0027 | 7.2 | 7.5 | 3.5 | 5.0 | 0.5 | CMPB272-631+050~ | 0.0018 | 13.0 | 9.0 | 4.0 | 10.0 | 0.6 | CMPB182-631+100~ | 0.33 | 17.5 | 19.0 | 11.0 | 15.0 | 0.8 | CMPB334-631+150~ | | | |
| 0.0033 | 7.2 | 7.5 | 3.5 | 5.0 | 0.5 | CMPB332-631+050~ | 0.0022 | 13.0 | 9.0 | 4.0 | 10.0 | 0.6 | CMPB222-631+100~ | 0.082 | 26.5 | 15.0 | 6.0 | 22.5 | 0.8 | CMPB823-631+225~ | | | |
| 0.0039 | 7.2 | 9.5 | 4.5 | 5.0 | 0.6 | CMPB392-631+050~ | 0.0027 | 13.0 | 9.0 | 4.0 | 10.0 | 0.6 | CMPB272-631+100~ | 0.10 | 26.5 | 15.0 | 6.0 | 22.5 | 0.8 | CMPB104-631+225~ | | | |
| 0.0047 | 7.2 | 9.5 | 4.5 | 5.0 | 0.6 | CMPB472-631+050~ | 0.0033 | 13.0 | 9.0 | 4.0 | 10.0 | 0.6 | CMPB332-631+100~ | 0.12 | 26.5 | 15.0 | 6.0 | 22.5 | 0.8 | CMPB124-631+225~ | | | |
| 0.0056 | 7.2 | 10.0 | 5.0 | 5.0 | 0.6 | CMPB562-631+050~ | 0.0039 | 13.0 | 9.0 | 4.0 | 10.0 | 0.6 | CMPB392-631+100~ | 0.15 | 26.5 | 15.0 | 6.0 | 22.5 | 0.8 | CMPB154-631+225~ | | | |
| 0.0068 | 7.2 | 10.0 | 5.0 | 5.0 | 0.6 | CMPB682-631+050~ | 0.0047 | 13.0 | 9.0 | 4.0 | 10.0 | 0.6 | CMPB472-631+100~ | 0.18 | 26.5 | 15.0 | 6.0 | 22.5 | 0.8 | CMPB184-631+225~ | | | |
| 0.0082 | 7.2 | 11.0 | 6.0 | 5.0 | 0.6 | CMPB822-631+050~ | 0.0056 | 13.0 | 9.0 | 4.0 | 10.0 | 0.6 | CMPB562-631+100~ | 0.22 | 26.5 | 16.0 | 7.0 | 22.5 | 0.8 | CMPB224-631+225~ | | | |
| 0.010 | 7.2 | 11.0 | 6.0 | 5.0 | 0.6 | CMPB103-631+050~ | 0.0068 | 13.0 | 9.0 | 4.0 | 10.0 | 0.6 | CMPB682-631+100~ | 0.27 | 26.5 | 17.0 | 8.5 | 22.5 | 0.8 | CMPB274-631+225~ | | | |
| 0.012 | 7.2 | 11.0 | 6.0 | 5.0 | 0.6 | CMPB123-631+050~ | 0.0082 | 13.0 | 9.0 | 4.0 | 10.0 | 0.6 | CMPB822-631+100~ | 0.33 | 26.5 | 17.0 | 8.5 | 22.5 | 0.8 | CMPB334-631+225~ | | | |
| 0.010 | 10.5 | 9.0 | 4.0 | 7.5 | 0.6 | CMPB102-631+075~ | 0.010 | 13.0 | 9.0 | 4.0 | 10.0 | 0.6 | CMPB103-631+100~ | 0.39 | 26.5 | 18.5 | 10.0 | 22.5 | 0.8 | CMPB394-631+225~ | | | |
| 0.0012 | 10.5 | 9.0 | 4.0 | 7.5 | 0.6 | CMPB122-631+075~ | 0.012 | 13.0 | 9.0 | 4.0 | 10.0 | 0.6 | CMPB123-631+100~ | 0.47 | 26.5 | 18.5 | 10.0 | 22.5 | 0.8 | CMPB474-631+225~ | | | |
| 0.0015 | 10.5 | 9.0 | 4.0 | 7.5 | 0.6 | CMPB152-631+075~ | 0.015 | 13.0 | 9.0 | 4.0 | 10.0 | 0.6 | CMPB153-631+100~ | 0.56 | 26.5 | 20.0 | 11.0 | 22.5 | 0.8 | CMPB564-631+225~ | | | |
| 0.0018 | 10.5 | 9.0 | 4.0 | 7.5 | 0.6 | CMPB182-631+075~ | 0.018 | 13.0 | 9.0 | 4.0 | 10.0 | 0.6 | CMPB183-631+100~ | 0.68 | 26.5 | 22.0 | 12.0 | 22.5 | 0.8 | CMPB684-631+225~ | | | |
| 0.0022 | 10.5 | 9.0 | 4.0 | 7.5 | 0.6 | CMPB222-631+075~ | 0.022 | 13.0 | 11.0 | 5.0 | 10.0 | 0.6 | CMPB223-631+100~ | 0.33 | 32.0 | 18.0 | 9.0 | 27.5 | 0.8 | CMPB334-631+275~ | | | |
| 0.0027 | 10.5 | 9.0 | 4.0 | 7.5 | 0.6 | CMPB272-631+075~ | 0.027 | 13.0 | 11.0 | 5.0 | 10.0 | 0.6 | CMPB273-631+100~ | 0.39 | 32.0 | 18.0 | 9.0 | 27.5 | 0.8 | CMPB394-631+275~ | | | |
| 0.0033 | 10.5 | 9.0 | 4.0 | 7.5 | 0.6 | CMPB332-631+075~ | 0.033 | 13.0 | 11.0 | 5.0 | 10.0 | 0.6 | CMPB333-631+100~ | 0.47 | 32.0 | 18.0 | 9.0 | 27.5 | 0.8 | CMPB474-631+275~ | | | |
| 0.0039 | 10.5 | 9.0 | 4.0 | 7.5 | 0.6 | CMPB392-631+075~ | 0.039 | 13.0 | 12.0 | 6.0 | 10.0 | 0.6 | CMPB393-631+100~ | 0.56 | 32.0 | 20.0 | 11.0 | 27.5 | 0.8 | CMPB564-631+275~ | | | |
| 0.0047 | 10.5 | 9.0 | 4.0 | 7.5 | 0.6 | CMPB472-631+075~ | 0.047 | 13.0 | 12.0 | 6.0 | 10.0 | 0.6 | CMPB473-631+100~ | 0.68 | 32.0 | 20.0 | 11.0 | 27.5 | 0.8 | CMPB684-631+275~ | | | |
| 0.0056 | 10.5 | 9.0 | 4.0 | 7.5 | 0.6 | CMPB562-631+075~ | 0.027 | 17.5 | 11.0 | 5.0 | 15.0 | 0.8 | CMPB273-631+150~ | 0.82 | 32.0 | 20.0 | 11.0 | 27.5 | 0.8 | CMPB824-631+275~ | | | |
| 0.0068 | 10.5 | 9.0 | 4.0 | 7.5 | 0.6 | CMPB682-631+075~ | 0.033 | 17.5 | 11.0 | 5.0 | 15.0 | 0.8 | CMPB333-631+150~ | 1.0 | 32.0 | 22.0 | 13.0 | 27.5 | 0.8 | CMPB105-631+275~ | | | |
| 0.0082 | 10.5 | 9.0 | 4.0 | 7.5 | 0.6 | CMPB822-631+075~ | 0.039 | 17.5 | 11.0 | 5.0 | 15.0 | 0.8 | CMPB393-631+150~ | 1.2 | 32.0 | 24.5 | 15.0 | 27.5 | 0.8 | CMPB125-631+275~ | | | |
| 0.010 | 10.5 | 9.0 | 4.0 | 7.5 | 0.6 | CMPB103-631+075~ | 0.047 | 17.5 | 11.0 | 5.0 | 15.0 | 0.8 | CMPB473-631+150~ | 1.5 | 32.0 | 28.0 | 14.0 | 27.5 | 0.8 | CMPB155-631+275~ | | | |
| 0.012 | 10.5 | 9.0 | 4.0 | 7.5 | 0.6 | CMPB123-631+075~ | 0.056 | 17.5 | 11.0 | 5.0 | 15.0 | 0.8 | CMPB563-631+150~ | 1.8 | 32.0 | 33.0 | 18.0 | 27.5 | 0.8 | CMPB185-631+275~ | | | |
| 0.015 | 10.5 | 11.0 | 5.0 | 7.5 | 0.6 | CMPB153-631+075~ | 0.068 | 17.5 | 12.0 | 6.0 | 15.0 | 0.8 | CMPB683-631+150~ | 2.2 | 32.0 | 33.0 | 18.0 | 27.5 | 0.8 | CMPB225-631+275~ | | | |
| 0.018 | 10.5 | 11.0 | 5.0 | 7.5 | 0.6 | CMPB183-631+075~ | 0.082 | 17.5 | 12.0 | 6.0 | 15.0 | 0.8 | CMPB823-631+150~ | 2.7 | 32.0 | 37.0 | 22.0 | 27.5 | 0.8 | CMPB275-631+275~ | | | |
| 0.022 | 10.5 | 11.0 | 5.0 | 7.5 | 0.6 | CMPB223-631+075~ | 0.10 | 17.5 | 13.5 | 7.5 | 15.0 | 0.8 | CMPB104-631+150~ | 3.3 | 32.0 | 37.0 | 22.0 | 27.5 | 0.8 | CMPB335-631+275~ | | | |

- ※ Remark: 1. (-) = Capacitance tolerance code, M=±20%, K=±10%, J=±5%.
 2. (+) = Lead style code.
 3. (~) = Package code.

CMPB Series

Metallized Polypropylene Film Capacitors (Encapsulated)

TRIGON
COMPONENTS

Dimensions: (Unit: mm)

| RV 1000VDC (400VAC) | | | | | | | RV 1600VDC (600VAC) | | | | | | | RV 2000VDC (700VAC) | | | | | | |
|---------------------|------|------|------|------|-----|------------------|---------------------|------|------|------|------|-----|------------------|---------------------|------|------|------|------|-----|------------------|
| Cap.(uF) | W | H | T | P | d | P/N | Cap.(uF) | W | H | T | P | d | P/N | Cap.(uF) | W | H | T | P | d | P/N |
| 0.0010 | 13.0 | 9.0 | 4.0 | 10.0 | 0.6 | CMPB102-102+100~ | 0.00056 | 17.5 | 11.0 | 5.0 | 15.0 | 0.8 | CMPB561-162+150~ | 0.00056 | 17.5 | 11.0 | 5.0 | 15.0 | 0.8 | CMPB561-202+150~ |
| 0.0012 | 13.0 | 9.0 | 4.0 | 10.0 | 0.6 | CMPB122-102+100~ | 0.00062 | 17.5 | 11.0 | 5.0 | 15.0 | 0.8 | CMPB621-162+150~ | 0.00062 | 17.5 | 11.0 | 5.0 | 15.0 | 0.8 | CMPB621-202+150~ |
| 0.0015 | 13.0 | 9.0 | 4.0 | 10.0 | 0.6 | CMPB152-102+100~ | 0.00068 | 17.5 | 11.0 | 5.0 | 15.0 | 0.8 | CMPB681-162+150~ | 0.00068 | 17.5 | 11.0 | 5.0 | 15.0 | 0.8 | CMPB681-202+150~ |
| 0.0018 | 13.0 | 9.0 | 4.0 | 10.0 | 0.6 | CMPB182-102+100~ | 0.00082 | 17.5 | 11.0 | 5.0 | 15.0 | 0.8 | CMPB821-162+150~ | 0.00082 | 17.5 | 11.0 | 5.0 | 15.0 | 0.8 | CMPB821-202+150~ |
| 0.0022 | 13.0 | 9.0 | 4.0 | 10.0 | 0.6 | CMPB222-102+100~ | 0.0010 | 17.5 | 11.0 | 5.0 | 15.0 | 0.8 | CMPB102-162+150~ | 0.0010 | 17.5 | 11.0 | 5.0 | 15.0 | 0.8 | CMPB102-202+150~ |
| 0.0027 | 13.0 | 9.0 | 4.0 | 10.0 | 0.6 | CMPB272-102+100~ | 0.0012 | 17.5 | 11.0 | 5.0 | 15.0 | 0.8 | CMPB122-162+150~ | 0.0012 | 17.5 | 11.0 | 5.0 | 15.0 | 0.8 | CMPB122-202+150~ |
| 0.0033 | 13.0 | 9.0 | 4.0 | 10.0 | 0.6 | CMPB332-102+100~ | 0.0015 | 17.5 | 11.0 | 5.0 | 15.0 | 0.8 | CMPB152-162+150~ | 0.0015 | 17.5 | 11.0 | 5.0 | 15.0 | 0.8 | CMPB152-202+150~ |
| 0.0039 | 13.0 | 9.0 | 4.0 | 10.0 | 0.6 | CMPB392-102+100~ | 0.0018 | 17.5 | 11.0 | 5.0 | 15.0 | 0.8 | CMPB182-162+150~ | 0.0018 | 17.5 | 11.0 | 5.0 | 15.0 | 0.8 | CMPB182-202+150~ |
| 0.0047 | 13.0 | 11.0 | 5.0 | 10.0 | 0.6 | CMPB472-102+100~ | 0.0022 | 17.5 | 11.0 | 5.0 | 15.0 | 0.8 | CMPB222-162+150~ | 0.0022 | 17.5 | 11.0 | 5.0 | 15.0 | 0.8 | CMPB222-202+150~ |
| 0.0056 | 13.0 | 11.0 | 5.0 | 10.0 | 0.6 | CMPB562-102+100~ | 0.0027 | 17.5 | 11.0 | 5.0 | 15.0 | 0.8 | CMPB272-162+150~ | 0.0027 | 17.5 | 11.0 | 5.0 | 15.0 | 0.8 | CMPB272-202+150~ |
| 0.0068 | 13.0 | 11.0 | 5.0 | 10.0 | 0.6 | CMPB682-102+100~ | 0.0033 | 17.5 | 11.0 | 5.0 | 15.0 | 0.8 | CMPB332-162+150~ | 0.0033 | 17.5 | 11.0 | 5.0 | 15.0 | 0.8 | CMPB332-202+150~ |
| 0.0082 | 13.0 | 12.0 | 6.0 | 10.0 | 0.6 | CMPB822-102+100~ | 0.0039 | 17.5 | 11.0 | 5.0 | 15.0 | 0.8 | CMPB392-162+150~ | 0.0039 | 17.5 | 11.0 | 5.0 | 15.0 | 0.8 | CMPB392-202+150~ |
| 0.010 | 13.0 | 12.0 | 6.0 | 10.0 | 0.6 | CMPB103-102+100~ | 0.0047 | 17.5 | 11.0 | 5.0 | 15.0 | 0.8 | CMPB472-162+150~ | 0.0047 | 17.5 | 11.0 | 5.0 | 15.0 | 0.8 | CMPB472-202+150~ |
| 0.0022 | 17.5 | 11.0 | 5.0 | 15.0 | 0.8 | CMPB222-102+150~ | 0.0056 | 17.5 | 11.0 | 5.0 | 15.0 | 0.8 | CMPB562-162+150~ | 0.0056 | 17.5 | 12.0 | 6.0 | 15.0 | 0.8 | CMPB562-202+150~ |
| 0.0027 | 17.5 | 11.0 | 5.0 | 15.0 | 0.8 | CMPB272-102+150~ | 0.0068 | 17.5 | 11.0 | 5.0 | 15.0 | 0.8 | CMPB682-162+150~ | 0.0068 | 17.5 | 12.0 | 6.0 | 15.0 | 0.8 | CMPB682-202+150~ |
| 0.0033 | 17.5 | 11.0 | 5.0 | 15.0 | 0.8 | CMPB332-102+150~ | 0.0082 | 17.5 | 12.0 | 6.0 | 15.0 | 0.8 | CMPB822-162+150~ | 0.0082 | 17.5 | 13.5 | 7.5 | 15.0 | 0.8 | CMPB822-202+150~ |
| 0.0039 | 17.5 | 11.0 | 5.0 | 15.0 | 0.8 | CMPB392-102+150~ | 0.010 | 17.5 | 12.0 | 6.0 | 15.0 | 0.8 | CMPB103-162+150~ | 0.010 | 17.5 | 13.5 | 7.5 | 15.0 | 0.8 | CMPB103-202+150~ |
| 0.0047 | 17.5 | 11.0 | 5.0 | 15.0 | 0.8 | CMPB472-102+150~ | 0.012 | 17.5 | 12.0 | 6.0 | 15.0 | 0.8 | CMPB123-162+150~ | 0.012 | 17.5 | 14.5 | 8.5 | 15.0 | 0.8 | CMPB123-202+150~ |
| 0.0056 | 17.5 | 11.0 | 5.0 | 15.0 | 0.8 | CMPB562-102+150~ | 0.015 | 17.5 | 13.5 | 7.5 | 15.0 | 0.8 | CMPB153-162+150~ | 0.015 | 17.5 | 14.5 | 8.5 | 15.0 | 0.8 | CMPB153-202+150~ |
| 0.0068 | 17.5 | 11.0 | 5.0 | 15.0 | 0.8 | CMPB682-102+150~ | 0.018 | 17.5 | 13.5 | 7.5 | 15.0 | 0.8 | CMPB183-162+150~ | 0.018 | 17.5 | 16.0 | 10.0 | 15.0 | 0.8 | CMPB183-202+150~ |
| 0.0082 | 17.5 | 11.0 | 5.0 | 15.0 | 0.8 | CMPB822-102+150~ | 0.022 | 17.5 | 14.5 | 8.5 | 15.0 | 0.8 | CMPB223-162+150~ | 0.022 | 17.5 | 19.0 | 11.0 | 15.0 | 0.8 | CMPB223-202+150~ |
| 0.010 | 17.5 | 11.0 | 5.0 | 15.0 | 0.8 | CMPB103-102+150~ | 0.027 | 17.5 | 16.0 | 10.0 | 15.0 | 0.8 | CMPB273-162+150~ | 0.0068 | 26.5 | 15.0 | 6.0 | 22.5 | 0.8 | CMPB682-202+225~ |
| 0.012 | 17.5 | 11.0 | 5.0 | 15.0 | 0.8 | CMPB123-102+150~ | 0.033 | 17.5 | 16.0 | 10.0 | 15.0 | 0.8 | CMPB333-162+150~ | 0.0082 | 26.5 | 15.0 | 6.0 | 22.5 | 0.8 | CMPB822-202+225~ |
| 0.015 | 17.5 | 12.0 | 6.0 | 15.0 | 0.8 | CMPB153-102+150~ | 0.039 | 17.5 | 19.0 | 11.0 | 15.0 | 0.8 | CMPB393-162+150~ | 0.010 | 26.5 | 15.0 | 6.0 | 22.5 | 0.8 | CMPB103-202+225~ |
| 0.018 | 17.5 | 12.0 | 6.0 | 15.0 | 0.8 | CMPB183-102+150~ | 0.047 | 26.5 | 19.0 | 11.0 | 15.0 | 0.8 | CMPB473-162+150~ | 0.012 | 26.5 | 15.0 | 6.0 | 22.5 | 0.8 | CMPB123-202+225~ |
| 0.022 | 17.5 | 13.5 | 7.5 | 15.0 | 0.8 | CMPB223-102+150~ | 0.015 | 26.5 | 15.0 | 6.0 | 22.5 | 0.8 | CMPB153-162+225~ | 0.015 | 26.5 | 15.0 | 6.0 | 22.5 | 0.8 | CMPB153-202+225~ |
| 0.027 | 17.5 | 13.5 | 7.5 | 15.0 | 0.8 | CMPB273-102+150~ | 0.018 | 26.5 | 15.0 | 6.0 | 22.5 | 0.8 | CMPB183-162+225~ | 0.018 | 26.5 | 16.0 | 7.0 | 22.5 | 0.8 | CMPB183-202+225~ |
| 0.033 | 17.5 | 14.5 | 8.5 | 15.0 | 0.8 | CMPB333-102+150~ | 0.022 | 26.5 | 15.0 | 6.0 | 22.5 | 0.8 | CMPB223-162+225~ | 0.022 | 26.5 | 17.0 | 8.5 | 22.5 | 0.8 | CMPB223-202+225~ |
| 0.039 | 17.5 | 16.0 | 10.0 | 15.0 | 0.8 | CMPB393-102+150~ | 0.027 | 26.5 | 16.0 | 7.0 | 22.5 | 0.8 | CMPB273-162+225~ | 0.027 | 26.5 | 17.0 | 8.5 | 22.5 | 0.8 | CMPB273-202+225~ |
| 0.047 | 17.5 | 16.0 | 10.0 | 15.0 | 0.8 | CMPB473-102+150~ | 0.033 | 26.5 | 16.0 | 7.0 | 22.5 | 0.8 | CMPB333-162+225~ | 0.033 | 26.5 | 18.5 | 10.0 | 22.5 | 0.8 | CMPB333-202+225~ |
| 0.056 | 17.5 | 19.0 | 11.0 | 15.0 | 0.8 | CMPB563-102+150~ | 0.039 | 26.5 | 17.0 | 8.5 | 22.5 | 0.8 | CMPB393-162+225~ | 0.039 | 26.5 | 18.5 | 10.0 | 22.5 | 0.8 | CMPB393-202+225~ |
| 0.068 | 17.5 | 19.0 | 11.0 | 15.0 | 0.8 | CMPB683-102+150~ | 0.047 | 26.5 | 18.5 | 10.0 | 22.5 | 0.8 | CMPB473-162+225~ | 0.047 | 26.5 | 22.0 | 12.0 | 22.5 | 0.8 | CMPB473-202+225~ |
| 0.018 | 26.5 | 15.0 | 6.0 | 22.5 | 0.8 | CMPB183-102+225~ | 0.056 | 26.5 | 18.5 | 10.0 | 22.5 | 0.8 | CMPB563-162+225~ | 0.056 | 26.5 | 22.0 | 12.0 | 22.5 | 0.8 | CMPB563-202+225~ |
| 0.022 | 26.5 | 15.0 | 6.0 | 22.5 | 0.8 | CMPB223-102+225~ | 0.068 | 26.5 | 22.0 | 12.0 | 22.5 | 0.8 | CMPB683-162+225~ | | | | | | | |
| 0.027 | 26.5 | 15.0 | 6.0 | 22.5 | 0.8 | CMPB273-102+225~ | 0.082 | 26.5 | 22.0 | 12.0 | 22.5 | 0.8 | CMPB823-162+225~ | | | | | | | |
| 0.033 | 26.5 | 15.0 | 6.0 | 22.5 | 0.8 | CMPB333-102+225~ | 0.10 | 26.5 | 22.0 | 12.0 | 22.5 | 0.8 | CMPB104-162+225~ | | | | | | | |
| 0.039 | 26.5 | 15.0 | 6.0 | 22.5 | 0.8 | CMPB393-102+225~ | | | | | | | | | | | | | | |
| 0.047 | 26.5 | 16.0 | 7.0 | 22.5 | 0.8 | CMPB473-102+225~ | | | | | | | | | | | | | | |
| 0.056 | 26.5 | 16.0 | 7.0 | 22.5 | 0.8 | CMPB563-102+225~ | | | | | | | | | | | | | | |
| 0.068 | 26.5 | 17.0 | 8.5 | 22.5 | 0.8 | CMPB683-102+225~ | | | | | | | | | | | | | | |
| 0.082 | 26.5 | 17.0 | 8.5 | 22.5 | 0.8 | CMPB823-102+225~ | | | | | | | | | | | | | | |
| 0.10 | 26.5 | 18.5 | 10.0 | 22.5 | 0.8 | CMPB104-102+225~ | | | | | | | | | | | | | | |
| 0.12 | 26.5 | 22.0 | 12.0 | 22.5 | 0.8 | CMPB124-102+225~ | | | | | | | | | | | | | | |
| 0.15 | 26.5 | 22.0 | 12.0 | 22.5 | 0.8 | CMPB154-102+225~ | | | | | | | | | | | | | | |

※ Remark: 1. (-)= Capacitance tolerance code, M=±20%, K=±10%, J=±5%.
 2. (+)= Lead style code.
 3. (~)= package code.

CMPB Series

Metallized Polypropylene Film Capacitors (Encapsulated)

TRIGON
COMPONENTS

Capacitor

ELECTRICAL CHARACTERISTIC:

| No | Test items | Performance | Test Method |
|----|--|--|---|
| 1 | Withstand voltage (Between terminals) | Shall be no abnormality | 150% Of rated voltage, 60sec. or 175% Of rated voltage, 1~5sec. |
| | Between terminal and enclosure | Shall be no abnormality | UR×200%+1000VDC, 60sec. |
| 2 | Insulation resistance (Between terminals) | CR ≤ 0.33uF IR ≥ 50,000MΩ CR > 0.33uF IR ≥ 15,000 (MΩ . uF) | Measured at 100±15VDC, for 60sec / 20°C |
| 3 | Capacitance | Within the tolerance specified | 1KHz, 1Vrms Max. at 20°C |
| 4 | Dissipation factor | ≤10X10 ⁻⁴ | 1KHz, 1Vrms Max. at 20°C |
| 5 | Tense strength of terminal | No wire breakage and no damage of capacitor | 1. Load Force: 1.0 Kg 2. Holding Time: 10 ± 1sec |
| 6 | Bending strength of terminal | No wire breakage and no damage of capacitor | 1. Load Force: 0.5 Kg 2. Bending Time: 4 x 90° in 5sec |
| 7 | Vibration | (1) Appearance: No visible damage (2) Contact: Normal | a. Frequency change: 1min. per cycle 10~55~10Hz b. Vibration distance: 1.5mm c. Course: X、Y、Z (axis) d. Time: 2h / axis (6h in total) |
| 8 | Solerability | 75% Of the surface tinning | a. Solder temperature: 230±5°C b. Solder time: 2±0.5sec |
| 9 | Heat shock test | (1) Appearance: No visible damage (2) Withstand voltage: Normal (3) Capacitance change: ≤ ±3% of the initial value | The terminal of capacitor shall be immersed in the melting solder. a. Solder temperature: 270±5°C b. Solder time: 3±0.5sec c. Test voltage: 150% of the rate voltage for 1min. |

CMPB Series

Metallized Polypropylene Film Capacitors (Encapsulated)

TRIGON
COMPONENTS

| | | | |
|----|---|---|--|
| 10 | Cold Resistance | (1) Appearance: No Visible Damage (2) Capacitance Change: $\leq 0\sim -10\%$ of The Initial Value | a. Test Temperature: -40°C (IEC 68-2-21) b. Test Times: 2Hrs |
| 11 | Dry Heat Resistance | (1) Appearance: No Visible Damage (2) Withstand Voltage: Normal (3) Capacitance Change: $\leq +5\sim -2\%$ of The Initial Value (4) Insulation Resistance: $\geq 50\%$ of The Rated Value | a. Test Temperature: $85^{\circ}\text{C} \pm 2^{\circ}\text{C}$ b. Test Times: 2 Hrs. |
| 12 | Humidity Resistance | (1) Appearance : No Visible Damage (2) Withstand Voltage: Normal (3) Capacitance Change: $\leq \pm 10\%$ of The Initial Value (4) Insulation Resistance: $\geq 50\%$ of The Rated Value (5) DF ($\tan\delta$) ≤ 0.005 | a. Test Temperature: $40^{\circ}\text{C} \pm 2^{\circ}\text{C}$ b. Relative Humidity: 90 ~ 95% c. Test Times: 240 \pm 8 Hrs d. Test Voltage: 130% of The Rated Voltage for 1 Minute. |
| 13 | Heat Resistance (Charge & Discharge) | (1) Appearance: No Visible Damage (2) DF ($\tan\delta$) ≤ 0.005 (3) Capacitance Change: $\pm 10\%$ of The Initial Value. (4) Insulation Resistance: $\geq 50\%$ of the rated value | a. Test Voltage: Rated Voltage Charge for 2 Sec. Discharge for 2 Sec. Repeated For 100,000 \pm 1000 Cycles b. Test Temperature: $85^{\circ}\text{C} \pm 2^{\circ}\text{C}$ |
| 14 | Heat Resistance (Continuous) | (1) Appearance : No Visible Damage (2) DF ($\tan\delta$) ≤ 0.005 (3) Capacitance Change : $\pm 7\%$ of The Initial Value (4) Insulation Resistance: $\geq 50\%$ of the rated value | a. Test Voltage: 125% of The Rated Voltage. b. Test Temperature: $85^{\circ}\text{C} \pm 2^{\circ}\text{C}$. c. Test Times: 500 \pm 24Hrs |

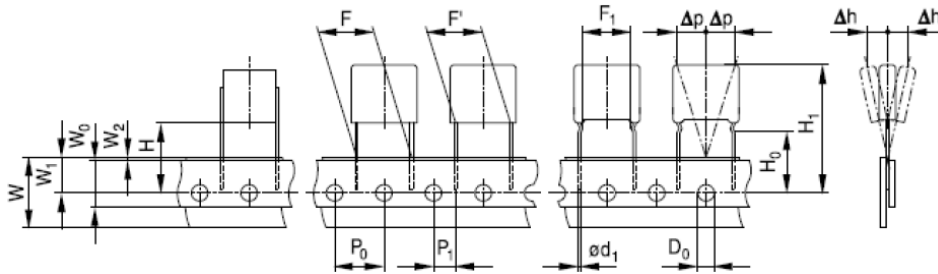
CMPB Series

Metallized Polypropylene Film Capacitors (Encapsulated)

TRIGON
COMPONENTS

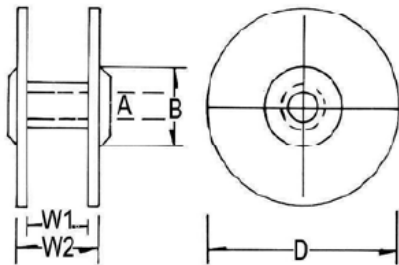
Package Information

Standard 15 mm
 $P_0 = 12.7$ mm



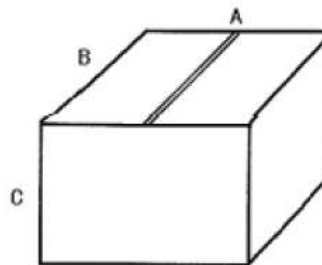
| | | | | | | | | | |
|----------------|---------------|-----------|-------------|----------------|----------------|----------------|----------------|----------------|------------|
| Symbol | $\text{Ø}d_1$ | D_0 | F | F' | F ₁ | H | H ₀ | H ₁ | |
| Dimension (mm) | 0.6; 0.8 | 4.0 | 15.0 | 15.0 | 12.1 | 18.5 | 16.0 | 37.5 | |
| Tolerance (mm) | ± 0.05 | ± 0.2 | $+0.6/-0.1$ | ± 0.4 | ± 0.1 | ± 0.5 | ± 0.5 | max. | |
| Symbol | P_0 | P_1 | W | W ₀ | W ₁ | W ₂ | t | Δh | Δp |
| Dimension (mm) | 12.7 | 5.2 | 18.0 | 12.0 | 9.0 | 0.5 | 0.7 | 0 | 0 |
| Tolerance (mm) | ± 0.2 | ± 0.7 | ± 0.5 | ± 0.5 | ± 0.5 | ± 0.05 | ± 0.2 | | |

Reel



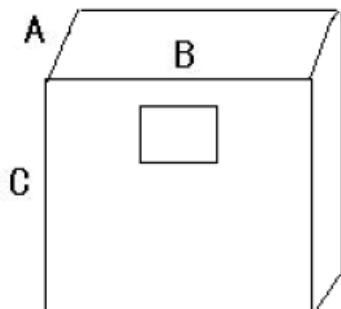
A: 30 ± 3
B: 90 Min
D: 345 Max
W1: $37 + 2 - 2$ mm
W2: 55 Max

Carton



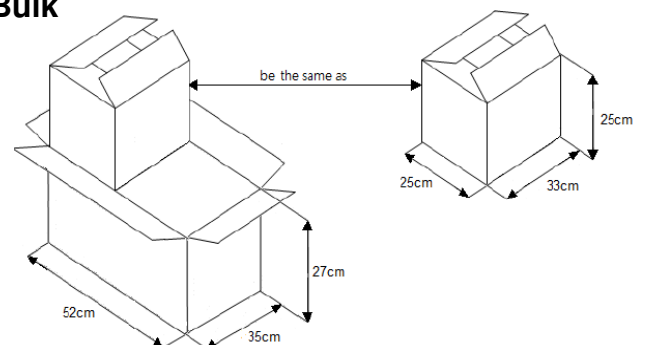
A: 330 Max
B: 360 Max
C: 360 Max

Ammo



A: 60 mm
B: 355 mm
C: 355 mm

Bulk



| PCS/BAG | PCS/Small bag 52*27*35 | PCS/big bag 33*25*25 |
|---------|---------------------------|-------------------------|
| 300 | 3000 | 6000 |
| 500 | 5000 | 10000 |