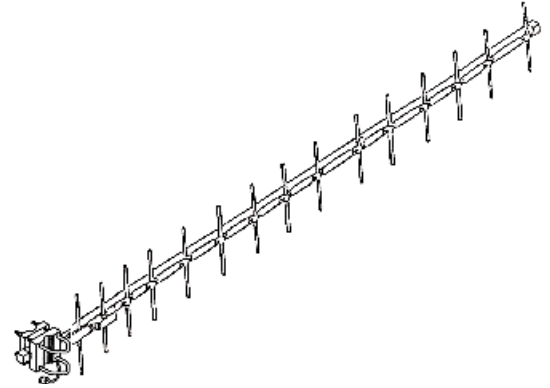


ANTENNA TECHNOLOGIES LIMITED COMPANY

# Model 915HNM Heavy Duty Yagi Antenna

## Key Features

- Easily stacked for 15 to 18 dBi gain
- Custom stacking frames and harnesses are available
- High strength square aluminum boom for enhanced survivability
- “EverSealed”** feed and a flexible feedline interface with custom cable lengths available for quick and easy installation
- Heavy duty construction



Electrical Specifications	915HNM
Frequency Range, MHz	902-928
Gain, dBd	13 minimum
Front to Back Ratio, dB	16 minimum; 20 typical
VSWR (50 Ohms)	1.2:1 typical
1.5:1 Bandwidth MHz	26 minimum; 40 typical
3 dB Beamwidth E/H Planes, degrees	30/32
Maximum Power, watts	50*
Cable type/length	RG58, 1 (.3)
Connector	N type Male
Polarization	Horizontal or Vertical



Mechanical Specifications	915HNM
Number of Elements	15
Boom Length, feet (m)	5.1 (1.55)
Boom Material	1.0" by 1.0 square tube 6061-T6 aluminum
Element Material	.25" diameter 6061-T6 aluminum rod
Mast Diameter, inches, (cm)	1.25-2.00 (3.2-5.1)
Mounting	Rear
Wind Surface Areas, feet	.59 (.055)
Wind Survival, mph (kph)	125 (200)
Weight, pounds (kg)	4.0 (1.8)

22560 Glenn Drive #114 | Sterling, Virginia 20164  
[www.atlcllc.com](http://www.atlcllc.com) [sales@atlcllc.com](mailto:sales@atlcllc.com)  
Office: 703-450-5517

*ATLC products for military use may be subject to U.S. ITAR EXPORT CONTROLS, an export license may be required.*