

# Flush-type connector - SACC-E-MINFS-4CON-PG13/0.5 - 1521423

Please be informed that the data shown in this PDF Document is generated from our Online Catalog. Please find the complete data in the user's documentation. Our General Terms of Use for Downloads are valid (<http://download.phoenixcontact.com>)



Sensor/actuator flush-type socket, 4-pos., 7/8", front mounting with Pg13.5 fastening thread, with 0.5 m PVC litz wire, 4 x 0.75 mm<sup>2</sup>



## Key commercial data

Packing unit	1
Minimum order quantity	1
Catalog page	Page 37 (PC-2011)
GTIN	 4 017918 949648
Custom tariff number	85366990
Country of origin	GERMANY

## Technical data

### General data

Rated current at 40°C	9 A
Rated voltage	250 V
Number of positions	4
Volume resistance	≤ 5 mΩ
Insulation resistance	≥ 100 MΩ
Length of cable	0.5 m
Ambient temperature (operation)	-40 °C ... 85 °C (female)

### General characteristics

Coding	A - standard
Surge voltage category	II
Pollution degree	3
Degree of protection	IP67
Contact material	CuZn
Contact surface material	Au
Contact carrier material	PUR
Material, knurls	Zinc die-cast, nickel-plated
Sealing material	Viton

# Flush-type connector - SACC-E-MINFS-4CON-PG13/0.5 - 1521423

## Technical data

### General characteristics

Mounting type	Front mounting Pg13.5
Connection method	Individual wires
Status display	No

### Conductor data

Cable type	PVC litz wire
Conductor cross section	0.75 mm <sup>2</sup>
AWG signal line	18
Conductor structure signal line	24x 0.20 mm
Core diameter including insulation	2.7 mm
Thickness, insulation	0.85 mm (Core insulation)
Wire colors	brown, white, blue, black
Material conductor insulation	PE
Ambient temperature (operation)	-40 °C ... 85 °C (cable, fixed installation)

## Classifications

### eclass

eCl@ss 4.0	27140815
eCl@ss 4.1	27140815
eCl@ss 5.0	27143423
eCl@ss 5.1	27143423
eCl@ss 6.0	27143423
eCl@ss 7.0	27449001

### etim

ETIM 2.0	EC001297
ETIM 3.0	EC002061
ETIM 4.0	EC002061

### unspsc

UNSPSC 6.01	31251501
UNSPSC 7.0901	31251501
UNSPSC 11	31251501
UNSPSC 12.01	31251501
UNSPSC 13.2	31251501

## Approvals

### Approvals

#### Approvals

UL Recognized / cUL Recognized / GOST / cULus Recognized

# Flush-type connector - SACC-E-MINFS-4CON-PG13/0.5 - 1521423

## Approvals

Ex Approvals

Approvals submitted

## Approval details

UL Recognized	
mm <sup>2</sup> /AWG/kcmil	20
Nominal current I <sub>N</sub>	8 A
Nominal voltage U <sub>N</sub>	600 V

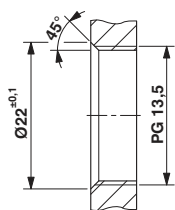
cUL Recognized	
mm <sup>2</sup> /AWG/kcmil	20
Nominal current I <sub>N</sub>	8 A
Nominal voltage U <sub>N</sub>	600 V

GOST	
------	--

cULus Recognized	
------------------	--

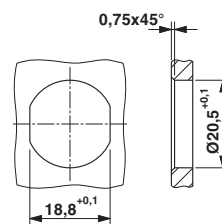
## Drawings

Dimensioned drawing



Mounting panel with thread

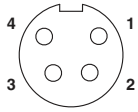
Dimensioned drawing



Mounting panel with feed-through hole

# Flush-type connector - SACC-E-MINFS-4CON-PG13/0.5 - 1521423

Schematic diagram



Pin assignment, socket, 7/8"-16UNF, 4-pos., view of female side

# Flush-type connector - SACC-E-MINFS-4CON-PG13/0.5 - 1521423

Dimensioned drawing

