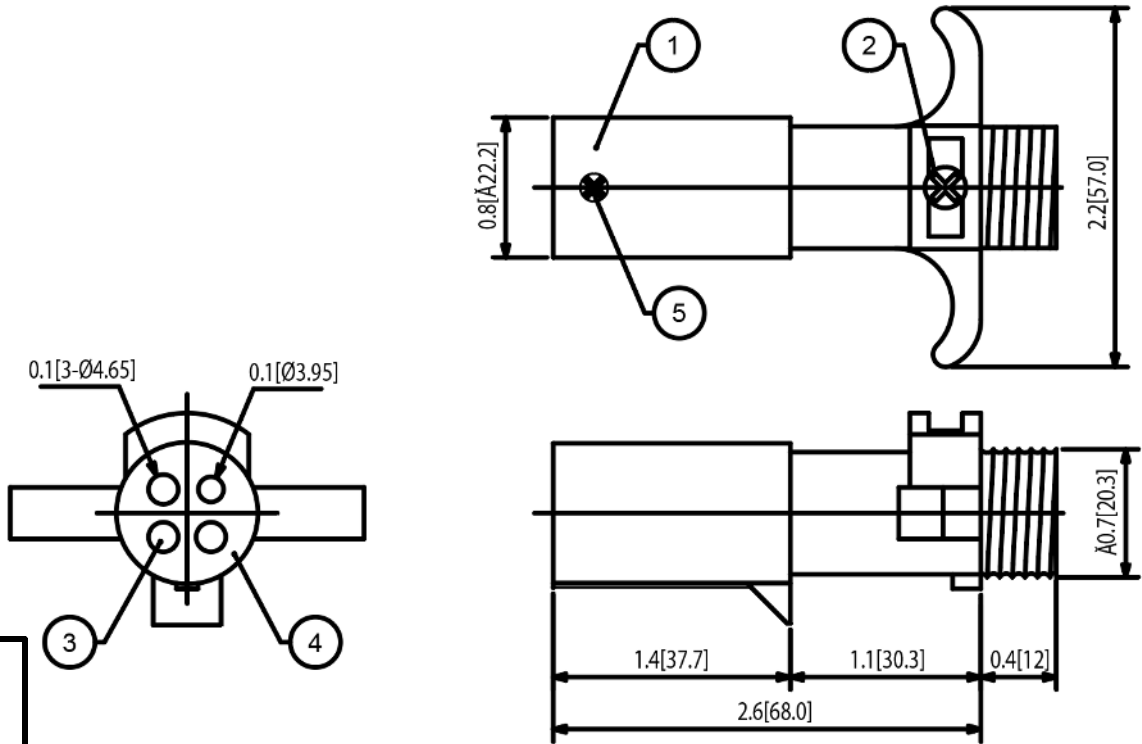


**Mechanical Dimensions: Inches [mm]**

Tolerances  $\pm 0.012$  [0.3] Unless Otherwise Specified



**TOLERANCES:**  
 1mm~5mm:±0.1  
 6mm~20mm:±0.2  
 21mm~50mm:±0.3  
 51mm~100mm:±0.5  
**ANGLES:±1°**

**Wiring Color Codes**

**A.T.A & S.A.E WIRING CODES RECOMMENDED STANDARD**

CIRCUITS	POLE WIRING COLOR CODE
Ground Return	White
Right Turns & Brake Lights	Green
Left Turns & Brake Lights	Yellow or Red
Tail Lights	Brown

**Material Specifications**

ITEM#	NAME	MATERIAL
1	PLUG SHELL	ZINC
2	SET SCREW	IRON
3	TERMINALS	BRASS
4	TERMINALS BASE	NYLON
5	BASE SET SCREW	IRON

Rev	Date of issue	Revision Notes	Designed	Approved
A	08-12-2019	Initial Drawing	RC	OH