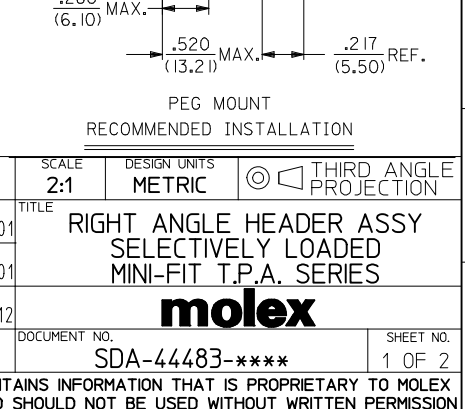
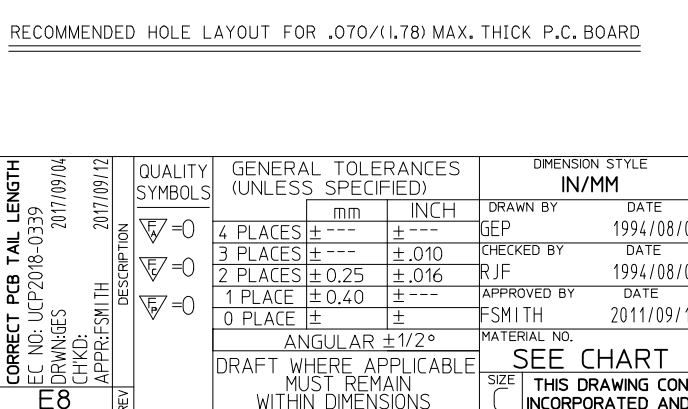
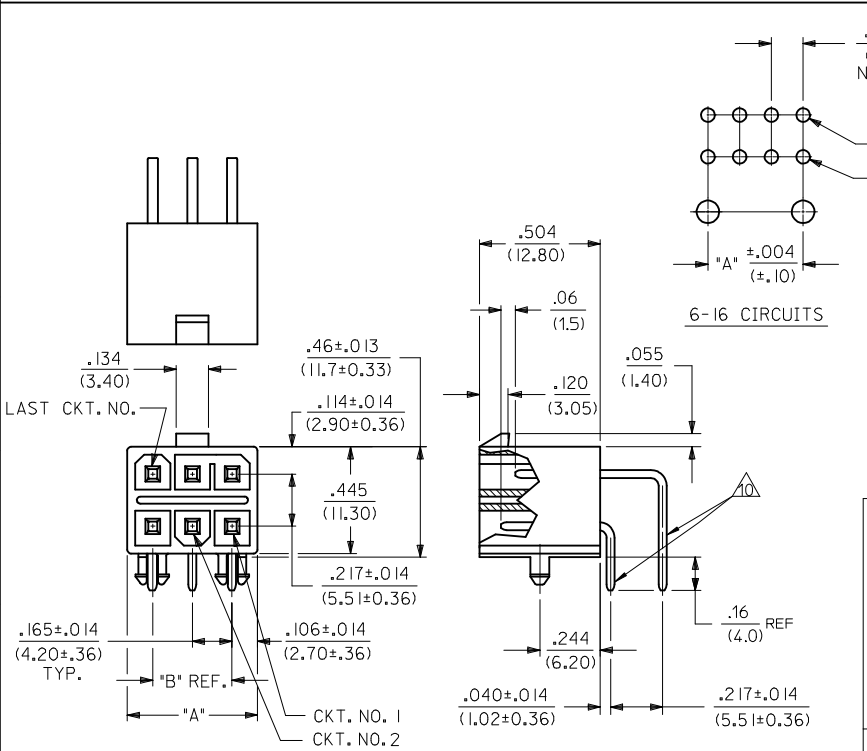
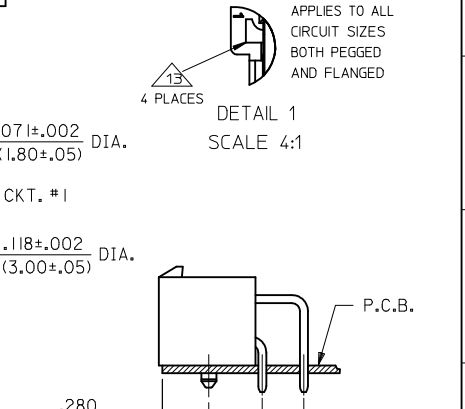
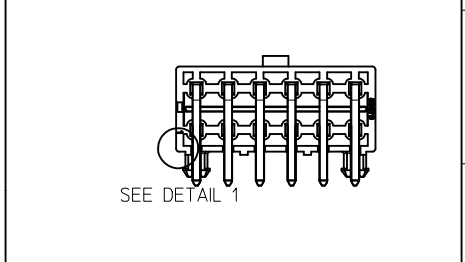
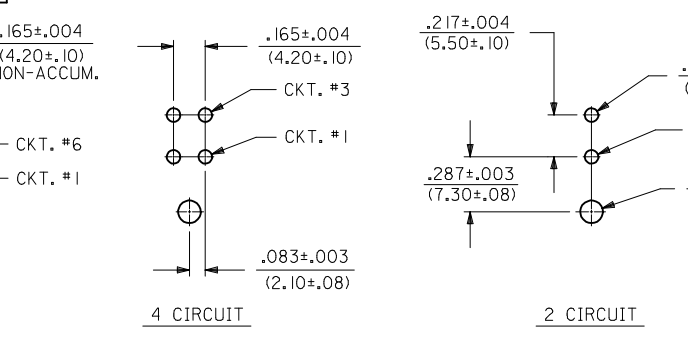
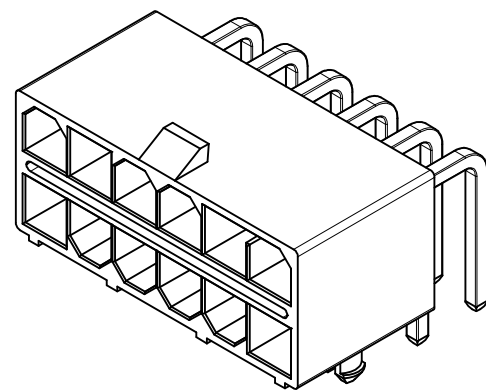


CKT. SIZE	DIM. "A"	DIM. "B"	DIM. "C"	DIM. "D"
2	.213 (5.40)	—	.606 (15.40)	.354 (9.00)
4	.378 (9.60)	.165 (4.20)	.772 (19.60)	.520 (13.20)
6	.543 (13.80)	.331 (8.40)	.937 (23.80)	.685 (17.40)
8	.709 (18.00)	.496 (12.60)	1.102 (28.00)	.850 (21.60)
10	.874 (22.20)	.661 (16.80)	1.268 (32.20)	1.016 (25.80)
12	1.039 (26.40)	.827 (21.00)	1.433 (36.40)	1.181 (30.00)
14	1.205 (30.60)	.992 (25.20)	1.598 (40.60)	1.346 (34.20)
16	1.370 (34.80)	1.157 (29.40)	1.764 (44.80)	1.512 (38.40)



CORRECT PCB TAIL LENGTH EC NO: UCP2018-0339 DRAWINGS 2017/09/04 CHKD: APPR:FSMITH E8	QUALITY SYMBOLS ▽=0 ▽=0 ▽=0	GENERAL TOLERANCES (UNLESS SPECIFIED)		DIMENSION STYLE IN/MM		SCALE 2:1	DESIGN UNITS METRIC	THIRD ANGLE PROJECTION	
		mm	INCH	DRAWN BY GEP	DATE 1994/08/01	TITLE	RIGHT ANGLE HEADER ASSY SELECTIVELY LOADED MINI-FIT T.P.A. SERIES		
DRAFT WHERE APPLICABLE MUST REMAIN WITHIN DIMENSIONS		ANGULAR ±1/2°		MATERIAL NO. SEE CHART		DOCUMENT NO. SDA-44483-****		SHEET NO. 1 OF 2	
THIS DRAWING CONTAINS INFORMATION THAT IS PROPRIETARY TO MOLEX INCORPORATED AND SHOULD NOT BE USED WITHOUT WRITTEN PERMISSION									

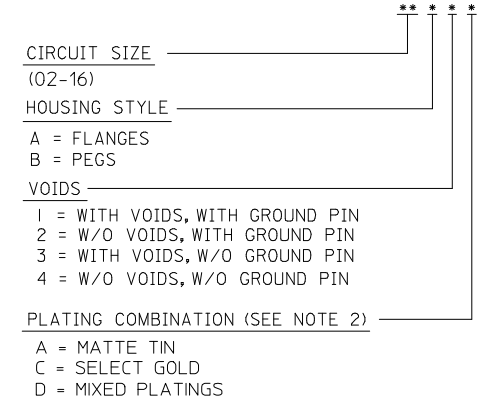
ITEM NO.	CHARACTERISTIC DESCRIPTION	CKT. SIZE	TERMINAL VERSION REQUIRED AT EACH CIRCUIT LOCATION: (SEE CODES BELOW)																PACKAGING TYPE
			1	2	3	4	5	6	7	8	9	10	11	12	13	14	15	16	
44483-0001	I2A1C	I2	5	5	5	6	5	5	5	5	5	-	5	5	-	-	-	-	BULK
44483-0002	I2A2C	I2	5	5	5	6	5	5	5	5	5	5	5	5	-	-	-	-	BULK
44483-0003	I2A1C	I2	5	5	5	6	5	5	5	5	5	5	5	-	-	-	-	TRAY	
44483-0004	04A2C	04	5	5	6	5	-	-	-	-	-	-	-	-	-	-	-	BULK	
44483-0005	04A2A	04	7	7	8	7	-	-	-	-	-	-	-	-	-	-	-	BULK	
44483-0006	I2A1C	I2	5	5	5	6	-	5	5	5	5	5	5	5	-	-	-	BULK	
44483-0007	I6A2A	I6	7	7	8	7	7	8	8	7	8	7	8	7	8	7	8	BULK	
44483-0008	I2A1C	I2	5	-	6	6	-	5	-	5	5	5	5	-	-	-	-	BULK	
44483-0009	06A2C	06	5	5	6	5	5	5	-	-	-	-	-	-	-	-	-	BULK	
44483-0010	06A1C	06	5	-	6	5	-	5	-	-	-	-	-	-	-	-	-	BULK	
44483-0011	I2A3A	I2	7	7	7	7	7	7	7	7	-	7	7	-	-	-	-	BULK	
44483-0012	I2A1C	I2	5	5	5	6	5	5	5	5	5	-	5	5	-	-	-	BULK	
44483-0013	I2A1C	I2	5	5	5	6	-	5	5	5	5	-	5	-	-	-	-	TRAY	
44483-0014	I2A4D	I2	7	7	7	7	7	7	5	7	7	7	7	7	-	-	-	TRAY	
44483-0015	I2B3A	I2	-	7	7	7	7	-	-	7	7	-	7	7	-	-	-	TRAY	
44483-0016	I2A2C	I2	6	6	5	5	6	6	6	6	5	5	6	6	-	-	-	TRAY	
44483-0017	04A1C	04	-	5	6	5	-	-	-	-	-	-	-	-	-	-	-	TRAY	
44483-0018	04A1C	04	5	-	6	5	-	-	-	-	-	-	-	-	-	-	-	TRAY	
44483-0019	04A1C	04	5	5	6	-	-	-	-	-	-	-	-	-	-	-	-	TRAY	
44483-0020	08A1C	08	6	V	5	5	V	5	V	5	-	-	-	-	-	-	-	TRAY	



O = OBSOLETE V = VOID

- NOTES:
- MATERIAL:
HOUSING: POLYESTER, UNFILLED, UL94 V-0, COLOR: BLACK
TERMINAL: BRASS
 - FINISH (TERMINAL):
SELECT GOLD = .000030/(.00076) MIN. GOLD OVER .000100/(.00254) MIN. SELECT MATTE TIN OVER .000050/(.00127) MIN. NICKEL OVERALL
MATTE TIN = .000100/(.00254) MIN MATTE TIN OVER .000050/(.00127) MIN NICKEL OVERALL
 - PRODUCT SPECIFICATION: PS-5556-003
 - PACKAGING: SEE CHART
TRAY PACKED PER: PK-44483-001
BULK PACKED PER: PK-30070-001
 - PART MATES WITH MINI-FIT T.P.A. RECEPTACLE 30067-*.
FLANGE MOUNT PART IS DESIGNED FOR USE WITH #4 OR M3 SELF TAPPING SCREWS.
 - SEE CHART ABOVE FOR STANDARD PIN, GROUND PIN AND VOID LOCATIONS.
 - PARTS ARE NOT TO BE MATED OR UNMATED WHILE CIRCUITS ARE LIVE.
 - PART IS NOT DESIGNED FOR CURRENT SHARING.
 - FORMING MARKS ARE ACCEPTABLE.
 - PART CONFORMS TO CLASS "B" REQUIREMENTS OF COSMETIC SPECIFICATION PS-45499-002.
 - DISCOLORATION IN THE BANDOLIER CARRIER AREA OF THE PIN IS INHERENT TO THE PLATING PROCESS AND IS DUE TO THE MASKING EFFECT OF THE CARRIER. THIS DISCOLORATION IS IN A NON-FUNCTIONAL AREA OF THE PIN AND WILL NOT AFFECT THE PERFORMANCE OF THE HEADER ASSEMBLY.
 - CORNER CORE-OUTS ARE OPTIONAL AND MAY OR MAY NOT BE PRESENT.
 - TEXT ON PART IS FOR REFERENCE ONLY. TEXT AND TEXT LOCATION MAY VARY DEPENDING ON PART NUMBER AND/OR TOOL.

CHARACTERISTICS LEGEND:



PIN I.D. CODES FOR CHART ABOVE
PIN TYPE & PLATING (SEE NOTE 2)
*- = VOID LOC.
*5 = STANDARD PIN, SELECT GOLD
*6 = GROUNDING PIN, SELECT GOLD
*7 = STANDARD PIN, MATTE TIN
*8 = GROUNDING PIN, MATTE TIN

SEE SHEET 1 EC NO: UCP2018-0339 DRWINGS 2017/09/04 CHKD: 2017/09/12 APPR:FSMITH DESCRIPTION	QUALITY SYMBOLS	GENERAL TOLERANCES (UNLESS SPECIFIED)	DIMENSION STYLE	SCALE	DESIGN UNITS	THIRD ANGLE PROJECTION
		mm INCH	IN/MM	2:1	METRIC	
		4 PLACES ± --- ± ---	DRAWN BY DATE	TITLE		
		3 PLACES ± --- ± .010	GEP 1994/08/01	RIGHT ANGLE HEADER ASSY		
	2 PLACES ± 0.25 ± .016	CHECKED BY DATE	SELECTIVELY LOADED			
	1 PLACE ± 0.40 ± ---	RJF 1994/08/01	MINI-FIT T.P.A. SERIES			
	0 PLACE ± ±	APPROVED BY DATE	molex			
		FSMITH 2011/09/12	DOCUMENT NO.			
			SDA-44483-****			
			SHEET NO.			
			2 OF 2			
			THIS DRAWING CONTAINS INFORMATION THAT IS PROPRIETARY TO MOLEX INCORPORATED AND SHOULD NOT BE USED WITHOUT WRITTEN PERMISSION			