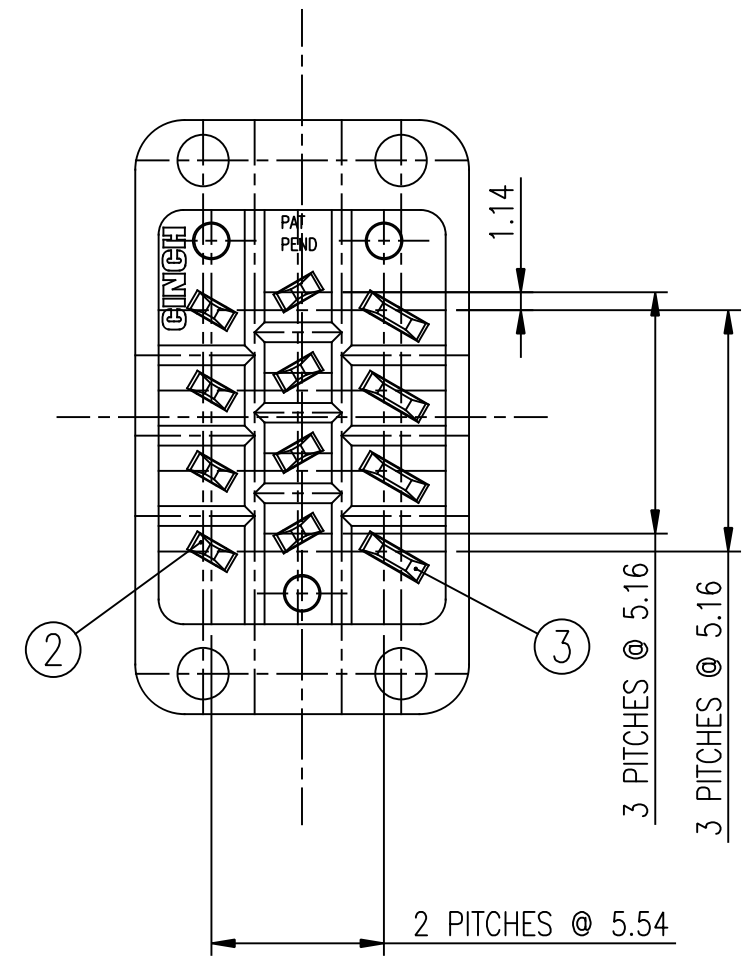
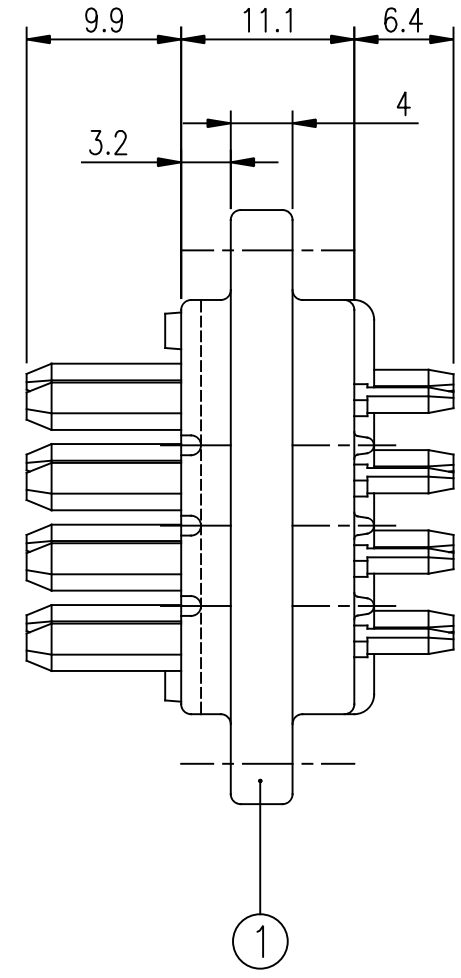
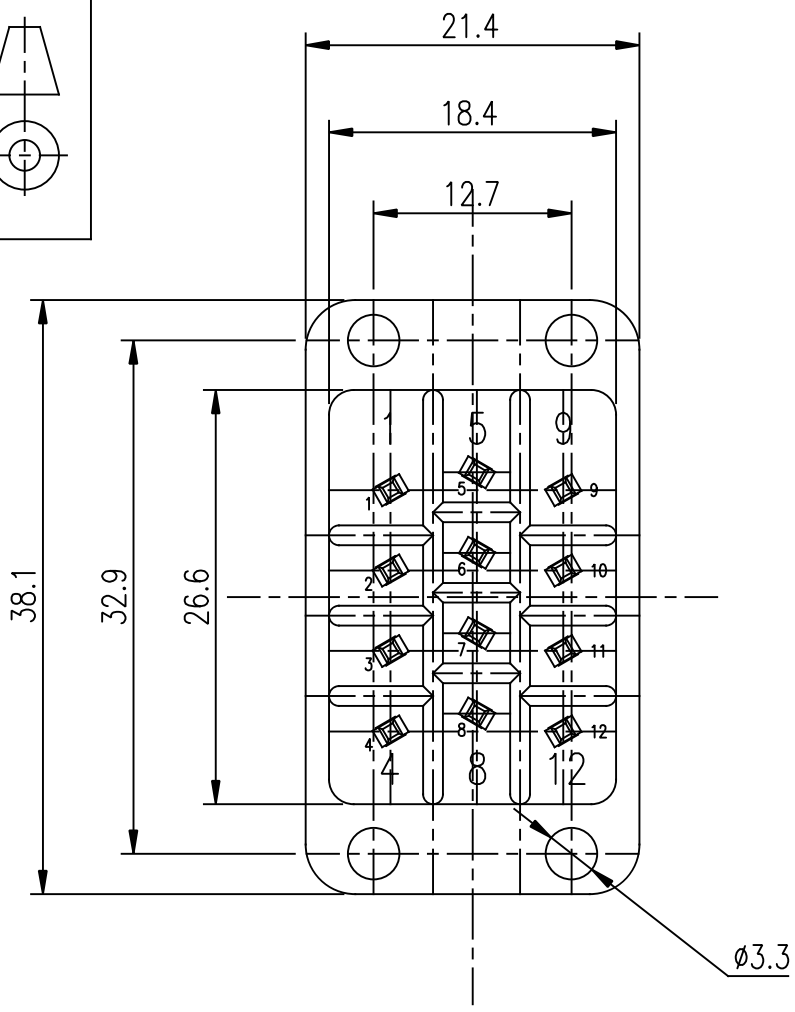


1	2	3	4	5	6	7	
CINCH Connectors Ltd. WORKSOP, ENGLAND							
A	JA					77848 00 000 000	SHEET 1 OF 1
RELEVANT SPEC.							
CAD No. G:JA7784800000000							
IF IN DOUBT - ASK ALL DIMENSIONS ARE IN mm							
B	C	D	E	F	G	H	J

CUSTOMER DRAWING ONLY.



NOTES:

- 1. ALL PINS TO BE STAKED IN POSITION AS SHOWN.
- 2. ALL DIMENSIONS ARE REFERENCE ONLY UNLESS STATED OTHERWISE.

THIS DRAWING IS COPYRIGHT AND IS ISSUED ON CONDITION IT IS NOT COPIED, REPRODUCED OR DISCLOSED TO A THIRD PARTY WITHOUT THE CONSENT IN WRITING OF CINCH CONNECTORS LTD. ATTENTION IS DRAWN TO THE FACT THAT THE ARTICLE DISCLOSED MAY BE COVERED BY BRITISH OR FOREIGN PATENTS, GRANTED OR PENDING OR REGISTERED DESIGN.

GENERAL TOLERANCE			TITLE J-TYPE		
12 WAY PLUG CONNECTOR ASSEMBLY			DRN. R. MUSCROFT	DATE 06.06.07	SCALE 2:1
			RAW MATERIAL		
			FINISHED HARDNESS	FINISH TREATMENT	FINISHED COLOUR
			APP'D	DATE	MOD No.
			CUST. ISS.	ISSUE	
				No. OFF	