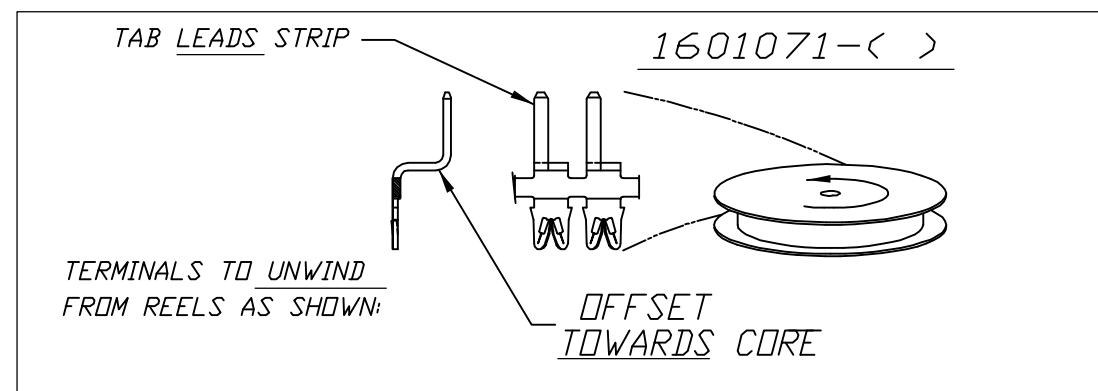
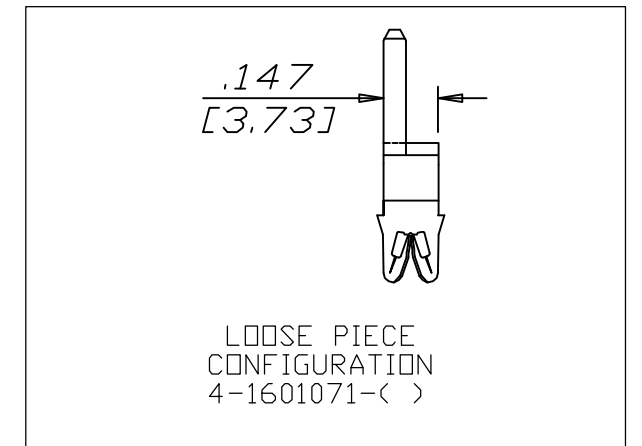
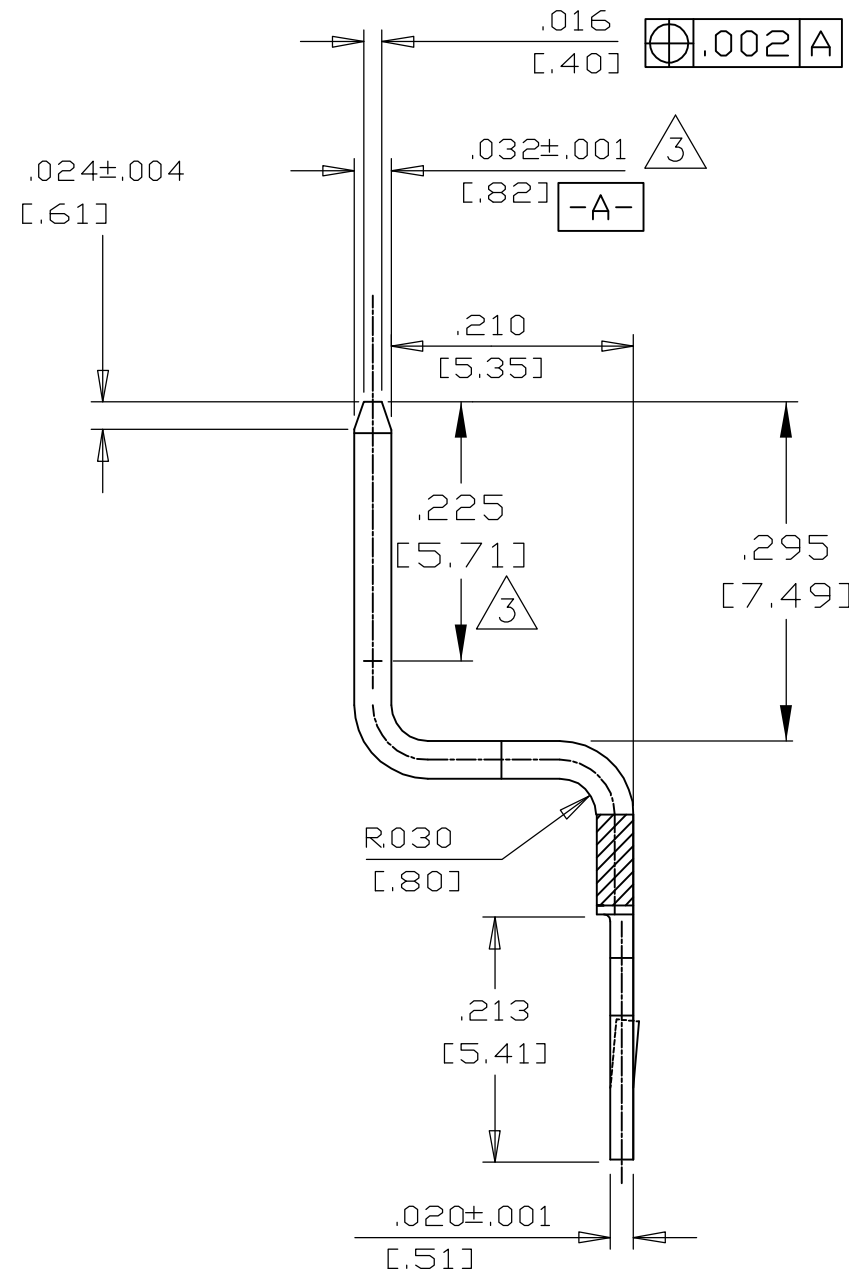
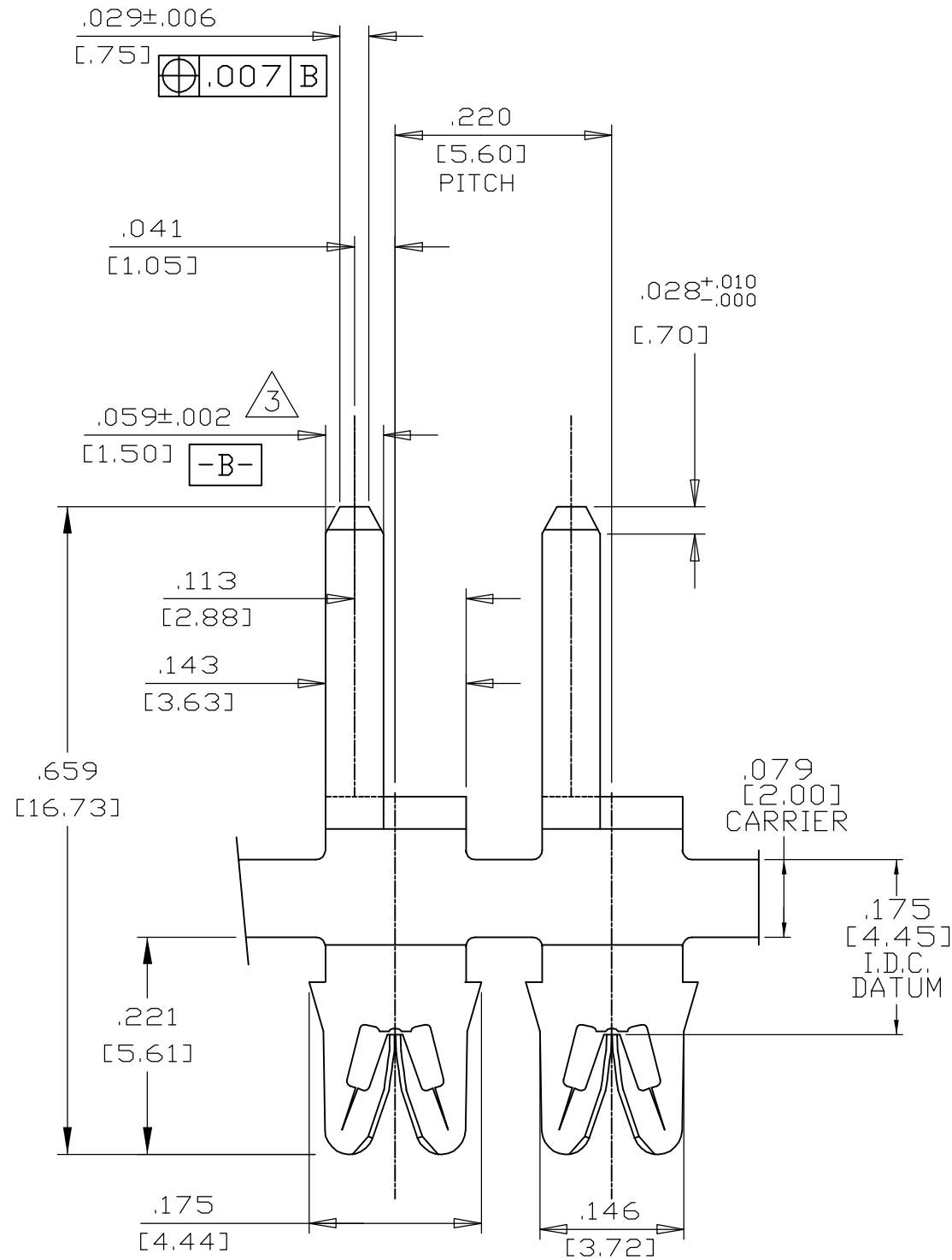
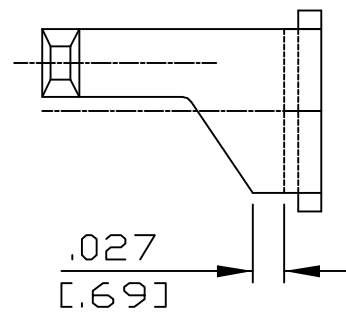


THIS DRAWING IS UNPUBLISHED. RELEASED FOR PUBLICATION  
 © COPYRIGHT BY TYCO ELECTRONICS CORPORATION. ALL RIGHTS RESERVED.

LOC		DIST		REVISIONS			
P	LTR	DESCRIPTION		DATE	DWN	APVD	
	A1	REVISED PER ECR-05-012061		17OCT05	MF	GJ	

- SPECIFICATIONS: MAGNET WIRE #34-#18 AWG  
.006 [0.16mm] - .040 [1.02mm] DIA COPPER.
- POCKET RECOMMENDATION: 1601431.
- MAINTAIN THICKNESS FOR THIS LENGTH AND COIN EDGES WITH NO BURRS.



-	-	-
-	-	-
-	-	-
-	-	-
Pre-Tin Plate over Copper Underplate	131-138-014	1601071-2
-	-	-
FINISH	REFERENCE PART NUMBER	TYCO PART NUMBER
THIS DRAWING IS A CONTROLLED DOCUMENT.	DWN 19FEB2002 MICHAEL S. FEHER	<b>tyco</b> Tyco Electronics Corporation
DIMENSIONS: INCHES	CHK 14FEB2002 KURT A. RANDOLPH	<b>Electronics</b> Harrisburg, PA 17105-3608
TOLERANCES UNLESS OTHERWISE SPECIFIED:	APVD 14FEB2002 KURT A. RANDOLPH	NAME BENT SIAMEZE TERMINAL
0 PLC ± -	PRODUCT SPEC 108-2085	SIZE CAGE CODE DRAWING NO RESTRICTED TO
1 PLC ± -	APPLICATION SPEC 408-8629	A2 00779 C=1601071
2 PLC ± .01[0.25]	WEIGHT -	SCALE 1:1 SHEET 1 of 1 REV A1
3 PLC ± .005[0.13]	CUSTOMER DRAWING	
4 PLC ± -		
ANGLES ± 2'		
MATERIAL BRASS, 1/2 HARD	SEE TABLE	