

4

3

2

1

THIS DRAWING IS UNPUBLISHED. RELEASED FOR PUBLICATION
 © COPYRIGHT BY TYCO ELECTRONICS CORPORATION. ALL RIGHTS RESERVED.

LOC	DIST	REVISIONS			
P	LTR	DESCRIPTION	DATE	DWN	APVD
GP	00	REVISED PER ECO-07-004221	30MAR07	JDP	EDB

Dimensions: 26.80, 13.40, 0.40 TYP, 0.80 TYP, 1.60 TYP, 14.68, 31.65, 0.40 TYP, 0.80 TYP, 1.60 TYP, 14.68, 31.65, 0.40 TYP, 0.80 TYP, 1.60 TYP, 14.68, 31.65.

Callouts: -B-, SHELL, MATING FACE, 9, t OF DATUM A.

1 HOUSING & PIN SPACER: THERMOPLASTIC, BLACK, UL 94V-0 RATED. SHELL: CARBON STEEL. CONTACTS: PHOSPHOR BRONZE. BRACKETS: STEEL.

2 SHELL: 5.08 μm MIN NICKEL OVER 2.54 μm MIN COPPER. CONTACTS: 0.76 μm MIN GOLD ON MATING END, 3.75 MIN TIN-LEAD ON SOLDER TAILS, BOTH OVER 1.27 μm MIN NICKEL ON ENTIRE CONTACT. BRACKETS: TIN PLATED.

3 CONTACTS DESIGNED FOR USE ON 1.60±0.15 THICK PC BOARD WITH PLATED THRU MOUNTING HOLES.

4 RECEPTACLE ASSEMBLY DESIGNED FOR USE WITH 1.12±0.08 THICK PANEL.

5 DATUMS AND DIMENSIONS ESTABLISHED BY CUSTOMER.

6 POSITION TOLERANCE APPLIES AT CONTACT TIP ONLY.

7 CONTACTS DESIGNED FOR USE ON 2.35±0.15 THICK PC BOARD WITH PLATED THRU MOUNTING HOLES.

8 MAXIMUM TORQUE 0.45 N-M.

9 DATE CODE MARKED IN APPROXIMATE AREA SHOWN.

Dimensions: 42.70, 37.70, 28.30±0.05, 6.00, 3.50, 3.30, 2.08, 6.84, 0.254±0.013, 0.20, 0.152, 0.389 TYP, 1.35 REF, 3.46, 5.20, 0.20, 5.33 TYP, 1.15 TYP, 1.20 TYP, 1.15 TYP, 0.30±0.03, 0.20, 68 PLC, 68 PLC INDIVIDUALLY, 34 PLC INDIVIDUALLY.

Callouts: -A-, -C-, M2 X 0.4 - 4H 2 PLC, BRACKET 2 PLC, CONTACT 68 PLC, t OF DATUM A, t OF DATUM K, SEE DETAIL, F.

Dimensions: 0.389 TYP, 3.46, 5.20, 0.20, 5.33 TYP, 1.15 TYP, 1.20 TYP, 1.15 TYP, 0.30±0.03, 0.20, 68 PLC, 68 PLC INDIVIDUALLY, 34 PLC INDIVIDUALLY.

Callouts: HOUSING, PIN SPACER, t OF DATUM K, SEE DETAIL, F.

SUPERSEDED BY 796055-1

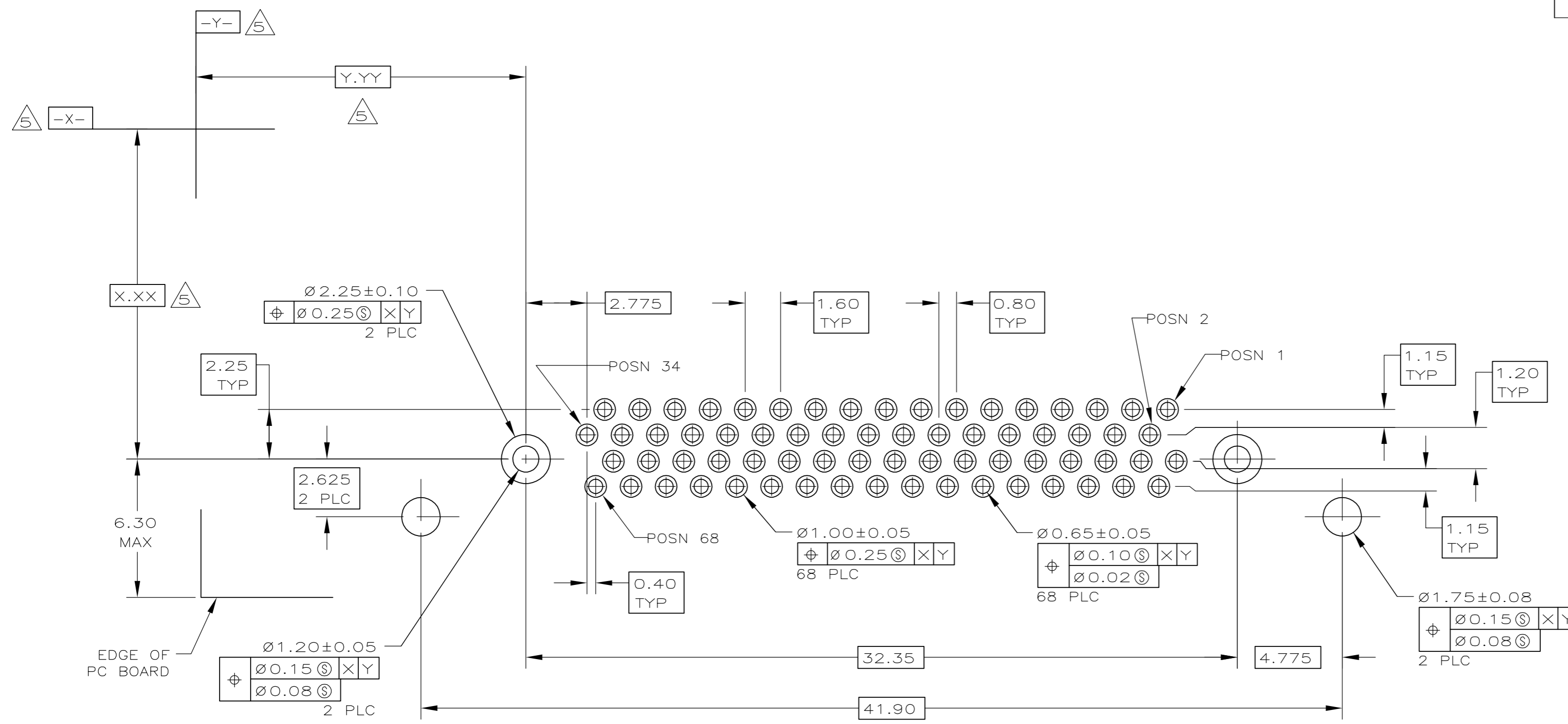
REVISIONS	DATE	PART NUMBER
3	2.27	796055-3
7	3.55	796055-2
3	2.27	796055-1
REMARKS	F	PART NUMBER

THIS DRAWING IS A CONTROLLED DOCUMENT.		DWN T.SHUEY 09MAR05	Tyco Electronics Corporation Harrisburg, PA 17105-3608	
DIMENSIONS: mm		CHK J.GERACE 09MAR05	NAME	
TOLERANCES UNLESS OTHERWISE SPECIFIED:		APVD M.WALMSLEY 09MAR05	PRODUCT SPEC	
0 PLC ± -	1 PLC ± -	108-1471-1		
2 PLC ± 0.13	3 PLC ± -	APPLICATION SPEC		
4 PLC ± -	ANGLES ± 1°	114-6057		
MATERIAL 1	FINISH 2	WEIGHT -	SIZE A2	CAGE CODE 00779
CUSTOMER DRAWING		SCALE 5:1	DRAWING NO C=796055	RESTRICTED TO -
		SHEET 1 of 2	REV P	

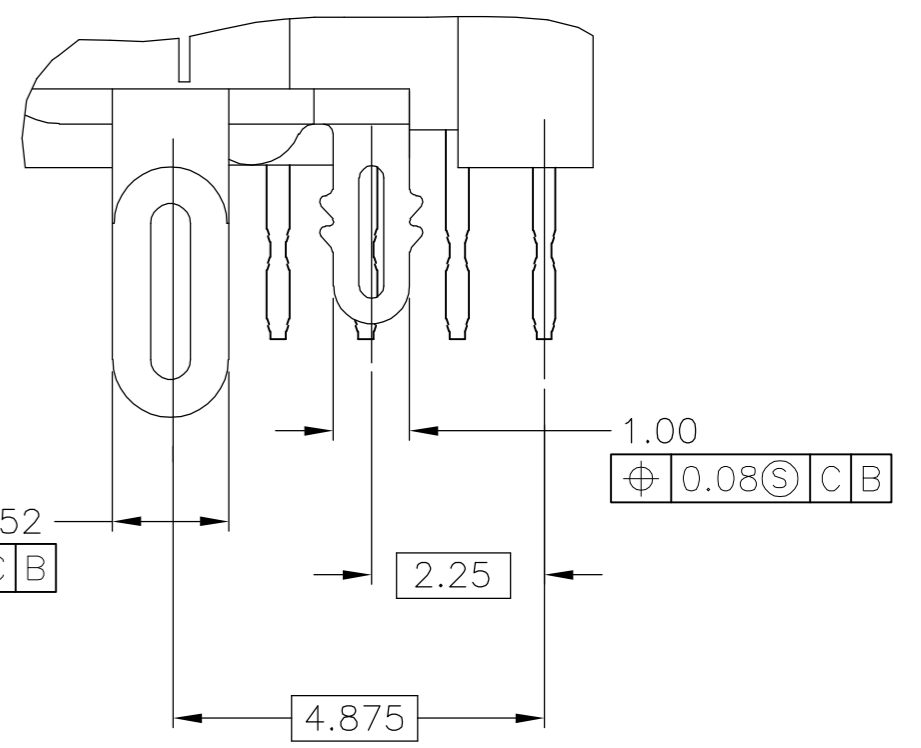
AMP 1471-9 REV 31MAR2000

THIS DRAWING IS UNPUBLISHED. RELEASED FOR PUBLICATION
 © COPYRIGHT BY TYCO ELECTRONICS CORPORATION. ALL RIGHTS RESERVED.

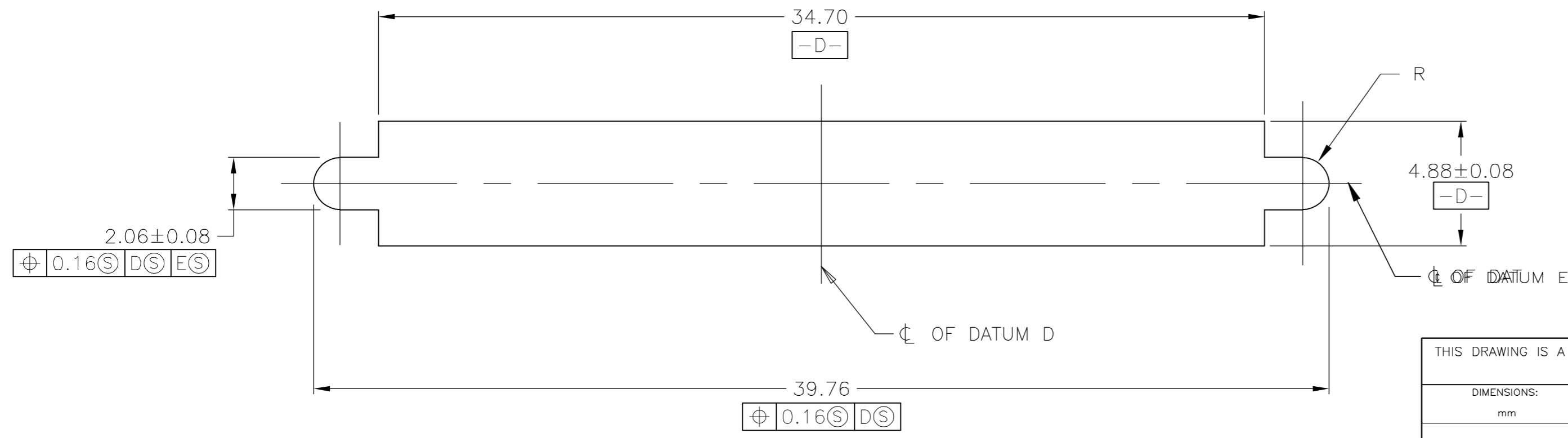
LOC	DIST	REVISIONS					
GP	00	P	LTR	DESCRIPTION	DATE	DWN	APVD
		-		SEE SHEET 1	-	-	-



PC BOARD MOUNTING DIMENSIONS



DETAIL Z
SCALE 10:1



PANEL CUT-OUT DIMENSIONS

THIS DRAWING IS A CONTROLLED DOCUMENT.		DWN	09MAR05	 Tyco Electronics Corporation Harrisburg, PA 17105-3608			
DIMENSIONS: mm		CHK	09MAR05				
TOLERANCES UNLESS OTHERWISE SPECIFIED:		APVD	09MAR05				
0 PLC ± - 1 PLC ± - 2 PLC ± 0.13 3 PLC ± - 4 PLC ± - ANGLES ± 1° FINISH -		NAME	M.WALMSLEY				
MATERIAL		PRODUCT SPEC	-	RECEPTACLE ASSEMBLY, 68 POSITION, SHIELDED, RIGHT ANGLE, CHAMP 0.8mm			
		APPLICATION SPEC	-	SIZE	CAGE CODE	DRAWING NO	RESTRICTED TO
		WEIGHT	-	A2	00779	C=796055	-
		CUSTOMER DRAWING	-	SCALE	6:1	SHEET	2 OF 2
						REV	P