

MHF4 Pigtail Cables

I-PEX MHF4 To SMA Female Bulkhead Jack 1.13 Coax Cable



Applications

- SMA Female to MHF-4 jumper cable
- RF connections for radios and antennas
- MHF4 LK ideal for continuous shock & vibration applications

Attenuation

Frequency (GHz)	1 GHz	2 GHz	3 GHz	4 GHz	5 GHz	6 GHz
dB 1/m	2.2	3.1	3.9	4.5	5.0	5.5

Key Features

- Low Loss coaxial cable
- OD 1.13mm
- Color Grey
- Various cable lengths available
- RoHS and REACH compliant
- Crimp strength 20N minimum
- MHF4 locking solution available

Electrical Specifications

Suggested working frequency:	0 to 6 GHz
Nominal Impedance:	50 +/- 3 Ω
Maximum operating voltage:	30 V
VSWR:	-15 dB (Max. between 0 and 6 GHz)

Environmental Specifications

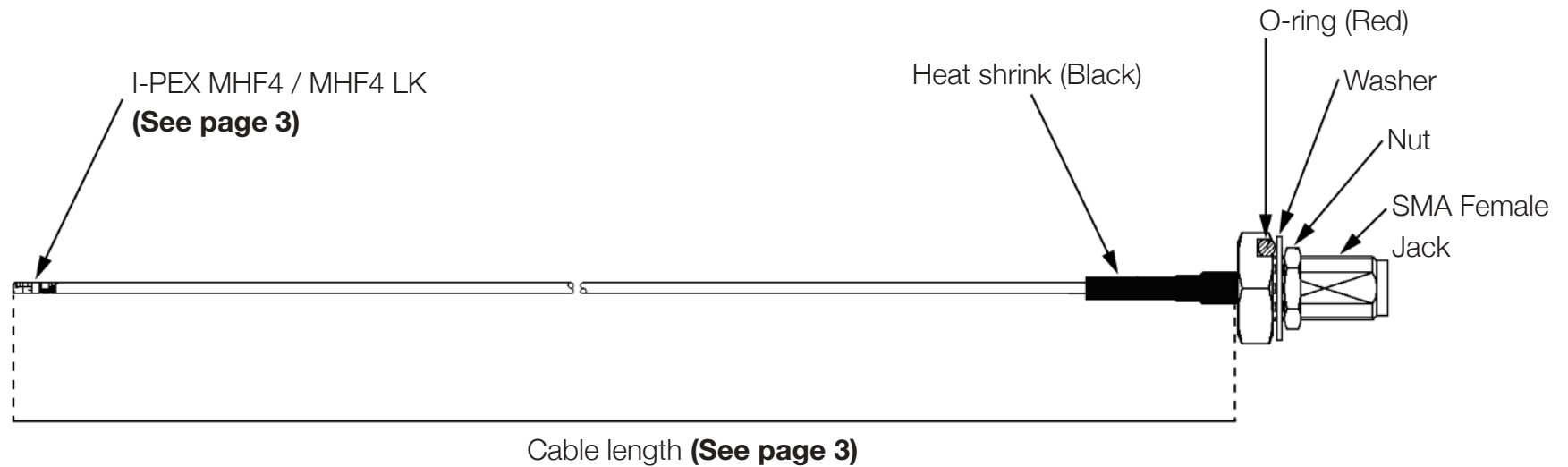
Operating Temperature:	-20 to +60 °C
Storage Temperature:	-20 to +60 °C
RoHS Compliant:	YES
REACH Compliant:	YES

MHF4 Pigtail Cables

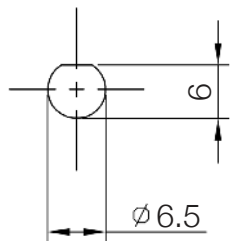
I-PEX MHF4 To SMA Female Bulkhead Jack 1.13 Coax Cable

Mechanical Drawing

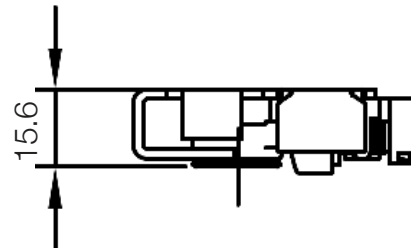
Note: The O-ring is applicable to the IP67 models.



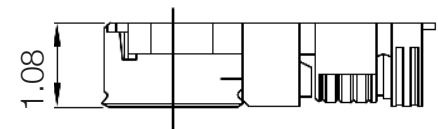
RECOMMENDED MOUNTING HOLE



MHF 4L LK PLUG 3:1



MHF 4L PLUG 8:1



MHF4 Pigtail Cables

I-PEX MHF4 To SMA Female Bulkhead Jack 1.13 Coax Cable

Mechanical Specifications

Product	Length (mm)	Description	Connector 1	Connector 2	Mounting Type
ASMG003XB113S11	30	I-PEX MHF4 TO SMA FEMALE BULKHEAD 1.13 CABLE	I-PEX/MHF4		REAR MOUNT
ASMG005XB113S11	50				
ASMG0075XB113S11	75				
ASMG010XB113S11	100				
ASMG0125XB113S11	125				
ASMG015XB113S11	150				
ASMG003XA113S11	30				FRONT MOUNT
ASMG005XA113S11	50				
ASMG0075XA113S11	75				
ASMG010XA113S11	100				
ASMG0125XA113S11	125				
ASMG015XA113S11	150				
ASMG003XD113S11	30	IP67 I-PEX MHF4 TO SMA FEMALE BULKHEAD 1.13 CABLE	IP67/I-PEX/MHF4	SMAF BLKHD	REAR MOUNT
ASMG005XD113S11	50				
ASMG0075XD113S11	75				
ASMG010XD113S11	100				
ASMG0125XD113S11	125				
ASMG015XD113S11	150				
ASMG003XC113S11	30				FRONT MOUNT
ASMG005XC113S11	50				
ASMG0075XC113S11	75				
ASMG010XC113S11	100				
ASMG0125XC113S11	125				
ASMG015XC113S11	150				
ASMGAL010XC113S11	100	IP67 I-PEX MHF4 LK TO SMA FEMALE BULKHEAD 1.13 CABLE	IP67/I-PEX/MHF4 LK		REAR MOUNT/LOCKING MECHANISM
ASMG LKL010XC137S11	100	IP67 I-PEX MHF LK TO SMA FEMALE BULKHEAD 1.13 CABLE	IP67/I-PEX/MHF LK		REAR MOUNT/LOCKING MECHANISM