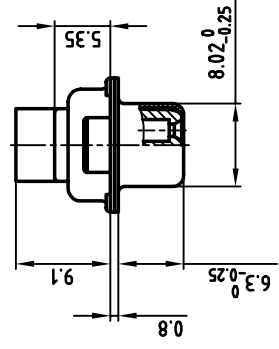
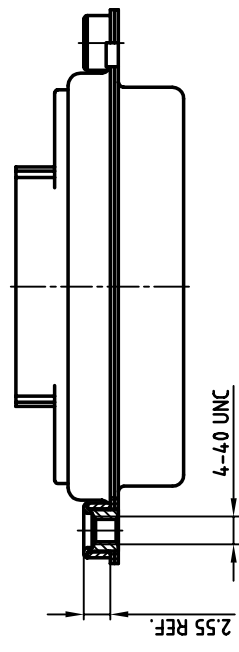
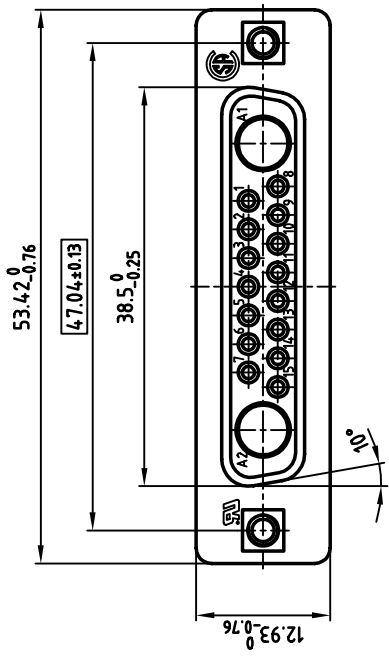


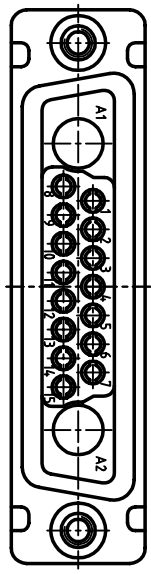
used for: D-SUB COMBINATION CRIMP



**NOTES:**

1. METALSHELLS: STEEL; min. 320µ" TIN
2. INSULATORS: PBT GF UL 94 V-0, BLACK
3. THREADED INSERT: COPPER ALLOY; min. 200µ" TIN over 80µ" NICKEL
4. COLLAR: COPPER ALLOY; min. 200µ" TIN over 80µ" NICKEL
5. MAXIMUM TORQUE VALUE FOR THREAD: 6" LBS
6.   = CRITICAL DIMENSION: SPC

Directive 2002/95/EC  
"RoHS"  
Compliant



THIS DRAWING MAY NOT BE COPIED OR REPRODUCED IN ANY WAY, AND MAY NOT BE PASSED ON TO A THIRD PARTY WITHOUT WRITTEN PERMISSION. OWNERSHIP AND COPYRIGHT OF CONEC GMBH DO NOT ALTER CAD DRAWING BY HAND

| tolerance |  | name  |        | date   |  | date |  | name |  |
|-----------|--|-------|--------|--------|--|------|--|------|--|
| 2001      |  | drawn | 17.05. | 17.05. |  |      |  |      |  |
|           |  | appd. | 17.05. |        |  |      |  |      |  |
|           |  | norm  |        |        |  |      |  |      |  |
|           |  | e-old |        |        |  |      |  |      |  |

|           |  |
|-----------|--|
| scale:    | 2:1  |
| material: | SEE NOTES  |
| title:    | <b>D-SUB COMBINATION FEMALE</b><br>CRIMP STYLE 17W2S<br>with threaded insert |
| dwg no:   | AutoCAD 2000 [DIN-A<br>13K1A252A<br>3<br>sh:1/1                              |
| part no:  | <b>3017W2SXK99A30X</b>   |

