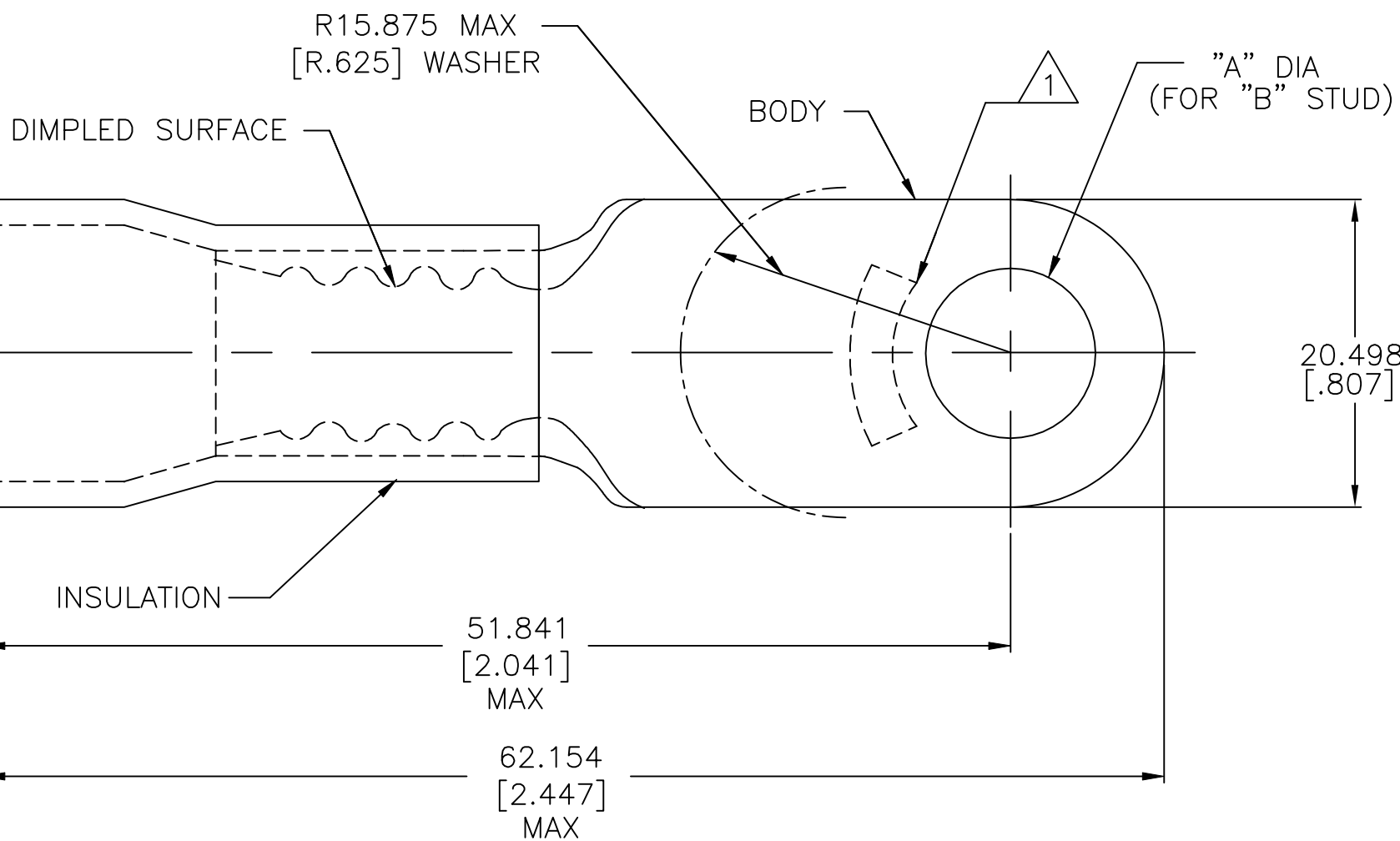


P	LTR	DESCRIPTION	DATE	DWN	APVD
	H1	REVISED PER ECO-11-002228	11FEB11	HMR	DR
	H2	REVISED PER ECO-17-014338	20APR2018	RS	DR



<b>AMP</b> WIRE RANGE	FILE E13288	LR7189 Certified
1/0 AWG STRANDED	1/0 AWG STRANDED	1/0 AWG STRANDED

- 1 STAMP AMP 1/0 W\* LOCATE APPROX AS SHOWN
- 2 BODY MATERIAL THK 1.778±0.051[.070±.002]
- 3 SEE TABLE FOR WIRE INSULATION DIA MAX
- 4 NOTE DELETED

16.891 [.665]	3/8	9.906±0.127 [.390±.005]		52045-5
17.374 [.684]	M8[5/16]	8.331±0.127 [.328±.005]	50	52045-1
WIRE INSULATION DIA MAX	"B"	"A"	QTY	PACKAGE TYPE
				PART NO

AMP INCORPORATED  
CUSTOMER SERVICE SYSTEMS

MAX RECOMMENDED OPERATING TEMPERATURE:  
105°C [221°F]

FOR ADDITIONAL PRODUCT INFORMATION OR COPIES OF DRAWINGS AND TECHNICAL DOCUMENTS

PRODUCT INFORMATION CENTER  
1-800-522-6752

VOLTAGE RATING:  
600 V MAX

FOR APPLICATION TOOLING INFORMATION

TOOLING ASSISTANCE CENTER  
1-800-722-1111

CIRCULAR MIL AREA:  
42.41-60.55mm<sup>2</sup>[83,700-119,500] STRANDED

FOR ORDER ENTRY

1-800-526-5142

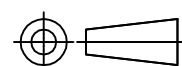
THIS DRAWING IS A CONTROLLED DOCUMENT FOR AMP INCORPORATED. IT IS SUBJECT TO CHANGE AND THE CONTROLLING ENGINEERING ORGANIZATION SHOULD BE CONTACTED FOR THE LATEST REVISION.

MATERIAL BODY: COPPER PER ASTM B-152 INSULATION: PVC

FINISH BODY: TIN PLATE PER ASTM-B545 INSULATION: COLOR BLUE

THIS DRAWING IS A CONTROLLED DOCUMENT.

DIMENSIONS:  
mm [INCHES]



TOLERANCES UNLESS OTHERWISE SPECIFIED:  
0 PLC ± -  
1 PLC ± -  
2 PLC ± -  
3 PLC ± 0.127[.005]  
4 PLC ± -  
ANGLES ± -

DWN	S.S. GOULDEN	9-28-93
CHK	R. HERSEY	9-28-93
APVD	B. BARE	9-28-93
PRODUCT SPEC	UL486 A-B	
APPLICATION SPEC	114-2161	
WEIGHT	-	

TE Connectivity Ltd.		
NAME TERMINAL, RING TONGUE, PLASTI-GRIP, WIRE SIZE: 1/0 AWG		
SIZE	CAGE CODE	DRAWING NO
A3	00779	C=52045
RESTRICTED TO		-

CUSTOMER DRAWING	SCALE 4:1	SHEET 1 OF 1	REV H2
------------------	-----------	--------------	--------