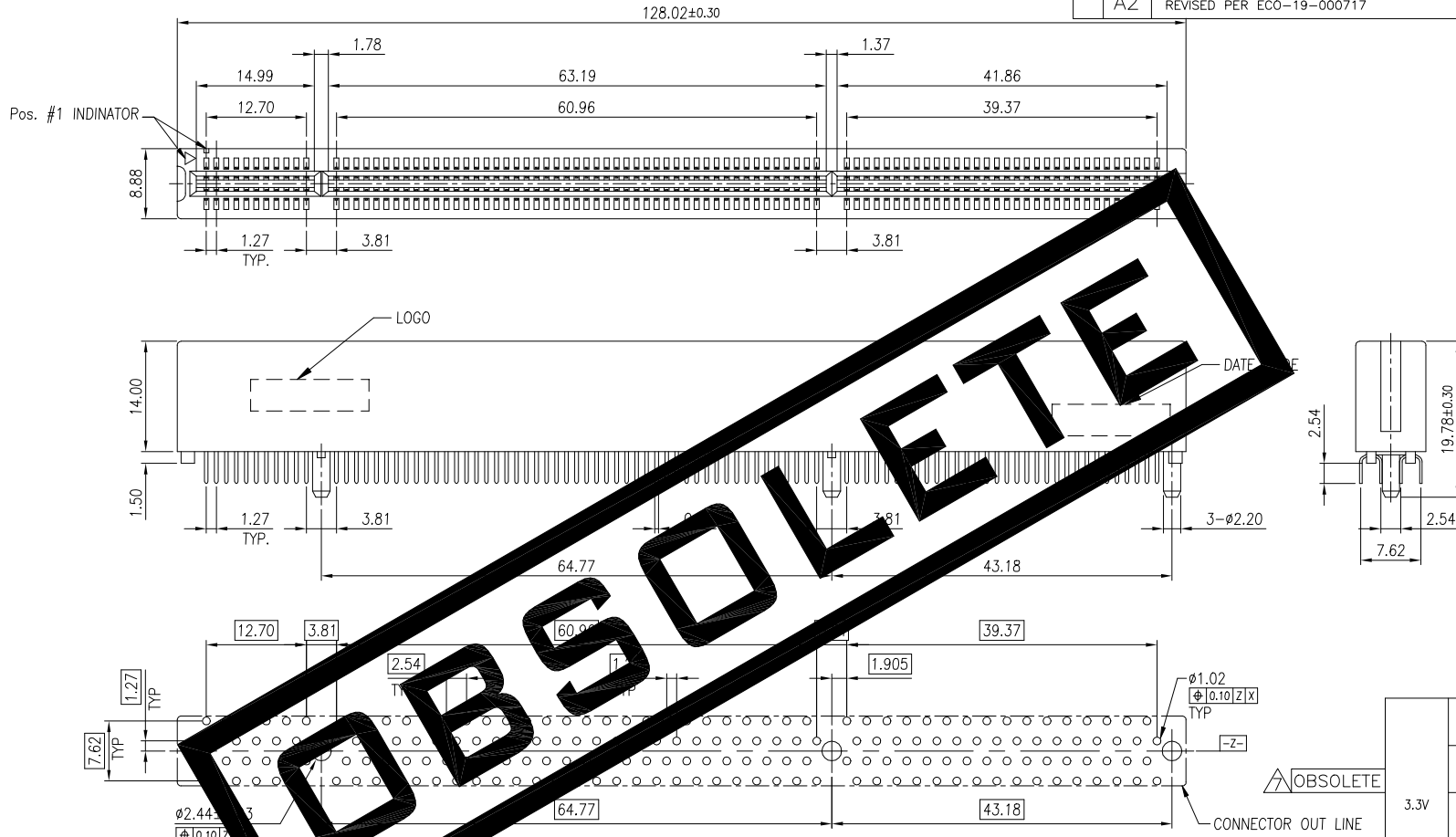


THIS DRAWING IS UNPUBLISHED. RELEASED FOR PUBLICATION  
 © COPYRIGHT BY TYCO ELECTRONICS CORPORATION. ALL RIGHTS RESERVED.

LOC DW  
 DIST —

| REVISIONS |     |                                    |         |     |      |
|-----------|-----|------------------------------------|---------|-----|------|
| P         | LTR | DESCRIPTION                        | DATE    | DWN | APVD |
| A         |     | REDRAW AND REVISED (ECR-09-001487) | 11JAN09 | SC  | WK   |
| A1        |     | REVISED PER ECO-09-024927          | 21JAN10 | KK  | HMR  |
| A2        |     | REVISED PER ECO-19-000717          | 16JAN19 | AL  | HL   |



OBSOLETE

RECOMMENDED PCB LAYOUT (TOP VIEW)  
 TOLERANCE : ±0.05

- NOTES:
- MATERIAL:  
 HOUSING: PA46 ,UL 94V-0, COLOR: SEE TABLE.  
 CONTACTS: PHOSPHOR BRONZE.
  - FINISH:  
 CONTACTS:  
 SELECTIVE GOLD (SEE TABLE) PLATED ON CONTACT AREA,  
 2.54um [100u"] MIN. MATTE-TIN PLATING ON SOLDER TAIL,  
 1.27um [50u"] MIN. NICKEL UNDERPLATED OVERALL.
  - WAVE SOLDER CAPABLE TO 265°C PER TE TEST SPEC.  
 109-202, CONDITION B.

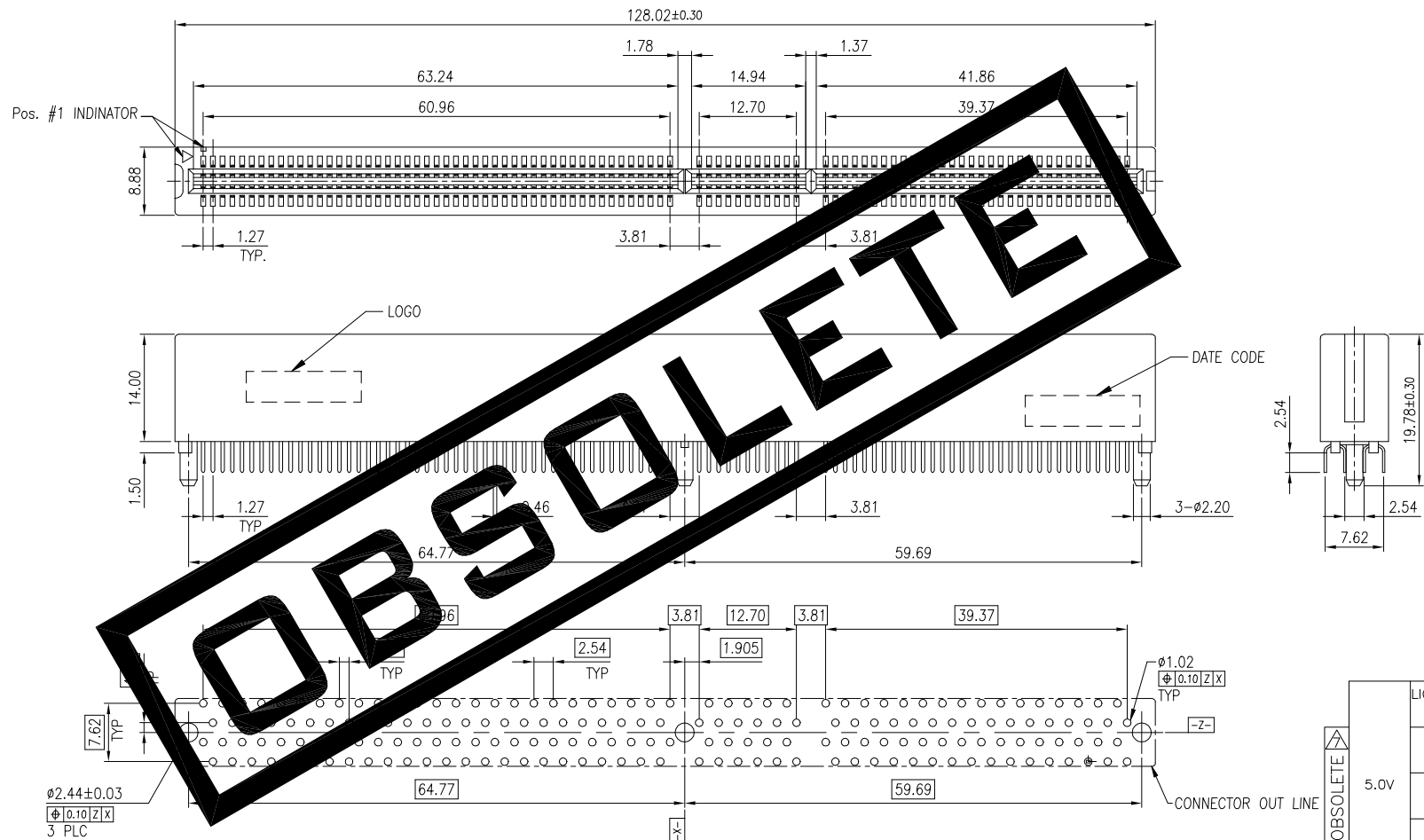
△ OBSOLETE PARTS: OBSOLETE CIS STREAMLINING PER D.RENAUD/D.SINISI

| VOLTAGE | HOUSING COLOR      | GOLD PLATING | PART NUMBER |
|---------|--------------------|--------------|-------------|
| 3.3V    | LIGHT GREEN (365C) | 15u"         | 6-1734377-2 |
|         |                    | G/F          | 6-1734377-1 |
|         | ORANGE (1575C)     | 15u"         | 4-1734377-2 |
|         |                    | G/F          | 4-1734377-1 |
|         | GREEN (347C)       | 15u"         | 2-1734377-2 |
|         |                    | G/F          | 2-1734377-1 |
| WHITE   | 30u"               |              | 1734377-3   |
|         | 15u"               |              | 1734377-2   |
|         | G/F                |              | 1734377-1   |

|  |  |                                     |  |  |
|--|--|-------------------------------------|--|--|
| THIS DRAWING IS A CONTROLLED DOCUMENT. |  | DWN S. CHIEN 12JAN2009              | Tyco Electronics Corporation<br>Taipei, Taiwan |  |
| DIMENSIONS: MM                         |  | CHK S. CHIEN 12JAN2009              | NAME   |  |
| TOLERANCES UNLESS OTHERWISE SPECIFIED: |  | APVD W. KODAMA 12JAN2009            | PCI, CARD EDGE 184P, VERTICAL, DIP TYPE        |  |
| 0 PLC ± -                              |  | PRODUCT SPEC 108-57384              | SIZE CAGE CODE DRAWING NO RESTRICTED TO        |  |
| 1 PLC ± 0.30                           |  | QUALIFICATION TEST REPORT 501-57440 | A3 00779 C=1734377                             |  |
| 2 PLC ± 0.20                           |  | WEIGHT                              | SCALE SHEET 1 OF 4 REV A2                      |  |
| 3 PLC ± -                              |  | CUSTOMER DRAWING                    |  |  |
| 4 PLC ANGLES ± -                       |  |                                     |  |  |
| MATERIAL SEE NOTE                      |  |                                     |  |  |
| FINISH SEE NOTE                        |  |                                     |  |  |

THIS DRAWING IS UNPUBLISHED. RELEASED FOR PUBLICATION  
COPYRIGHT BY TYCO ELECTRONICS CORPORATION. ALL RIGHTS RESERVED.

|     |      |             |     |             |      |     |      |
|-----|------|-------------|-----|-------------|------|-----|------|
| LOC | DIST | REVISIONS   |     |             |      |     |      |
| DW  | -    | P           | LTR | DESCRIPTION | DATE | DWN | APVD |
|     |      | SEE SHEET 1 |     |             |      |     |      |



|         |                    |              |             |
|---------|--------------------|--------------|-------------|
| 5.0V    | LIGHT GREEN (365C) | 15u"         | 7-1734377-2 |
|         | ORANGE (1575C)     | 15u"         | 5-1734377-2 |
|         | GREEN (347C)       | 15u"         | 3-1734377-2 |
|         | WHITE              | 15u"         | 1-1734377-2 |
| VOLTAGE | HOUSING COLOR      | GOLD PLATING | PART NUMBER |
|         |                    |              |             |

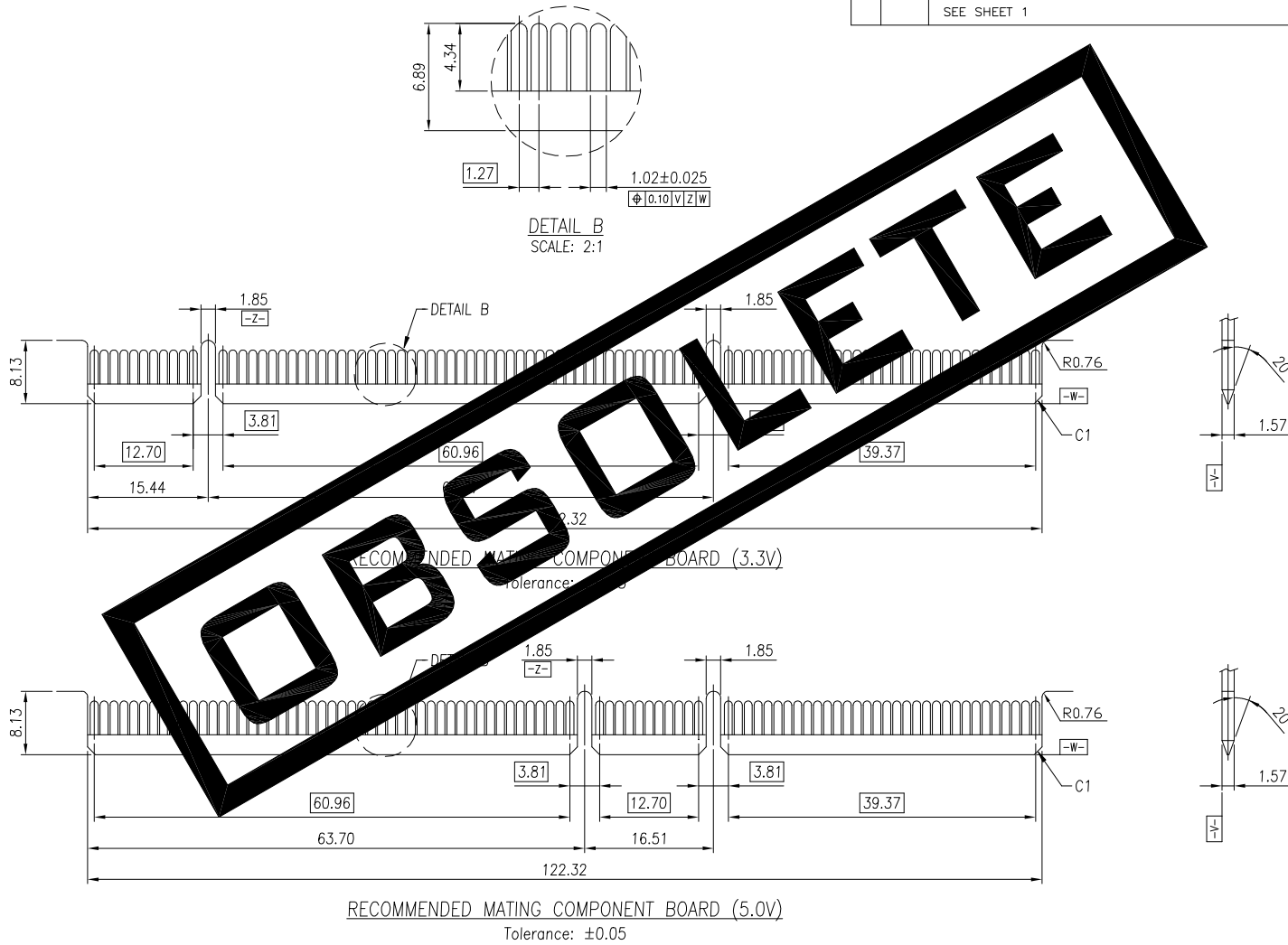
RECOMMENDED PCB LAYOUT (TOP VIEW)  
TOLERANCE : ±0.05

- NOTES:
- MATERIAL:  
HOUSING: PA46 ,UL 94V-0, COLOR: SEE TABLE.  
CONTACTS: PHOSPHOR BRONZE.
  - FINISH:  
CONTACTS:  
SELECTIVE GOLD (SEE TABLE) PLATED ON CONTACT AREA,  
2.54um [100u"] MIN. MATTE-TIN PLATING ON SOLDER TAIL,  
1.27um [50u"] MIN. NICKEL UNDERPLATED OVERALL.
  - WAVE SOLDER CAPABLE TO 265°C PER TE TEST SPEC.  
109-202, CONDITION B.

|  |  |                           |  |  |  |
|--|--|---------------------------|--|--|--|
| THIS DRAWING IS A CONTROLLED DOCUMENT. |  | DWN                       |  | Tyco Electronics Corporation<br>Taipei, Taiwan |  |
| DIMENSIONS: MM                         |  | CHK                       |  | NAME   |  |
| TOLERANCES UNLESS OTHERWISE SPECIFIED: |  | APVD                      |  | PCI, CARD EDGE 184P, VERTICAL, DIP TYPE        |  |
| 0 PLC ± -                              |  | PRODUCT SPEC              |  | SIZE   |  |
| 1 PLC ± 0.30                           |  | QUALIFICATION TEST REPORT |  | CAGE CODE                                      |  |
| 2 PLC ± 0.20                           |  | WEIGHT                    |  | DRAWING NO                                     |  |
| 3 PLC ± -                              |  | CUSTOMER DRAWING          |  | RESTRICTED TO                                  |  |
| 4 PLC ± -                              |  |                           |  | A3 00779 C=1734377                             |  |
| ANGLES ± -                             |  |                           |  | SCALE  |  |
| MATERIAL SEE NOTE                      |  |                           |  | SHEET  |  |
|  |  |                           |  | 2 OF 4   |  |
|  |  |                           |  | REV  |  |
|  |  |                           |  | A2   |  |

THIS DRAWING IS UNPUBLISHED. RELEASED FOR PUBLICATION  
 © COPYRIGHT BY TYCO ELECTRONICS CORPORATION. ALL RIGHTS RESERVED.

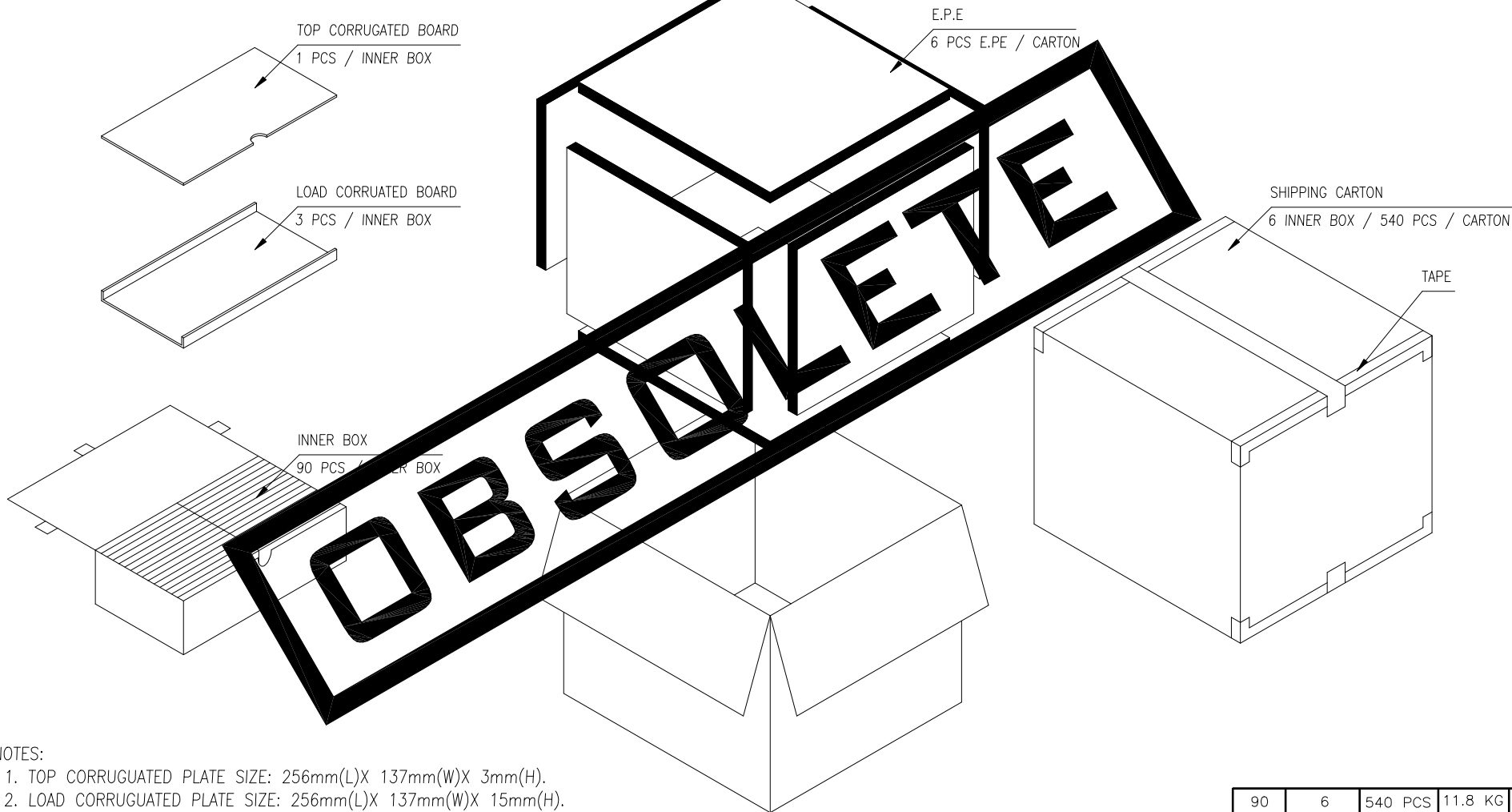
|     |      |             |     |             |      |     |      |
|-----|------|-------------|-----|-------------|------|-----|------|
| LOC | DIST | REVISIONS   |     |             |      |     |      |
| DW  | —    | P           | LTR | DESCRIPTION | DATE | DWN | APVD |
|     |      | SEE SHEET 1 |     |             |      |     |      |



|  |  |                           |  |  |  |
|--|--|---------------------------|--|--|--|
| THIS DRAWING IS A CONTROLLED DOCUMENT. |  | DWN                       |  | Tyco Electronics Corporation<br>Taipei, Taiwan |  |
| DIMENSIONS: MM                         |  | CHK                       |  | NAME   |  |
| TOLERANCES UNLESS OTHERWISE SPECIFIED: |  | APVD                      |  | PCI, CARD EDGE 184P, VERTICAL, DIP TYPE        |  |
| 0 PLC ± -                              |  | PRODUCT SPEC              |  | SIZE   |  |
| 1 PLC ± -                              |  | QUALIFICATION TEST REPORT |  | CAGE CODE                                      |  |
| 2 PLC ± -                              |  | WEIGHT                    |  | DRAWING NO                                     |  |
| 3 PLC ± -                              |  | CUSTOMER DRAWING          |  | C=1734377                                      |  |
| 4 PLC ± -                              |  | SCALE                     |  | SHEET  |  |
| ANGLES ± -                             |  | —                         |  | 3 OF 4   |  |
| MATERIAL                               |  | FINISH                    |  | REV  |  |
|  |  |                           |  | A2   |  |

THIS DRAWING IS UNPUBLISHED. RELEASED FOR PUBLICATION  
 © COPYRIGHT BY TYCO ELECTRONICS CORPORATION. ALL RIGHTS RESERVED.

| LOC | DIST | REVISIONS   |      |     |      |
|-----|------|-------------|------|-----|------|
| P   | LTR  | DESCRIPTION | DATE | DWN | APVD |
| DW  | —    |             |      |     |      |



NOTES:

1. TOP CORRUGATED PLATE SIZE: 256mm(L)X 137mm(W)X 3mm(H).
2. LOAD CORRUGATED PLATE SIZE: 256mm(L)X 137mm(W)X 15mm(H).
3. INNER BOX SIZE: 272mm(L)X 147mm(W)X 78mm(H).
4. CARTON SIZE: 345mm(L)X 320mm(W)X 285mm(H).
5. NET WEIGHT: 10.0 Kg.
6. GROSS WEIGHT: 11.8 Kg.

|           |              |          |              |            |
|-----------|--------------|----------|--------------|------------|
| 90        | 6            | 540 PCS  | 11.8 KG      | 10.0 KG    |
| PCS / BOX | BOX / CARTON | QUANTITY | GROSS WEIGHT | NET WEIGHT |

|  |  |                           |  |  |  |
|--|--|---------------------------|--|--|--|
| THIS DRAWING IS A CONTROLLED DOCUMENT. |  | DWN                       |  | Tyco Electronics Corporation<br>Taipei, Taiwan |  |
| DIMENSIONS: MM                         |  | CHK                       |  | NAME   |  |
| TOLERANCES UNLESS OTHERWISE SPECIFIED: |  | APVD                      |  | PCI, CARD EDGE 184P, VERTICAL, DIP TYPE        |  |
| 0 PLC ± -                              |  | PRODUCT SPEC              |  | SIZE CAGE CODE DRAWING NO                      |  |
| 1 PLC ± -                              |  | QUALIFICATION TEST REPORT |  | RESTRICTED TO                                  |  |
| 2 PLC ± -                              |  | WEIGHT                    |  | A3 00779 C=1734377                             |  |
| 3 PLC ± -                              |  | CUSTOMER DRAWING          |  | SCALE — SHEET 4 OF 4 REV A2                    |  |
| 4 PLC ± -                              |  |                           |  |  |  |
| ANGLES ± -                             |  |                           |  |  |  |
| MATERIAL                               |  | FINISH                    |  |  |  |