

CUSTOMER PRINT

PART NUMBER: W8382-XPG-P-3XX

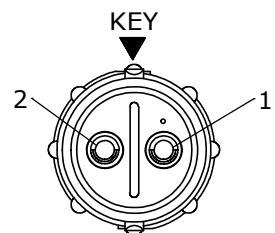
**NOTES:**

1. ALL PARTS ARE BULK PACKED
2. CONTACTS ASSEMBLED INTO CONNECTOR
3. ALL DIMENSIONS ARE REFERENCE EXCEPT THOSE WITH A TOLERANCE

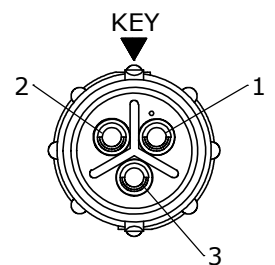
ASS'Y P/N	CABLE O.D.
W8382-XPG-P-3DC	DAISY CHAIN
W8382-XPG-P-311	.09-.14 [2.3-3.5]
W8382-XPG-P-315	.15-.17 [3.8-4.3]
W8382-XPG-P-318	.18-.20 [4.6-5.1]
W8382-XPG-P-321	.21-.23 [5.3-5.8]

ASS'Y P/N	NO. OF CONTACTS
W8382-2PG-P-3XX	(2) #16
W8382-3PG-P-3XX	(3) #16
W8382-4PG-P-3XX	(4) #16
W8382-5PG-P-3XX	(5) #16
W8382-XPG-P-3XX	

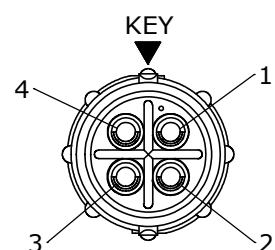
GROMMET SIZE  
NUMBER OF CONTACTS



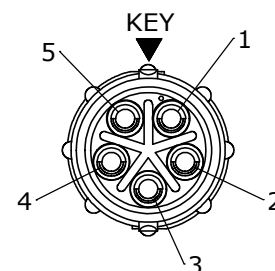
**WIRE VIEW**  
W8382-2PG-P-3XX



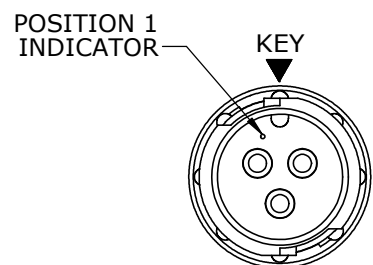
**WIRE VIEW**  
W8382-3PG-P-3XX



**WIRE VIEW**  
W8382-4PG-P-3XX

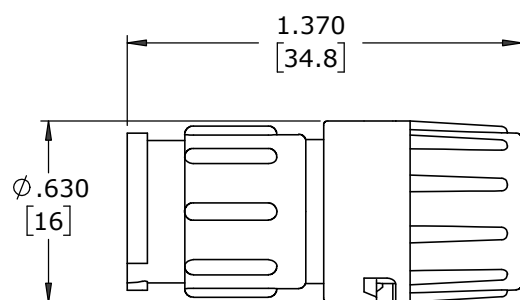


**WIRE VIEW**  
W8382-5PG-P-3XX

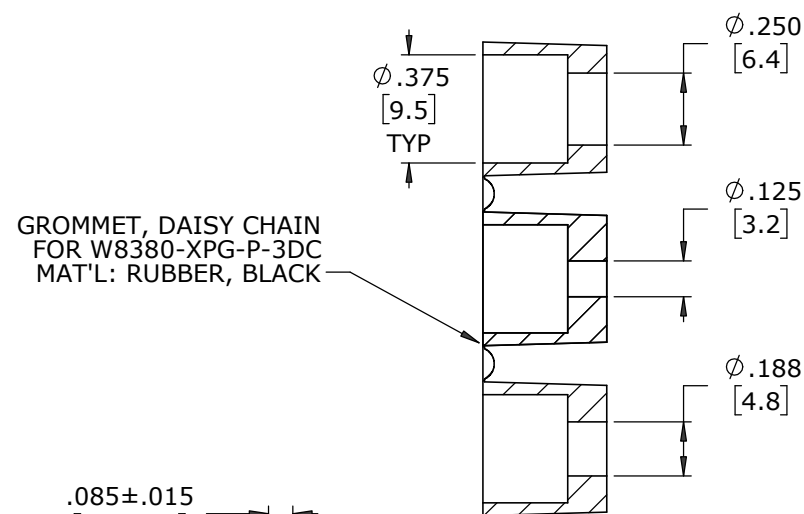


**FACE VIEW**  
W8382-3PG-P-3XX

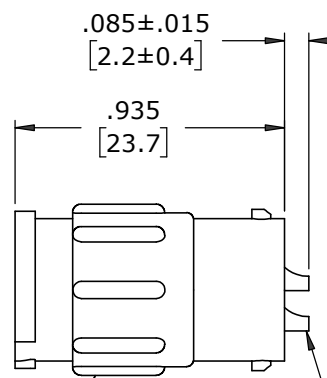
IN-LINE CONNECTOR, MALE  
MAT'L: UV PBT, BLACK



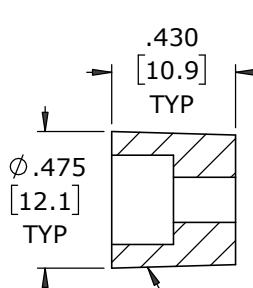
**ASSEMBLED VIEW**  
FOR CUSTOMER REFERENCE



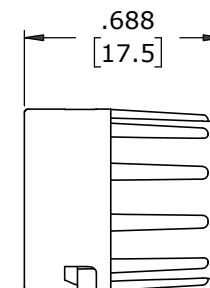
GROMMET, DAISY CHAIN  
FOR W8380-XPG-P-3DC  
MAT'L: RUBBER, BLACK



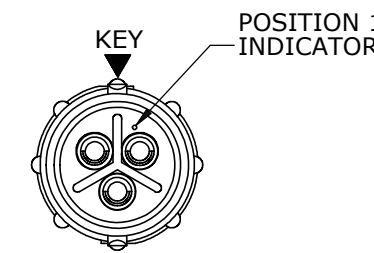
(2-5) #16 PIN CONTACTS, SOLDER  
MAT'L: GOLD PLATED COPPER ALLOY



GROMMET  
MAT'L: SANTOPRENE, BLACK



BACKSHELL  
MAT'L: UV PBT, BLACK



**WIRE VIEW**  
W8382-3PG-P-3XX

**CUSTOMER APPROVAL**

THIS DOCUMENT CONTAINS CONFIDENTIAL INFORMATION PROPRIETARY TO CONXALL CORPORATION. ANY REPRODUCTION, DISCLOSURE, OR USE OF THIS DOCUMENT /INFORMATION IS EXPRESSLY PROHIBITED UNLESS AUTHORIZED IN WRITING BY CONXALL CORPORATION.

APPROVED BY: \_\_\_\_\_  
DATE: \_\_\_\_\_

A	MA	07-13-20	DRAWING CREATED PER PDR 16014-10
REV.	INIT.	DATE	DESCRIPTION
	MA	07-13-20	ORIG. DRAWN BY: DATE: MA 07-13-20
ALL INFORMATION ILLUSTRATED IS THE PROPERTY OF "CONXALL CORPORATION". UNAUTHORIZED DUPLICATION OR DISTRIBUTION OF THIS DOCUMENT IS PROHIBITED.			<p>601 E. WILDWOOD VILLA PARK, IL 60181</p>
ALL UNITS ARE IN FEET, INCHES, FRACTIONS OF INCHES AND DECIMALS.			
SCALE	SIZE	SHEET	TITLE:
NTS	B	1 OF 1	IN-LINE CONNECTOR ASSEMBLY (2-5) #16 PIN CONTACTS, SOLDER INSTA-CLICK™ MINI-CON-X STANDARD PRODUCT
FILE:	DIRECTORY:	PART NUMBER:	CUSTOMER:
W8382-XPG-P-3XX	SLW	W8382-XPG-P-3XX	
- CRITICAL CHARACTERISTIC FLAG PER SPEC. XXXX			REV A

DIMENSIONS IN BRACKETS [ ] ARE IN MILLIMETERS UNLESS INDICATED

**RoHS COMPLIANT**