

DWG. NO.	032-7427		
REVISIONS			
SYM.	E.C.N.	DATE	APVD.
A	23519	9/25/97	
REVISED & UPDATE			
B	24367	9/20/00	
ADDED TERM. LUG #1			

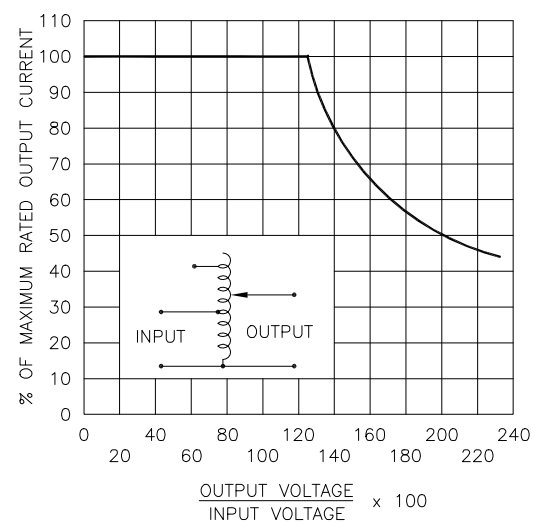
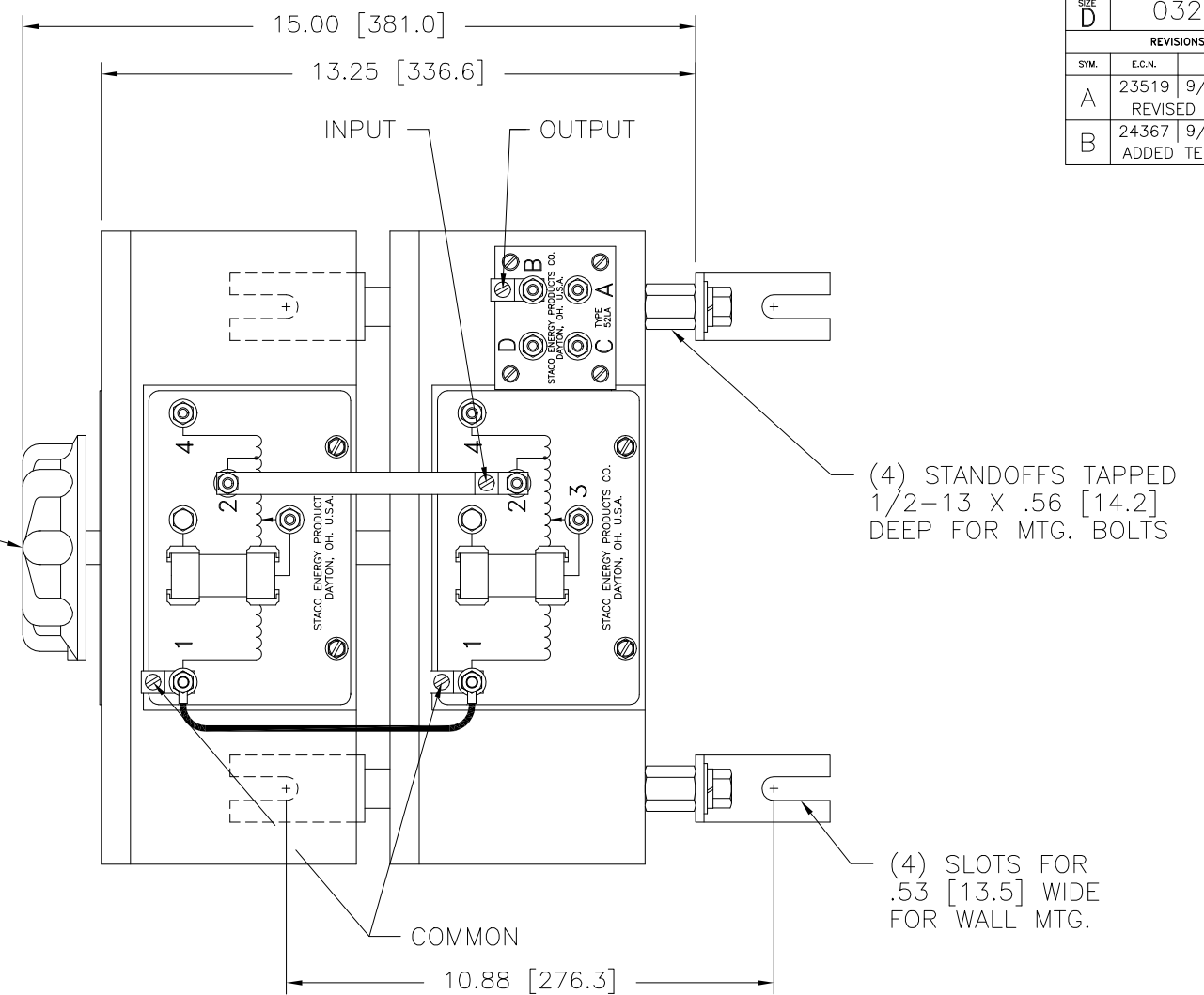
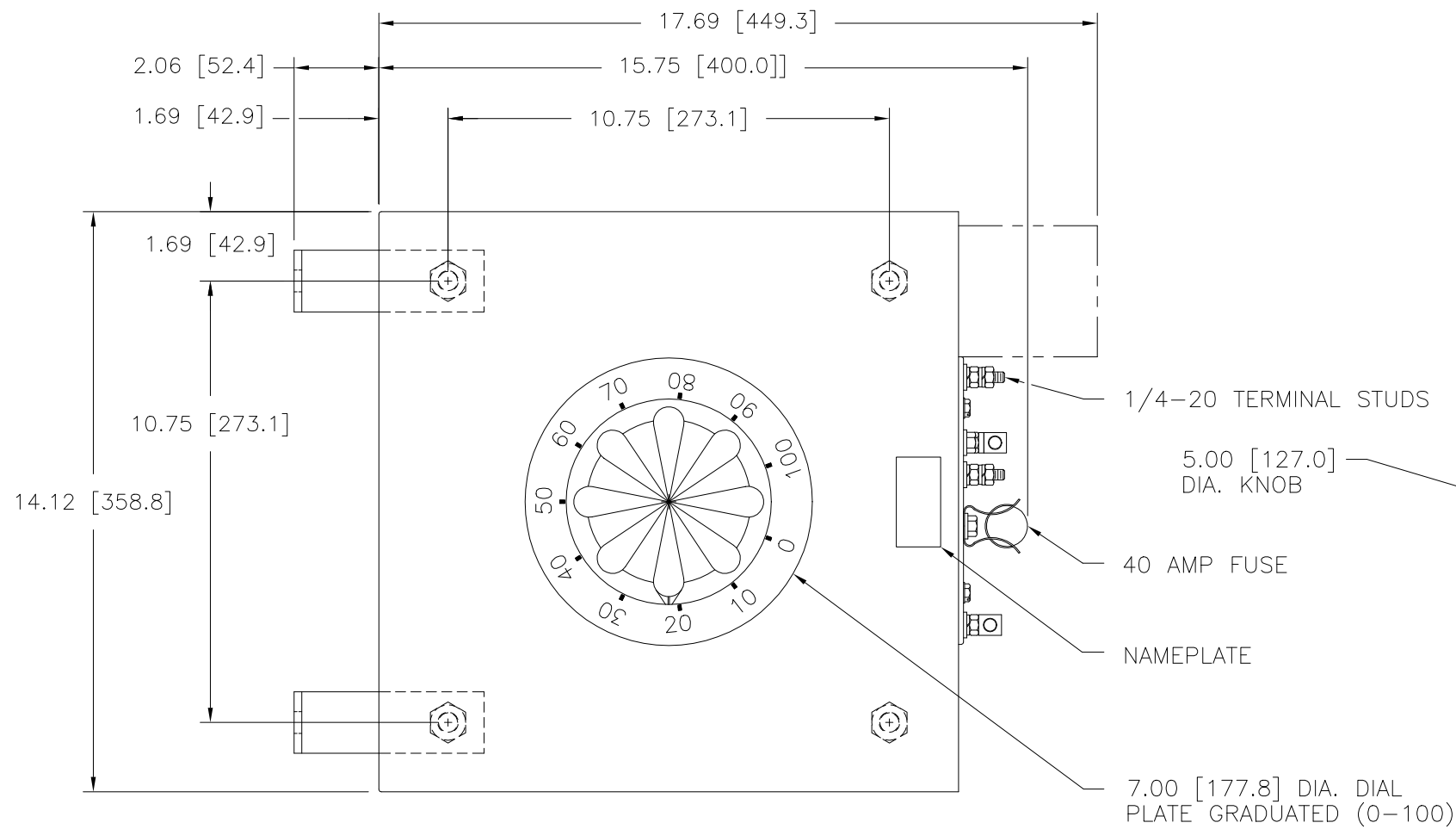
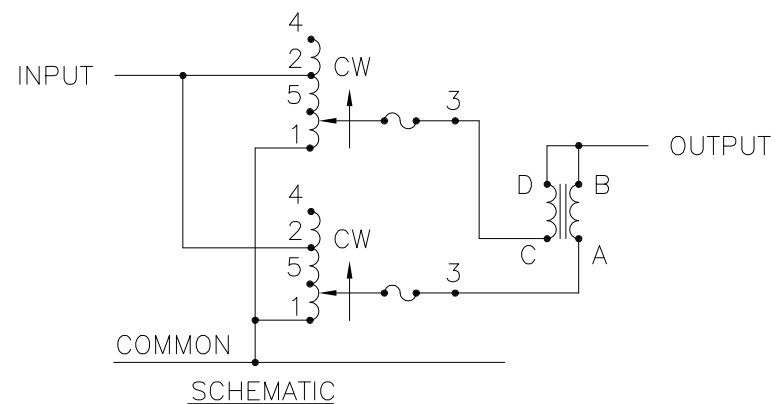


FIGURE A
MAXIMUM OUTPUT CURRENT OF ANY DUAL INPUT VOLTAGE OR VOLTAGE DOUBLER UNIT OPERATED AT LOWER INPUT VOLTAGE.



* MAXIMUM OUTPUT CURRENT IN OUTPUT VOLTAGE RANGE FROM 0 TO 25% ABOVE LINE VOLTAGE. AT HIGHER OUTPUT VOLTAGES, OUTPUT CURRENT MUST BE REDUCED ACCORDING TO RATING CURVE FIGURE A.

++ MAXIMUM KVA AT MAXIMUM OUTPUT AND CORRESPONDING DE-RATED CURRENT. MAXIMUM KVA AT LOWER OUTPUT VOLTAGES MAY BE CALCULATED

V.D. = VOLTAGE DOUBLER.

WIRING	INPUT		OUTPUT			SHAFT ROTATION FOR VOLTAGE INCREASE	TERMINAL CONNECTIONS FOR INCREASING VOLTAGE AS VIEWED FROM TOP	
	VOLTS	HERTZ	VOLTS	CONSTANT CURRENT LOAD			INPUT	OUTPUT
				MAX. AMPS	MAX. KVA			
SINGLE PHASE PARALLEL	240	50/60	0-240	70	16.8	CW	1-4	1-B
			0-280	70	19.6		1-2	1-B
	120	50/60	0-280	70* -30 V.D.	8.4 ++	CW	1-5	1-B

UNLESS OTHERWISE SPECIFIED, TOLERANCE IS # DECIMALS .XX .004-.012 .002 .005				UNITS IN [mm]		TITLE: SPEC. CONTROL DRAWING VARIABLE TRANSFORMER TYPE: 6020C-2P		STACO ENERGY PRODUCTS CO. A COMPONENTS CORPORATION OF AMERICA COMPANY DAYTON, OHIO U.S.A.	
MATERIAL:		ALL DIMENSIONS APPLY AFTER PLATING		DRAWN BY: TIM RAU		DATE: 9/25/97		FIRST USED ON: DO NOT SCALE DWG.	
The information and design disclosed herein was originated by and is the property of STACO ENERGY PRODUCTS CO., which reserves all patent, proprietary, design, manufacturing, reproduction, use and sale rights thereto, and to any article disclosed therein except to the extent rights are expressly granted to others. The foregoing does not apply to vendor proprietary parts.				CHECKER:		DATE:		CUSTOMER APPROVAL: DATE:	
				ENGINEER:		DATE:		SCALE: .5=1	
				WEIGHT APPROX. 148 LBS.		CODE IDENT. NO. 83008		DWG. NO. 032-7427	
				SHEET 1 OF 1		D			