

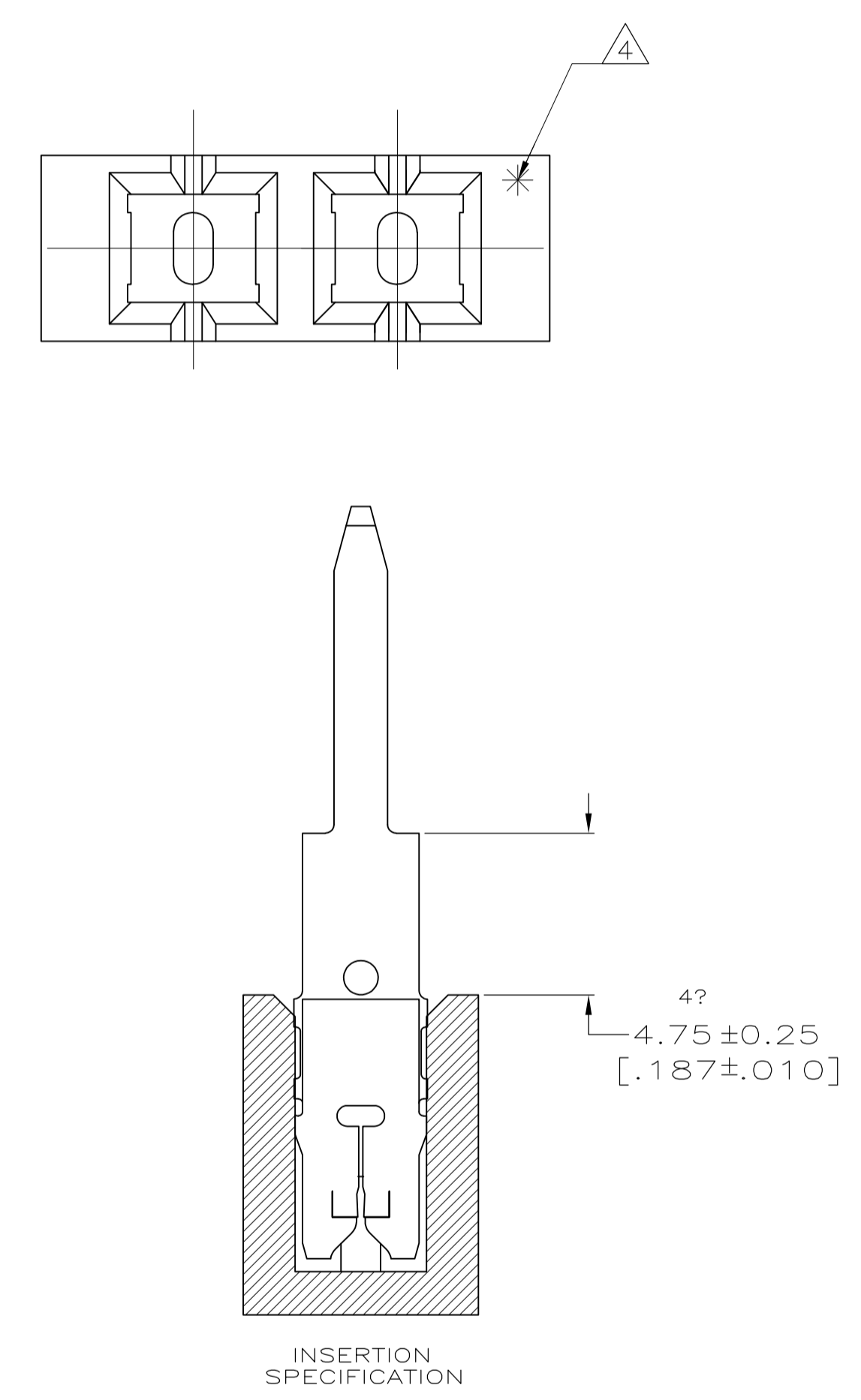
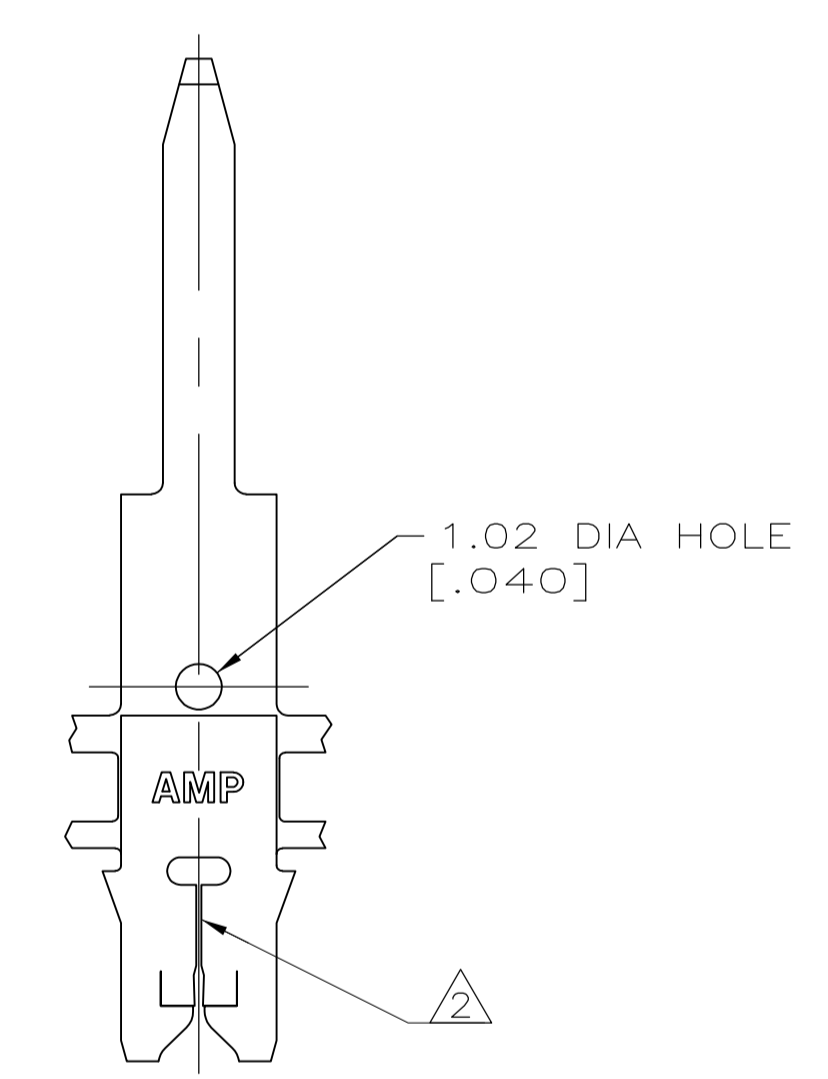
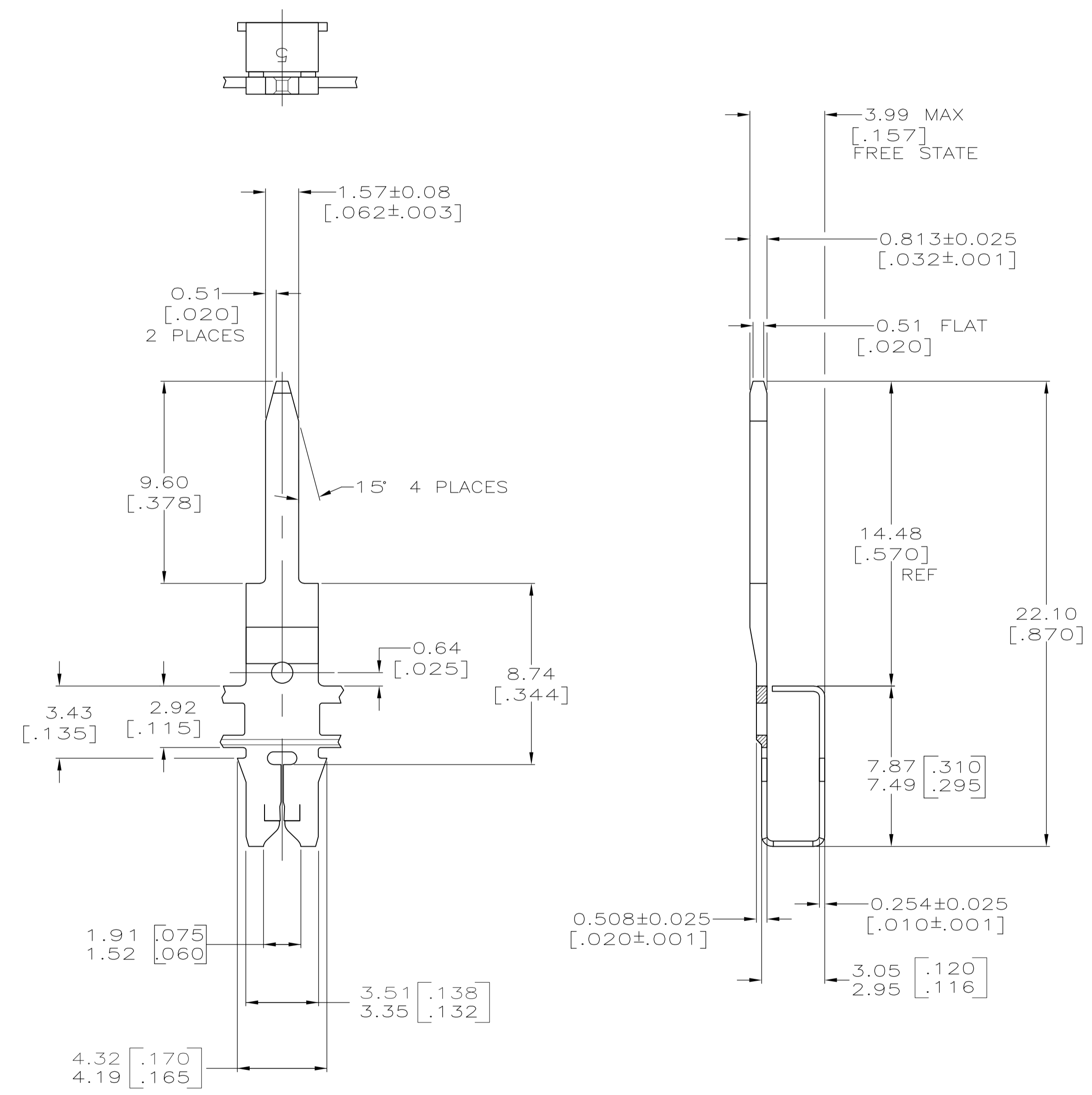



- 1 CONTINUOUS STRIP ON REELS WITH TERMINALS LOCATED ON 6.00±0.08 [.236±.003] CENTERS.
- 2  SLOT TERMINATES EITHER A SINGLE OR DOUBLE MAGNET WIRE OF THE SAME TYPE AND SIZE, COPPER 0.23mm [#31] AWG.
- 3 AFTER INSERTION INTO PLASTIC HOLDER, TAB PORTION MUST BE BENT OVER 45° TO 90° OR POTTED-IN TO PREVENT PULL-OUT WHEN MATING RECEPTACLE IS DISCONNECTED.
- 4  POINT OF MEASUREMENT LOCATED APPROXIMATELY AS SHOWN



63810-1
PART NO.

THIS DRAWING IS A CONTROLLED DOCUMENT.		DIN R. GRZYBOWSKI 2/JAN/95	 TE Connectivity	
DIMENSIONS: INCHES		CHK M.S. FEHER 2/JAN/95		
TOLERANCES UNLESS OTHERWISE SPECIFIED:		APVD N.E. NEFF 2/JAN/95	NAME TAB, 1.57[.062], 300 SRS MAG-MATE	
0 PLC ± - 1 PLC ± - 2 PLC ± 0.15[.006] 3 PLC ± - 4 PLC ± - ANGLES ± -		PRODUCT SPEC 108-2012	RESTRICTED TO	
MATERIAL BRASS		APPLICATION SPEC 114-2046	SIZE A1	CAGE CODE 00779
FINISH TIN PLATED		WEIGHT -	DRAWING NO 63810	REV E1
CUSTOMER DRAWING		SCALE 6:1	SHEET 1 OF 1	