

ATLANTIC VERSION TERMINATOR INTERFACE ADAPTER	PART NUMBER	REVISION	DESCRIPTION	FEED TYPE	APPLICATOR STYLE CONVERSION CHART						
					CONVERT TO	PART NUMBERS REQUIRED					
	2266131-1	A	FINE CRIMP HEIGHT ADJUST	MECHANICAL	PNEUMATIC FEED	2119950-1	1338685-1	5-18022-5	2119641-1	2119799-1	2063440-1
					SERVO LATCH PLATE	2119951-1	-	8-2266131-5	1901094-3	1-1752354-7	2168400-6 (QUANTITY 2)
					SMART APPLICATOR	2161326-1	-	8-2266131-4	-	-	-
	2266131-2	A	FINE CRIMP HEIGHT ADJUST	PNEUMATIC	MECHANICAL FEED	2119949-1	1338685-1	5-18022-5	2119653-1	-	-
					SERVO LATCH PLATE	2119951-1	-	8-2266131-5	1901094-3	1-1752354-7	2168400-6 (QUANTITY 2)
					SMART APPLICATOR	2161326-1	-	8-2266131-4	-	-	-
	2266131-5	A	FINE CRIMP HEIGHT ADJUST	SERVO LATCH PLATE	MECHANICAL FEED	2119949-1	1338685-1	5-18022-5	2119653-1	-	-
PNEUMATIC FEED					2119950-1	1338685-1	5-18022-5	2119641-1	2119799-1	2063440-1	
2266131-6	A	NON-CRIMP HEIGHT ADJUST	SERVO LATCH PLATE	-	-	-	-	-	-	-	
				-	-	-	-	-	-	-	
2266131-7	A	FINE CRIMP HEIGHT ADJUST	NONE	-	-	-	-	-	-	-	
7-2266131-7	A	CRIMP TOOLING KIT	-	-	-	-	-	-	-	-	

APPLICATOR DATA		
CRIMP	SIZE	TYPE
WIRE	3.20 mm [.126]	F
INSUL	4.10 mm [.161]	OV

APPLICATOR INSTRUCTIONS 408-10389

TERMINAL DATA: FCI TERMINAL	CI_CRIMP_SPEC_SRC_STR		
TERMINAL NAME: SICMA2 2.8 X 0.8 MALE			
WIRE STRIP LENGTH 4.40-4.42 mm [.173-.174 IN]	INSULATION DIAMETER RANGE Ø3.20-3.90 mm [.126-.154 IN]		
TERMINAL APPLICATION SPECIFICATION			
TERMINALS APPLIED			
TE TERMINAL	FCI TERMINAL	TE TERMINAL	FCI TERMINAL
1949190-1	SICMA2 2.8 X 0.8 MALE		

WIRE SIZE	CRIMP HEIGHT mm [INCH]	CRIMP HEIGHT REFERENCE SETTING
5.00mm2	2.65+/-0.05 [.104+/-0.002]	4.7
4.00mm2	2.34+/-0.05 [.092+/-0.002]	8.0
3.00mm2	2.10+/-0.05 [.083+/-0.002]	10.5

- RECOMMENDED SPARE PARTS
- GREASE BEARING SURFACES LIGHTLY
- 3. LUBRICATE DAILY PER THE APPLICATOR INSTRUCTION SHEET SUPPLIED WITH THE APPLICATOR.
- APPLICATOR SPECIFIC DATA TO BE ENTERED INTO BLANK MEMORY CHIP AT ASSEMBLY. SEE BELOW FOR PART NUMBER:  
MECHANICAL FEED WITH "SMART APPLICATOR" CONVERSION: 8-2266131-4  
PNEUMATIC FEED WITH "SMART APPLICATOR" CONVERSION: 8-2266131-4  
SERVO FEED WITH "FINE CRIMP HEIGHT ADJUST": 8-2266131-5  
SERVO FEED WITH "NON-CRIMP HEIGHT ADJUST": 8-2266131-6
- 5. ADJUSTMENT OF THE STRIPPER MAY BE REQUIRED WHEN MOVING THE APPLICATOR BETWEEN BENCH AND LEADMAKER APPLICATIONS.
- APPLY PART NUMBER 1-23419-5 LOCTITE TO THREADS OF ITEMS 62 & 242. FOR -6 ONLY APPLY PART NUMBER 1-23419-5 LOCTITE TO THREADS OF ITEMS 37, 242.
- GREASE THREADS, GROOVE AND O-RING ON ITEMS 35 & 252.
- MAGNET, ITEM 166 MUST BE ORIENTED CORRECTLY IN ORDER TO PROPERLY ACTUATE THE COUNTER.
- CRIMP HEIGHT REFERENCE SETTING WAS THE SETTING USED WHEN THE APPLICATOR WAS QUALIFIED AT THE FACTORY. ADJUSTMENT MAY BE NECESSARY WHEN RUNNING APPLICATOR IN THE FIELD.
- SPARE FEED CAM STORAGE LOCATION REFER TO INSTRUCTION SHEET FOR ADDITIONAL INFORMATION.
- TO CONVERT THE APPLICATOR TO A NON-CARRIER CUTTING STYLE, REMOVE ITEM 13 AND ATTACH TO THE LOCATION ON THE BACK SIDE OF THE HOUSING. REFER TO INSTRUCTION SHEET FOR ADDITIONAL INFORMATION.
- WHEN ASSEMBLING A NON CRIMP HEIGHT ADJUST APPLICATOR (-6) USE SHIMS FROM ITEM 260 TO ACHIEVE A NOMINAL SHIM HEIGHT OF 3.15.

**\*WARNING**  
ON INSTALLATION, SET WIRE DISC, ITEM 40 TO LARGEST WIRE SIZE SETTING. USE OF SETTINGS BELOW MINIMUM REQUIRED CRIMP HEIGHT SETTING WILL CAUSE DAMAGE TO CRIMP TOOLING.

-77	-7	-6	-5	-2	-1	PART NO	DESCRIPTION	ITEM NO
-	-	1	-	-	-	2119957-2	TEC Standard Metric Part Template	260
-	1	-	1	1	1	8-21084-0	O-RING, .676 ID, .070 DIA. MAT.	252
-	-	-	-	1	-	2119640-1	PUSH ROD, AIR FEED	250
-	-	-	-	1	-	2079988-1	BUSHING, LCH5-12, MISUMI	249
-	-	-	-	1	-	2119641-1	FEED CAM, AIR FEED	248
-	1	-	1	1	1	2119798-1	DETENT PIN	247

**ATLANTIC VERSION**  
Shown on sheets 1 of 4 & 2 of 4  
(Pacific version shown on sheets 3 of 4 & 4 of 4)

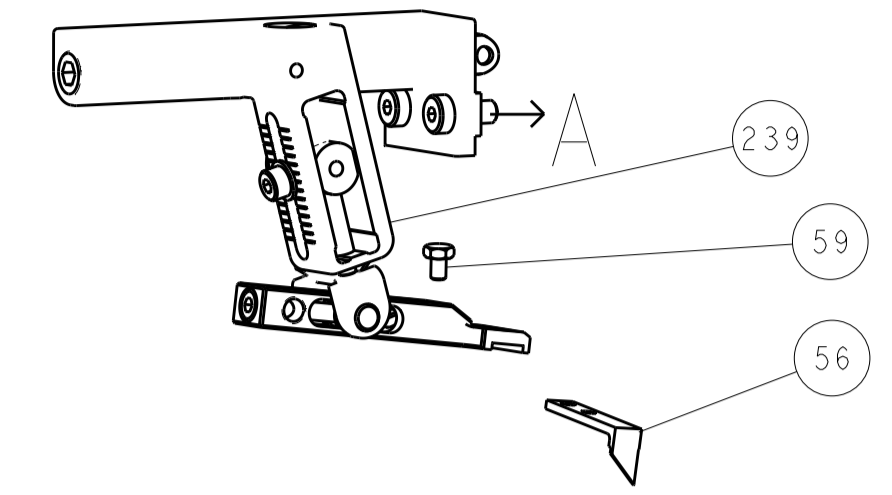
SET UP GAUGE 2119599-1	LOC A	DIST 66	REVISIONS					
			P	LTR	DESCRIPTION	DATE	OWN	APVD
	A				RELEASED	26DEC2013	KS	TE

P	LTR	DESCRIPTION	DATE	OWN	APVD			
-	1	-	1	1	1	1-22279-3	SPRING, COMPRESSION	246
-	-	1	-	-	-	2119758-1	RAM, AMP STYLE, SIDE FEED, NON-ADJ.	245
-	1	1	1	1	1	2119082-8	CAM, SNAIL, INSULATION ADJUSTMENT	244
-	1	1	1	1	1	2079764-1	WASHER, WAVE SPRING, CREST-TO-CREST	243
-	1	1	1	1	1	2119083-1	RETAINER, INSULATION DIAL	242
-	1	1	1	1	1	7-18023-7	SCR, SKT HD CAP M3 X 4.0	241
-	-	2	2	-	-	2168400-6	SHCS, LOW HEAD, RoHS, M5 X 16	240
-	-	-	-	-	1	2119580-1	MECHANICAL FEED ASSEMBLY	239
-	-	-	-	1	-	2063440-1	AIR FEED MODULE	238
-	-	1	1	-	-	2119740-2	TAG, IDENTIFICATION	213
-	-	1	1	-	-	1901094-3	SPACER, FEEDER	198
-	-	-	-	2	-	21045-3	RING, RETAIN, EXTERN, 3/16 CRESCENT	172
-	1	1	1	1	1	994969-1	MAGNET, RARE EARTH HIGH ENERGY	166
-	REF	REF	REF	REF	REF	994970-2	COUNTER, MAGNETIC	164
-	-	-	-	1	-	240638-1	SPRING, FEED FINGER	163
-	-	-	-	1	-	3-23627-7	PIN, RETAIN, GRVD, 3/16 X .854	137
-	-	-	-	1	-	2119799-1	HOLDER, FEED FINGER, AF	136
-	-	REF	REF	-	-	SEE NOTE 4	MEMORY CHIP, PROGRAMMED	135
-	-	1	1	-	-	1633743-1	SERVO FEED LATCH ASM	133
-	1	1	1	1	1	1-18028-2	WASHER, FLAT, REG M4	119
-	-	REF	REF	-	-	2119944-1	FEED FINGER ASSEMBLY, SF	117
-	1	1	1	1	1	455888-4	SPACER, CRIMPER	82
-	1	1	1	1	1	22878-8	SPRING, COMPRESSION	77
-	1	1	1	1	1	854769-4	HOLDER, INS	74
-	1	1	1	1	1	2119956-1	DOCUMENTATION PACKAGE	71
-	1	1	1	1	1	2119791-9	DEPRESSOR, WIRE	70
-	1	-	-	1	1	2119740-1	TAG, IDENTIFICATION	67
-	2	2	2	2	2	2168078-1	SCREW, DRIVE, RH, RoHS, 2 x .188	66
-	1	-	1	1	1	2119793-1	LIMITER, ADJUSTMENT BOLT	63
-	3	-	3	3	3	992763-5	SCR, SET, SOC, CONE POINT, M3 X 4.0	62
-	1	1	1	1	1	2079383-4	SCR, BHSC, RoHS (M4 X 8)	60
-	-	-	-	1	1	5-18022-5	SCR, HEX HD CAP, M4 X 6.0	59
-	1	1	1	1	1	21028-2	PIN, SLOTTED SPRING .062 X .250	58
-	-	-	-	1	1	1338685-1	PAWL, FEED	56
-	4	4	4	4	4	2168400-1	SHCS, LOW HEAD, RoHS, M4 X 12	54
-	2	2	2	2	2	2168083-3	SCR, SKT HD CAP, RoHS, M4 X 12.0	53
-	1	1	1	1	1	5018030-1	NUT, HEX, REG, RoHS, M3	52
-	1	1	1	1	1	811242-5	BUMPER, HOLD DOWN	51
-	1	1	1	1	1	690753-2	SPACER, TONKER	50
-	-	-	-	1	2	18023-9	SCR, SKT HD CAP M4 X 6.0	49
-	-	-	-	-	1	2119652-1	FEED CAM, PRE FEED	48
-	-	-	-	-	1	2119653-1	FEED CAM, POST FEED	47
-	1	1	1	1	1	2119656-9	APPLICATOR BASIC ASSEMBLY, SF	46
-	1	-	-	1	1	2119370-1	RAM, AMP STYLE, SIDE FEED	44
-	1	1	1	1	1	2079383-7	SCR, BHSC, RoHS (M8 X 25)	41
-	1	-	1	1	1	2119645-1	DISC, NUMBERED FA WIRE ADJUSTMENT	40
-	1	-	1	1	1	2119957-1	APPLICATOR SHIM PACK	39
-	1	1	1	1	1	2119644-3	RAM WASHER, PRECISION	38
-	1	1	1	1	1	2119085-1	FA HEAD, ATLANTIC STYLE	37
-	1	-	1	1	1	2119092-1	BOLT, ADJUSTMENT	35
-	1	1	1	1	1	1752356-1	SUPPORT, TERMINAL	34
-	2	2	2	2	2	2079383-5	SCR, BHSC, RoHS (M4 X 20)	33
-	1	1	1	1	1	2161328-1	HEX HEAD, FLANGED, M5 X 8mm LONG	32
-	1	1	1	1	1	1320908-7	SPACER, STRIP GUIDE	30
-	1	1	1	1	1	2119959-1	ASSEMBLY, STRIP GUIDE	29
-	1	1	1	1	1	1-455888-0	SPACER, CRIMPER	28
-	1	1	1	1	1	1320928-6	STRIP GUIDE	24
-	1	1	1	1	1	2168083-2	SCR, SKT HD CAP, RoHS, M4 X 8.0	21
-	1	1	1	1	1	1-18028-2	WASHER, FLAT, REG M4	20
-	1	1	1	1	1	2119533-1	STRIPPER, SIDE FEED	19
-	1	1	1	1	1	2119806-1	INSERT, SHEAR	13
-	1	1	1	1	1	3-22280-3	SPRING, COMPRESSION	12
-	1	1	1	1	1	1-356885-4	STOP, SHEAR	11
-	1	1	1	1	1	2119805-1	SHEAR HOLDER, FRONT	10
-	1	1	1	1	1	1803095-1	FLOATING SHEAR, FRONT	9
-	1	1	1	1	1	3-1803054-8	ANVIL, COMBINATION	8
-	-	-	-	-	-	-	-	7
-	-	-	-	-	-	-	-	6
-	1	1	1	1	1	1-2119780-2	DEPRESSOR, SHEAR	5
-	1	1	1	1	1	2-238011-2	BLOCK, CRIMPER SPACER	4
-	1	1	1	1	1	1-1633964-4	CRIMPER, INSULATION OVERLAP PREMIUM	3
-	1	1	1	1	1	455888-1	SPACER, CRIMPER	2
-	1	1	1	1	1	2-1633860-8	CRIMPER, WIRE	1

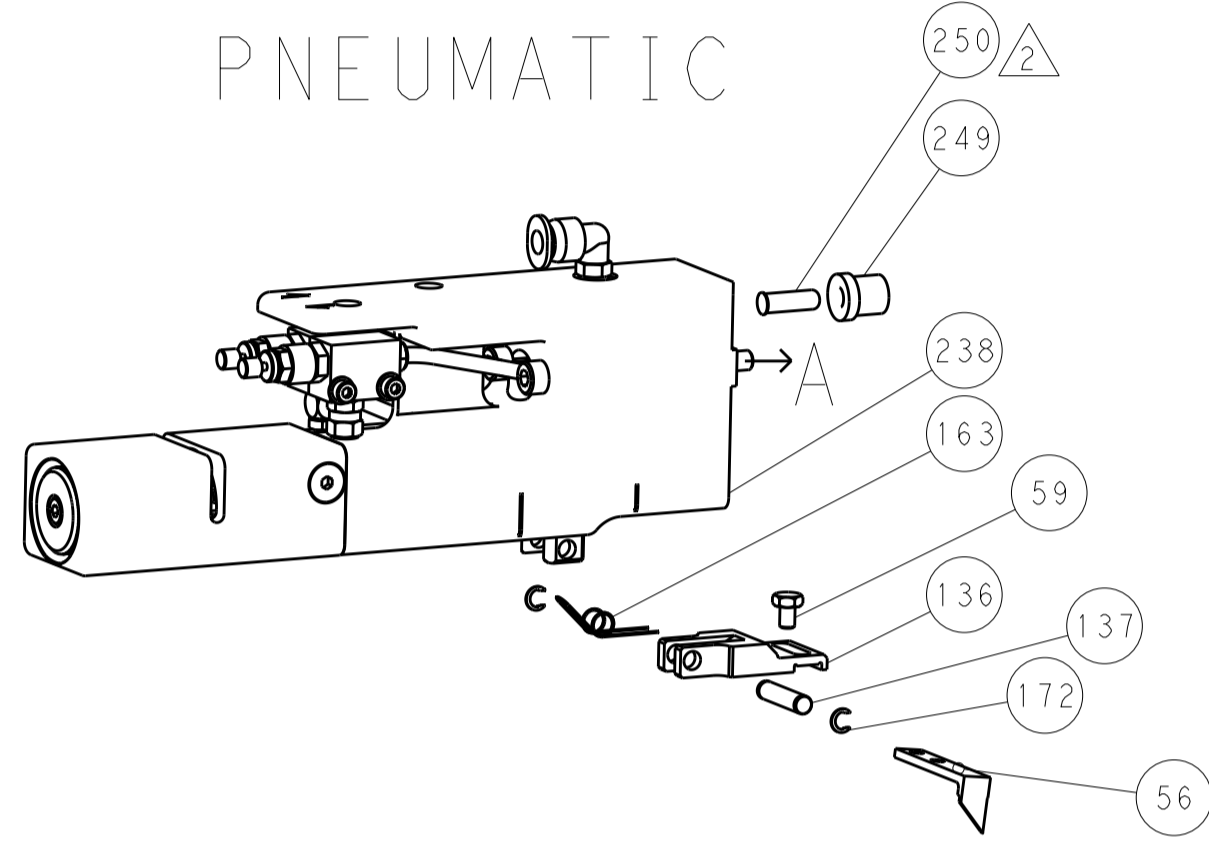
DIMENSIONS:		TOLERANCES UNLESS OTHERWISE SPECIFIED:		OWN	CHK	DATE	NAME
mm	0 PLC ±.5	1 PLC ±.13	3 PLC ±.013	STAKEM	G. BAILEY	29OCT2013	Ocean Side Feed Applicator
MATERIAL:		FINISH:		APVD	E. BRIN	29OCT2013	SIZE CAGE CODE DRAWING NO
				RESTRICTED TO		A1 00779 ©=2266131	
Customer Accessible Production Drawing				SCALE	SHEET	1	REV
				1:2	1	4	A

REVISONS		DATE	OWN	APVD
LOC	DIST			
A	66			
P	LTM	DESCRIPTION		
		SEE SHEET 1		

### FEED TYPE MECHANICAL



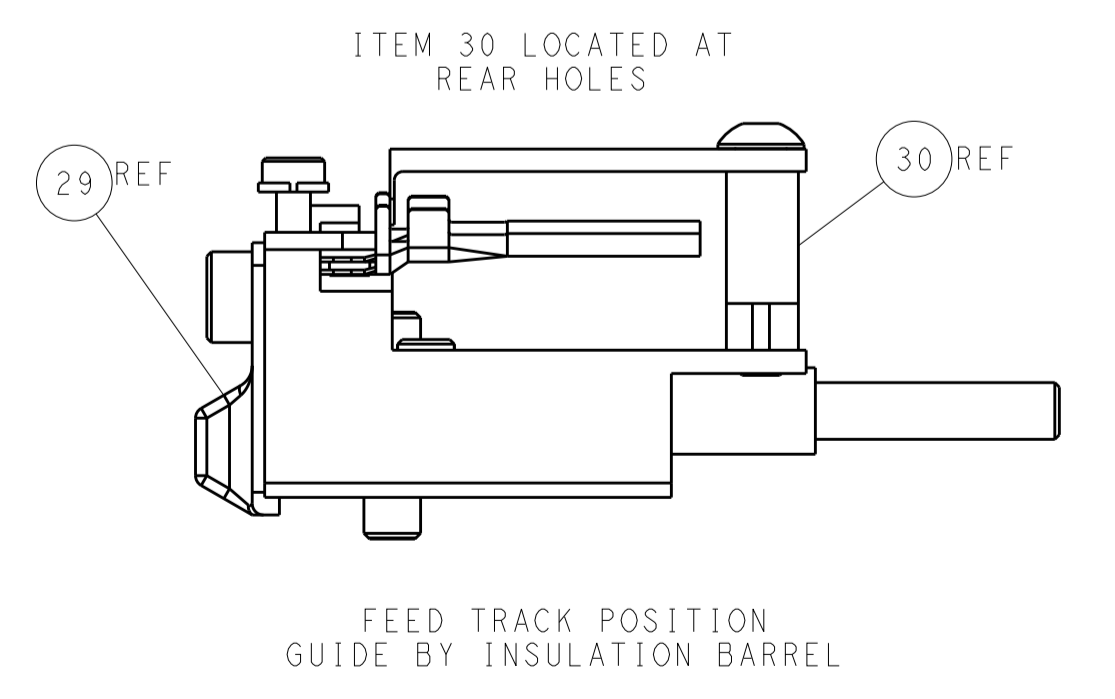
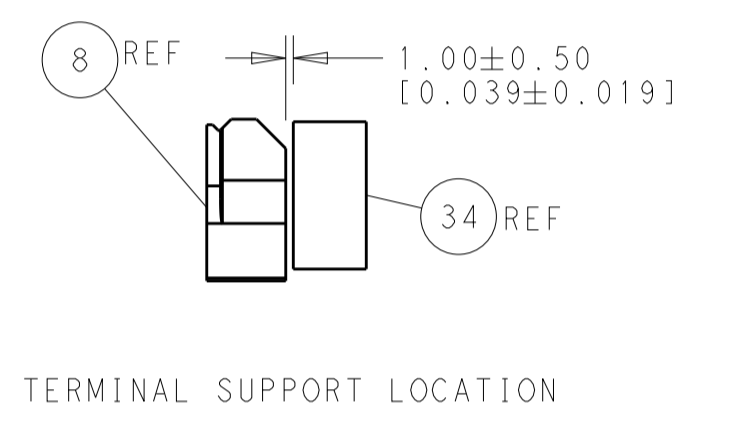
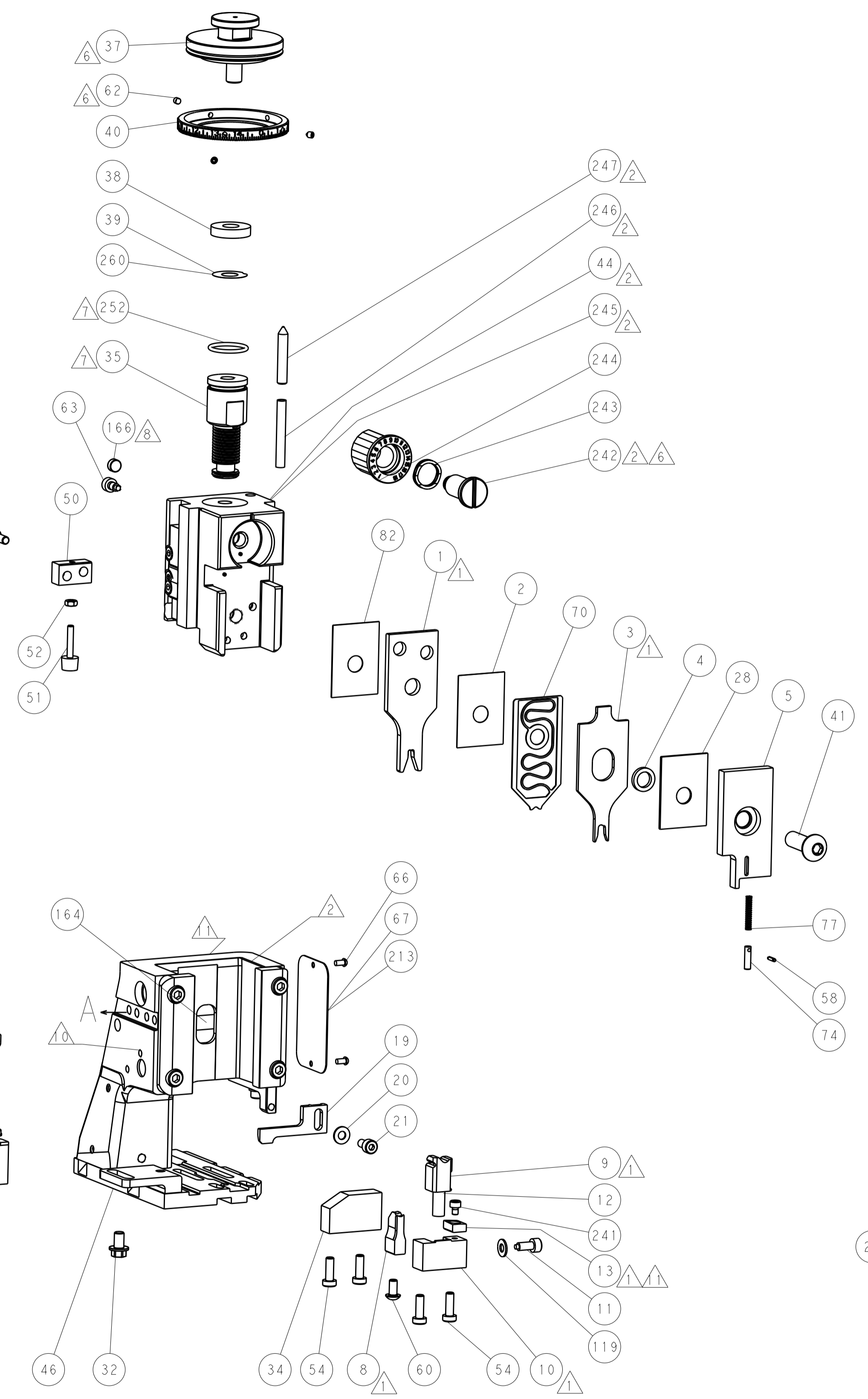
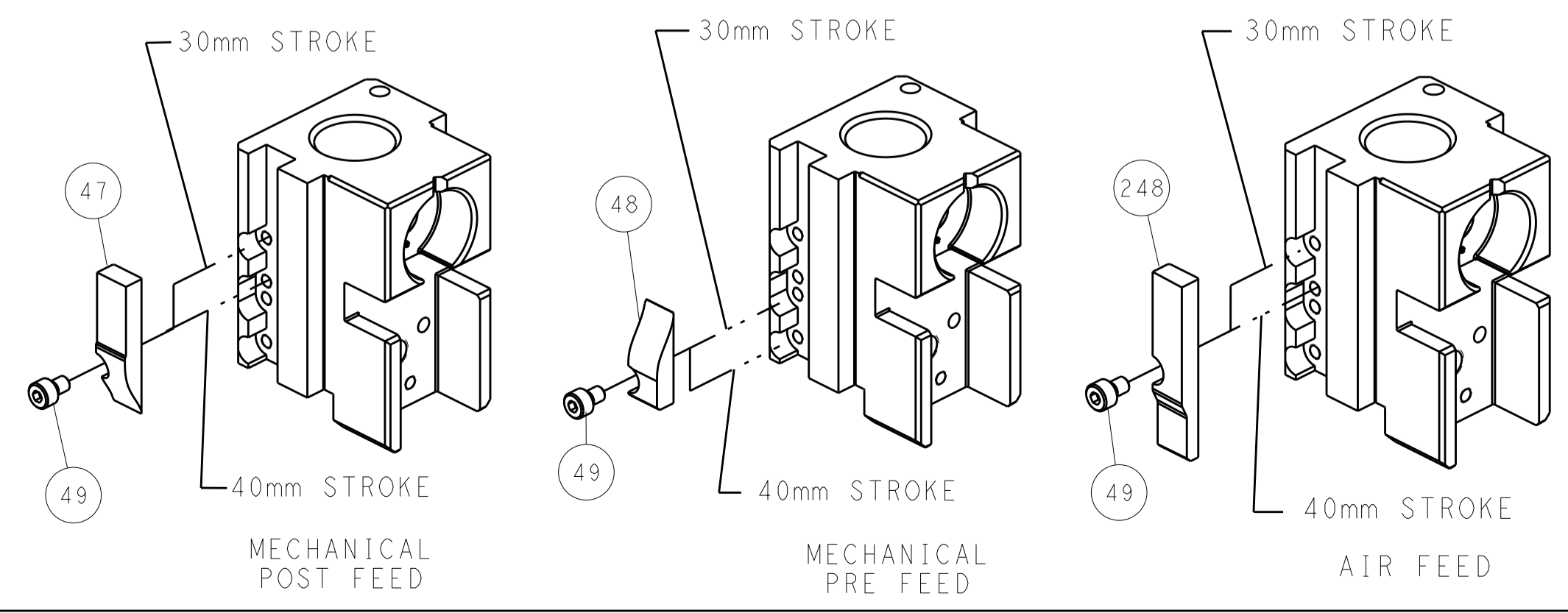
### PNEUMATIC



### SERVO LATCH PLATE



### CAM POSITIONS



**ATLANTIC VERSION**  
 Shown on sheets 1 of 4 & 2 of 4  
 (Pacific version shown on sheets 3 of 4 & 4 of 4)

DIMENSIONS:		TOLERANCES UNLESS OTHERWISE SPECIFIED:		DWN: STAKEM 29OCT2013		TE Connectivity	
mm	0 PLC ±0.5	1 PLC ±0.5	2 PLC ±0.13	3 PLC ±0.013	4 PLC ±0.0001	CHK: G. BAILEY 29OCT2013	Harrisburg, PA 17105-3608
MATERIAL:		FINISH:		APVD: T. ERLIN 29OCT2013		NAME: Ocean Side Feed Applicator	
				WEIGHT:		SIZE: CAGE CODE: DRAWING NO: A11 00779 ©=2266131	
				Customer Accessible Production Drawing		SCALE: 1:2 SHEET 2 of 4 REV A	

PACIFIC VERSION TERMINATOR INTERFACE ADAPTER	PART NUMBER	REVISION	DESCRIPTION	FEED TYPE	APPLICATOR STYLE CONVERSION CHART						
					CONVERT TO	PART NUMBERS REQUIRED					
	2-2266131-1	A	FINE CRIMP HEIGHT ADJUST	MECHANICAL	PNEUMATIC FEED	2119950-1	1338685-1	5-18022-5	2119641-2	2119799-1	2063440-1
					SERVO LATCH PLATE	2119951-1	-	8-2266131-5	1901094-3	1-1752354-7	2168400-6 (QUANTITY 2)
					SMART APPLICATOR	2161326-1	-	8-2266131-4	-	-	-
	2-2266131-2	A	FINE CRIMP HEIGHT ADJUST	PNEUMATIC	MECHANICAL FEED	2119949-1	1338685-1	5-18022-5	2119653-2	-	-
					SERVO LATCH PLATE	2119951-1	-	8-2266131-5	1901094-3	1-1752354-7	2168400-6 (QUANTITY 2)
					SMART APPLICATOR	2161326-1	-	8-2266131-4	-	-	-
	2-2266131-5	A	FINE CRIMP HEIGHT ADJUST	SERVO LATCH PLATE	MECHANICAL FEED	2119949-1	1338685-1	5-18022-5	2119653-2	-	-
					PNEUMATIC FEED	2119950-1	1338685-1	5-18022-5	2119641-2	2119799-1	2063440-1
	2-2266131-7	A	FINE CRIMP HEIGHT ADJUST	NONE	-	-	-	-	-	-	-
	7-2266131-7	A	CRIMP TOOLING KIT	-	-	-	-	-	-	-	-

APPLICATOR DATA		
CRIMP	SIZE	TYPE
WIRE	3.20 mm [1.26]	F
INSUL	4.10 mm [1.61]	OV
APPLICATOR INSTRUCTIONS 408-10389		

TERMINAL DATA: FCI TERMINAL	CI_CRIMP_SPEC_SRC_STR
TERMINAL NAME: SICMA2 2.8 X 0.8 MALE	
WIRE STRIP LENGTH 4.40-4.42 mm [1.73-.174 IN]	INSULATION DIAMETER RANGE Ø3.20-3.90 mm [1.26-.154 IN]
TERMINAL APPLICATION SPECIFICATION	
TERMINALS APPLIED	
TE TERMINAL	FCI TERMINAL
1949190-1	211CL3S3120

WIRE SIZE	CRIMP HEIGHT mm [INCH]	CRIMP HEIGHT REFERENCE SETTING
5.00mm2	2.65 +/- 0.05 [1.04 +/- .002]	4.7
4.00mm2	2.34 +/- 0.05 [1.092 +/- .002]	8.0
3.00mm2	2.10 +/- 0.05 [1.083 +/- .002]	10.5

- RECOMMENDED SPARE PARTS
- GREASE BEARING SURFACES LIGHTLY
- LUBRICATE DAILY PER THE APPLICATOR INSTRUCTION SHEET SUPPLIED WITH THE APPLICATOR.
- APPLICATOR SPECIFIC DATA TO BE ENTERED INTO BLANK MEMORY CHIP AT ASSEMBLY. SEE BELOW FOR PART NUMBER:  
 MECHANICAL FEED WITH "SMART APPLICATOR" CONVERSION: 8-2266131-4  
 PNEUMATIC FEED WITH "SMART APPLICATOR" CONVERSION: 8-2266131-4  
 SERVO FEED WITH "FINE CRIMP HEIGHT ADJUST": 8-2266131-5
- ADJUSTMENT OF THE STRIPPER MAY BE REQUIRED WHEN MOVING THE APPLICATOR BETWEEN BENCH AND LEADMAKER APPLICATIONS.
- APPLY PART NUMBER 1-23419-5 LOCTITE TO THREADS OF ITEMS 62 & 242.
- GREASE THREADS, GROOVE AND O-RING ON ITEMS 139 & 152.
- MAGNET MUST BE ORIENTED CORRECTLY IN ORDER TO PROPERLY ACTUATE THE COUNTER.
- CRIMP HEIGHT REFERENCE SETTING WAS THE SETTING USED WHEN THE APPLICATOR WAS QUALIFIED AT THE FACTORY. ADJUSTMENT MAY BE NECESSARY WHEN RUNNING APPLICATOR IN THE FIELD.
- SPARE FEED CAM STORAGE LOCATION REFER TO INSTRUCTION SHEET FOR ADDITIONAL INFORMATION.
- TO CONVERT THE APPLICATOR TO A NON-CARRIER CUTTING STYLE, REMOVE ITEM 13 AND ATTACH TO THE LOCATION ON BACK SIDE OF THE HOUSING. REFER TO INSTRUCTION SHEET FOR ADDITIONAL INFORMATION.

**\*WARNING**  
 ON INSTALLATION, SET WIRE DISC, ITEM 40 TO LARGEST WIRE SIZE SETTING. USE OF SETTINGS BELOW MINIMUM REQUIRED CRIMP HEIGHT SETTING WILL CAUSE DAMAGE TO CRIMP TOOLING.

TEC Standard Metric Part Template	ITEM NO
- 1 1 1 1 1 2119782-1 FINE ADJUST HEAD ASM, PACIFIC STYLE	251
- - - 1 - 2119640-1 PUSH ROD, AIR FEED	250
- - - 1 - 2079988-1 BUSHING, LCH5-12, MISUMI	249
- 1 1 1 1 1-22279-3 SPRING, COMPRESSION	246
-77 -27 -25 -22 -21 PART NO	DESCRIPTION
	ITEM NO

**PACIFIC VERSION**  
 Shown on sheets 3 of 4 & 4 of 4  
 (Atlantic version shown on sheets 1 of 4 & 2 of 4)

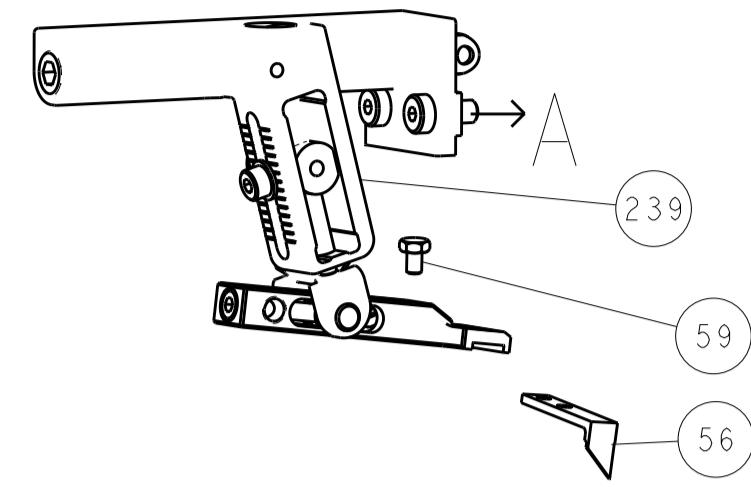
SET UP GAUGE	LOC	DIST	REVISIONS					
2119599-1	A	66	P	LTN	DESCRIPTION	DATE	OWN	APVD
			-	-	SEE SHEET 1	-	-	-

- 1 1 1 1 1 2119082-8 CAM, SNAIL, INSULATION ADJUSTMENT	244
- 1 1 1 1 1 2079764-1 WASHER, WAVE SPRING, CREST-TO-CREST	243
- 1 1 1 1 1 2119083-1 RETAINER, INSULATION DIAL	242
- 1 1 1 1 1 7-18023-7 SCR, SKT HD CAP M3 X 4.0	241
- - 2 - - 2168400-6 SHCS, LOW HEAD, RoHS, M5 X 16	240
- - - - 1 2119580-1 MECHANICAL FEED ASSEMBLY	239
- - - - 1 2063440-1 AIR FEED MODULE	238
- - 1 - - 2119740-2 TAG, IDENTIFICATION	213
- - 1 - - 1901094-3 SPACER, FEEDER	198
- - - 2 - 21045-3 RING, RETAIN, EXTERN, 3/16 CRESCENT	172
- 1 1 1 1 994969-1 MAGNET, RARE EARTH HIGH ENERGY	166
- REF REF REF REF 994970-2 COUNTER, MAGNETIC	164
- - - 1 - 240638-1 SPRING, FEED FINGER	163
- 1 1 1 1 8-21084-1 O-RING, .801 ID, .070 DIA. MAT.	152
- - - 1 - 2119641-2 FEED CAM, AIR FEED	151
- 1 1 1 1 2119798-2 DETENT PIN	145
- 1 1 1 1 2079383-8 SCR, BHSC, RoHS (M4 X 16)	144
- 4 4 4 4 2168400-5 SHCS, LOW HEAD, RoHS, M4 X 20	143
- - - - 1 2119653-2 FEED CAM, POST FEED	142
- 1 1 1 1 1-2119656-0 APPLICATOR BASIC ASSEMBLY, SF	141
- 1 1 1 1 2119650-1 RAM, ASIAN STYLE, SIDE FEED	140
- 1 1 1 1 2119092-2 BOLT, ADJUSTMENT	139
- - - 1 - 3-23627-7 PIN, RETAIN, GRVD, 3/16 X .854	137
- - - 1 - 2119799-1 HOLDER, FEED FINGER, AF	136
- - REF - - SEE NOTE 4 MEMORY CHIP, PROGRAMMED	135
- - 1 - - 1633743-1 SERVO FEED LATCH ASM	133
- 1 1 1 1 1-18028-2 WASHER, FLAT, REG M4	119
- - REF - - 2119944-1 FEED FINGER ASSEMBLY, SF	117
- 1 1 1 1 455888-4 SPACER, CRIMPER	82
- 1 1 1 1 22878-8 SPRING, COMPRESSION	77
- 1 1 1 1 854769-4 HOLDER, INS	74
- 1 1 1 1 2119956-1 DOCUMENTATION PACKAGE	71
- 1 1 1 1 2119791-9 DEPRESSOR, WIRE	70
- 1 - 1 1 2119740-1 TAG, IDENTIFICATION	67
- 2 2 2 2 2168078-1 SCREW, DRIVE, RH, RoHS, 2 x .188	66
- 1 1 1 1 2119793-1 LIMITER, ADJUSTMENT BOLT	63
- 3 3 3 3 992763-5 SCR, SET, SOC, CONE POINT, M3 x 4.0	62
- - - 1 1 5-18022-5 SCR, HEX HD CAP, M4 X 6.0	59
- 1 1 1 1 21028-2 PIN, SLOTTED SPRING .062 X .250	58
- - - 1 1 1338685-1 PAWL, FEED	56
- 2 2 2 2 2168083-3 SCR, SKT HD CAP, RoHS, M4 X 12.0	53
- 1 1 1 1 5018030-1 NUT, HEX, REG, RoHS, M3	52
- 1 1 1 1 811242-5 BUMPER, HOLD DOWN	51
- 1 1 1 1 690753-2 SPACER, TONKER	50
- - - 1 2 18023-9 SCR, SKT HD CAP M4 X 6.0	49
- - - - 1 2119652-1 FEED CAM, PRE FEED	48
- 1 1 1 1 2079383-7 SCR, BHSC, RoHS (M8 X 25)	41
- 1 1 1 1 2119645-1 DISC, NUMBERED FA WIRE ADJUSTMENT	40
- 1 1 1 1 2119957-1 APPLICATOR SHIM PACK	39
- 1 1 1 1 2119644-3 RAM WASHER, PRECISION	38
- 1 1 1 1 1752356-1 SUPPORT, TERMINAL	34
- 2 2 2 2 2079383-5 SCR, BHSC, RoHS (M4 X 20)	33
- 1 1 1 1 2161328-1 HEX HEAD, FLANGED, M5 x 8mm LONG	32
- 1 1 1 1 1320908-7 SPACER, STRIP GUIDE	30
- 1 1 1 1 2119959-1 ASSEMBLY, STRIP GUIDE	29
- 1 1 1 1 1-455888-0 SPACER, CRIMPER	28
- 1 1 1 1 1320928-6 STRIP GUIDE	24
- 1 1 1 1 2168083-2 SCR, SKT HD CAP, RoHS, M4 X 8.0	21
- 1 1 1 1 1-18028-2 WASHER, FLAT, REG M4	20
- 1 1 1 1 2119533-1 STRIPPER, SIDE FEED	19
- 1 1 1 1 2119806-1 INSERT, SHEAR	13
- 1 1 1 1 3-22280-3 SPRING, COMPRESSION	12
- 1 1 1 1 1-356885-4 STOP, SHEAR	11
- 1 1 1 1 2119805-1 SHEAR HOLDER, FRONT	10
- 1 1 1 1 1803095-1 FLOATING SHEAR, FRONT	9
1 1 1 1 1 3-1803054-8 ANVIL, COMBINATION	8
- - - - - - -	7
- - - - - - -	6
- 1 1 1 1 1-2119780-2 DEPRESSOR, SHEAR	5
- 1 1 1 1 2-238011-2 BLOCK, CRIMPER SPACER	4
1 1 1 1 1 1-1633964-4 CRIMPER, INSULATION OVERLAP PREMIUM	3
- 1 1 1 1 455888-1 SPACER, CRIMPER	2
1 1 1 1 1 2-1633860-8 CRIMPER, WIRE	1
-77 -27 -25 -22 -21 PART NO	DESCRIPTION
	ITEM NO

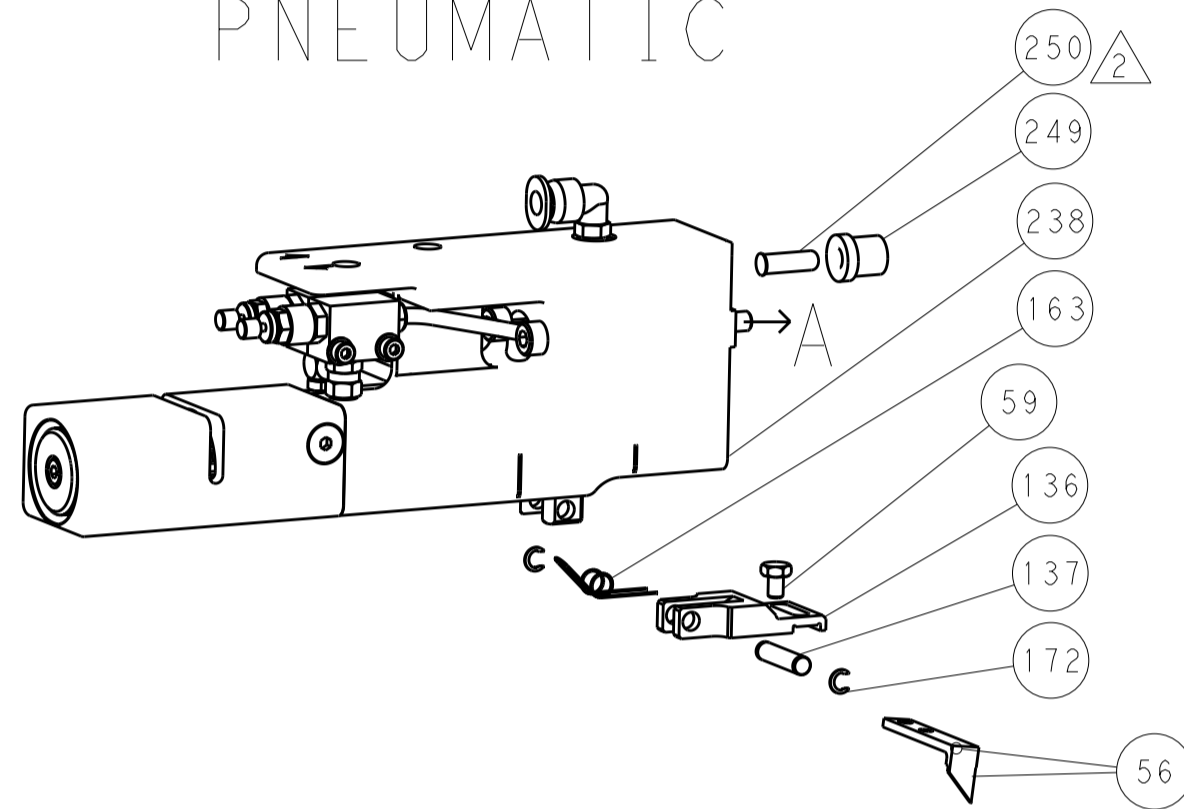
DIMENSIONS: mm		TOLERANCES UNLESS OTHERWISE SPECIFIED:		CHK: STAKEM 29OCT2013	NAME: Ocean Side Feed Applicator
		0 PLC ±.5 1 PLC ±0.5 2 PLC ±0.13 3 PLC ±0.013 4 PLC ±0.001 ANGLES ±.001		CHK: G. BAILEY 29OCT2013	TE Connectivity Harrisburg, PA 17105-3608
MATERIAL:	FINISH:	APVD: T. ELBIN 29OCT2013	PRODUCT SPEC:	SIZE: A1	CAGE CODE: 00779
		APPLICATION SPEC:	RESTRICTED TO:	SCALE: 1:2 SHEET 3 OF 4 REV A	
		WEIGHT:	Customer Accessible Production Drawing	Customer Accessible Production Drawing	

REVISONS		DATE	OWN	APVD
LOC	DIST			
A	66			
P	LTM	DESCRIPTION		
-	-	SEE SHEET 1	-	-

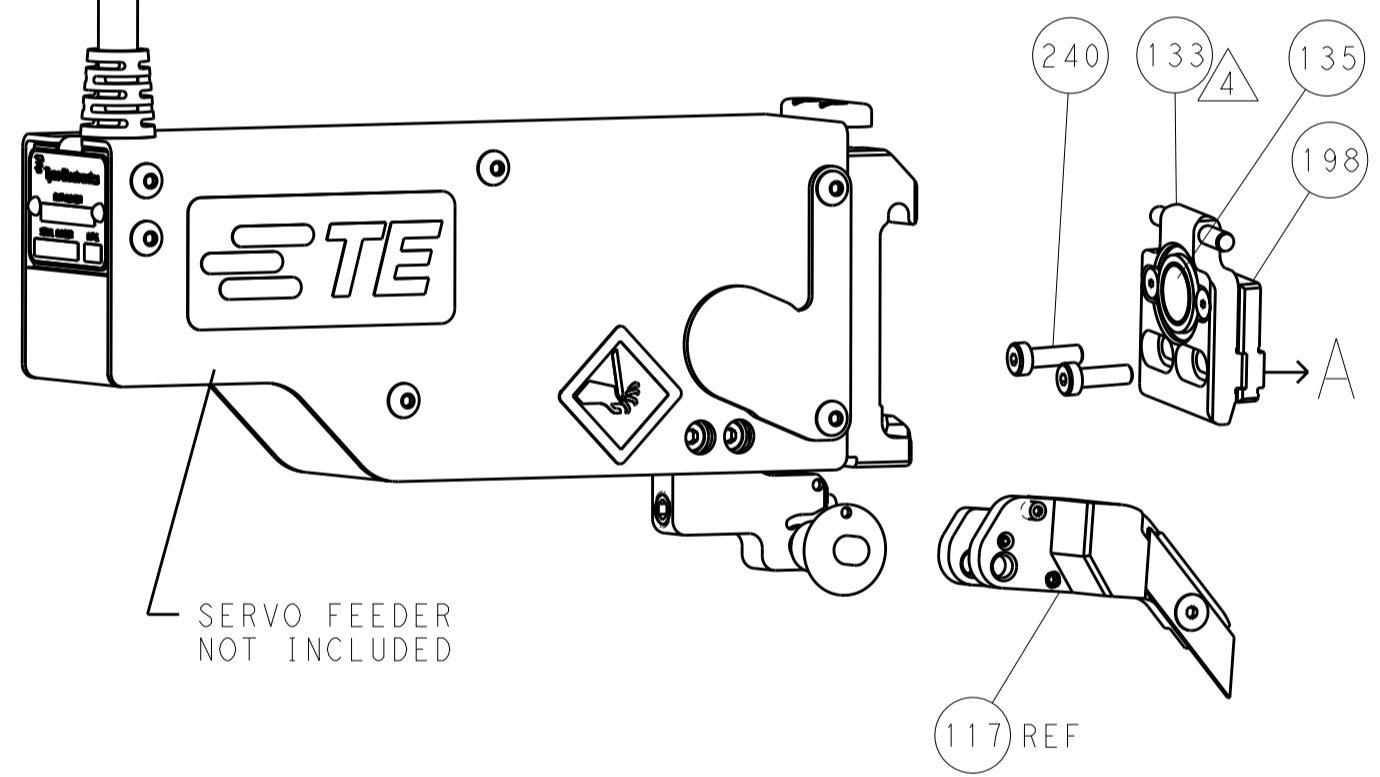
# FEED TYPE MECHANICAL



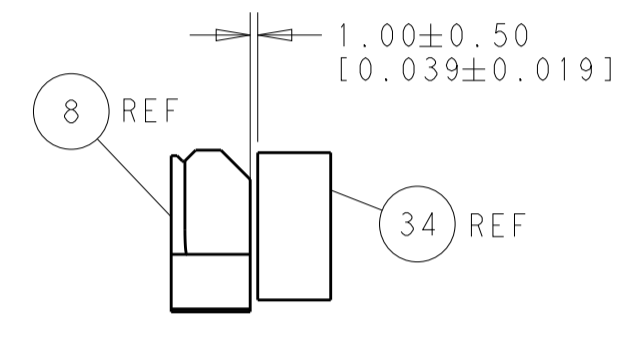
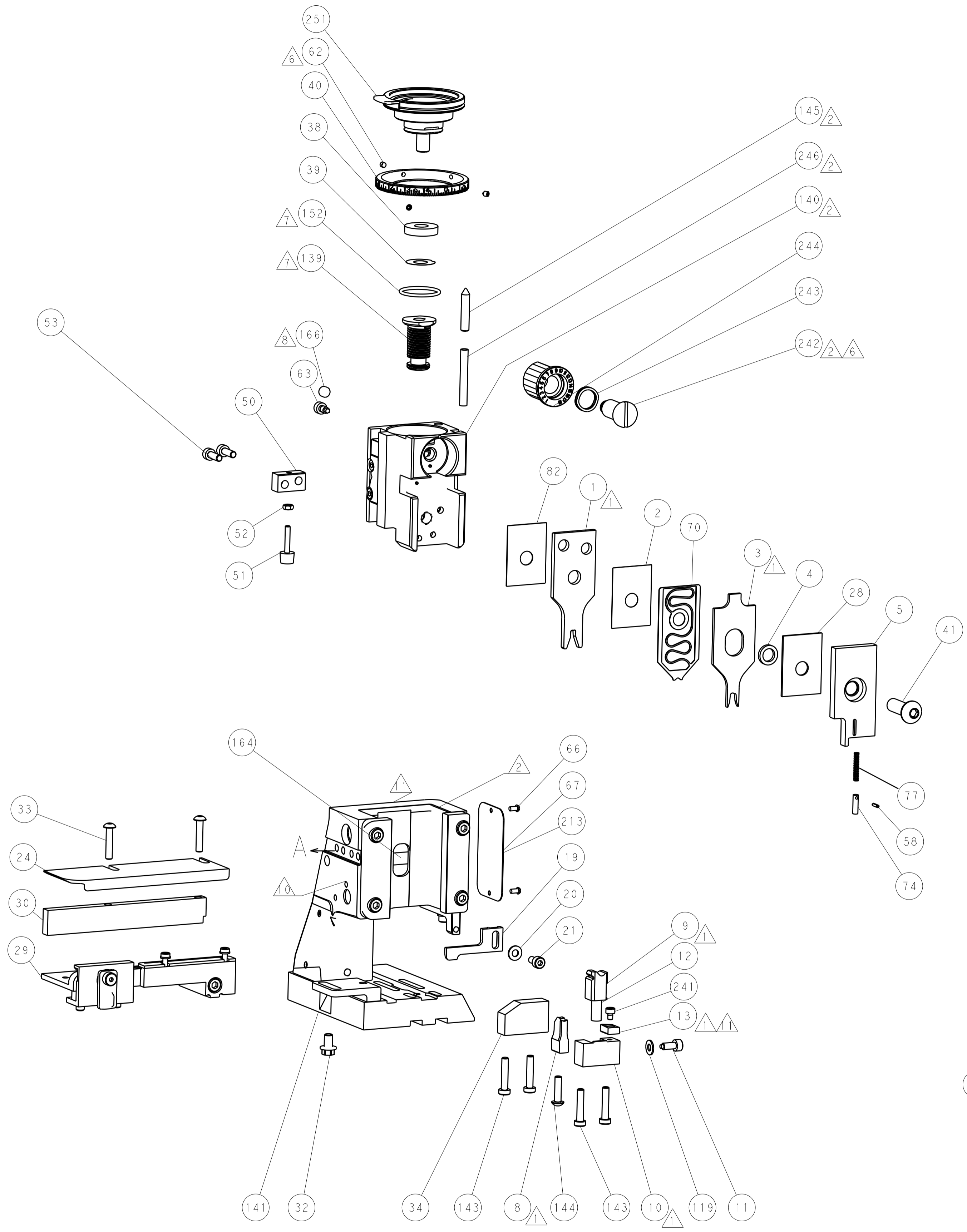
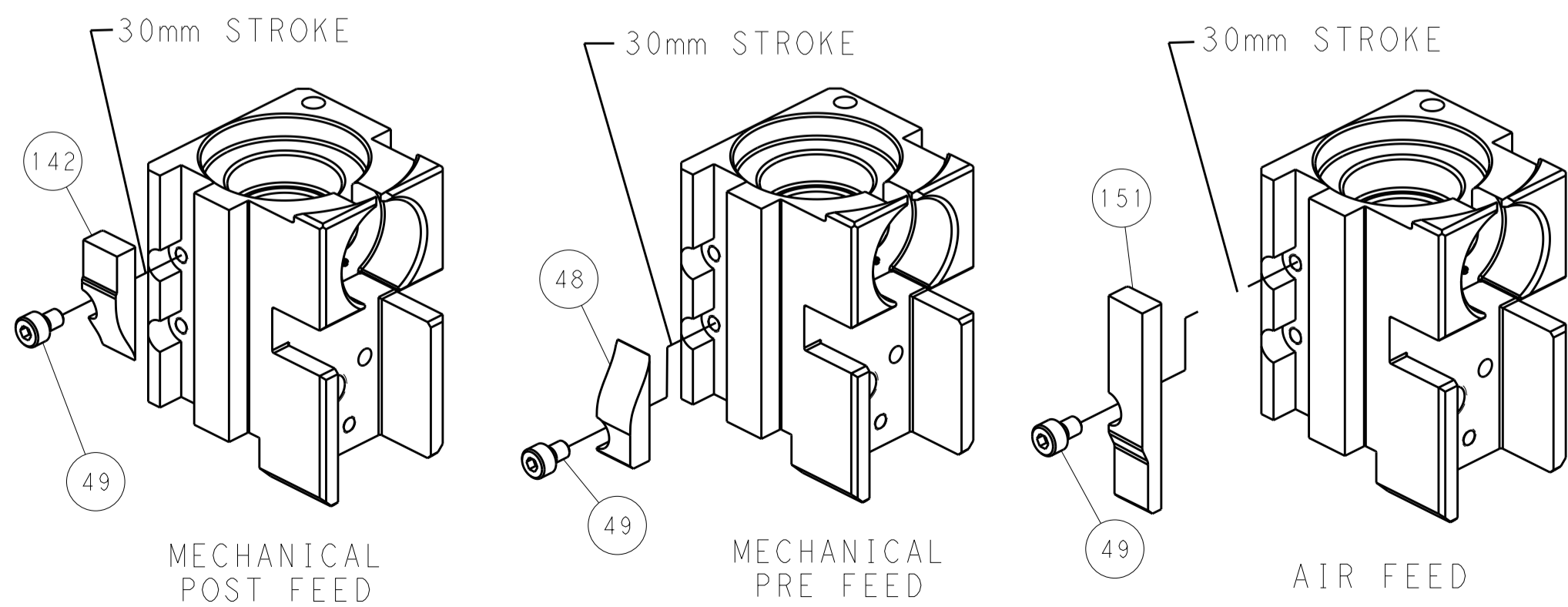
# PNEUMATIC



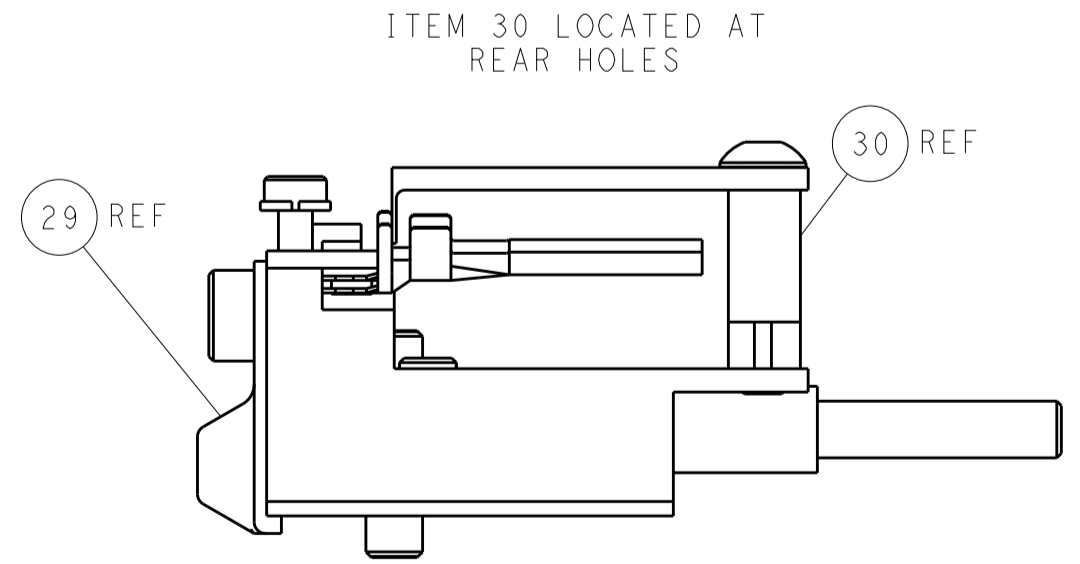
# SERVO LATCH PLATE



# CAM POSITIONS



TERMINAL SUPPORT LOCATION



FEED TRACK POSITION GUIDE BY INSULATION BARREL

**PACIFIC VERSION**  
 Shown on sheets 3 of 4 & 4 of 4  
 (Atlantic version shown on sheets 1 of 4 & 2 of 4)

DIMENSIONS:		TOLERANCES UNLESS OTHERWISE SPECIFIED:		OWN: R. STAKEM 29OCT2013	TE Connectivity Harrisburg, PA 17105-3608
mm	0 PLC ±0.5	1 PLC ±0.5	2 PLC ±0.13	CHK: G. BAILEY 29OCT2013	
	3 PLC ±0.013	4 PLC ±0.001	ANGLES ±0.0001	APVD: T. ERLIN 29OCT2013	NAME: Ocean Side Feed Applicator
MATERIAL:	FINISH:	WEIGHT:	SCALE: 1:2	SIZE: A   00779   C=2266131	RESTRICTED TO:
Customer Accessible Production Drawing				SHEET 4 OF 4	REV A