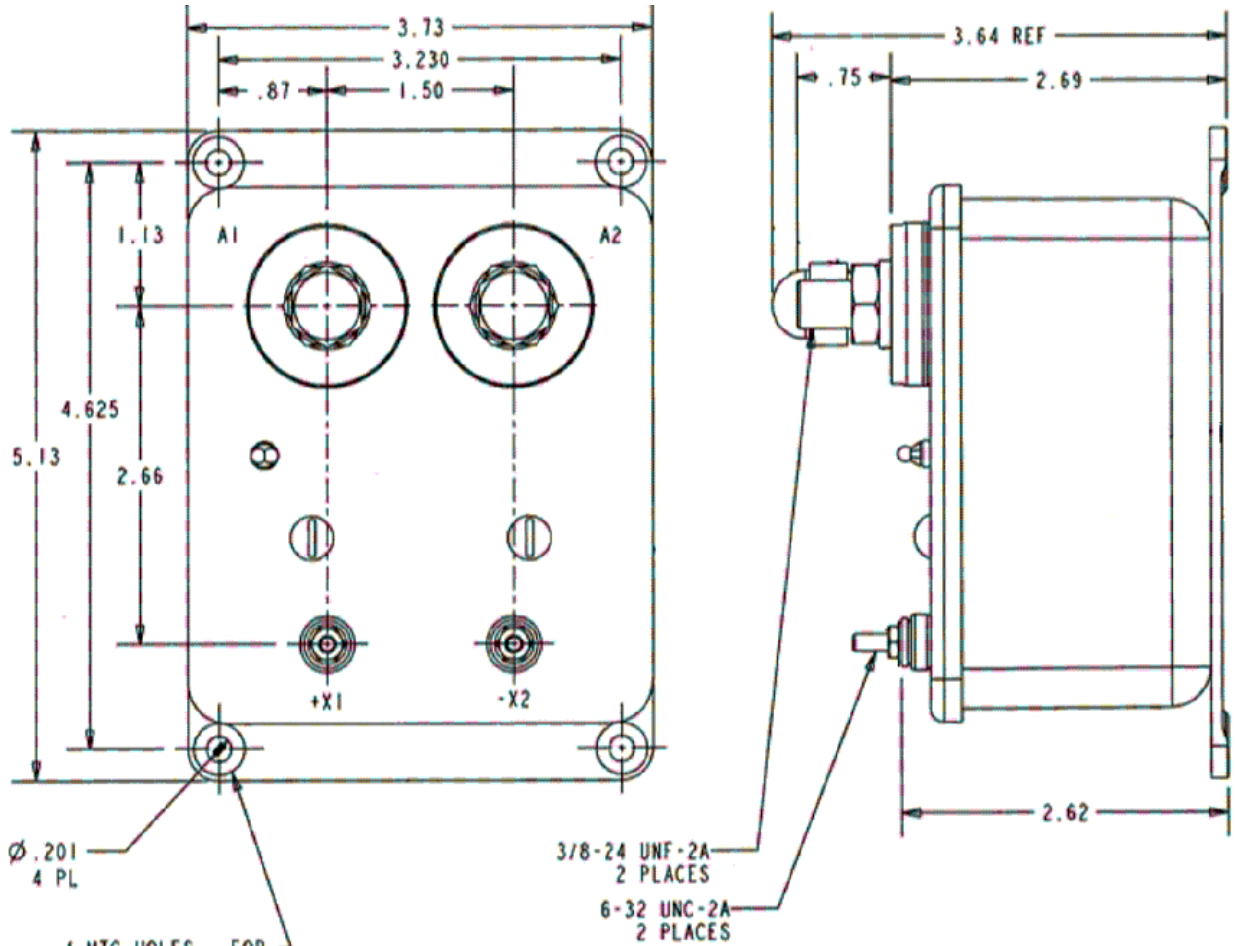


REVISIONS

REV.	ECO	DESCRIPTION	DATE	APPROVED
A	-	RELEASE TO PRODUCTION	12MAY2013	MDM

AH600A1C
 HERM CONTACTOR SPST NO DB
 600 AMP, 28 VAC



Ø .201
 4 PL

4 MTG HOLES. FOR
 ELECTRICAL BONDING.
 FINISH REMOVED FROM BOTH
 MOUNTING SURFACES.
 MOUNTING HOLES ARE SPOT
 FACED.

3/8-24 UNF-2A
 2 PLACES
 6-32 UNC-2A
 2 PLACES

ALL DIMENSIONS ARE IN INCHES



TE CONNECTIVITY
 175 N, DIAMOND STREET MANSFIELD,
 OHIO 44902

TITLE

HERM CONTACTOR SPST NO DB
 600 AMP, 28 VAC

TE P.N.

1616977-6

DWG NO.

AH600A1C

DS DATA SHEET

CAGE CODE
 74063

SCALE
 NONE

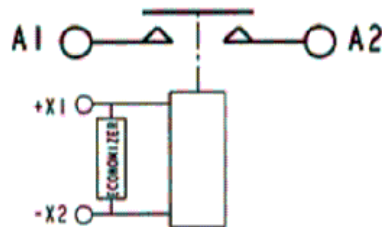
SHEET
 1 OF 2

REV
 A

GENERAL SPECIFICATION

CONSTRUCTION	HERMETIC SEALED
MAIN CONTACTS	
CONFIGURATION	SPST N.O. (DOUBLE BREAK)
VOLTAGE	28 VDC
CURRENT	
RESISTIVE	600 AMPS
RUPTURE	6000 AMPS
INDUCTIVE	250 AMPS
MOTOR	3600 AMPS
COIL DATA	
DUTY CYCLE	CONTINUOUS (ECONOMIZED)
NOM. OPERATE VOLTAGE	28 VDC
MAX. PICKUP VOLTAGE	18 VDC
DROPOUT VOLTAGE	1-7 VDC
COIL CURRENT	
INRUSH (100mS)	5 AMPS MAX @ 28 VDC AND 25°C
HOLD	.200 AMPS @ 28 VDC AND 25°C
ENVIRONMENTAL	
TEMPERATURE	-55°C TO +85°C
ALTITUDE	80,000 FT
LIFE ELECTRICAL	50,000 CYCLES
LIFE MECHANICAL	100,000
WEIGHT(EST.)	2.4 LBS

SCHEMATIC



TE CONNECTIVITY
175 N. DIAMOND STREET MANSFIELD,
OHIO 44902

TITLE

HERM CONTACTOR SPST NO DB
600 AMP, 28 VAC

TE P.N.

1616977-6

DWG NO.

AH600A1C

DS

DATA SHEET

CAGE CODE
74063

SCALE
NONE

SHEET
2 OF 2

REV
A