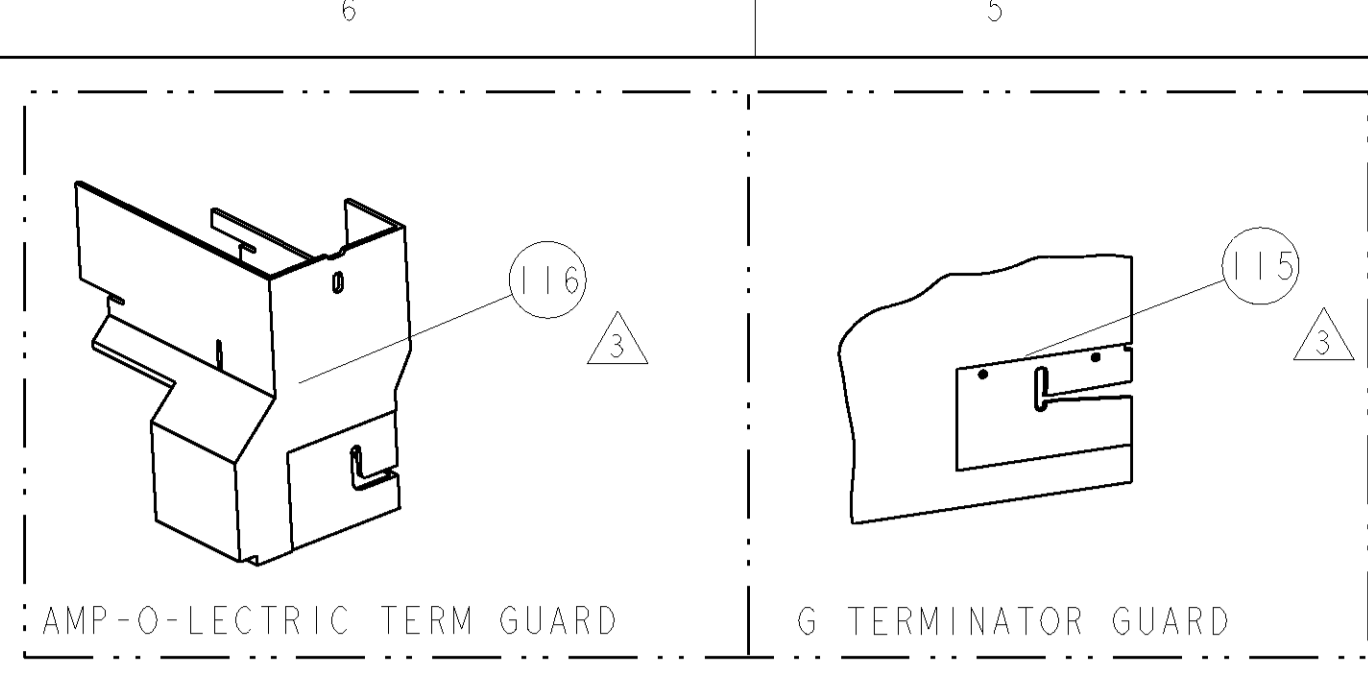


PART NUMBER	REV	FIRST USED	POWER UNIT	FEED TYPE	DESCRIPTION
1855264-1	A	122500-1	LEADMAKER	POST FEED	CUTS CARRIER
1855264-2	A	565435-5	BENCH MODEL K	PRE FEED	CUTS CARRIER
1855264-3	A	354500-1	BENCH MODEL G	PRE FEED	CUTS CARRIER
1855264-6	A	122500-1	LEADMAKER	POST FEED	CONTINUOUS CARRIER
7-1855264-7	A	-	-	-	SPARE PARTS

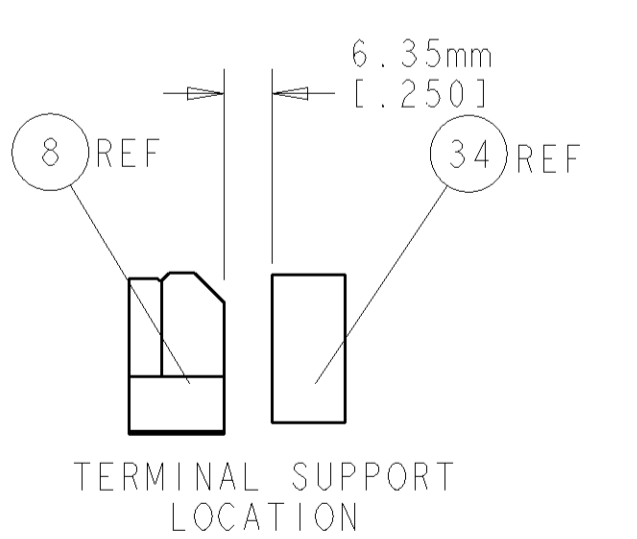
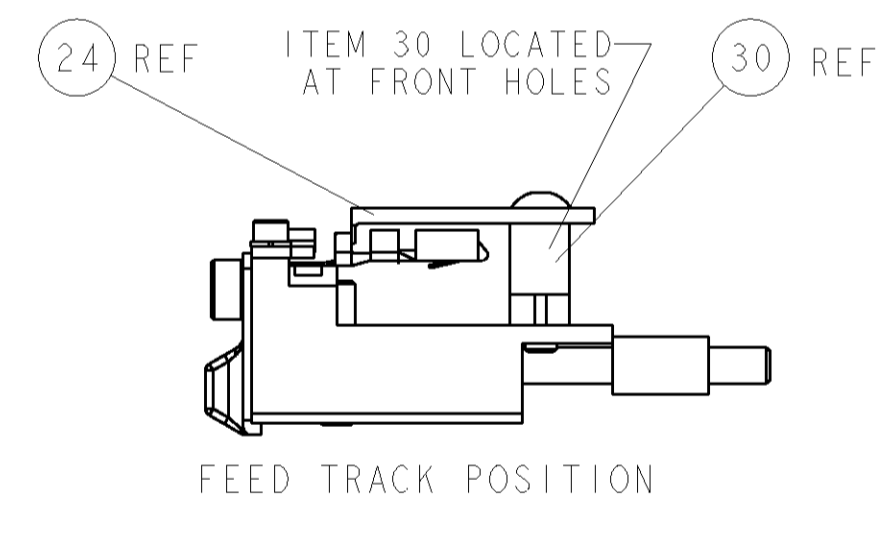
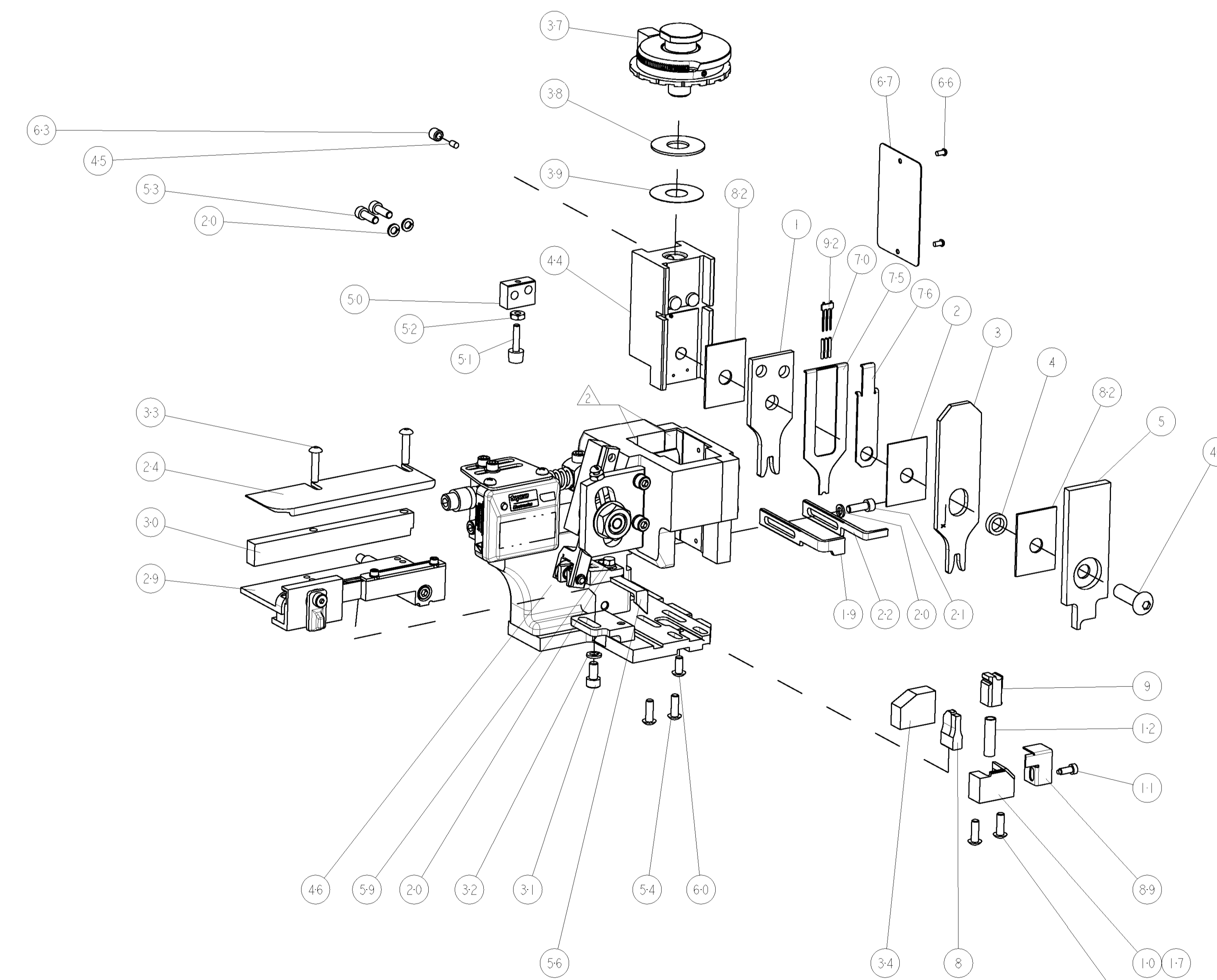


TERMINAL NAME: FEMALE METRI-PACK 280			
TYCO PN	PACKARD PN	PACKARD TERMINAL - PACKARD CRIMP SPECS	
1949343	12059284	CRIMP HEIGHT	WIRE SIZE
-	-	2.15±0.05mm [.085±.002]	3mm ²
-	-	CRIMP	SIZE
-	-	WIRE	3.61mm [.142]
-	-	INSUL	3.56mm [.140]
-	-	FEED	1.5.3mm
-	-	APPLICATOR INSTRUCTIONS	408-8040
-	-	SET UP GAGE	458637-1

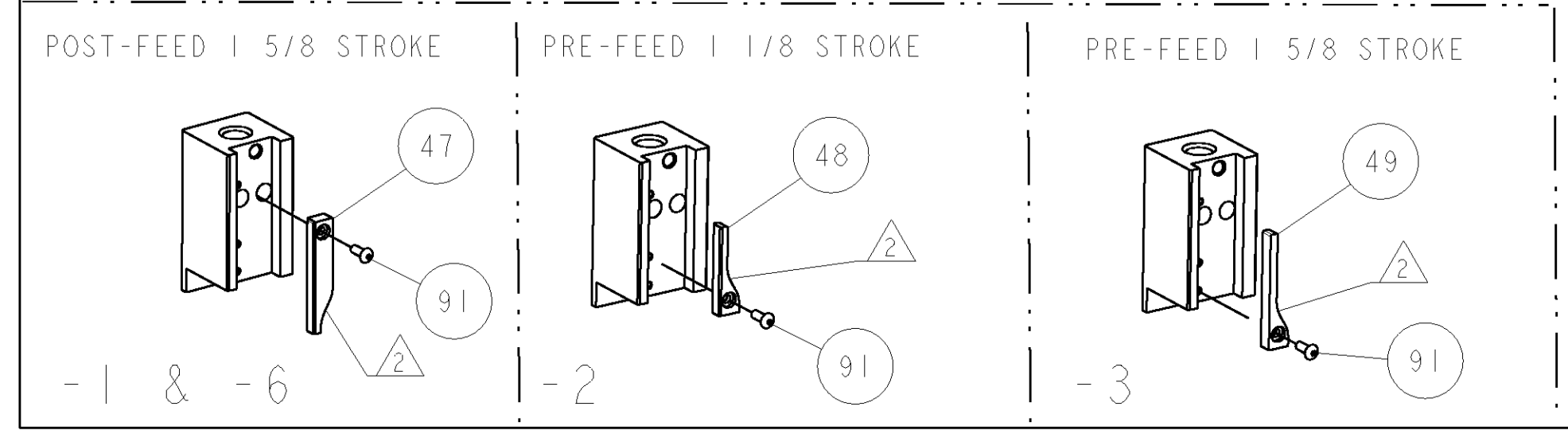
LOC	DIST	REV	DATE	BY	APPD
A	66	A	27APR2007	LG	GB

- △ RECOMMENDED SPARE PARTS
- △ GREASE LIGHTLY
- △ GUARD MUST BE IN PLACE WHEN OPERATING APPLICATOR IN A BENCH MACHINE

*** WARNING**
ON INSTALLATION, SET WIRE DISC TO LARGEST WIRE SIZE SETTING. USE OF SETTINGS BELOW MIN. REQUIRED CRIMP HEIGHT SETTING WILL CAUSE DAMAGE TO CRIMP TOOLING.



QTY	REF	DESCRIPTION	ITEM NO
1	REF	GUARD WINDOW	116
1	REF	INSERT, GUARD	115
1	1	HOLDER, PIN, WIRED	92
1	1	SCR, BTN SKT HD CAP 6-32 X .375	91
1	1	GUARD, FRONT CHIP	89
1	1	SPACER, CRIMPER	82
1	1	DEPRESSOR, SPACER	76
1	1	DEPRESSOR, WIRE	75
1	1	SF APPL INST 408-8040	72
1	1	GENERAL INSTRUCTION PKG	71
3	3	SPRING, COMPRESSION	70
1	1	PLATE, IDENTIFICATION	67
2	2	SCREW, DRIVE	66
1	1	SCR, SET, SELF LOCKING 1/4-20 X .250	63
1	1	SCR, BHSC, SELF-LOCKING, 8-32 X .375	60
1	1	SCR, HEX HD CAP 8-32 X .312	59
1	1	PAWL, FEED	56
4	4	SCR, BTN SKT HD CAP 8-32 X .500	54
2	2	SCR, SKT HD CAP 8-32 X .500	53
1	1	NUT, HEX, REG 6-32	52
1	1	BUMPER, HOLD DOWN	51
1	1	SPACER, TONKER	50
1	1	CAM, PRE FEED, 1 5/8	49
1	1	CAM, PRE FEED, 1 1/8	48
1	1	CAM, POST FEED, 1 5/8	47
1	1	APPL. BASIC SUB ASSY (SIDE WISE MOCA)	46
1	1	PLUG, NYLON	45
1	1	RAM, SIDE FEED	44
1	1	SCR, BTN SKT HD CAP 5/16-24 X 1.00	41
1	1	SHIM SUB-ASSY	39
1	1	SHIM	38
1	1	FINE ADJUST HEAD ASSEMBLY	37
1	1	TERMINAL SUPPORT	34
2	2	SCR, BTN SKT HD CAP 8-32 X .750	33
1	1	WASHER, SPRG LOCK, REG NO 10	32
1	1	SCR, SKT HD CAP 10-32 X .375	31
1	1	SPACER, STRIP GUIDE	30
1	1	ASSEMBLY, STRIP GUIDE	29
1	1	SPACER, CRIMPER	28
1	1	PLATE, STRIP GUIDE	24
1	1	STRIPPER	22
1	1	SCR, SKT HD CAP 8-32 X .500	21
4	4	WASHER, SPRG LOCK, REG NO 8	20
1	1	STRIPPER	19
1	1	SHEAR HOLDER, FRONT (NO CUT)	17
1	1	SPRING, COMPRESSION	12
1	1	STOP, SHEAR	11
1	1	SHEAR HOLDER, FRONT	10
1	1	FLOATING SHEAR, FRONT	9
1	1	ANVIL, COMBINATION	8
1	1	DEPRESSOR, SHEAR	5
1	1	BLOCK, CRIMPER SPACER	4
1	1	CRIMPER, INSULATION PREMIUM	3
1	1	SPACER, CRIMPER	2
1	1	CRIMPER, WIRE	1



QTY	REF	DESCRIPTION	ITEM NO					
-77	-6	-3	-2	-1	U/M	PART NO	DESCRIPTION	ITEM NO

CUSTOMER VIEWABLE ASSEMBLY