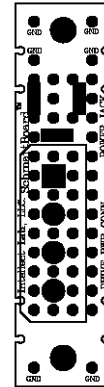
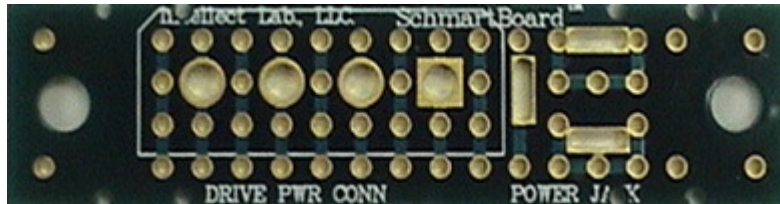


# 201-0101-01 Through Hole Drive Power Connector and Power Jack Board



Actual Size



## 0.5" X 2" Through Hole Driver Power Connector and Power Jack Board

Supports 1 piece drive power connector and 1 piece power jack. 12 ground holes are connected to a copper plane on the bottom side. This board utilizes Schmartboard's mechanical bridge technology that allows you to connect boards together as needed.

### Related Part Numbers:

910-0101-01: 10 Pack of 201-0101-01 Schmartboards

# Schmartboardlez Through Hole Family



Schmartboard, Inc.  
37423 Fremont Blvd.  
Fremont, CA 94536

510-744-9900(P)  
510-744-9909(F)  
<http://www.schmartboard.com>  
<http://www.facebook.com/Schmartboard>  
<http://www.twitter.com/Schmartboard>