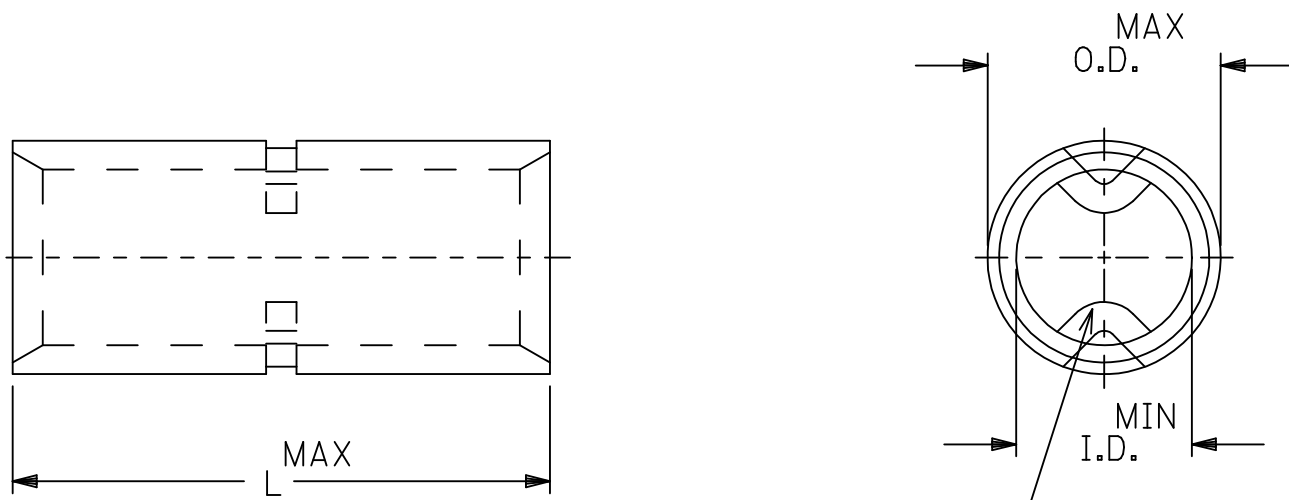


| MATERIAL NO. | ENG NO. | WIRE SIZE | I.D. MIN. | O.D. MAX. | "L" MAX. | WIRE STOP QTY. |
|--------------|---------|-----------|-----------|-----------|----------|----------------|
| 192150034 | D-354 | 8 | .165 | .295 | .864 | ONE |
| 192150040 | E-362 | 6 | .230 | .374 | 1.045 | ONE |
| 192150045 | F-364 | 4 | .277 | .457 | 1.155 | ONE |
| 192150046 | G-372 | 2 | .357 | .538 | 1.280 | ONE |
| 192150047 | H-383 | 1/0 | .439 | .620 | 1.440 | TWO |
| 192150048 | J-388 | 2/0 | .496 | .697 | 1.440 | TWO |
| 192050012 | K-393 | 3/0 | .554 | .760 | 1.540 | TWO |
| 192050013 | L-378 | 4/0 | .621 | .860 | 1.540 | TWO |



WIRE STOP SEE CHART FOR QUANTITY

REDRAWN FROM DOC CD-31003
DRAWN BY RCM 1994/03/17

- NOTES:
1. MATERIAL: COPPER.
2. FINISH: TIN PLATED.
3. PARTS ARE ROHS COMPLIANT.

| | | | | | | | | | | |
|--|---------------------|---------------------------------------|--|-------------------------------------|---|------------------------------|--|------------------------|--|--|
| REDRAWN & RELEASED EC NO: IPG2015-2179 DRWN: GROJAS01 2015/06/30 CH'KD: JMACNEIL 2015/06/30 APPR: JMACNEIL 2015/07/16 | QUALITY SYMBOLS | GENERAL TOLERANCES (UNLESS SPECIFIED) | | DIMENSION STYLE INCH ONLY | | SCALE --- | DESIGN UNITS INCH | THIRD ANGLE PROJECTION | | |
| | | | mm | INCH | DRAWN BY GROJAS01 | DATE 2015/06/30 | TITLE VERSAKRIMP BUTT CONNECTORS | | | |
| | | 4 PLACES | ± --- | ± --- | CHECKED BY JMACNEIL | DATE 2015/06/30 | | | | |
| | | 3 PLACES | ± --- | ± .005 | APPROVED BY JMACNEIL | DATE 2015/07/16 | | | | |
| | | 2 PLACES | ± 0.13 | ± .01 | MATERIAL NO. SEE CHART | DOCUMENT NO. SD-19215-007 | | | | |
| 1 PLACE | ± 0.25 | ± --- | ANGULAR ± 1/2° | | THIS DRAWING CONTAINS INFORMATION THAT IS PROPRIETARY TO MOLEX INCORPORATED AND SHOULD NOT BE USED WITHOUT WRITTEN PERMISSION | | | | | |
| 0 PLACE | ± | ± | DRAFT WHERE APPLICABLE MUST REMAIN WITHIN DIMENSIONS | | | | | | | |