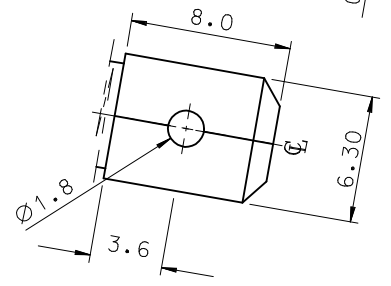


NOTES

1. MATERIAL : BRASS 0.40 ± 0.03 THK'
2. FINISH : POST-TIN PLATING
3. RECOMMENDED LENGTH OF WIRE STRIP IS 5.3-5.8

MATERIAL NO.	PART NO.	W1	H1	W2	H2	WIRE	INSUL.DIA.
357253910	35725-3910	3.1	3.8	4.9	5.6	AWG#18-#16	MAX.Ø3.12
357254910	35725-4910			6.5	6.35	AWG#14	MAX.Ø3.50
357255910	35725-5910	4.0	4.2			AWG#12	MAX.Ø3.98

# WIRE : UL1015



REVISED EC NO: KOR2012-0110 DRWN:HYOU 2012/04/23 CHKD:SH CHU APPR:YSK1M02 2012/04/25 B1	DESCRIPTION QUALITY SYMBOLS ▽=0 ▽=0	GENERAL TOLERANCES (UNLESS SPECIFIED)		DIMENSION STYLE MM ONLY		SCALE 4:1	DESIGN UNITS METRIC	THIRD ANGLE PROJECTION			
		4 PLACES ± --- ± --- 3 PLACES ± --- ± --- 2 PLACES ± 0.30 ± --- 1 PLACE ± 0.20 ± --- 0 PLACE ± ±	mm INCH	DRAWN BY W.Y.YANG	DATE 1993/06/26	TITLE .250 PIGGY BACK					
		ANGULAR ± 1 °		CHECKED BY B.K.CHOI	DATE 1993/06/26	APPROVED BY C.W.LEE					
		DRAFT WHERE APPLICABLE MUST REMAIN WITHIN DIMENSIONS		SEE TABLE		MATERIAL NO.	DOCUMENT NO. SD-35725-*910	SHEET NO. 1 OF 1			

**molex**

THIS DRAWING CONTAINS INFORMATION THAT IS PROPRIETARY TO MOLEX INCORPORATED AND SHOULD NOT BE USED WITHOUT WRITTEN PERMISSION