

# Type TMS-R Time Lag Micro Fuse Radial Leaded – Short Leaded

Designed to Meet UL/CSA Specifications



www.optifuse.com (619) 593-5050

**Agency Standards and Listings:**



**Voltage:** 250V

**Material**

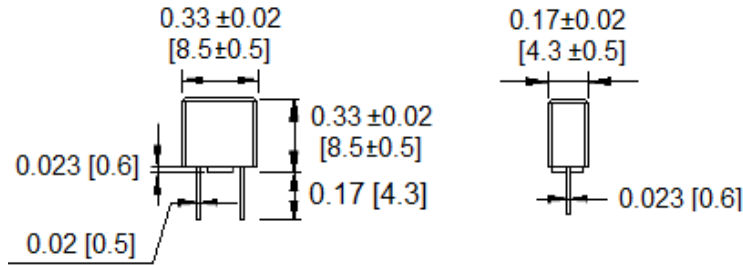
- Body:** Thermoplastic UL94V0
- Pin:** Copper Alloy, Tin plated
- Element:** Silver Alloy

**Interrupt Ratings:** 50A @ 250 VAC

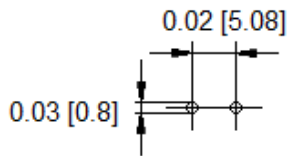
**Electrical Characteristics:**

Rated Current	100%	200%
50mA-10A	Carry	60 s Max

**Mechanical Dimensions: Inches [mm]**



**MOUNTING HOLES**



Cartridge Catalog Number	Ampere Rating	Voltage Rating	I <sup>2</sup> T
TMS-R-50mA	50mA	250V	0.0056
TMS-R-60mA	60mA		0.0075
TMS-R-63mA	63mA		0.009
TMS-R-80mA	80mA		0.014
TMS-R-100mA	100mA		0.025
TMS-R-125mA	125mA		0.044
TMS-R-160mA	160mA		0.058
TMS-R-200mA	200mA		0.1
TMS-R-250mA	250mA		0.17
TMS-R-300mA	300mA		0.22
TMS-R-315mA	315mA		0.26
TMS-R-400mA	400mA		0.32
TMS-R-500mA	500mA		0.58
TMS-R-600mA	600mA		0.67
TMS-R-630mA	630mA		0.75
TMS-R-700mA	700mA		0.85
TMS-R-800mA	800mA		0.98
TMS-R-1A	1A		2.8
TMS-R-1.25A	1.25A		3.8
TMS-R-1.5A	1.5A		4.8
TMS-R-1.6A	1.6A	5.2	
TMS-R-2A	2A	7.5	
TMS-R-2.5A	2.5A	14	
TMS-R-3A	3A	19	
TMS-R-3.15A	3.15A	22	
TMS-R-3.5A	3.5A	24	
TMS-R-4A	4A	27	
TMS-R-5A	5A	59	
TMS-R-6.3A	6.3A	100	
TMS-R-7A	7A	122	
TMS-R-8A	8A	160	
TMS-R-10A	10A	220	

**Warning:**



- Operation beyond the specified maximum ratings or improper use may result in damage and possible electrical arcing and/or flame.
- Micro Fuse device are intended for occasional overcurrent protection. Application for repeated overcurrent condition and/or prolonged trip are not anticipated.
- Avoid contact of Micro Fuse device with chemical solvent. Prolonged contact will damage the device performance.