

# High-Density D-Sub Connectors With Machined Contacts

**molex**<sup>®</sup>

Molex High-Density D-Sub Connectors provide a high-current rating (up to 5.0A per pin) due to their precision-machined contacts, and the high-density configuration allows for increased pin count compared to standard D-sub connectors



26 Position, Size 2 R/A Board Connector

## Features and Benefits

### Many different combinations of materials and plating

Shells options: Steel, brass and stainless steel

### Gold-plated contacts



### Machined contacts

Superior current-carrying capacity. Offers contact variety and plating options. High mating cycles and increased strength over stamped contacts



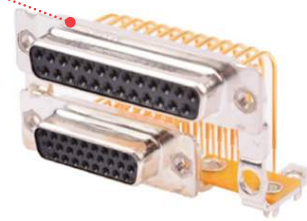
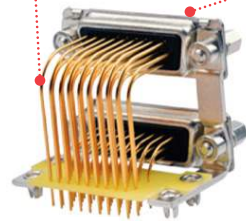
### RoHS compliant

Meets European Union regulations for banned materials hazardous to the environment

### Dual ports

Many configurations available  
Plug & Socket for top or bottom  
Various installation heights

Snap-in board locks for easy and secure assembly prior to soldering



### Non-magnetic available

Non-ferrus materials  
No nickle underplating permeability  $\mu_r \leq 1.0025$  100% tested for permeability



### Water-proof IP67 available

Zinc die-cast frames are watertight, providing mechanical strength, shielding and are rust retardant



### Silicone gasket

Front and rear panel mount available



## Applications

### Commercial Aerospace

Aircraft cabins

### Medical Equipment

MRI

Patient monitoring

### Test equipment and Control devices

### Commercial Vehicle

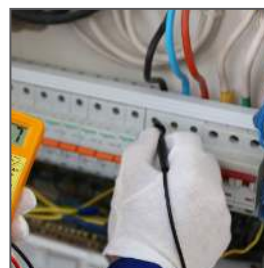
### Defense

Security

Surveillance



MRI



Industrial Test Equipment



Aircraft Cabin

# High-Density D-Sub Connectors With Machined Contacts



## Specifications

### REFERENCE INFORMATION

Packaging: Carton  
 Mates With:  
 IEC 60807-3 / DIN 41652  
 MIL-DTL-24308  
 Terminal Used: 1731130XXX crimp only  
 RoHS: Yes, by exemption  
 Halogen Free: No  
 Glow Wire Compliant: No

### ELECTRICAL

Voltage (max.): 1000V/1 minute  
 Current (max.): 5.0A  
 Contact Resistance:  $\leq 15$  milliohms  
 Dielectric Withstanding Voltage: 1000VDC  
 Insulation Resistance:  $\geq 3000$  M $\Omega$

### MECHANICAL

Mating Force per Signal Contact:  $\leq 3.4$ N  
 Unmating Force per Signal Contact:  $\geq 0.2$  N  
 Torque (max.): 40 Ncm

### PHYSICAL

Insulator: Polyester, glass fiber filled, black  
 Shell: Steel  
 Shell Plating:  
 Tin over nickel, pin connector shell with dimples  
 Contact: Copper Alloy  
 Operating Temperature:  
 Standard -55°C (-67°F) to +130°C (266°F)  
 Waterproof-25°C (-13°F) to +70°C (158°F)

## Ordering Information

Series No.	Engineering No.	Component	Orientation	No. of Contacts
<a href="#">1731130141</a>	F09-15P1G0-5337	Plug	Straight PCB	15
<a href="#">1731130142</a>	F15-26P1G0-5337	Plug	Straight PCB	26
<a href="#">1731130143</a>	F25-44P1G0-5337	Plug	Straight PCB	44
<a href="#">1731130144</a>	F09-15S1G0-5337	Socket	Straight PCB	15
<a href="#">1731130145</a>	F15-26S1G0-5337	Socket	Straight PCB	26
<a href="#">1731130146</a>	F25-44S1G0-5337	Socket	Straight PCB	44
<a href="#">1731130147</a>	F09-15P0G0-0008	Plug	Solder Pot	15
<a href="#">1731130148</a>	F15-26P0G0-0008	Plug	Solder Pot	26
<a href="#">1731130149</a>	F25-44P0G0-0008	Plug	Solder Pot	44
<a href="#">1731130150</a>	F09-15S0G0-0008	Socket	Solder Pot	15
<a href="#">1731130151</a>	F15-26S0G0-0008	Socket	Solder Pot	26
<a href="#">1731130152</a>	F25-44S0G0-0008	Socket	Solder Pot	44
<a href="#">1731130153</a>	F09-15P135G0-5979	Plug	Right Angle With Metal Bracket	15
<a href="#">1731130154</a>	F15-26P135G0-5979	Plug	Right Angle With Metal Bracket	26
<a href="#">1731130155</a>	F25-44P135G0-5979	Plug	Right Angle With Metal Bracket	44
<a href="#">1731130156</a>	F09-15S135G0-5979	Socket	Right Angle With Metal Bracket	15
<a href="#">1731130157</a>	F15-26S135G0-5979	Socket	Right Angle With Metal Bracket	26
<a href="#">1731130158</a>	F25-44S135G0-5979	Socket	Right Angle With Metal Bracket	44

# High-Density D-Sub Connectors With Machined Contacts



## Ordering Information

Part No.	Engineering No.	Component	Orientation	No. of Contacts
<a href="#">1731090035</a>	FL09-15P7	Plug	Crimp	15
<a href="#">1731130099</a>	FL15-26P7	Plug	Crimp	26
<a href="#">1731130101</a>	FL25-44P7	Plug	Crimp	44
<a href="#">1731130103</a>	FL37-62P7	Plug	Crimp	62
<a href="#">1731090036</a>	FL09-15S7	Socket	Crimp	15
<a href="#">1731130100</a>	FL15-26S7	Socket	Crimp	26
<a href="#">1731130102</a>	FL25-44S7	Socket	Crimp	44
<a href="#">1731130104</a>	FL37-62S7	Socket	Crimp	62
			Plating	
<a href="#">1731120223</a>	FK22P-02V-5783	Pin	0.2µm Au (over Ni)	
<a href="#">1731120224</a>	FK22P-08V-5783	Pin	0.8µm Au (over Ni)	
<a href="#">1731120225</a>	FK22P-13V-5783	Pin	1.3µm Au (over Ni)	
<a href="#">1731120226</a>	FK22SL-02V-5783	Socket	0.2µm Au (over Ni)	
<a href="#">1731120227</a>	FK22SL-08V-5783	Socket	0.8µm Au (over Ni)	
<a href="#">1731120228</a>	FK22SL-13V-5783	Socket	1.3µm Au (over Ni)	

[www.fctgroup.com](http://www.fctgroup.com)

Molex is a registered trademark of Molex, LLC in the United States of America and may be registered in other countries; all other trademarks listed herein belong to their respective owners.