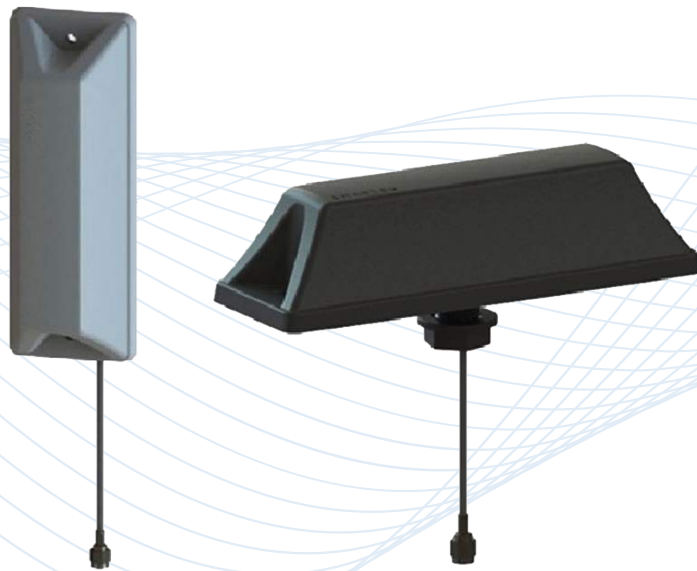


LP70x-Series Low-Profile Multiband Antenna

Cellular Antennas (5G, LTE, CBRS, 3G, 2G) - Low
Profile Whipless

710379, 710406, 710407



Description

Low-profile, multiband whipless antenna that delivers reliable LTE connectivity.

Technologies

- 2G / 3G / 4G LTE

Features

- Low profile, ergonomic style with sophisticated engineering
- Easy installations
- Combined 2G/3G/4G/LTE functionalities in one single housing
- Ground plane independent



LP70x-Series Low-Profile Multiband Antenna

Cellular Antennas (5G, LTE, CBRS, 3G, 2G) - Low Profile Whipless

The LP70x-Series by Smarteq, a PCTEL company, is a low-profile multiband antenna that operates simultaneously in the 698-960 MHz and 1710-2700 MHz bands with omnidirectional performance. It is designed to be a surface mount that performs well on metallic or non-metallic surfaces. The low-profile housing gives a high degree of vandal resistance, making it perfect for M2M and IoT applications where reliable communications are required.

Features

- Radio system: 2G/3G/4G
- Frequency: 698-960/1710-2690MHz
- Gain: 1.5 / 2.5dBi
- Color: Black or Gray
- Can be mounted on metal and non conductive surfaces
- LP701: Screw mounted / IP65
- LP702: Hole mounted / IP65, when installed
- DC shorted
- IATF 16949

Applications

- Smart Metering
- Smart City
- EV-chargers
- Vending machines
- Parking meters

Certifications



LP70x-Series Low-Profile Multiband Antenna

Cellular Antennas (5G, LTE, CBRS, 3G, 2G) - Low Profile Whipless

Standard Configurations

Model	Cable	Cable Length	Connector	Housing Color
710379 (LP701)	RG316	1.5m	SMA-male	Grey
710406 (LP701)	RG316	1.5m	SMA-female	Grey
710407 (LP702)	RG316	1.5m	SMA-male	Black

Electrical Specifications – RF Antennas (All Models)

Frequency Ranges	VSWR		Max. 3D Gain		Efficiency		Nominal Impedance	Polarization	Radiation Pattern	Max Power*	DC Short
	In Free Space	On Metal Plane	In Free Space	On Metal Plane	In Free Space	On Metal Plane					
698 - 760 MHz	< 2.5:1	< 2.5:1	1.5 dBi	2.5 dBi	75%	65%	50Ω	Linear	Omni-directional	20 watts	Yes
790 - 960 MHz	< 2.2:1	< 2.2:1	2.2 dBi	5 dBi	80%	80%					
1710 - 2690 MHz	< 2.0:1	< 2.0:1	4.8 dBi	6 dBi	75%	70%					

Mechanical and Environmental Specifications (All Models)

Physical

Dimensions (L x W x H)	168 x 56 x 42 mm	
Weight	~135g	
Color	Grey, black	
Installation	LP701	2 screws/adhesive
	LP702	Center screw/adhesive. Material thickness ≤ 3.5mm, installation hole Ø 16-19mm
Operating / Storage Temperature	-40°C to +85°C	
UL Certified	Tested according to EN45545:2013	
IP Class	IP65	

* Antenna measurement performed with 0.5 meter RG316 cable.

CONTACT US

**For more information about
this product contact your
sales representative or visit
> pctel.com/antenna-products**

Solving Complex Wireless Challenges

PCTEL is a leading global provider of wireless technology solutions, including purpose-built Industrial IoT devices, antenna systems, and test and measurement products. Trusted by our customers for over 25 years, we solve complex wireless challenges to help organizations stay connected, transform, and grow.



PCTEL, Inc.

T: +1 630 372 6800 | pctel.com

Specifications subject to change without notice. PCTEL® is a registered trademark of PCTEL, Inc. ©2023 PCTEL, Inc. All rights reserved. (January 2023)