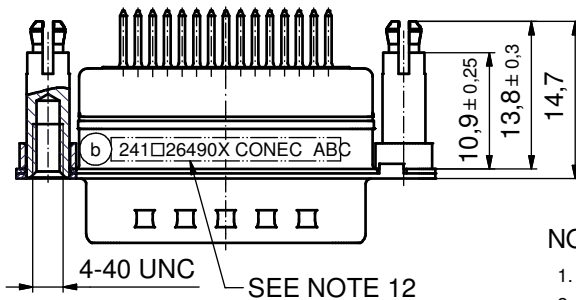
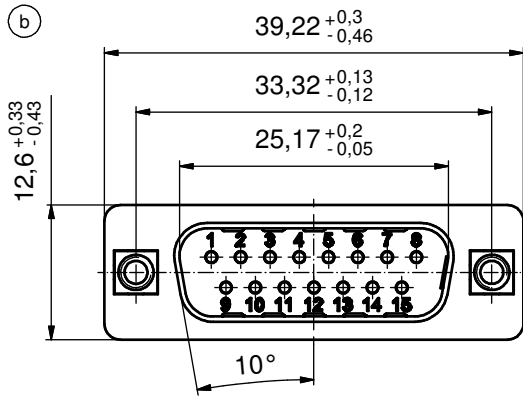
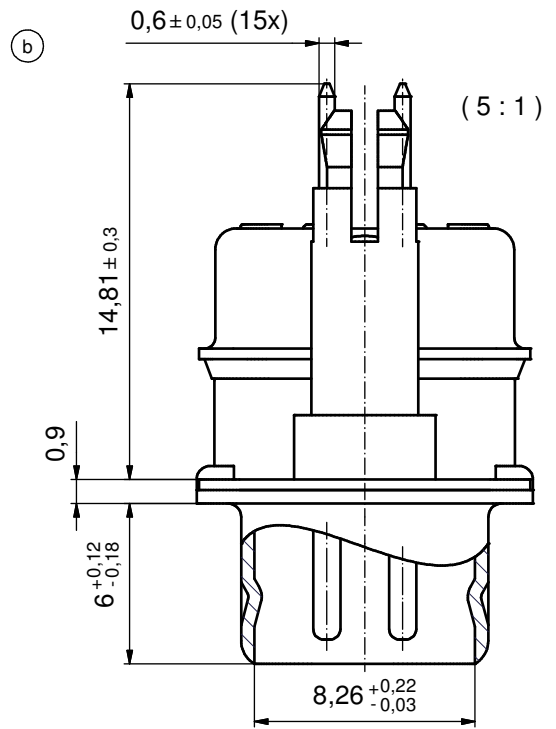
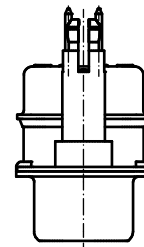


P.C.B. HOLE DRILLINGS
(P.C.B. TOP SIDE)

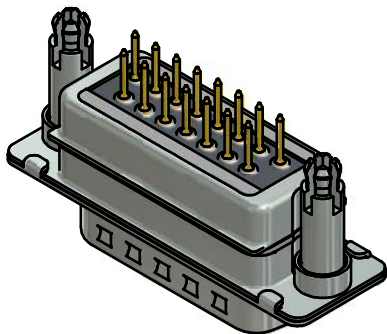


SEE NOTE 12



NOTES: (b)

1. RoHS COMPLIANT
2. FOR WAVESOLDERING (SOLDER BATH TEMPERATURE 260°C FOR 5 SEC. AND SOLDER PREHEAT 100°C FOR 30 SEC.)
3. METALSHELLS: STEEL; min. 315µin TIN over 40-80µin NICKEL
4. INSULATOR: HIGH TEMPERATURE PLASTIC UL 94 V-0; BLACK
5. CONTACTS: COPPER ALLOY; PLATING (SEE PART NO.):
 PLEASE ADD A for GOLD FLASH over NICKEL (PREFERRED TYPE)
 PLEASE ADD B for 20µin HARD GOLD over min. 50µin NICKEL
 PLEASE ADD C for 30µin HARD GOLD over min. 50µin NICKEL
 CONTACTS TAILS PRETINNED
6. THREADED SPACER CLIPS: COPPER ALLOY; min. 200µin TIN over 80µin NICKEL
 PCB-HOLE: $\phi 3,1 \pm 0,1$; PCB THICKNESS 1,6mm
7. COLLARS: COPPER ALLOY; min. 200µin TIN over 80µin NICKEL
8. CAPACITANCE: $2 \times 1300\text{pF} \pm 20\%$
9. DIELECTRIC WITHSTANDING VOLTAGE: 300 VDC
10. P.C.B. HOLE DRILLINGS SEE SHEET 2
11. MAXIMUM TORQUE VALUE FOR THREAD: 6 in.LB
12. CONNECTOR IS PART MARKED: **241□26490X CONEC ABC**



Directive 2002/95/EC RoHS compliant

| | | | | | | |
|---|-------------|------------|----------------|--------------------------------------|--|--|
| THIS DRAWING MAY NOT BE COPIED OR REPRODUCED IN ANY WAY, AND MAY NOT BE PASSED ON TO A THIRD PARTY WITHOUT WRITTEN PERMISSION. OWNERSHIP AND COPYRIGHT OF CONEC GmbH DO NOT ALTER CAD DRAWING BY HAND | tolerance | | dim. in mm | scale: 2:1 (5:1) | | |
| | | | | material: SEE NOTES | | |
| | | | date | name | | title: D-SUB PI FILTER MALE 15pos. SOLDER PIN STRAIGHT with threaded spacer clip |
| | | | drawn 06.05.13 | Henneboel | | |
| | | | appd. 06.05.13 | Fischer | | |
| | | | norm | | | dwg no: (b) 24K1A1440 |
| | | d-old | 24K1A930 | | | |
| 6 x b | A4743 | 06.05.2013 | K.H. | | | DIN-A3 |
| a | Original | | | | | sh: 1 |
| rev. | description | date | name | part no: (b) 241□26490X (see note 5) | | |